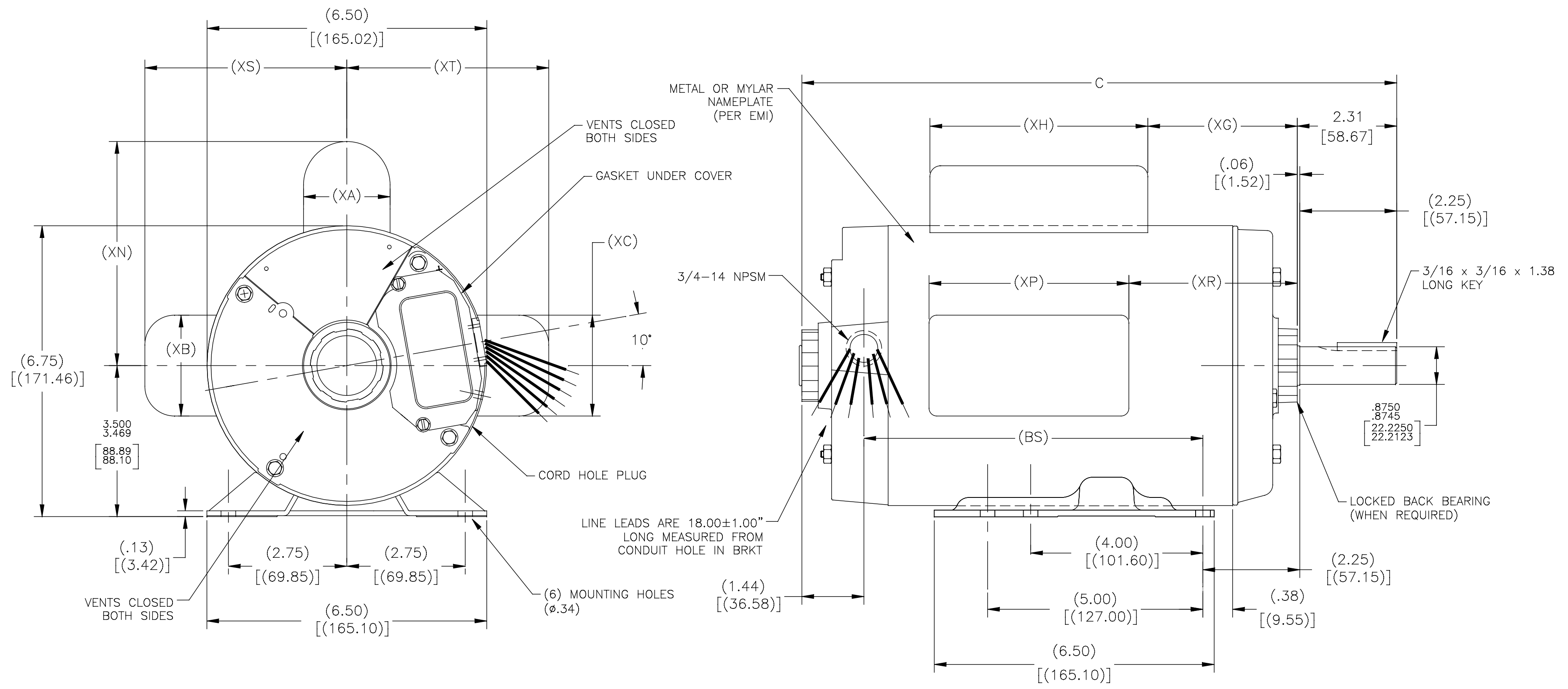


TYPE	FRAME	FORM	C	XH	XG	XA	XP	XR	XN	XS	XT	BS	XC	XB
CP	P145T	K	13.81	5.06	3.47	2.27	4.64	4.18	5.19	4.69	4.69	10.12	2.34	2.34

ALL DIMENSIONS SHOWN IN PARENTHESIS ARE REFERENCE DIMENSIONS. ALL OTHER DIMENSIONS ARE TOLERANCED PER THE FOLLOWING CHART UNLESS OTHERWISE SPECIFIED.

"C" DIM.	= +/- .055
SHAFT EXT.	= +/- .034
LEAD LENGTHS	= +/- 1.00
EXTENDED THRU-BOLTS	= +/- .050
ANGULAR DIMS	= +/- 2 DEGS

NOTE:
ROTATE BOTH BRKTS 10°
CCW FACING LEAD END



DRAWING REVISION B	REVISION BY M.RODARTE	DATE 11-04-2015	TOLERANCES UNLESS OTHERWISE SPECIFIED	DRAWN BY: A.BAUGHMAN	Regal Beloit America, Inc.
ECO 0088261	APPROVED BY M.RODARTE	DATE 11-04-2015	DEC. INCH mm ANGLE .X ±0.1 [±2.5] ±0.5° .XX ±0.02 [±0.51] .XXX ±0.005 [±0.127] .XXXX ±0.0005 [±0.0127]	DATE: 02-11-2015	
ECO DESCRIPTION SEE ECO			REMOVE BURRS & BREAK SHARP EDGES .003/.015 [0.076/.381] CORNER FILLETS .02 [51] MACHINED SURFACES 125/INCH 3.2/mm	APPROVED BY: A.BAUGHMAN	DESCRIPTION MODEL-IHP OUTLINE
<small>COPYRIGHT REGAL BELOIT AMERICA, INC. ALL RIGHTS RESERVED. PROPRIETARY AND CONFIDENTIAL INFORMATION - THIS DOCUMENT IS THE PROPERTY OF REGAL BELOIT AMERICA, INC. (OWNERS) AND CONTAINS OWNERS PROPRIETARY INFORMATION. ANY PERSON, CORPORATION OR OTHER FIRM RECEIVING IT IS DEEMED, BY RECEIVING IT, TO AGREE THAT IT, AND/OR ANY PART OF IT, SHALL NOT BE DISCLOSED TO ANY PERSON, CORPORATION OR OTHER ENTITY, DUPLICATED, AND/OR USED, EXCEPT AS EXPRESSLY APPROVED IN WRITING IN ADVANCE BY OWNER. THIS DOCUMENT SHALL BE RETURNED TO OWNER UPON REQUEST. IT MAY BE SUBJECT TO CERTAIN RESTRICTIONS UNDER APPLICABLE EXPORT CONTROL LAWS AND REGULATIONS.</small>			THIRD ANGLE PROJECTION	DATE: 02-11-2015	MATERIAL
			SIZE DWG NO C K112V1	REFERENCE	PROCESS/FINISH
					SHEET 1