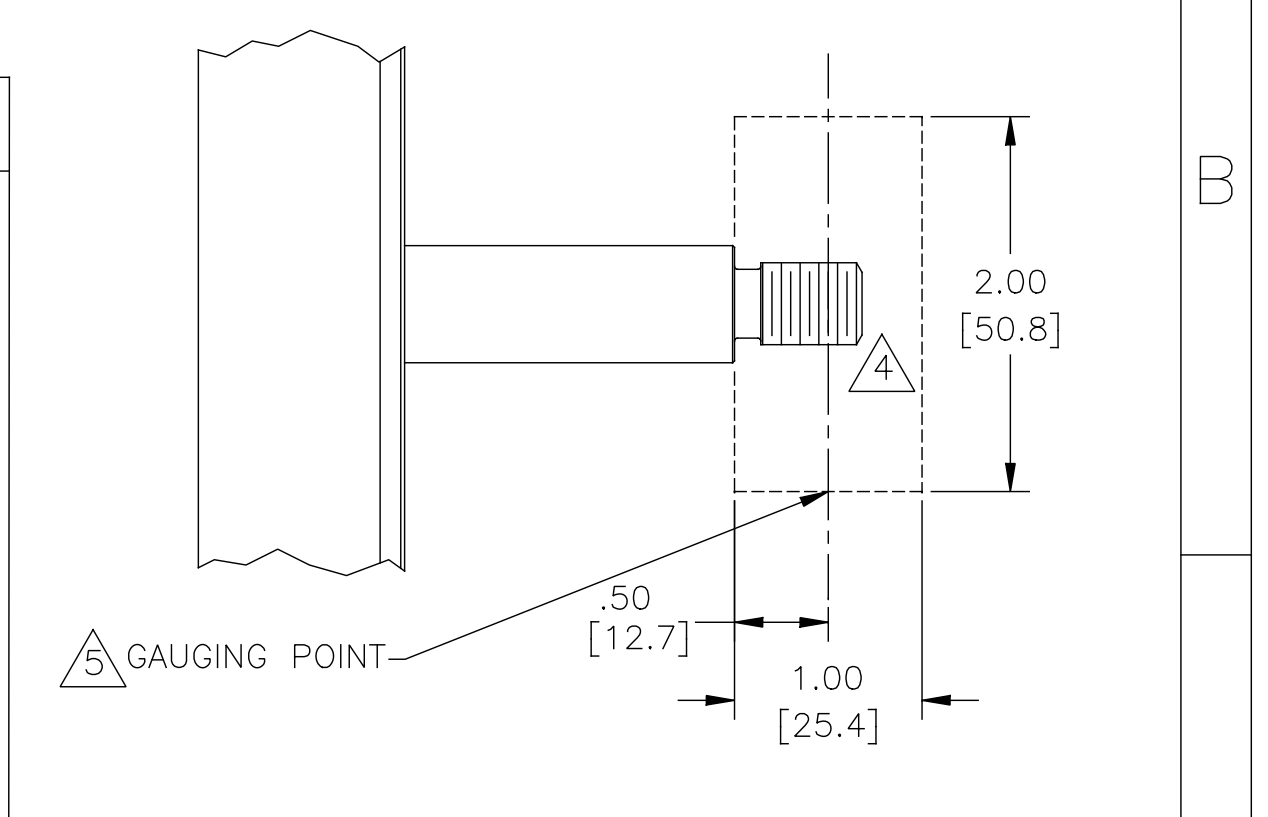


NAMEPLATE DATA		EXTERNAL CONNECTION DIAGRAM	NOTES
MODEL: H969ES CUST PN: P56AJ15A01 HP: 2.0 SF: 1.15 ROT: RCW RPM: 3450 TYPE: SC FORM: CODE: K FRAME: F56J VOLTS: 575 AMPS: 2.1 MAX AMPS: - SF AMPS: 2.3 PH: 3 HZ: 60 INS: B AMB: 40°C DUTY: CONT ENCLOSURE: TE		183040-35 #1 RED ——— LINE A #2 WHITE ——— LINE B #3 BLUE ——— LINE C TO REVERSE, INTERCHANGE ANY TWO LINE LEADS.	⚠️ PILOT DIAMETER IS CONCENTRIC WITH SHAFT CENTERLINE WITHIN .004 T.I.R. ⚠️ FACE OF MOUNTING FLANGE IS PERPENDICULAR TO SHAFT CENTERLINE WITHIN .004 T.I.R. 3. SHAFT RUNOUT NOT TO EXCEED .002 T.I.R. 4. FOR THREADED SHAFT EXT. MATING PARTS SHOULD BE RELIEVED ONE THREAD TO CLEAR FILLET. 5. FOR THREADER SHAFT EXT. ECCENTRICITY OF THREADED PORTION OF SHAFT IS HELD WITHIN .004 TOTAL GAGE READING WITH THE INDICATOR ON O.D. OF GROUND RING AS SHOWN. THE GAGE BEING STATIONARY WITH RESPECT TO THE ROTOR. 6. END PLAY NOT TO EXCEED .010 MEASURED WITH NO THRUST 7. ALL DIMENSIONS SHOWN IN PARENTHESIS ARE REFERENCE DIMENSIONS.



PERFORMANCE CURVE		APPROVED SAMPLE	
SS0010536-4		CSA	
FILE#	CCN#	FILE#	GUIDE#
E44549	PRGY2	LR4642	4211-01
CUSTOMER	DISTRIBUTION		

DRAWING REVISION	REVISION BY	DATE	TOLERANCES UNLESS OTHERWISE SPECIFIED
A	APPROVED BY	DATE	DEC. INCH mm ANGLE
0100237			.X ±0.1 [±2.5] ±0.5°
ECO DESCRIPTION			.XX ±0.02 [±0.51]
NEW			.XXX ±0.005 [±0.127]
			.XXXX ±0.0005 [±0.0127]
			REMOVE BURRS & BREAK SHARP EDGES .003/.015 [0.076/.381]
			CORNER FILLETS .02 [0.51]
			MACHINED SURFACES 125/3.2
			mm SHOWN IN [BRACKETS]

DRAWN BY:		REGAL™ Regal Beloit America, Inc.	
L. ALMARAZ		DESCRIPTION	
DATE: 04/13/2016		MODEL-CFHP-56FR	
APPROVED BY: M. RODARTE		OUTLINE	
DATE: 04/13/2016		MATERIAL	
REFERENCE		PROCESS/FINISH	
THIRD ANGLE PROJECTION		SIZE DWG NO	SHEET
		C H969ES	1