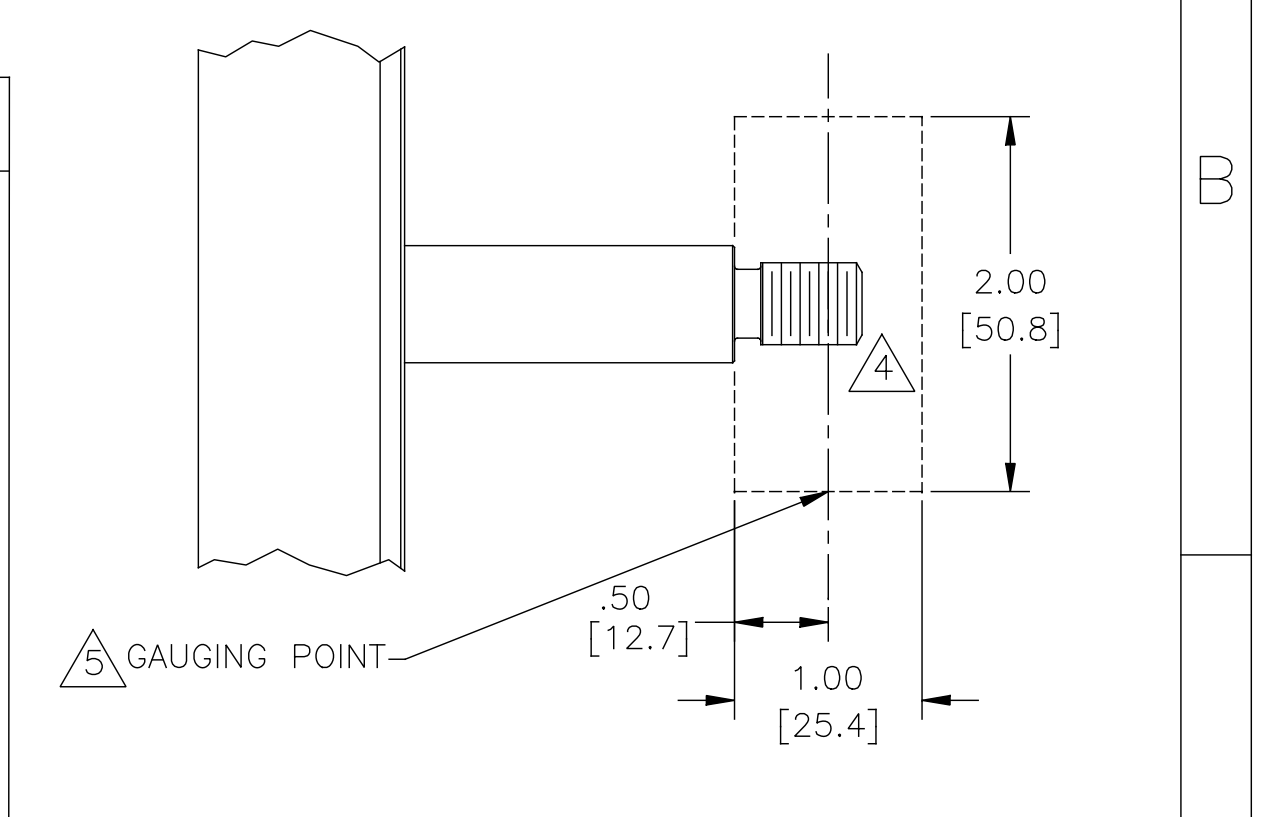


NAMEPLATE DATA		EXTERNAL CONNECTION DIAGRAM	NOTES
MODEL: P56AJ17A01 CUST PN: H968ES HP: 1.5 SF: 1.0 ROT: RCW RPM: 3450 TYPE: SC FORM: CODE: M FRAME: K56J VOLTS: 575 AMPS: 1.60 MAX AMPS: - SF AMPS: - PH: 3 HZ: 60 INS: B AMB: 40°C DUTY: CONT ENCLOSURE: TEFC		183040-35 #1 RED ——— LINE A #2 WHITE ——— LINE B #3 BLUE ——— LINE C TO REVERSE, INTERCHANGE ANY TWO LINE LEADS.	1. PILOT DIAMETER IS CONCENTRIC WITH SHAFT CENTERLINE WITHIN .004 T.I.R. 2. FACE OF MOUNTING FLANGE IS PERPENDICULAR TO SHAFT CENTERLINE WITHIN .004 T.I.R. 3. SHAFT RUNOUT NOT TO EXCEED .002 T.I.R. 4. FOR THREADED SHAFT EXT. MATING PARTS SHOULD BE RELIEVED ONE THREAD TO CLEAR FILLET. 5. FOR THREADER SHAFT EXT. ECCENTRICITY OF THREADED PORTION OF SHAFT IS HELD WITHIN .004 TOTAL GAGE READING WITH THE INDICATOR ON O.D. OF GROUND RING AS SHOWN. THE GAGE BEING STATIONARY WITH RESPECT TO THE ROTOR. 6. END PLAY NOT TO EXCEED .010 MEASURED WITH NO THRUST 7. ALL DIMENSIONS SHOWN IN PARENTHESIS ARE REFERENCE DIMENSIONS.



PERFORMANCE CURVE		APPROVED SAMPLE	
SS0098312-4		CSA	
FILE#	CCN#	FILE#	GUIDE#
E44549	PRGY2	LR4642	4211-01
CUSTOMER	REGAL DISTRIBUTION		

DRAWING REVISION	REVISION BY	DATE
A		
ECO	APPROVED BY	DATE
0100523		
ECO DESCRIPTION		
NEW		

TOLERANCES UNLESS OTHERWISE SPECIFIED			
DEC.	INCH	mm	ANGLE
.X	±0.1	[±2.5]	±0.5°
.XX	±0.02	[±0.51]	
.XXX	±0.005	[±0.127]	
.XXXX	±0.0005	[±0.0127]	
REMOVE BURRS & BREAK SHARP EDGES .003/.015 [0.076/.381]			
CORNER FILLETS .02 [0.51]			
MACHINED SURFACES 125/3.2			
mm SHOWN IN [BRACKETS]			

DRAWN BY:		REGAL™ Regal Beloit America, Inc.	
L. ALMARAZ		DESCRIPTION	
DATE: 04/16/2016		MODEL-CFHP-56FR	
APPROVED BY: M. RODARTE		OUTLINE	
DATE: 04/16/2016		MATERIAL	
REFERENCE		PROCESS/FINISH	
THIRD ANGLE PROJECTION		SIZE DWG NO	
C		H968ES	
		SHEET 1	