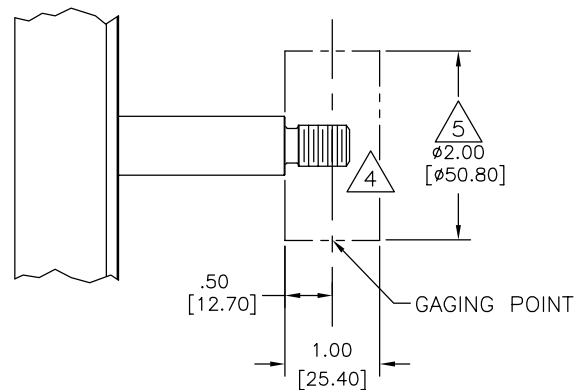
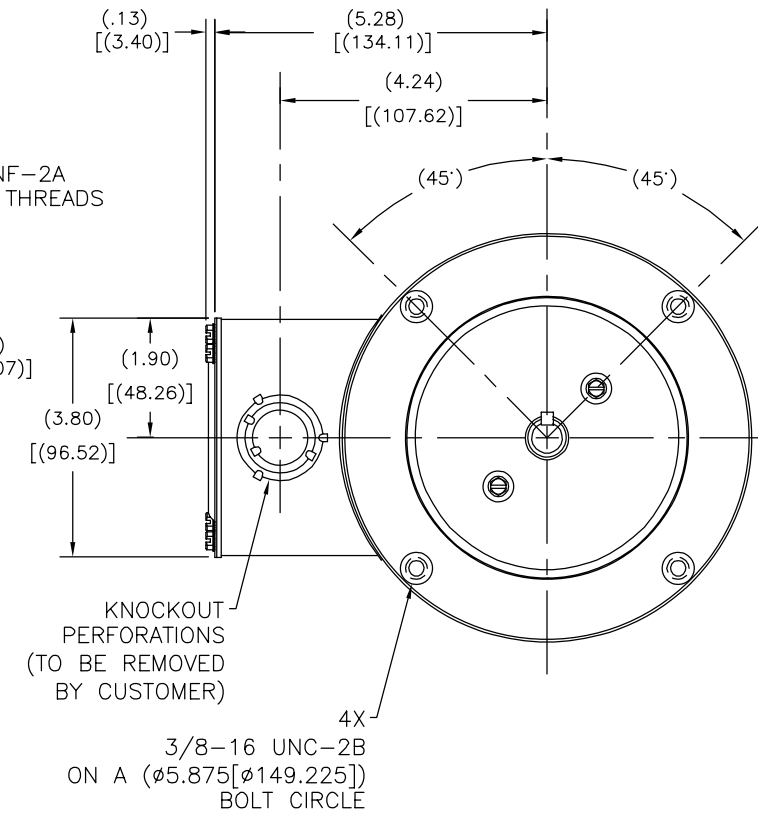
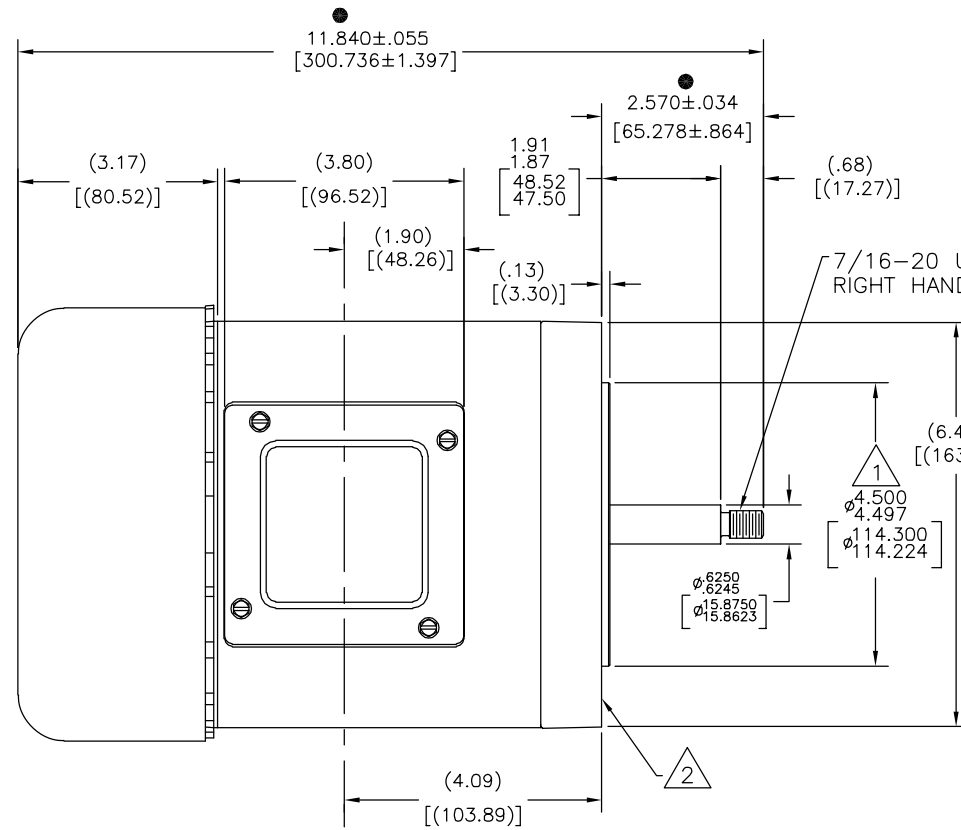
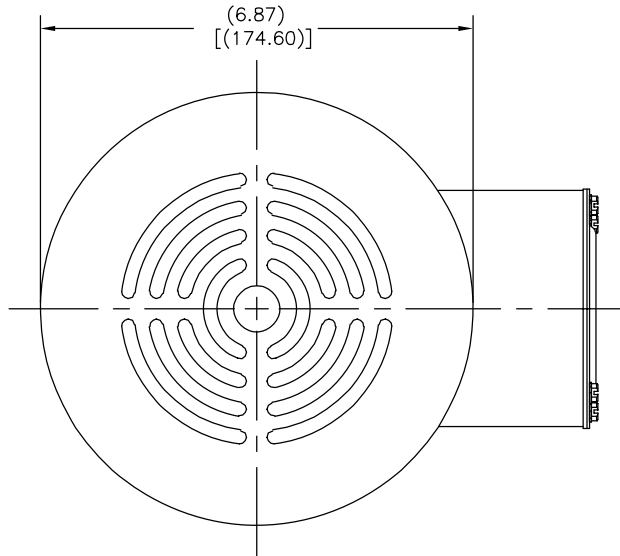


TYPE	FRAME
SC	J56J

NOTES:

- 1. PILOT DIAMETER IS CONCENTRIC WITH SHAFT CENTERLINE WITHIN .004[.102] T.I.R.
- 2. FACE OF MOUNTING FLANGE IS PERPENDICULAR TO SHAFT CENTERLINE WITHIN .004[.102] T.I.R.
- 3. SHAFT RUNOUT NOT TO EXCEED .002[.051] T.I.R.
- 4. FOR THREADED SHAFT EXT. (56J) MATING PARTS SHOULD BE RELIEVED ONE THREAD TO CLEAR FILLET.
- 5. FOR THREADED SHAFT EXT. (56J) ECCENTRICITY OF THREADED PORTION OF SHAFT IS HELD WITHIN .004[.102] TOTAL GAGE READING WITH THE INDICATOR ON O.D. OF GROUND RING GAGE AS SHOWN. THE GAGE BEING STATIONARY WITH RESPECT TO THE ROTOR.
- 6. END PLAY NOT TO EXCEED .010[.254] MEASURED WITH NO THRUST.
- 7. ALL DIMENSIONS SHOWN IN PARENTHESIS ARE REFERENCE DIMENSIONS.



● = CRITICAL DIMENSION

DRAWING REVISION A	REVISION BY J.C. ESTRADA	DATE 3-31-2014	TOLERANCES UNLESS OTHERWISE SPECIFIED DEC. INCH mm ANGLE .X ±0.1 [±2.5] ±0.5° .XX ±0.02 [±0.51] .XXX ±0.005 [±0.127] .XXXX ±0.0005 [±0.0127]	DRAWN BY: DAVHOL	Regal Beloit America, Inc.
ECO 0048571	APPROVED BY F. PAYAN	DATE 3-31-2014	REMOVE BURRS & BREAK SHARP EDGES .003[.015] [0.076[.381]] CORNER/FILLETS .02 [1.51] MACHINED SURFACES 1/25 INCH 3.2 mm SHOWN IN [BRACKETS]	DATE: 10-13-1999	
ECO DESCRIPTION SEE MODEL NUMBER				APPROVED BY:	MATERIAL
<small>COPYRIGHT REGAL BELOIT AMERICA, INC. ALL RIGHTS RESERVED. PROPRIETARY AND CONFIDENTIAL INFORMATION - THIS DOCUMENT IS THE PROPERTY OF REGAL BELOIT AMERICA, INC. (OWNER) AND CONTAINS OWNER'S PROPRIETARY INFORMATION. ANY PERSON, CORPORATION OR OTHER FIRM RECEIVING IT IS DEEMED, BY RECEIVING IT, TO AGREE THAT IT, AND/OR ANY PART OF IT, SHALL NOT BE DISCLOSED TO ANY PERSON, CORPORATION OR OTHER ENTITY, DUPLICATED, AND/OR USED, EXCEPT AS EXPRESSLY APPROVED IN WRITING IN ADVANCE BY OWNER. THIS DOCUMENT SHALL BE RETURNED TO OWNER UPON REQUEST. IT MAY BE SUBJECT TO CERTAIN RESTRICTIONS UNDER APPLICABLE EXPORT CONTROL LAWS AND REGULATIONS.</small>				DATE:	SIZE DWG NO H966
				PROCESS/FINISH	SHEET 1
				THIRD ANGLE PROJECTION	