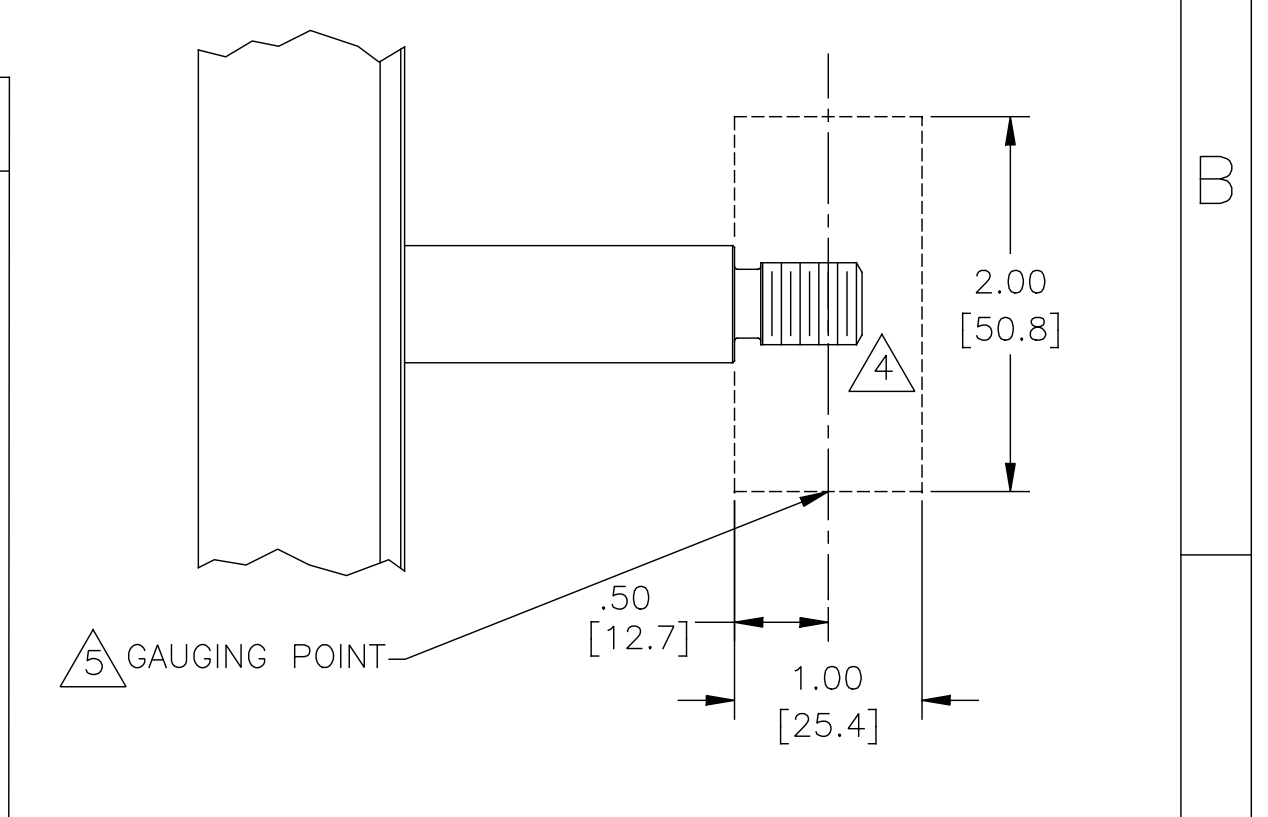


NAMEPLATE DATA	EXTERNAL CONNECTION DIAGRAM	NOTES																														
MODEL: P56AJ12A01 CUST PN: H707ES HP: 3.0 SF: 1.00 ROT: RCW RPM: 3450 TYPE: SC FORM: VOLTS: 230/460 AMPS: 8.0/4.0 MAX AMPS: - SF AMPS: - PH: 3 INS: B DUTY: CONT ENCLOSURE: TE	<p>183040-24</p> <table border="0"> <tr> <td>LOW VOLTAGE</td> <td>TO REVERSE, INTER-CHANGE ANY TWO LINE LEADS.</td> <td>HIGH VOLTAGE</td> </tr> <tr> <td>4-BROWN</td> <td></td> <td>4-BROWN</td> </tr> <tr> <td>5-ORANGE</td> <td></td> <td>7-PURPLE</td> </tr> <tr> <td>6-BLACK</td> <td></td> <td>5-ORANGE</td> </tr> <tr> <td>1-RED</td> <td></td> <td>8-GRAY</td> </tr> <tr> <td>7-PURPLE</td> <td>LINE 1</td> <td>6-BLACK</td> </tr> <tr> <td>2-WHITE</td> <td>LINE 2</td> <td>9-PINK</td> </tr> <tr> <td>8-GRAY</td> <td>LINE 2</td> <td>1-RED</td> </tr> <tr> <td>3-BLUE</td> <td>LINE 3</td> <td>2-WHITE</td> </tr> <tr> <td>9-PINK</td> <td>LINE 3</td> <td>3-BLUE</td> </tr> </table>	LOW VOLTAGE	TO REVERSE, INTER-CHANGE ANY TWO LINE LEADS.	HIGH VOLTAGE	4-BROWN		4-BROWN	5-ORANGE		7-PURPLE	6-BLACK		5-ORANGE	1-RED		8-GRAY	7-PURPLE	LINE 1	6-BLACK	2-WHITE	LINE 2	9-PINK	8-GRAY	LINE 2	1-RED	3-BLUE	LINE 3	2-WHITE	9-PINK	LINE 3	3-BLUE	<p>△ PILOT DIAMETER IS CONCENTRIC WITH SHAFT CENTERLINE WITHIN .004 T.I.R.</p> <p>△ FACE OF MOUNTING FLANGE IS PERPENDICULAR TO SHAFT CENTERLINE WITHIN .004 T.I.R.</p> <p>3. SHAFT RUNOUT NOT TO EXCEED .002 T.I.R.</p> <p>4. FOR THREADED SHAFT EXT. MATING PARTS SHOULD BE RELIEVED ONE THREAD TO CLEAR FILLET.</p> <p>△ 5. FOR THREADER SHAFT EXT. ECCENTRICITY OF THREADED PORTION OF SHAFT IS HELD WITHIN .004 TOTAL GAGE READING WITH THE INDICATOR ON O.D. OF GROUND RING AS SHOWN. THE GAGE BEING STATIONARY WITH RESPECT TO THE ROTOR.</p> <p>6. END PLAY NOT TO EXCEED .010 MEASURED WITH NO THRUST</p> <p>7. ALL DIMENSIONS SHOWN IN PARENTHESIS ARE REFERENCE DIMENSIONS.</p>
LOW VOLTAGE	TO REVERSE, INTER-CHANGE ANY TWO LINE LEADS.	HIGH VOLTAGE																														
4-BROWN		4-BROWN																														
5-ORANGE		7-PURPLE																														
6-BLACK		5-ORANGE																														
1-RED		8-GRAY																														
7-PURPLE	LINE 1	6-BLACK																														
2-WHITE	LINE 2	9-PINK																														
8-GRAY	LINE 2	1-RED																														
3-BLUE	LINE 3	2-WHITE																														
9-PINK	LINE 3	3-BLUE																														



PERFORMANCE CURVE		APPROVED SAMPLE	
SS0100049			
UL COMPONENT		CSA	
FILE#	CCN#	FILE#	GUIDE#
E44549	PRGY2	LR4642	4211-01
CUSTOMER	DISTRIBUTION		

DRAWING REVISION	REVISION BY	DATE	TOLERANCES UNLESS OTHERWISE SPECIFIED	DRAWN BY:	Regal Beloit America, Inc.
A	APPROVED BY	DATE	DEC. INCH mm ANGLE	MEO	
ECO-0100151			.X ±0.1 [±2.5] ±0.5°	DATE:	DESCRIPTION MODEL-CFHP-56FR OUTLINE
ECO DESCRIPTION			.XX ±0.02 [±0.51]	APPROVED BY:	
NEW			.XXX ±0.005 [±0.127]	J. REYNOLDS	MATERIAL
<small>COPYRIGHT REGAL BELOIT AMERICA, INC. ALL RIGHTS RESERVED. PROPRIETARY AND CONFIDENTIAL INFORMATION - THIS DOCUMENT IS THE PROPERTY OF REGAL BELOIT AMERICA, INC. (OWNER) AND CONTAINS OWNER'S PROPRIETARY INFORMATION. ANY PERSON, CORPORATION OR OTHER FIRM RECEIVING IT IS DEEMED, BY RECEIVING IT, TO AGREE THAT IT, AND/OR ANY PART OF IT, SHALL NOT BE DISCLOSED TO ANY PERSON, CORPORATION OR OTHER ENTITY, DUPLICATED, AND/OR USED, EXCEPT AS EXPRESSLY APPROVED IN WRITING IN ADVANCE BY OWNER. THIS DOCUMENT SHALL BE RETURNED TO OWNER UPON REQUEST. IT MAY BE SUBJECT TO CERTAIN RESTRICTIONS UNDER APPLICABLE EXPORT CONTROL LAWS AND REGULATIONS.</small>			.XXXX ±0.0005 [±0.0127]	DATE:	PROCESS/FINISH
			REMOVE BURRS & BREAK SHARP EDGES .003/.015 [0.076/.381]	04/13/16	
			CORNER FILLETS .02 [.51]	REFERENCE	SIZE DWG NO
			MACHINED SURFACES $\sqrt{125}$ mm $\sqrt{3.2}$ INCH	THIRD ANGLE PROJECTION	C
			mm SHOWN IN [BRACKETS]		H707ES
					SHEET 1