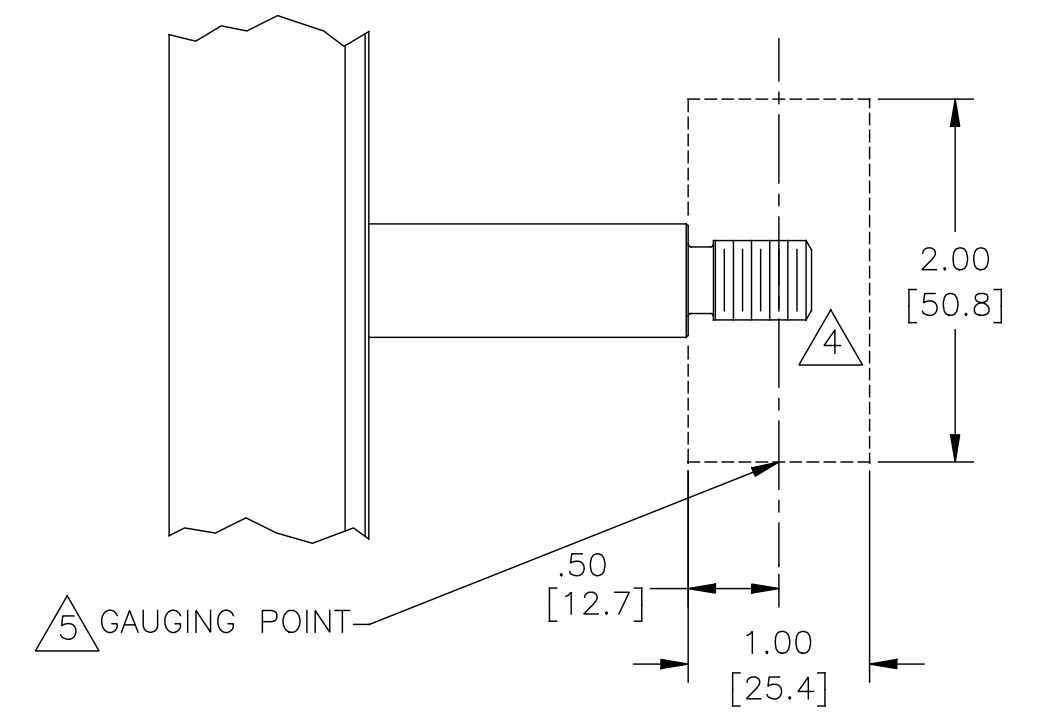


KNOCKOUT PERFORATIONS
(TO BE REMOVED BY
CUSTOMER)

3/8-16 UNC-2B ON A
($\phi 5.875$) [$\phi 149.23$] B.C.
TYP. 4 PLACES



NAMEPLATE DATA		EXTERNAL CONNECTION DIAGRAM	NOTES
MODEL: H516ES CUST PN: P56AH80A01 HP: 1.0 SF: 1.15 ROT: RCW RPM: 3450 TYPE: SC FORM: CODE: M FRAME: J56J VOLTS: 230/460 AMPS: 3.0/1.5 MAX AMPS: - SF AMPS: 3.4/1.7 PH: 3 HZ: 60 INS: B AMB: 40°C DUTY: CONT ENCLOSURE: TEFC			<ol style="list-style-type: none"> 1. PILOT DIAMETER IS CONCENTRIC WITH SHAFT CENTERLINE WITHIN .004 T.I.R. 2. FACE OF MOUNTING FLANGE IS PERPENDICULAR TO SHAFT CENTERLINE WITHIN .004 T.I.R. 3. SHAFT RUNOUT NOT TO EXCEED .002 T.I.R. 4. FOR THREADED SHAFT EXT. MATING PARTS SHOULD BE RELIEVED ONE THREAD TO CLEAR FILLET. 5. FOR THREADER SHAFT EXT. ECCENTRICITY OF THREADED PORTION OF SHAFT IS HELD WITHIN .004 TOTAL GAGE READING WITH THE INDICATOR ON O.D. OF GROUND RING AS SHOWN. THE GAGE BEING STATIONARY WITH RESPECT TO THE ROTOR. 6. END PLAY NOT TO EXCEED .010 MEASURED WITH NO THRUST 7. ALL DIMENSIONS SHOWN IN PARENTHESIS ARE REFERENCE DIMENSIONS.

PERFORMANCE CURVE	APPROVED SAMPLE		
SS0010425			
UL COMPONENT	CSA		
FILE#	CCN#	FILE#	GUIDE#
E44549	PRGY2	LR4642	4211-01
CUSTOMER	REGAL DISTRIBUTION		

DRAWING REVISION	REVISION BY	DATE	TOLERANCES UNLESS OTHERWISE SPECIFIED	DRAWN BY:	REGAL™ Regal Beloit America, Inc.	
A			DEC. INCH mm ANGLE	MEO		
ECO	APPROVED BY	DATE	.X ±0.1 [±2.5] ±0.5°	DATE:		
ECO-97871			.XX ±0.02 [±0.51]	03/07/16		
ECO DESCRIPTION			.XXX ±0.005 [±0.127]	APPROVED BY:	DESCRIPTION	
NEW			.XXXX ±0.0005 [±0.0127]	JDR	MODEL-CFHP-56FR	
<small>COPYRIGHT REGAL BELOIT AMERICA, INC. ALL RIGHTS RESERVED. PROPRIETARY AND CONFIDENTIAL INFORMATION - THIS DOCUMENT IS THE PROPERTY OF REGAL BELOIT AMERICA, INC. ("OWNER") AND CONTAINS OWNER'S PROPRIETARY INFORMATION. ANY PERSON, CORPORATION OR OTHER FIRM RECEIVING IT IS DEEMED, BY RECEIVING IT, TO AGREE THAT IT AND/OR ANY PART OF IT, SHALL NOT BE DISCLOSED TO ANY PERSON, CORPORATION OR OTHER ENTITY, DUPLICATED, AND/OR USED, EXCEPT AS EXPRESSLY APPROVED IN WRITING IN ADVANCE BY OWNER. THIS DOCUMENT SHALL BE RETURNED TO OWNER UPON REQUEST. IT MAY BE SUBJECT TO CERTAIN RESTRICTIONS UNDER APPLICABLE EXPORT CONTROL LAWS AND REGULATIONS.</small>			REMOVE BURRS & BREAK SHARP EDGES .003/.015 [0.076/.381] CORNER FILLETS .02 [1.51] MACHINED SURFACES $\sqrt{125}$ INCH/mm $\sqrt{32}$ mm SHOWN IN [BRACKETS]	DATE:	MATERIAL	PROCESS/FINISH
				03/07/16		
				REFERENCE		
				THIRD ANGLE PROJECTION	SIZE DWG NO	SHEET
					C H516ES	1