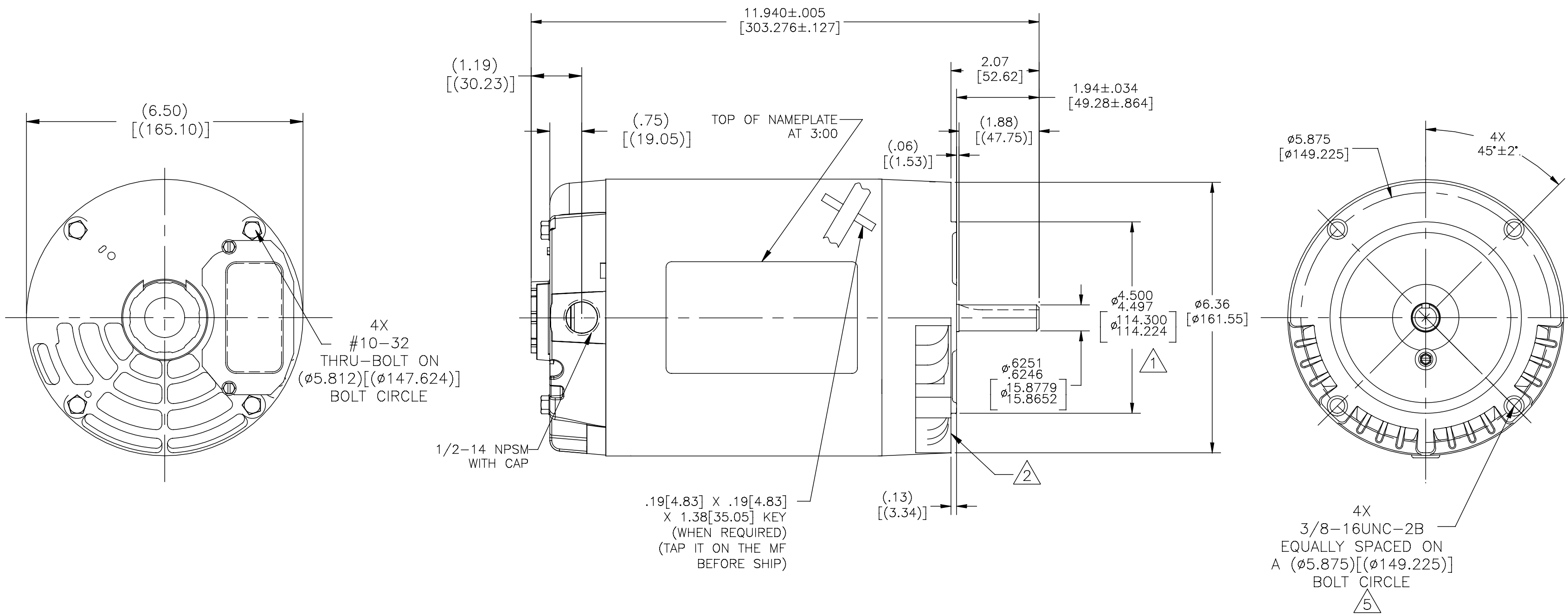


NOTES:

- ① PILOT DIAMETER IS CONCENTRIC WITH SHAFT CENTERLINE WITHIN .004[.10] T.I.R.
- ② FACE OF MOUNTING FLANGE IS PERPENDICULAR TO SHAFT CENTERLINE WITHIN .004[.10] T.I.R.
- 3 SHAFT RUNOUT NOT TO EXCEED .002[.05] T.I.R.
- 4 END PLAY NOT TO EXCEED .010[.25] MEASURED WITH NO THRUST.
- ⑤ DEPTH OF HOLES IN MOUNTING FLANGE ARE .75[19.1] FOR ALUMINUM, AND .63[16.0] FOR CAST IRON.



DRAWING REVISION B	REVISION BY X.AN	DATE 06-26-2015	TOLERANCES UNLESS OTHERWISE SPECIFIED			DRAWN BY: H.ZHANG	<b>REGAL™</b> Regal Beloit America, Inc.
ECO ECO-0079651	APPROVED BY H.ZHANG	DATE 06-26-2015	DEC.	INCH	mm	ANGLE	
ECO DESCRIPTION SEE ECO			.X	±0.1	[±2.5]	±0.5°	DESCRIPTION MODEL-PFHP-56FR
COPYRIGHT REGAL BELOIT AMERICA, INC. ALL RIGHTS RESERVED. PROPRIETARY AND CONFIDENTIAL INFORMATION - THIS DOCUMENT IS THE PROPERTY OF REGAL BELOIT AMERICA, INC. ("OWNER") AND CONTAINS OWNER'S PROPRIETARY INFORMATION. ANY PERSON, CORPORATION OR OTHER FIRM RECEIVING IT IS DEEMED, BY RECEIVING IT, TO AGREE THAT IT, AND/OR ANY PART OF IT, SHALL NOT BE DISCLOSED TO ANY PERSON, CORPORATION OR OTHER ENTITY, DUPLICATED, AND/OR USED, EXCEPT AS EXPRESSLY APPROVED IN WRITING IN ADVANCE BY OWNER. THIS DOCUMENT SHALL BE RETURNED TO OWNER UPON REQUEST. IT MAY BE SUBJECT TO CERTAIN RESTRICTIONS UNDER APPLICABLE EXPORT CONTROL LAWS AND REGULATIONS.			.XX	±0.02	[±0.51]		OUTLINE
			.XXX	±0.005	[±0.127]		MATERIAL
			.XXXX	±0.0005	[±0.0127]		PROCESS/FINISH
			REMOVE BURRS & BREAK SHARP EDGES .003/015 [076/381]				SIZE DWG NO C H258LES
			CORNER FILLETS .02 [51]				SHEET 1
			MACHINED SURFACES $\sqrt{125}$ INCH $\sqrt{3.2}$ mm SHOWN IN [BRACKETS]				
			THIRD ANGLE PROJECTION				