

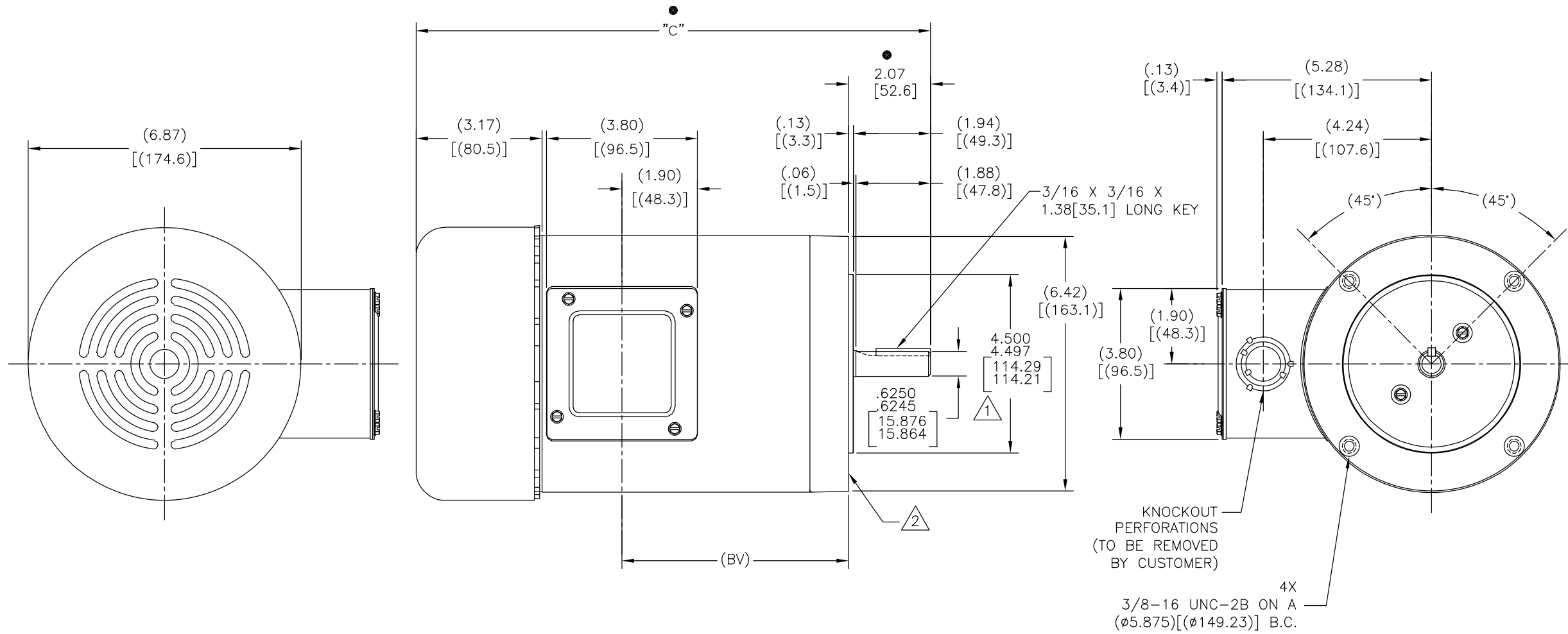
TYPE	FRAME	"C"	(BV)
SC	J56C	11.34[288.0]	4.09[103.9]

NOTES:

1. PILOT DIAMETER IS CONCENTRIC WITH SHAFT CENTERLINE WITHIN .004[.10] T.I.R.
2. FACE OF MOUNTING FLANGE IS PERPENDICULAR TO SHAFT CENTERLINE WITHIN .004[.10] T.I.R.
3. SHAFT RUNOUT NOT TO EXCEED .002[.05] T.I.R.
4. END PLAY NOT TO EXCEED .010[.25] MEASURED WITH NO THRUST

ALL DIMENSIONS SHOWN IN PARENTHESIS ARE REFERENCE DIMENSIONS. ALL OTHER DIMENSIONS ARE TOLERANCED PER THE FOLLOWING CHART UNLESS OTHERWISE SPECIFIED.

"C" DIM.	= +/- .055[1.40]
SHAFT EXT.	= +/- .034[.86]
LEAD LENGTHS	= +/- 1.00[25.4]
EXTENDED THRU-BOLTS	= +/- .050[1.27]
ANGULAR DIMS.	= +/- 2°



● = CRITICAL DIMENSION

DRAWING REVISION	REVISION BY	DATE	TOLERANCES UNLESS OTHERWISE SPECIFIED
A	A. BAUGHMAN	02-11-2015	DEC. INCH mm ANGLE
ECO	APPROVED BY	DATE	.XX ±0.02 [±0.51]
ECO-0071430	A. BAUGHMAN	02-11-2015	.XXX ±0.005 [±0.127]
ECO DESCRIPTION			.XXXX ±0.0005 [±0.0127]
NEW			REMOVE BURRS & BREAK SHARP EDGES .003/.015 [0.076/3.81]
<small>COPYRIGHT REGAL BELOIT AMERICA, INC. ALL RIGHTS RESERVED. PROPRIETARY AND CONFIDENTIAL INFORMATION - THIS DOCUMENT IS THE PROPERTY OF REGAL BELOIT AMERICA, INC. (OWNER) AND CONTAINS OWNER'S PROPRIETARY INFORMATION. ANY PERSON, CORPORATION OR OTHER FIRM RECEIVING IT IS DEEMED, BY RECEIVING IT, TO AGREE THAT IT, AND/OR ANY PART OF IT, SHALL NOT BE DISCLOSED TO ANY PERSON, CORPORATION OR OTHER ENTITY, DUPLICATED, AND/OR USED, EXCEPT AS EXPRESSLY APPROVED IN WRITING IN ADVANCE BY OWNER. THIS DOCUMENT SHALL BE RETURNED TO OWNER UPON REQUEST. IT MAY BE SUBJECT TO CERTAIN RESTRICTIONS UNDER APPLICABLE EXPORT CONTROL LAWS AND REGULATIONS.</small>			CORNER FILLETS .02 [1.51] MACHINED SURFACES $\frac{125}{\sqrt{}} \text{mm}$ mm SHOWN IN [BRACKETS]

DRAWN BY:	A. BAUGHMAN
DATE:	02-11-2015
APPROVED BY:	A. BAUGHMAN
DATE:	02-11-2015
REFERENCE	
THIRD ANGLE PROJECTION	

Regal Beloit America, Inc.	
DESCRIPTION	MODEL-CFHP-56FR OUTLINE
MATERIAL	
PROCESS/FINISH	
SIZE DWG NO	C H193V1
SHEET	1