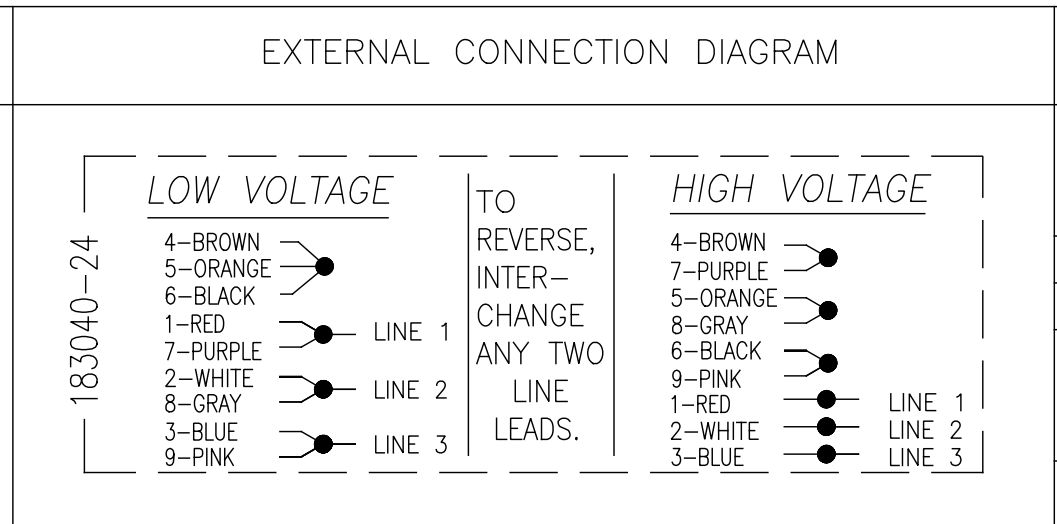
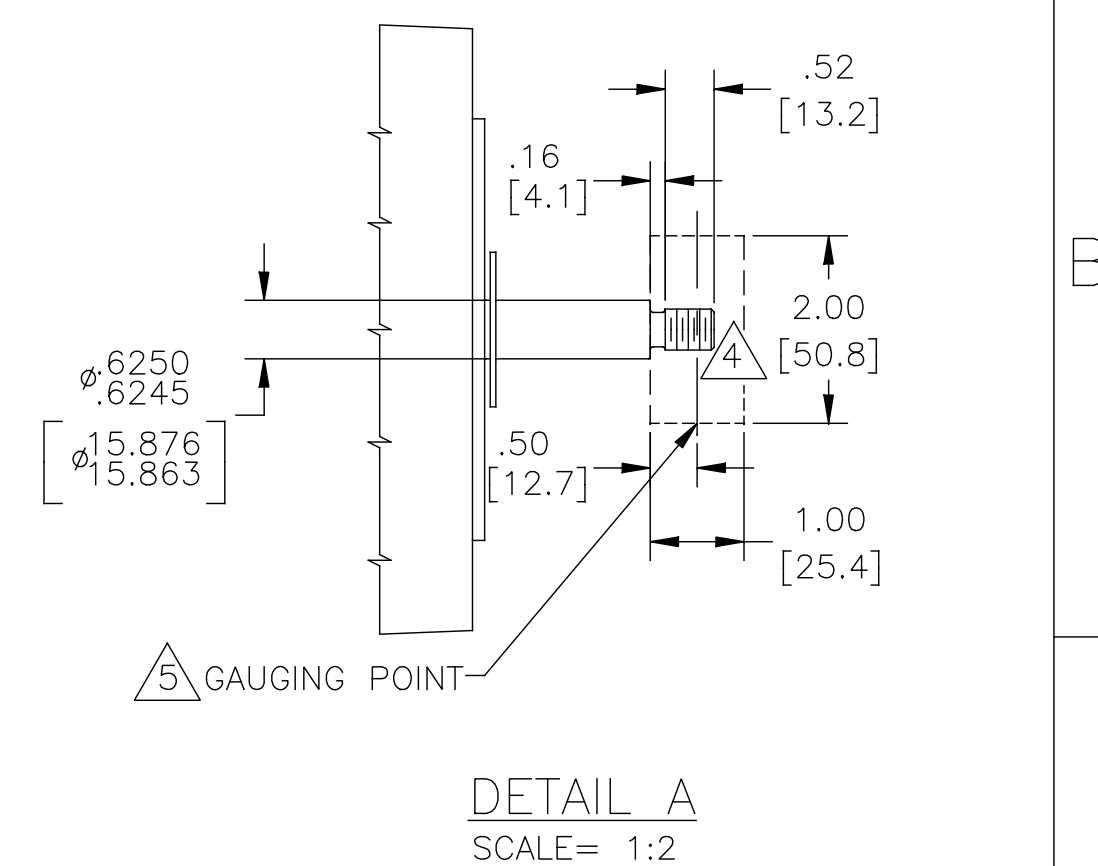


NAMEPLATE DATA
MODEL: 187147 CUST. P/N: H155 HP: 1/2 SF: 1.60 ROT: RCW RPM: 3450/2850 TYPE: SC CODE: M FRAME: K 56 J VOLTS: 208-230/460 AMPS: SF 2.6-2.6/1.3 MAX AMPS: PH: 3 HZ: 60/50 INS: B AMB: 40°C DUTY: CONT



PERFORMANCE CURVE NO.		APPROVED SAMPLE OR REF. MODEL	
19200121			
UL COMPONENT		CSA	
FILE#	CCN#	FILE#	CLASS#
E44549	PRGY2	LR4642	4211-01
ENCLOSURE: ODP		CUSTOMER: DISTRIBUTION	

- NOTES:
- 1. PILOT DIAMETER IS CONCENTRIC WITH SHAFT CENTERLINE WITHIN .004 T.I.R.
  - 2. FACE OF MOUNTING FLANGE IS PERPENDICULAR TO SHAFT CENTERLINE WITHIN .004 T.I.R.
  - 3. SHAFT RUNOUT NOT TO EXCEED .002 T.I.R.
  - 4. FOR THREADED SHAFT EXT. MATING PARTS SHOULD BE RELIEVED ONE THREAD TO CLEAR FILLET.
  - 5. FOR THREADER SHAFT EXT. ECCENTRICITY OF THREADED PORTION OF SHAFT IS HELD WITHIN .004 TOTAL GAGE READING WITH THE INDICATOR ON O.D. OF GROUND RING AS SHOWN. THE GAGE BEING STATIONARY WITH RESPECT TO THE ROTOR.
  - 6. END PLAY NOT TO EXCEED .010 MEASURED WITH NO THRUST
  - 7. ALL DIMENSIONS SHOWN IN PARENTHESIS ARE REFERENCE DIMENSIONS.



DRAWING REVISION ECO-0112464 APPROVED BY: A.BAUGHMAN DATE: 12-12-2016 ECO DESCRIPTION UPDATED TO NEW REGAL TITLEBLOCK		REVISION BY: A.BAUGHMAN DATE: 12-12-2016		TOLERANCES UNLESS OTHERWISE SPECIFIED DEC. INCH mm ANGLE .XX ±0.1 [±2.5] ±0.5° .XX ±0.02 [±0.51] .XXX ±0.005 [±0.127] .XXXX ±0.0005 [±0.0127] REMOVE BURRS & BREAK SHARP EDGES .003/.015 [.076/.381] X 45° CORNER FILLETS R.02 [.51] MACHINED SURFACES 125/3.2 INCH/mm		DRAWN BY: KHR DATE: 09-08-2005 APPROVED BY: DATE: REFERENCE:		REGAL™ Regal Beloit America, Inc. DESCRIPTION: MODEL-CFHP-56FR OUTLINE MATERIAL: - PROCESS/FINISH: - SIZE DWG NO: 12687-007 SHEET: 1	
--	--	---	--	--	--	--	--	--	--