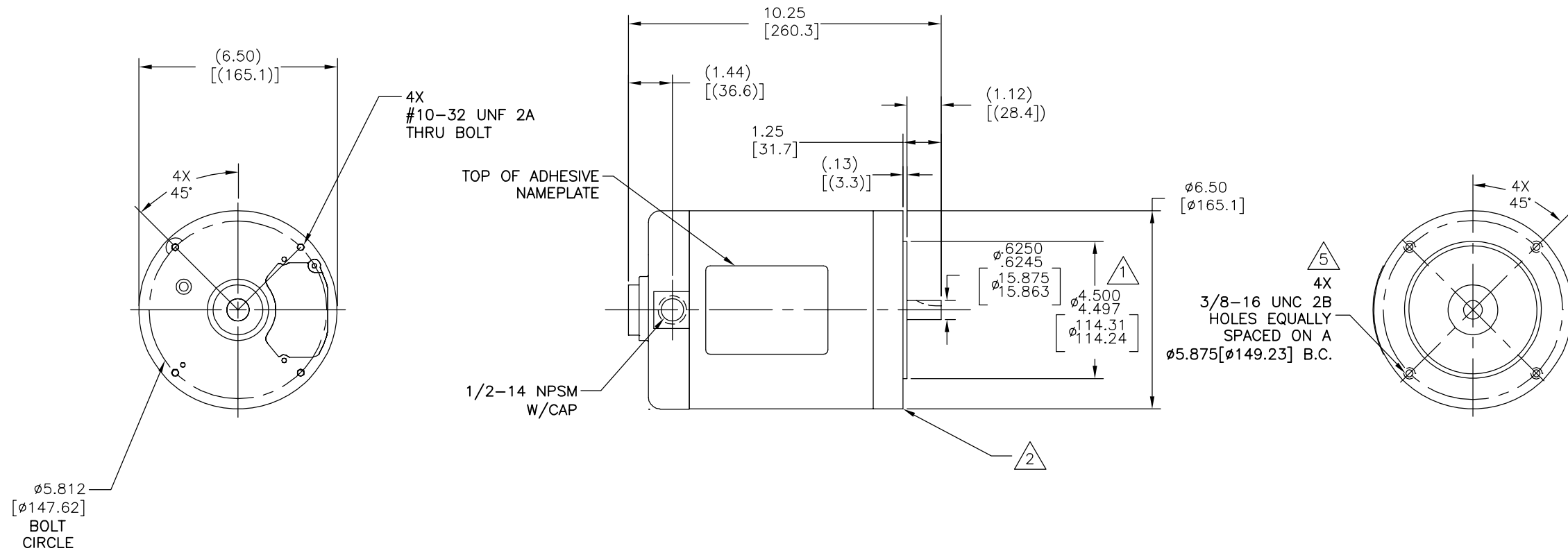


| REV | ECO | REV BY | DATE | APPD | DATE |
|-----|---------|-----------|------------|----------|------------|
| B | 0025408 | F.NAVARRO | 04-17-2012 | R.RASCON | 04-17-2012 |



NOTES:

- 1 PILOT DIAMETER IS CONCENTRIC WITH SHAFT CENTERLINE WITHIN .004[.10] T.I.R.
- 2 FACE OF MOUNTING FLANGE IS PERPENDICULAR TO SHAFT CENTERLINE WITHIN .004[.10] T.I.R.
- 3 SHAFT RUNOUT NOT TO EXCEED .002[.05] T.I.R.
- 4 END PLAY NOT TO EXCEED .010 [.25] MEASURED WITH NO THRUST
- 5 DEPTH OF HOLES IN MOUNTING FLANGE ARE .75[19.1] FOR ALUM. AND .63[16.0] FOR CAST IRON.

GEOMETRIC CHARACTERISTICS & SYMBOLS

- FLATNESS
- STRAIGHTNESS
- ∠ ANGULARITY
- ⊥ PERPENDICULARITY (SQUARENESS)
- ∥ PARALLELISM
- ROUNDNESS (CIRCULARITY)
- ⊘ CYLINDRICITY
- △ PROFILE OF ANY SURFACE
- ⌒ PROFILE OF ANY LINE
- ↗ RUNOUT
- ⊕ TRUE POSITION
- ⊙ CONCENTRICITY
- ≡ SYMMETRY

ASME Y14.5M 1994

UNLESS OTHERWISE SPECIFIED DIM. TOLERANCES ARE AS FOLLOWS:

| | | | | |
|------|------|-------|--------|--------|
| INCH | ±.1 | ±.02 | ±.005 | ±.0005 |
| mm | ±0.5 | ±0.13 | ±0.013 | |

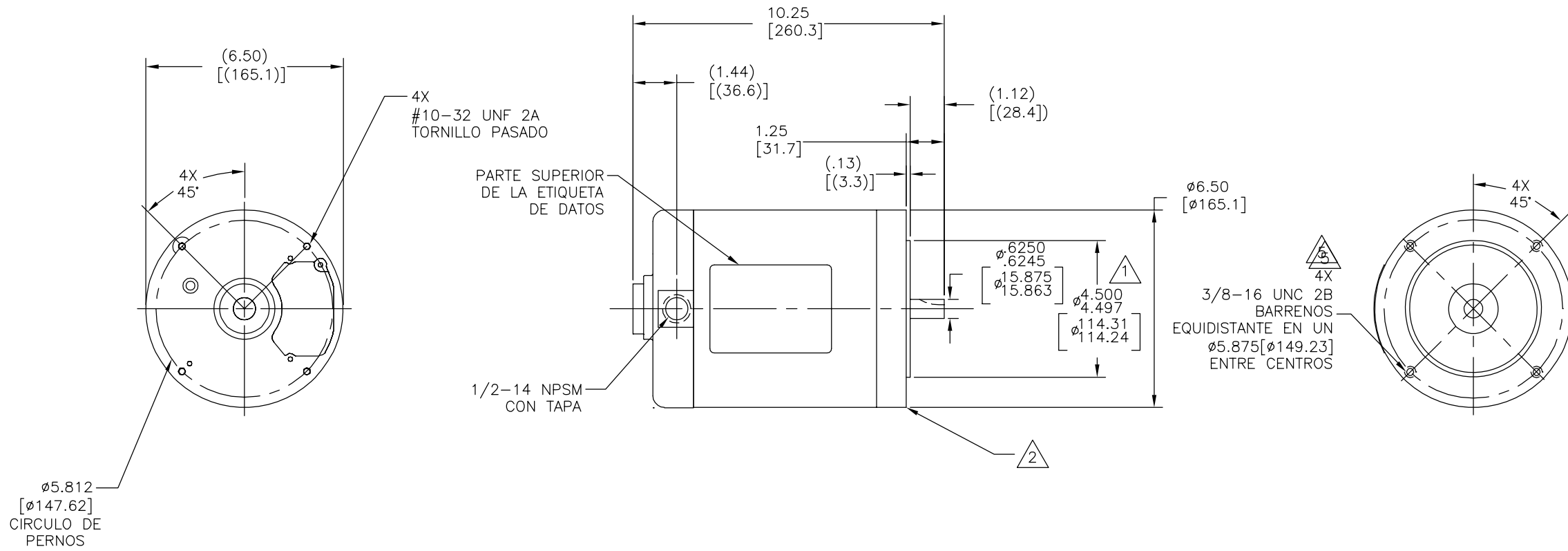
ANG. ±.50 DEG
REMOVE BURRS & BREAK SHARP EDGES:
INCH .003-.015 mm 0.1-0.4
CORNER FILLETS TO:
INCH .020 mm 0.5
MACHINE SURFACES:
INCH 125 mm 3.2
METRIC DIMS. SHOWN IN [BRACKETS]

| | | |
|------------------------|------------|------------|
| DR BY: | AL | 09-16-2010 |
| APPD: | TC | 09-16-2010 |
| THIRD ANGLE PROJECTION | EDS DATE | 11-11-2011 |
| | FORMAT REV | G |

CONFIDENTIAL: THIS DRAWING AND ITS INFORMATION ARE THE EXCLUSIVE AND CONFIDENTIAL PROPERTY OF REGAL-BELOIT CORPORATION AND ARE NOT TO BE DISCLOSED, DUPLICATED, DISTRIBUTED OR OTHERWISE USED WITHOUT THE WRITTEN CONSENT OF REGAL-BELOIT CORPORATION. -ALL RIGHTS RESERVED.

| | |
|------------------------|------------------|
| | |
| DESCRIPTION OUTLINE | |
| SIZE C | DWG NO H1043L |
| SCALE NONE | SHEET 1 |

| | | | | | | | | | |
|-----------|---------|---------------|-----------|--------|------------|---------------|----------|--------|------------|
| REVISION: | ECO | REVISADO POR: | F.NAVARRO | FECHA: | 04-17-2012 | APROBADO POR: | R.RASCON | FECHA: | 04-17-2012 |
| B | 0025408 | | | | | | | | |



NOTAS:

- 1 EL DIAMETRO DEL PILOTO ES CONCENTRICO CON LA LINEA DE CENTRO DE LA FLECHA .004[.10] L.T.I.
- 2 LA CARA DEL MONTAJE DEL BORDE ES PERPENDICULAR A LA LINEA DE CENTRO DE LA FLECHA DENTRO DE .004[.10] L.T.I.
- 3 MAXIMA OSCILACION DE FLECHA NO DEBE EXCEDER .002[.05] L.T.I.
- 4 JUEGO AXIAL NO EXCEDERA .010[.25] MEDIDA SIN EMPUJE.
- 5 PROFUNDIDA DE BARRENOS EN BORDE DE MONTAJE, SON .75[19] PARA ALUMINIO Y .63[16] PARA HIERRO FUNDIDO.

| | | | | | |
|---|--|---|--|--------------|--------------------------|
| CARACTERISTICAS DE GEOMETRIA Y SIMBOLOS ▽ PLANICIDAD — RECTITUD ∠ ANGULARIDAD ⊥ PERPENDICULARIDAD (A ESCUADRA) // PARALELISMO ○ REDONDEZ (CIRCULARIDAD) ∅ CILINDRICIDAD △ PERFIL DE CUALQUIER SUPERFICIE ∩ PERFIL DE CUALQUIER LINEA ↑ VARIACION ⊕ POSICION REAL ⊙ CONCENTRICIDAD = SIMETRIA | A MENOS QUE SE ESPECIFIQUE DE OTRA MANERA, LAS TOLERANCIAS DE LAS DIMS; SON LAS SIGUIENTES: PULG X XX XXX XXXX mm ±.1 ±.02 ±.005 ±.0005 mm ±0.5 ±0.13 ±0.013 ANG. ±.50 GRADOS ELIMINAR REBABAS Y ORILLAS FILOSAS DEL BORDE. PULG .003-.015 mm 0.1-0.4 FILETEAR ESQUINA: PULG .020 mm 0.5 MAQUINAR SUPERFICIES PULG 125 mm 3.2 | DIBUJADO POR: AL | 09-16-2010 | | DESCRIPCION: OUTLINE |
| | | APROBADO POR: TC | 09-16-2010 | | |
| | | TERCER ANGULO DE PROYECCION | FECHA EDS: 11-11-2011 REV. FORMATO: G | TAMAÑO: C | NUMERO DE DIBUJO: H1043L |
| | | CONFIDENCIAL: ESTE DIBUJO Y SU INFORMACION SON PROPIEDAD DE USO EXCLUSIVO Y CONFIDENCIAL DE REGAL-BELOIT CORPORATION. Y NO DEBERAN SER REVELADOS, DUPLICADOS, DISTRIBUIDOS O USARSE DE OTRA MANERA SIN EL CONSENTIMIENTO ESCRITO DE REGAL-BELOIT CORPORATION. -TODOS LOS DERECHOS RESERVADOS. | | ESCALA: NONE | HOJA: 1 |

D
C
B
A

D
C
B
A

4
3
2
1

4
3
2
1

4
3
2
1

4
3
2
1

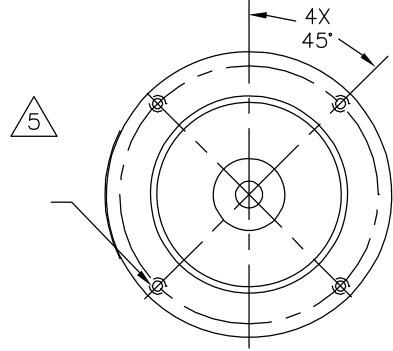
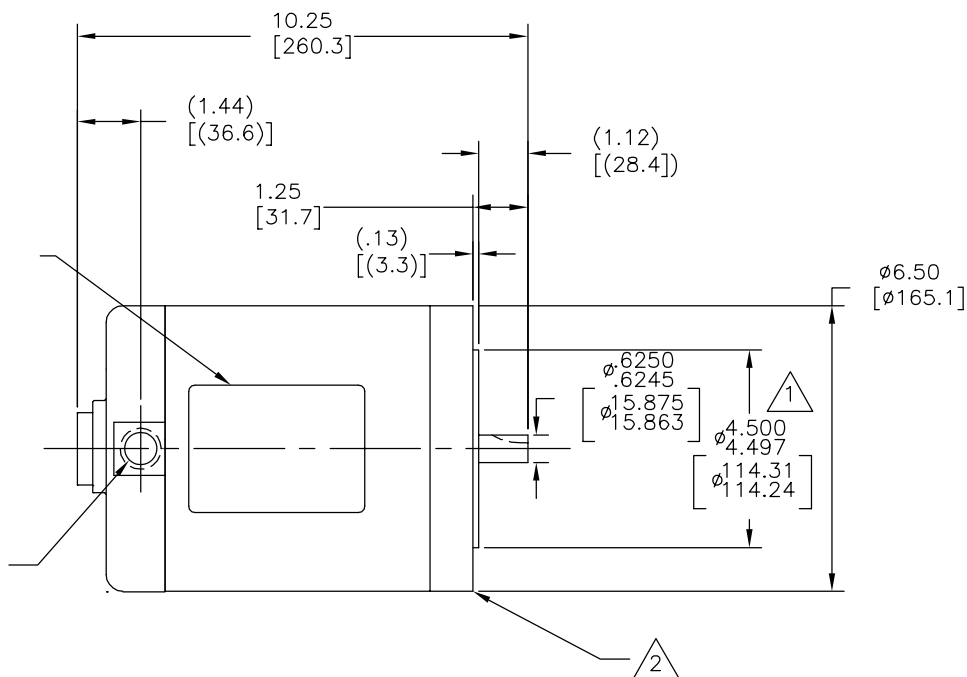
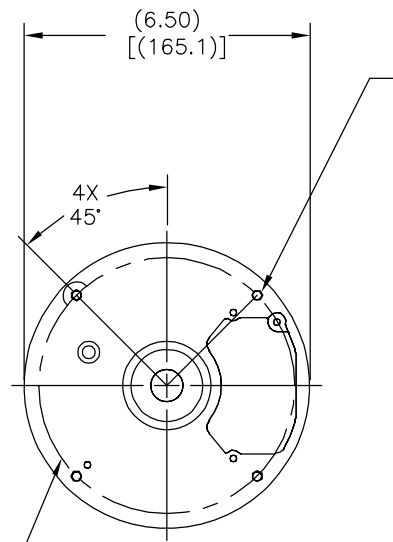
4

3

2

1

| | | | | | |
|----|---------|-----------|------------|----------|------------|
| 版本 | ECO | 编制 | 日期 | 批准 | 日期 |
| B | 0025408 | F.NAVARRO | 04-17-2012 | R.RASCON | 04-17-2012 |



ø5.812
[ø147.62]

| |
|--------|
| 形位公差 |
| □ 平面度 |
| — 直线度 |
| ∠ 倾斜度 |
| ⊥ 垂直度 |
| ∥ 平行度 |
| ○ 圆度 |
| ⊙ 圆柱度 |
| ⌒ 面轮廓度 |
| ⌒ 线轮廓度 |
| ↗ 圆跳动 |
| ⊕ 位置度 |
| ⊙ 同轴度 |
| ≡ 对称度 |

ASME Y14.5M 1994

| |
|--------------------------|
| 除另有注明 尺寸公差如下: |
| 英寸 X XX XXX XXXX |
| 毫米 ±.1 ±.02 ±.005 ±.0005 |
| 毫米 ±0.5 ±0.13 ±0.013 |
| 角度 ±.50 度 |
| 清理毛刺和尖棱 |
| 英寸 .003-.015 毫米 0.1-0.4 |
| 内圆角 |
| 英寸 .020 毫米 0.5 |
| 表面粗糙度 |
| 英制 125 米制 3.2 |
| 米制尺寸显示在 [] |

| | | |
|--|----|---------------------------------|
| 绘图: | AL | 09-16-2010 |
| 批准: | TC | 09-16-2010 |
| 第三角投影 | | 图纸格式发布日期 11-11-2011 图纸格式版本 G |
| 机密: 本图纸及相关信息所有权归REGAL-BELOIT CORPORATION。未经REGAL-BELOIT CORPORATION书面授权, 不得泄露、复制、传播或作其他用途。--版权所有 | | |



OUTLINE

| | | |
|----|---------|-----------|
| 名称 | OUTLINE | |
| 图幅 | C | 图号 H1043L |
| 比例 | NONE | 页号 1 |

4

3

2

1