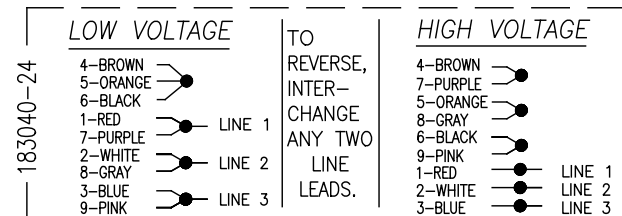


NAMEPLATE DATA

MODEL: H1013ES  
 CUST PN: P56AH86A01  
 HP: 1.5 SF: 1.15  
 ROT: RCC  
 RPM: 3450  
 TYPE: SC CODE: L  
 FORM: FRAME: K56C  
 VOLTS: 230/460  
 AMPS: 4.0/2.0  
 MAX AMPS: -  
 SF AMPS: 4.4/2.2  
 PH: 3 HZ: 60  
 INS: B AMB: 40°C  
 DUTY: CONT  
 ENCLOSURE: TEFC

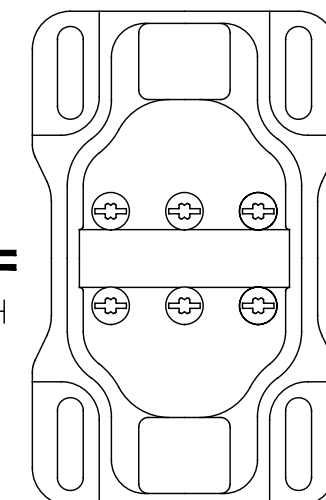
EXTERNAL CONNECTION DIAGRAM



NOTES

- ▲ PILOT DIAMETER IS CONCENTRIC WITH SHAFT CENTERLINE WITHIN .004 T.I.R.
- ▲ FACE OF MOUNTING FLANGE IS PERPENDICULAR TO SHAFT CENTERLINE WITHIN .004 T.I.R.
- 3. SHAFT RUNOUT NOT TO EXCEED .002 T.I.R.
- 4. FOR THREADED SHAFT EXT. MATING PARTS SHOULD BE RELIEVED ONE THREAD TO CLEAR FILLET.
- ▲ FOR THREADED SHAFT EXT. ECCENTRICITY OF THREADED PORTION OF SHAFT IS HELD WITHIN .004 TOTAL GAGE READING WITH THE INDICATOR ON O.D. OF GROUND RING AS SHOWN, THE GAGE BEING STATIONARY WITH RESPECT TO THE ROTOR.
- 6. END PLAY NOT TO EXCEED .010 MEASURED WITH NO THRUST
- 7. ALL DIMENSIONS SHOWN IN PARENTHESIS ARE REFERENCE DIMENSIONS.

**CAUTION:**  
 BASE TO BE ATTACHED WITH SCREWS. DO NOT WELD.



|                             |       |                 |         |
|-----------------------------|-------|-----------------|---------|
| PERFORMANCE CURVE           |       | APPROVED SAMPLE |         |
| SS0098312                   |       | CSA             |         |
| UL COMPONENT                | FILE# | CCN#            | GUIDE#  |
| E44549                      | PRGY2 | LR4642          | 4211-01 |
| CUSTOMER REGAL DISTRIBUTION |       |                 |         |

|                  |                       |            |   |
|------------------|-----------------------|------------|---|
| DRAWING REVISION | REVISION BY           | DATE       | TOLERANCES UNLESS OTHERWISE SPECIFIED                   |
| A                | M.RODARTE             | 03-29-2016 | DEC. INCH mm ANGLE                                      |
| ECO 0099292      | APPROVED BY M.RODARTE | 03-29-2016 | .XX ±0.1 [±2.5] ±0.5°                                   |
| ECO DESCRIPTION  |                       |            | .XX ±0.02 [±0.51]                                       |
| NEW              |                       |            | .XXX ±0.005 [±0.127]                                    |
|                  |                       |            | .XXXX ±0.0005 [±0.0127]                                 |
|                  |                       |            | REMOVE BURRS & BREAK SHARP EDGES .003/.015 [0.076/.381] |
|                  |                       |            | CORNER FILLETS .02 [51]                                 |
|                  |                       |            | MACHINED SURFACES 125/3.2                               |
|                  |                       |            | mm SHOWN IN [BRACKETS]                                  |

|                        |                                     |                |
|------------------------|-------------------------------------|----------------|
| DRAWN BY: M.RODARTE    | REGAL™ Regal Beloit America, Inc.   |                |
| DATE: 03-29-2016       |                                     |                |
| APPROVED BY: M.RODARTE | DESCRIPTION MODEL-CFHP-56FR OUTLINE |                |
| DATE: 03-29-2016       |                                     |                |
| REFERENCE              | MATERIAL                            | PROCESS/FINISH |
| THIRD ANGLE PROJECTION | SIZE DWG NO                         | SHEET          |
|                        | C H1013ES                           | 1              |