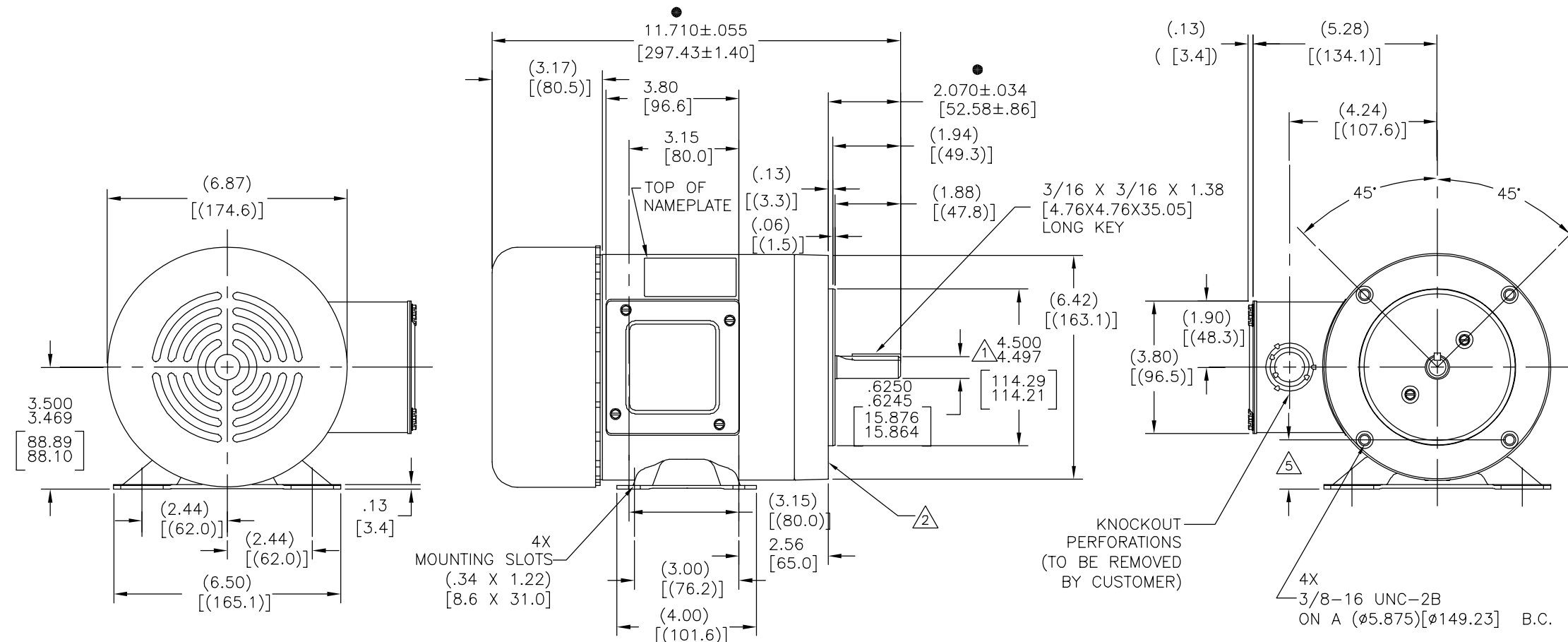
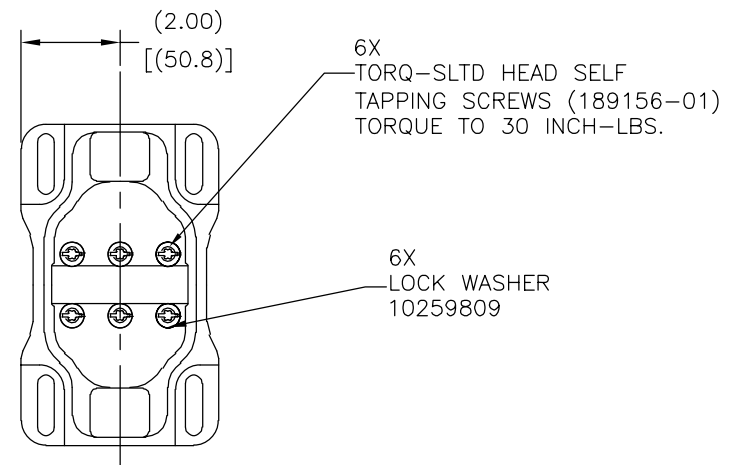


REV	ECO	REV BY	DATE	APPD	DATE
E	0025378	I. ORTIZ	04-13-2012	D. BALDERRAMA	04-13-2012



**CAUTION:**  
BASE TO BE ATTACHED WITH SCREWS. DO NOT WELD.

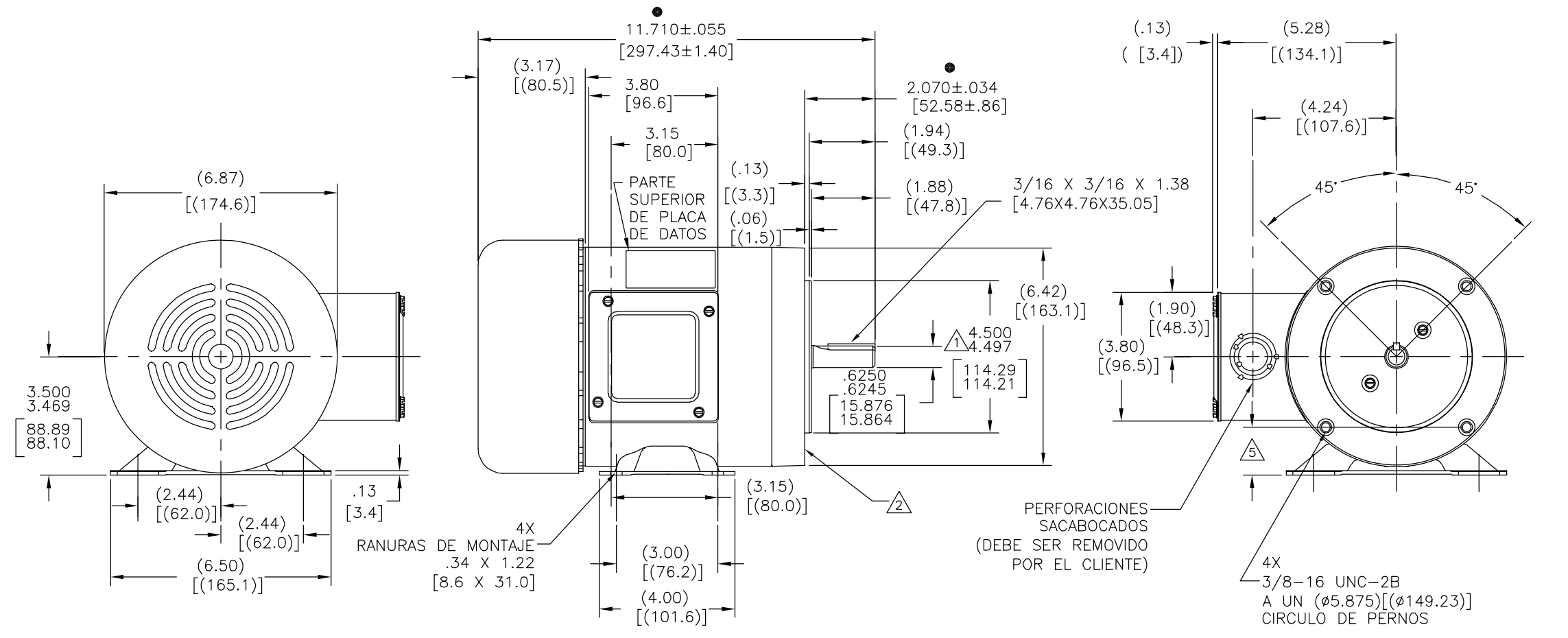


- NOTES:
- PILOT DIAMETER IS CONCENTRIC WITH SHAFT CENTERLINE WITHIN .004 [.10] T.I.R.
  - FACE OF MOUNTING FLANGE IS PERPENDICULAR TO SHAFT CENTERLINE WITHIN .004 [.10] T.I.R.
  - SHAFT RUNOUT NOT TO EXCEED .002 [.05] T.I.R.
  - END PLAY NOT TO EXCEED .010 [.25] MEASURED WITH NO THRUST
  - THE 2 BOTTOM HOLES IN THE MTG. FLANGE ARE PARALLEL FROM THE BOTTOM OF THE FEET WITHIN .030 [.76].

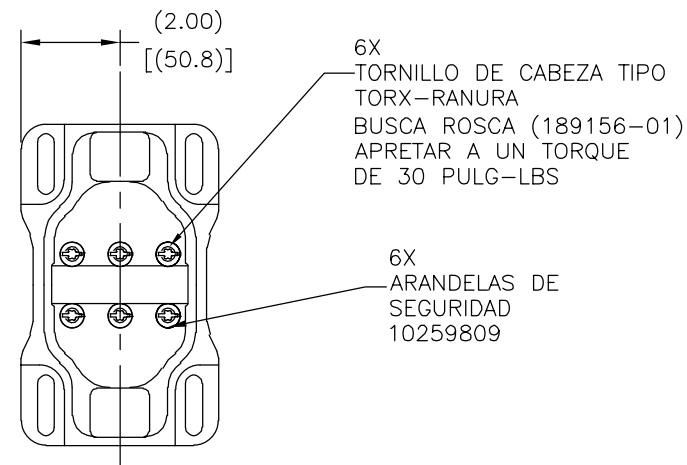
● = CRITICAL DIMENSION

GEOMETRIC CHARACTERISTICS & SYMBOLS ▭ FLATNESS — STRAIGHTNESS ∠ ANGULARITY ⊥ PERPENDICULARITY (SQUARENESS) // PARALLELISM ○ ROUNDNESS (CIRCULARITY) ∅ CYLINDRICITY △ PROFILE OF ANY SURFACE ∩ PROFILE OF ANY LINE ↗ RUNOUT ⊕ TRUE POSITION ⊙ CONCENTRICITY = SYMMETRY ASME Y14.5M 1994	UNLESS OTHERWISE SPECIFIED DIM. TOLERANCES ARE AS FOLLOWS: INCH X XX XXX XXXX ±.1 ±.02 ±.005 ±.0005 mm ±0.5 ±0.13 ±0.013 ANG. ±50 DEG REMOVE BURRS & BREAK SHARP EDGES: INCH .003-.015 mm 0.1-0.4 CORNER FILLETS TO: INCH .020 mm 0.5 MACHINE SURFACES: INCH 125 mm 3.2 METRIC DIMS. SHOWN IN [BRACKETS]	DR BY: RX	04-01-2010	REGAL-BELOIT CORPORATION DESCRIPTION OUTLINE	
		APPD: MH	04-01-2010		EDS DATE 11-11-2011
		THIRD ANGLE PROJECTION	FORMAT REV G	SCALE NONE	SHEET 1
		CONFIDENTIAL: THIS DRAWING AND ITS INFORMATION ARE THE EXCLUSIVE AND CONFIDENTIAL PROPERTY OF REGAL-BELOIT CORPORATION AND ARE NOT TO BE DISCLOSED, DUPLICATED, DISTRIBUTED OR OTHERWISE USED WITHOUT THE WRITTEN CONSENT OF REGAL-BELOIT CORPORATION. -ALL RIGHTS RESERVED.			

REVISION:	ECO	REVISADO POR:	FECHA:	APROBADO POR:	FECHA:
E	0025378	I. ORTIZ	04-13-2012	D. BALDERRAMA	04-13-2012



**PRECAUCION:**  
BASE DEBE SE AGREGADA CON  
TORNILLOS. NO SOLDADA.



- NOTAS:
1. EL DIAMETRO DEL PILOTO ES CONCENTRICO CON LA  $\perp$  DE LA FLECHA DENTRO DE .004[.10] L.T.I.
  2. LA CARA DE REVORDE DE MONTAJE SERA MAQUINADO Y PERPENDICULAR A LA  $\perp$  DE FLECHA DENTRO DE .004[.10] L.T.I.
  3. EL DESGASTE DE LA FLECHA NO DEBE EXCEDER DE .002[.05] L.T.I.
  4. EL JUEGO AXIAL NO DEBE EXCEDER .010[.25] PRECISO CON LA ROSCA
  5. LOS BARRENOS INFERIORES SOBRE EL BORDE SERAN PARALELOS PARA LA BASE INFERIOR DE ACUERDO .030[.76]

● = DIMENSION CRITICA

CARACTERISTICAS DE GEOMETRIA Y SIMBOLOS ▽ PLANICIDAD — RECTITUD ∠ ANGULARIDAD ⊥ PERPENDICULARIDAD (A ESQUADRA) // PARALELISMO ○ REDONDEZ (CIRCULARIDAD) ∅ CILINDRICIDAD △ PERFIL DE CUALQUIER SUPERFICIE ∩ PERFIL DE CUALQUIER LINEA ↗ VARIACION ⊕ POSICION REAL ⊙ CONCENTRICIDAD = SIMETRIA ASME Y14.5M 1994	A MENOS QUE SE ESPECIFIQUE DE OTRA MANERA, LAS TOLERANCIAS DE LAS DIMS; SON LAS SIGUIENTES: PULG ±.1 ±.02 ±.005 ±.0005 mm ±0.5 ±0.13 ±0.013 ANG. ±50 GRADOS ELIMINAR REBABAS Y ORILLAS FILOSAS DEL BORDE. PULG .003-.015 mm 0.1-0.4 FILETEAR ESQUINA: PULG .020 mm 0.5 MAQUINAR SUPERFICIES PULG 125 mm 3.2 DIMS METRICAS MOSTRADAS [PARENTESIS]	DIBUJADO POR: RX 04-01-2010	DESCRIPCION: OUTLINE	
		APROBADO POR: MH 04-01-2010		TERCER ANGULO DE PROYECCION ⊕ FECHA EDS: 11-11-2011 REV. FORMATO: G
		ESCALA: NONE		HOJA: 1

D  
C  
B  
A

D  
C  
B  
A

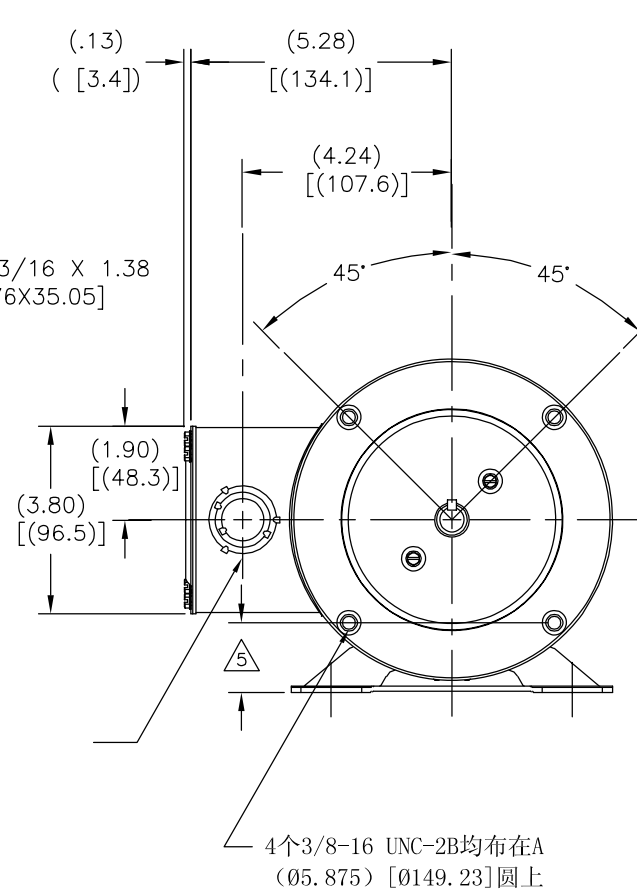
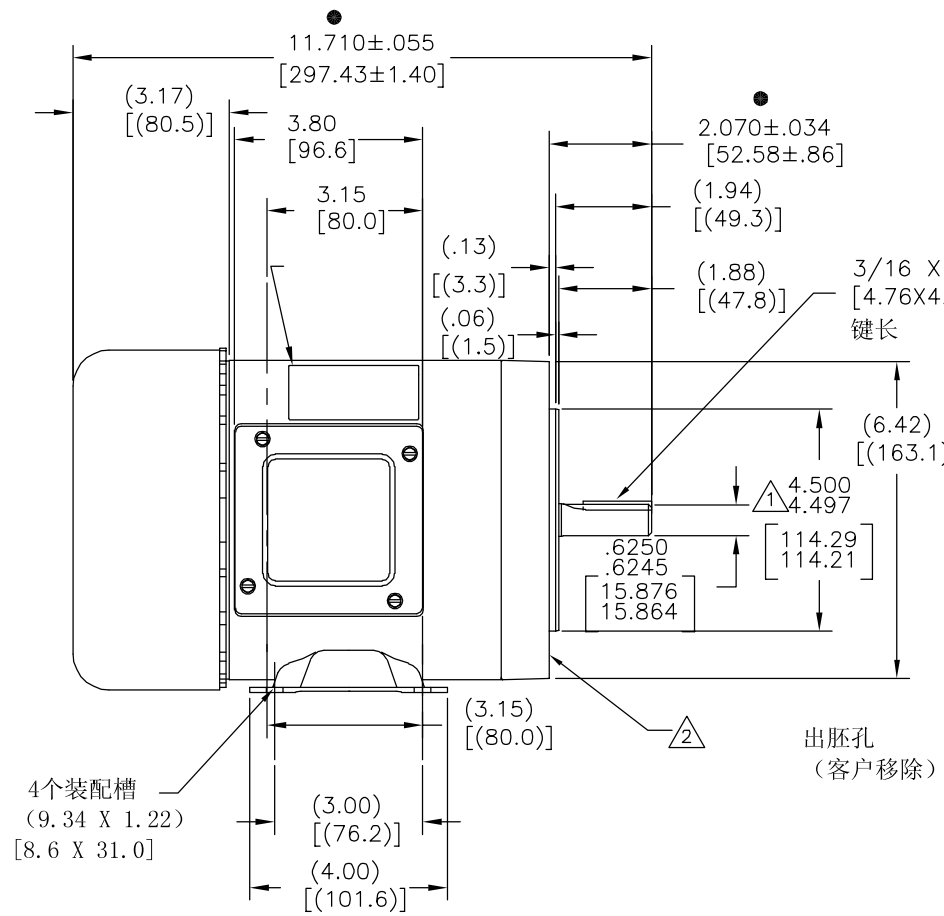
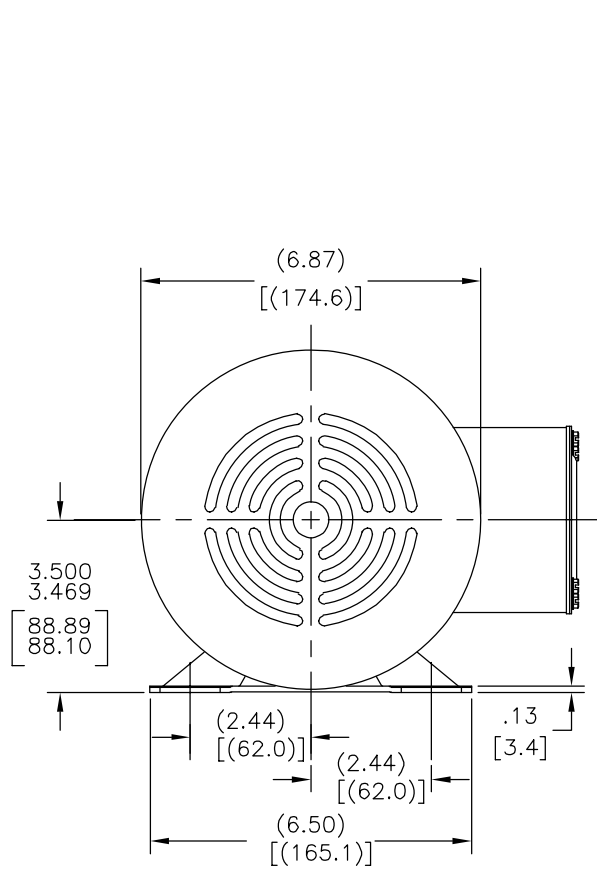
4

3

2

1

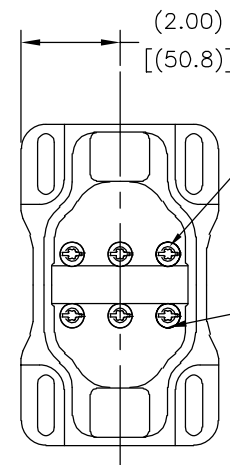
版本	ECO	编制	日期	批准	日期
E	0025378	I. ORTIZ	04-13-2012	D. BALDERRAMA	04-13-2012



4个装配槽  
(9.34 X 1.22)  
[8.6 X 31.0]

出胚孔  
(客户移除)

4个3/8-16 UNC-2B均布在A  
(Ø5.875) [Ø149.23]圆上



6个TORP-SLTD自攻螺钉189156-001  
扭矩30英寸磅

6个锁紧垫圈  
10259809

- 技术要求:
- ① 引导直径与轴中心同轴度在.004[.10]T. I. R. 内.
  - ② 法兰装配表面与轴中心垂直度在.004[.10]T. I. R. 内.
  - 3. 轴跳动不超过.002[.05]T. I. R.
  - 4. 无推力测量轴间隙不超过.010[.25].
  - ⑤ 在装配槽有2底孔。法兰与底部平行在.030[.76]内.

**警告**  
底座是用螺钉安装的, 不是焊接的。

● = 关键尺寸

形位公差	除另有注明 尺寸公差如下:
□ 平面度	英寸 ±.1 XX ±.02 XXX ±.005 XXXX ±.0005
— 直线度	毫米 ±0.5 ±0.13 ±0.013
∠ 倾斜度	角度 ±.50 度
⊥ 垂直度	清理毛刺和尖棱
// 平行度	英寸 .003-.015 毫米 0.1-0.4
○ 圆度	内圆角
⊙ 圆柱度	英寸 .020 毫米 0.5
△ 面轮廓度	表面粗糙度
∩ 线轮廓度	英制 125 米制 3.2
↗ 圆跳动	米制尺寸显示在 [ ]
⊕ 位置度	
◎ 同轴度	
≡ 对称度	

绘图:	RX	04-01-2010
批准:	MH	04-01-2010
第三角投影	⊕	图纸格式发布日期 11-11-2011 图纸格式版本 G
机密: 本图纸及相关信息所有权归REGAL-BELOIT CORPORATION. 未经REGAL-BELOIT CORPORATION书面授权, 不得泄露、 复制、传播或作其他用途。—版权所有		

名称		REGAL-BELOIT CORPORATION
名称		OUTLINE
图幅	C	图号 H1008L
比例	NONE	页号 1

ASME Y14.5M 1994	米制尺寸显示在 [ ]
------------------	-------------

4

3

2

1