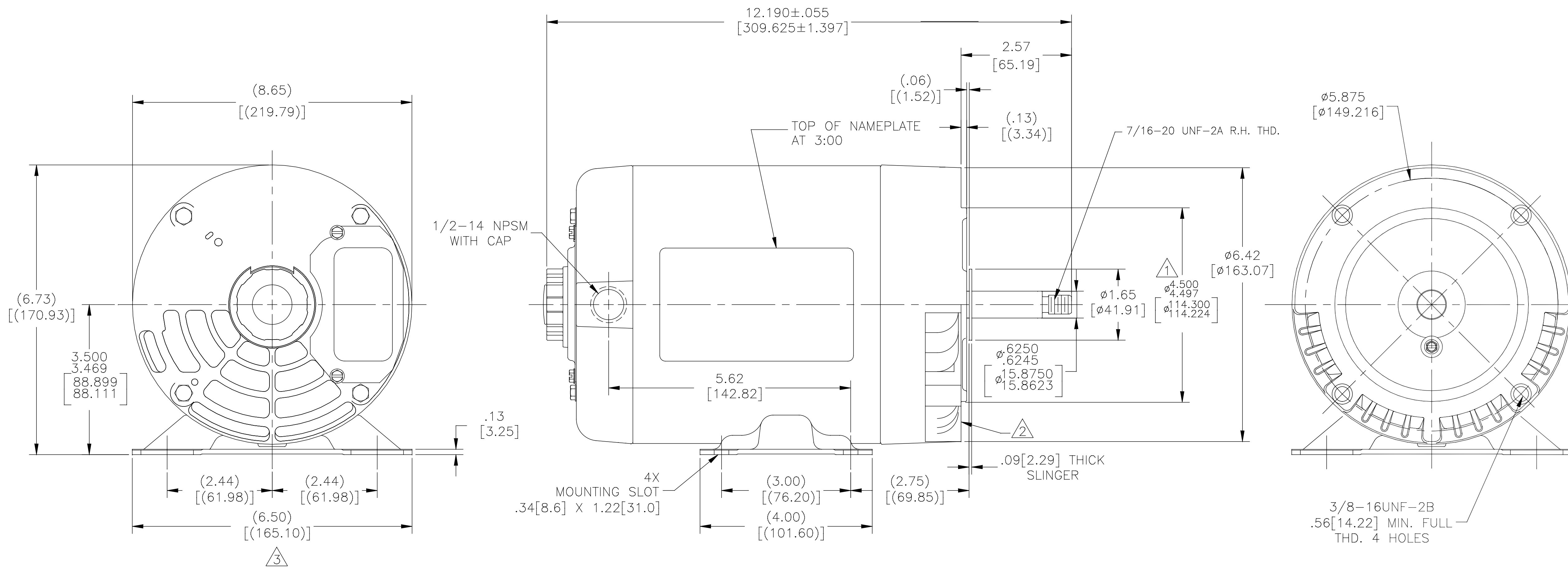


NOTES:

- 1. PILOT DIAMETER IS CONCENTRIC WITH SHAFT CENTERLINE WITHIN .004[.102] T.I.R.
 - 2. FACE OF MOUNTING FLANGE IS PERPENDICULAR TO SHAFT CENTERLINE WITHIN .004[.102] T.I.R.
 - 3. CAUTION: BASE TO BE ATTACHED WITH SCREWS, DO NOT WELD!
- = CRITICAL DIMENSION



DRAWING REVISION B	REVISION BY X.JAN	DATE 06-26-2015	TOLERANCES UNLESS OTHERWISE SPECIFIED DEC. INCH mm ANGLE	DRAWN BY H.ZHANG	Regal Beloit America, Inc. DESCRIPTION MODEL-CFHP-56FR OUTLINE
ECO-0079651	APPROVED BY H.ZHANG	DATE 06-26-2015	.XX ±0.1 [±2.5] ±0.5° .XX ±0.02 [±0.51] .XXX ±0.005 [±0.127] .XXXX ±0.0005 [±0.0127]	DATE 12-23-2014	
ECO DESCRIPTION SFP-ECO			REMOVE BURRS & BREAK SHARP EDGES .003/0.15 [0.076/.381] CORNER FILLETS .02 [51] MACHINED SURFACES $\frac{125}{\sqrt{}} \sqrt{}$ INCH/mm $\frac{32}{\sqrt{}} \sqrt{}$ mm SHOWN IN [BRACKETS]	APPROVED BY H.ZHANG	MATERIAL
COPYRIGHT REGAL BELOIT AMERICA, INC. ALL RIGHTS RESERVED. PROPRIETARY AND CONFIDENTIAL INFORMATION - THIS DOCUMENT IS THE PROPERTY OF REGAL BELOIT AMERICA, INC. (OWNER) AND CONTAINS OWNER'S PROPRIETARY INFORMATION. NO REPRODUCTION OR OTHER FORM REUSE IS PERMITTED WITHOUT THE EXPRESS WRITTEN APPROVAL OF REGAL BELOIT AMERICA, INC. (OWNER). THIS DOCUMENT SHALL BE RETURNED TO OWNER UPON REQUEST. IT MAY BE SUBJECT TO EXPORT RESTRICTIONS UNDER APPLICABLE EXPORT CONTROL LAWS AND REGULATIONS.				DATE 12-23-2014	
				PROCESS/FINISH	SIZE [DWG NO.] D [H046LES]
				THIRD ANGLE PROJECTION	SHEET 1