

GENERAL INFORMATION:

SHAFT RUNOUT: .001 [.03] T.I.R. PER INCH LENGTH OF EXTENSION

BEARINGS: BALL

MOUNTING POSITION: ALL ANGLE

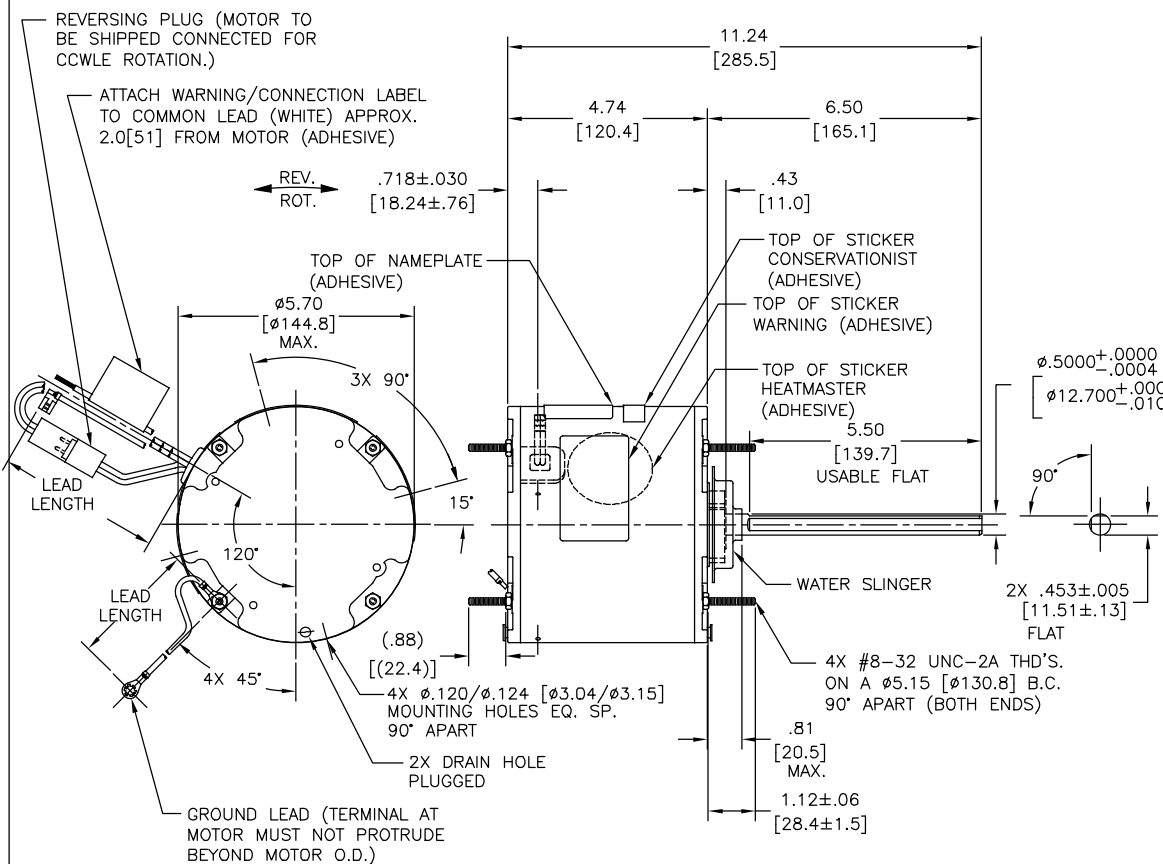
ELECTRICAL DATA:

OVERLOAD PROTECTOR: AUTOMATIC RESET (T.I. 7AM 304)

LINE LEADS: NO. 18 GA., .06 [1.5] THK. XLP 125°C INSUL.

REVERSING PLUGS: NO. 18 GA., .03 [.8] THK. XLP 125°C INSUL.

GROUND LEAD: NO. 18 GA., .03 [.8] THK. (GREEN) INSUL.



| NAMEPLATE DATA: | EXTERNAL CONNECTION DIAGRAM |
|--|---|
| MODEL NO.: F48AF29A01 CUST. P/N: FEH1026SU HP: 1/4 ROT.: REVERSIBLE RPM: 1075 TYPE: UF FRAME: 48 VOLTS: 460 PH: 1 AMPS: 0.9 HZ: 60 INS.: F AMB.: 80°C DUTY: AIR OVER CAP.: 7.5 MFD/370 V ENCL: ENCLOSED UL LOGO CSA LOGO THERMALLY PROTECTED | <p>SEP. CAP.</p> <p>BROWN</p> <p>BRN/WHT</p> <p>WHITE</p> <p>BLACK</p> <p>LINE</p> <p>ROTATION</p> <p>BLACK BLACK</p> <p>WHITE WHITE</p> <p>BLACK CCWLE WHITE</p> <p>WHITE CWLE BLACK</p> <p>614131-242</p> |

| PERFORMANCE CURVE NO. | TORQUE @ 1075 RPM (25°C) | APPROVED SAMPLE | UL COMPONENT FILE # | CCN # | CSA FILE # | CLASS # |
|-----------------------|--------------------------|-----------------|---------------------|-------|------------|---------|
| C32582 | 28.8 OZ. FT. | | E46412 | PRGY2 | LR43341 | 4211-01 |

| COLOR | LENGTH | TERMINAL OR STRIP LENGTH |
|----------------|-----------------------|--------------------------|
| GREEN (GROUND) | 12.0/13.0 [305/330] | #10 EYELET |
| BLACK/WHITE | 3.0/5.0 [76/127] | REVERSING PLUG |
| BROWN | 48.0/51.0 [1219/1295] | .25 [6.4] FLAG |
| BROWN/WHITE | 48.0/51.0 [1219/1295] | .25 [6.4] FLAG |
| WHITE | 48.0/51.0 [1219/1295] | .50 [12.7] SKIN |
| BLACK | 48.0/51.0 [1219/1295] | .50 [12.7] SKIN |

REGAL-BELOIT CORPORATION (RBC) PROVIDES TECHNICAL ASSISTANCE TO OUR CUSTOMERS IN SEVERAL AREAS. SINCE RBC DOES NOT RECEIVE ALL DATA CONCERNING THE USE AND APPLICATION OF THE MOTOR, THE SUITABILITY OF THE MOTOR FOR THE APPLICATION MUST BE DETERMINED BY THE CUSTOMER.

DIMENSIONS WITHOUT TOLERANCES ARE FOR REFERENCE ONLY.

| | |
|------------------|----------|
| MAIN FRAME - OLE | ENCLOSED |
| END FRAME - OLE | ENCLOSED |
| MAIN FRAME - LE | ENCLOSED |
| END FRAME - LE | ENCLOSED |

- NOTES:
- ATTACH INSTRUCTION SHEET 69P9-3 ONTO SHAFT APPROX. 1.0[25] FROM WATER SLINGER
 - 4X SCREWS 6159B2-001 & 4X HEX NUTS 7555A19H01 & 4X SCREWS 13833003 TO BE PUT IN A POLYBAG.

| DRAWING REVISION | REVISION BY | DATE |
|------------------|-------------|------------|
| D | GELINE ZHAO | 05-23-2019 |
| ECO | KEYUN QONG | 05-23-2019 |

LEAD DATA

ENCLOSURE

DRAWN BY: N.HONG
DATE: 01-18-2013
APPROVED BY: D.ZHANG
DATE: 01-18-2013
PROCESS/FINISH

THIRD ANGLE PROJECTION

REGAL-BELOIT CORPORATION (RBC) PROVIDES TECHNICAL ASSISTANCE TO OUR CUSTOMERS IN SEVERAL AREAS. SINCE RBC DOES NOT RECEIVE ALL DATA CONCERNING THE USE AND APPLICATION OF THE MOTOR, THE SUITABILITY OF THE MOTOR FOR THE APPLICATION MUST BE DETERMINED BY THE CUSTOMER.

REGAL BELOIT America, Inc.

MODEL-RFHP-48FR OUTLINE

MATERIAL

SIZE DWG NO: C FEH1026SU

SHEET 1