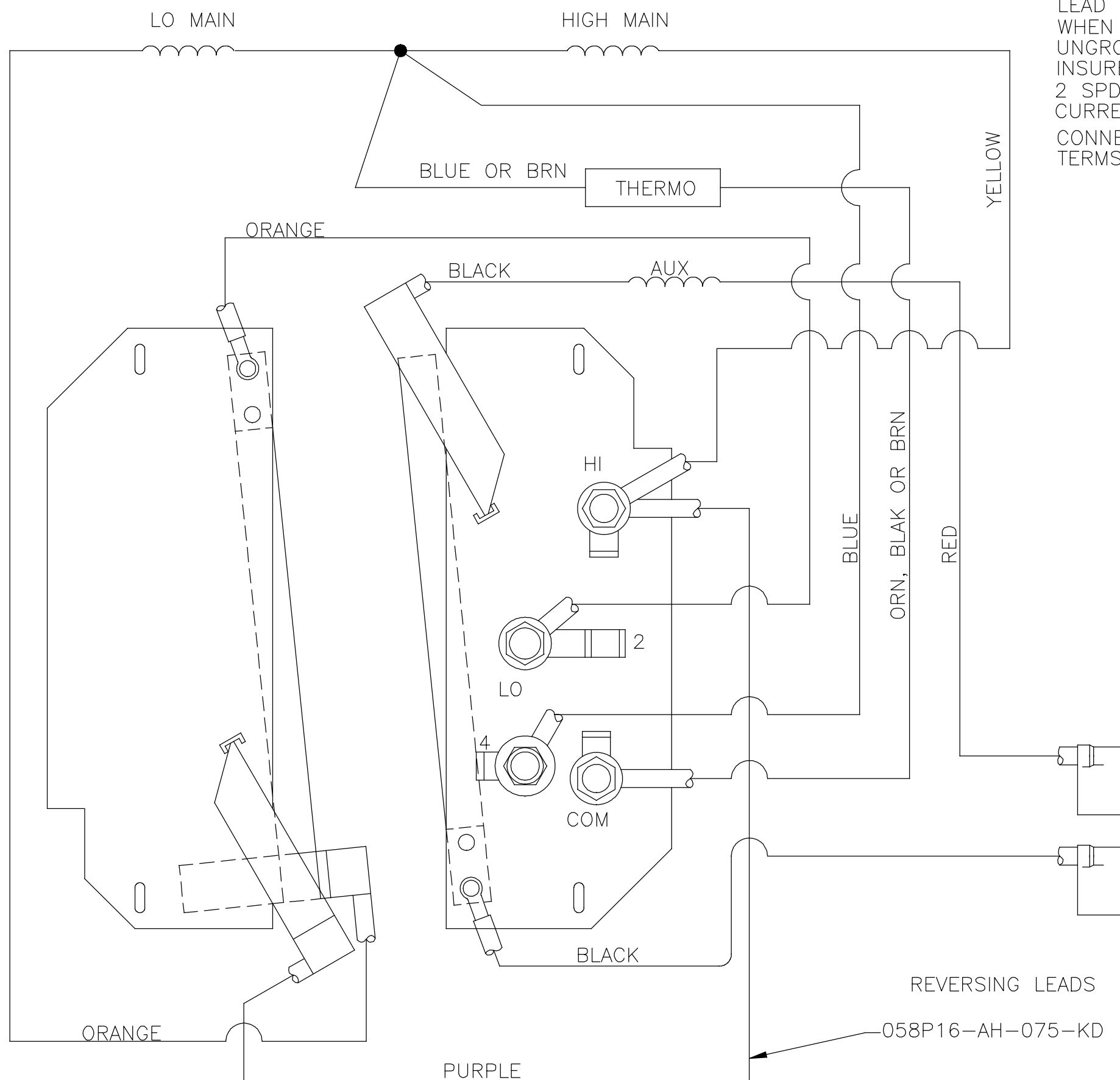
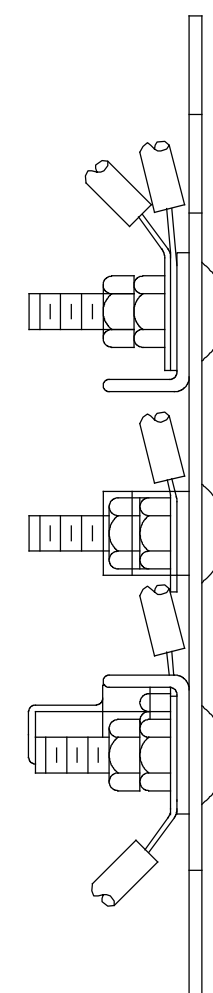


REV	ECO	REV BY	DATE	APPD	DATE
E	ECO-0179077	D.SURYAWANSHI	12/19/2019		



LEAD LOCATION SHOULD BE ESSENTIALLY AS SHOWN WHEN GROUNDED POWER SUPPLY IS USED, CONNECT UNGROUNDED SUPPLY LINE TO COMM. TERMINAL TO INSURE MAX. THERMOGUARD PROTECTION.
 2 SPD.-SINGLE VOLTAGE,REVERSABLE-THERMO,MIN. CURRENT PER CONTACT
 CONNECT REVERSING LEADS TO TERMS' MARKED BY ARROWS



	CONNECT LINE AS FOLLOWS
HIGH SPEED	TERMINAL HI & COM
LOW SPEED	TERMINAL LO & COM

-001A	CCW	BLACK → 2	93GR
		RED → 4	0686
-002B	CW	RED → 2	
		BLACK → 4	

GEOMETRIC CHARACTERISTICS & SYMBOLS
 ▽ FLATNESS
 — STRAIGHTNESS
 ∠ ANGULARITY
 ⊥ PERPENDICULARITY (SQUARENESS)
 // PARALLELISM
 ○ ROUNDNESS (CIRCULARITY)
 ⊘ CYLINDRICITY
 △ PROFILE OF ANY SURFACE
 ∩ PROFILE OF ANY LINE
 ↑ RUNOUT
 ⊕ TRUE POSITION
 ⊙ CONCENTRICITY
 = SYMMETRY

UNLESS OTHERWISE SPECIFIED DIM. TOLERANCES ARE AS FOLLOWS:
 INCH X XX XXX XXXX
 INCH ±.1 ±.02 ±.005 ±.0005
 mm ±0.5 ±0.13 ±0.13
 ANG. ±.50 DEG
 REMOVE BURRS & BREAK SHARP EDGES:
 INCH .003-.015 mm 0.1-0.4
 CORNER FILLETS TO:
 INCH .020 mm 0.5
 MACHINE SURFACES:
 INCH 125 mm 3.2
 METRIC DIMS. SHOWN IN [BRACKETS]

DR BY: SHANKS
 APPD:
 01-26-1994
 EDS DATE 02-22-2008
 FORMAT REV F
 THIRD ANGLE PROJECTION
 CONFIDENTIAL: THIS DRAWING AND ITS INFORMATION ARE THE EXCLUSIVE AND CONFIDENTIAL PROPERTY OF A.O. SMITH CORP. AND ARE NOT TO BE DISCLOSED, DUPLICATED, DISTRIBUTED OR OTHERWISE USED WITHOUT THE WRITTEN CONSENT OF A.O. SMITH CORP.
 -ALL RIGHTS RESERVED. ASME Y14.5M 1994

AO Smith **ELECTRICAL PRODUCTS COMPANY**
 Innovation has a name. A DIVISION OF A. O. SMITH CORPORATION

DESCRIPTION: EXTERNAL-PART-GROUP
 SIZE: C DWG NO: 618191-001
 SCALE: NONE SHEET: 1