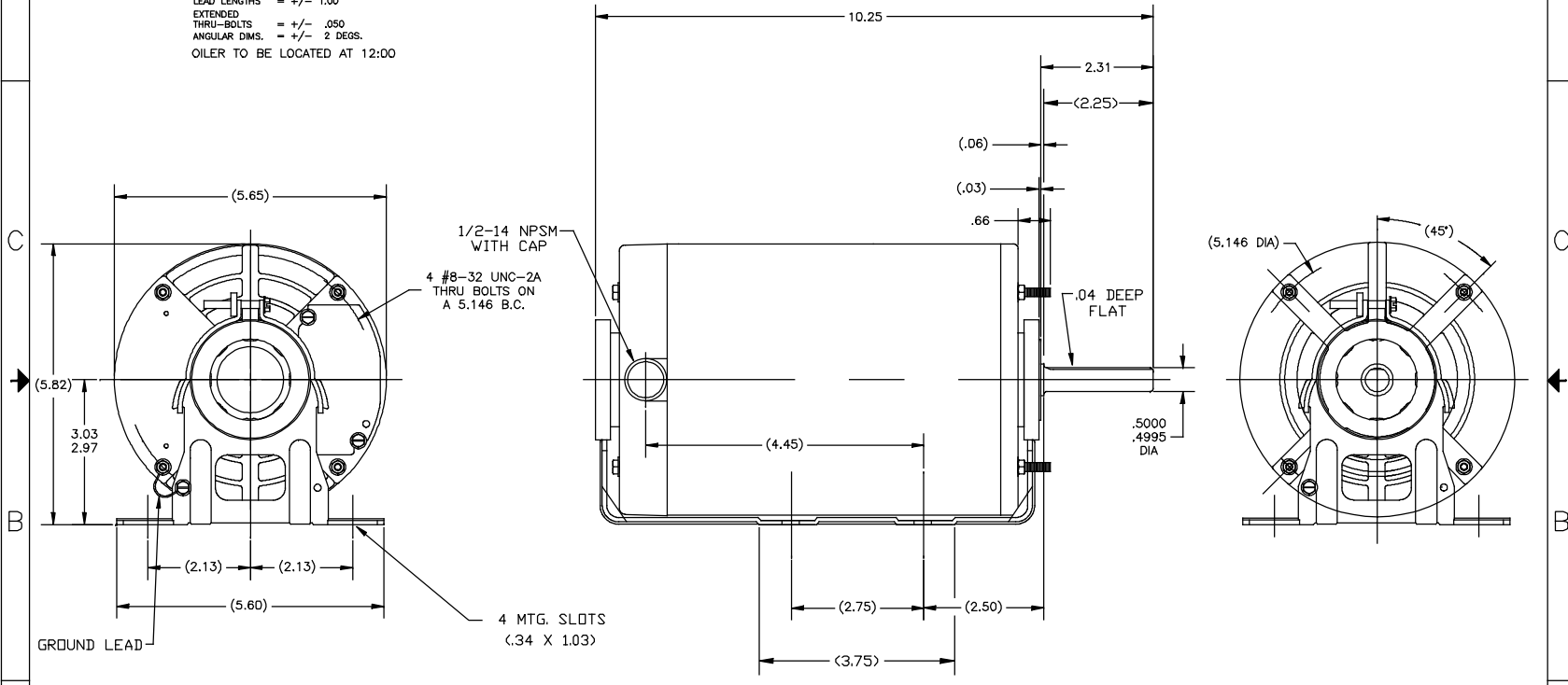


REV	DATE	PROJECT	DESCRIPTION
B	09/05/2019	ECD-0173013	ADDED SHAFT END VIEW
			REV BY APPD
			D.SURJYAWANSHI

ALL DIMENSIONS SHOWN IN PARENTHESIS ARE REFERENCE DIMENSIONS. ALL OTHER DIMENSIONS ARE TOLERANCED PER THE FOLLOWING CHART UNLESS OTHERWISE SPECIFIED.

"C" DIM. = +/- .055  
 SHAFT EXT. = +/- .03+  
 LEAD LENGTHS = +/- 1.00  
 EXTENDED THRU-BOLTS = +/- .050  
 ANGULAR DIMS. = +/- 2 DEGS.  
 OILER TO BE LOCATED AT 12:00



MODEL	PERFORMANCE CURVE #
F344V1	C26080

C-CODE:	UNLESS OTHERWISE SPECIFIED	DR BY:	JBLANK	9/13/2004	Regal Beloit America, Inc.
CLASS:	DIN ARE IN INCHES	CK BY:			
	1 = 2.1	APPD:			TITLE
	XX = 2.82	ISS:			0048 DWG O-LINE BB DP/EN
	XXX = 2.805				SIZE
	XXXX = 2.8005				C DWG NO
	ANG = 2.5				18884401-001
AUTOCAD FORM 3 UNLESS OTHERWISE SPECIFIED DR BY: JBLANK 9/13/2004 CK BY: APPD: ISS: THIRD ANGLE PROJECTION					SCALE SHEET 1 OF 1
CONFIDENTIAL/THIS DRAWING AND ITS INFORMATION ARE THE EXCLUSIVE AND CONFIDENTIAL PROPERTY OF A.D. SMITH CORP. AND ARE NOT TO BE DISCLOSED, REPRODUCED, COPIED, OR OTHERWISE USED WITHOUT THE WRITTEN CONSENT OF A.D. SMITH CORP. -ALL RIGHTS RESERVED.					REV B