

4

3

2

1

GENERAL INFORMATION:

SHAFT RUNOUT: .001[.03] T.I.R. PER INCH LENGTH OF EXTENSION

END PLAY: .010[.25] TO .063[1.60]

BEARINGS: SLEEVE

MOUNTING POSITION: HORIZONTAL

ELECTRICAL DATA:

OVERLOAD PROTECTOR: AUTOMATIC RESET (T.I. 7AM 034)

LEADS: NO. 18 GA., .03[.8] THK., 125°C INSULATION

GROUND LEAD: NO. 18 GA., .03[.8] THK., GREEN INSULATION

NAMEPLATE DATA:

MODEL NO.: F42A14A01
CUST. P/N: DB4505
HP: 1/5
ROT.: CCWLE
RPM: 1500-3 SPD
TYPE: FLL
FRAME: 42Y
VOLTS: 230
PH: 1
AMPS: 1.5
HZ: 60
INS.: A
AMB.: 40° C
DUTY: AIR COVER
CAP.: 5 MFD-370V
ENCL:
UL LOGO
CSA LOGO
THERMALLY PROTECTED TYPE C

EXTERNAL CONNECTION DIAGRAM

RED

BLU

BLK

PUR

BRN

BRN

LO

MED

HI

LINE

PERFORMANCE CURVE NO.

TORQUE @1075 RPM (25°C)

APPROVED SAMPLE

UL COMPONENT

CSA

669335

11.0 OZ. FT.

PSB 7313

E46412 PRGY2

LR43341 4211-01

GEOMETRIC CHARACTERISTICS & SYMBOLS

— FLATNESS

— STRAIGHTNESS

— ANGULARITY

— PERPENDICULARITY (SQUARENESS)

// PARALLELISM

○ ROUNDNESS (CIRCULARITY)

∅ CYLINDRICITY

△ PROFILE OF ANY SURFACE

— PROFILE OF ANY LINE

↑ RUNOUT

⊕ TRUE POSITION

◎ CONCENTRICITY

≡ SYMMETRY

ASME Y14.5M 1994

REGAL-BELOIT CORPORATION (RBC) PROVIDES TECHNICAL ASSISTANCE TO OUR CUSTOMERS IN SEVERAL AREAS. SINCE RBC DOES NOT RECEIVE ALL DATA CONCERNING THE USE AND APPLICATION OF THE MOTOR, THE SUITABILITY OF THE MOTOR FOR THE APPLICATION MUST BE DETERMINED BY THE CUSTOMER.

DIMENSIONS WITHOUT TOLERANCES ARE FOR REFERENCE ONLY.

REV

ECO

REV BY

DATE

APPD

DATE

D

0026394

H.ZHOU

05-29-2012

B.SHEN

05-29-2012

CCW

ROT.

LEAD LENGTH

LEAD LENGTH

3.50^{+0.00}_{-.06}

88.9⁺⁰_{1.5}

.09 [2.4]

2X BEARING MARKER

"TOP" IDENTIFIED

2X LANCED OILERS

22.00 [558.8]

4.11 [104.4]

9.31 [236.5]

9.32 [236.7]

3.37 [85.6]

7.90 [200.7]

7.90 [200.7]

TOP OF NAMEPLATE

TOP OF STICKER WARNING. WHEN REQUIRED

USABLE FLAT

USABLE FLAT

2X

∅.4998^{+0.0000}_{-.0005}

∅12.695^{+0.000}_{-.013}

2X

.453±.005 [11.51±.13] FLAT

LOCATE BASE HOLE MARKER ON THIS END

∅4.88 [∅123.9]

4.22 [107.2]

1.69 [42.9]

(1.83) [(46.5)]

3.50 [88.9]

5.00 [127.0]

4X

.3[8] X 1.0[25] SLOT

GREEN (GRD)

CONNECTED TO BASE

#8 EYELET

BROWN

23.0/25.0 [584/635]

.25[6.4] FEMALE SPADE

BROWN

23.0/25.0 [584/635]

.25[6.4] FEMALE SPADE

RED

38.5/41.5 [978/1054]

.25[6.4] FEMALE SPADE

BLUE

38.5/41.5 [978/1054]

.25[6.4] FEMALE SPADE

BLACK

38.5/41.5 [978/1054]

.25[6.4] FEMALE SPADE

PURPLE

38.5/41.5 [978/1054]

.25[6.4] FEMALE SPADE

COLOR

LENGTH

TERMINAL OR STRIP LENGTH

MAIN FRAME - OLE

OPEN

END FRAME - OLE

OPEN

MAIN FRAME - LE

OPEN

END FRAME - LE

OPEN

CUSTOMER

DISTRIBUTION SERVICE

ENCLOSURE

CUSTOMER

DISTRIBUTION SERVICE

REGAL

REGAL-BELOIT CORPORATION

DESCRIPTION

OUTLINE

SIZE

C

DWG NO

11927-020

SCALE

NONE

SHEET

1

4

3

2

1

A

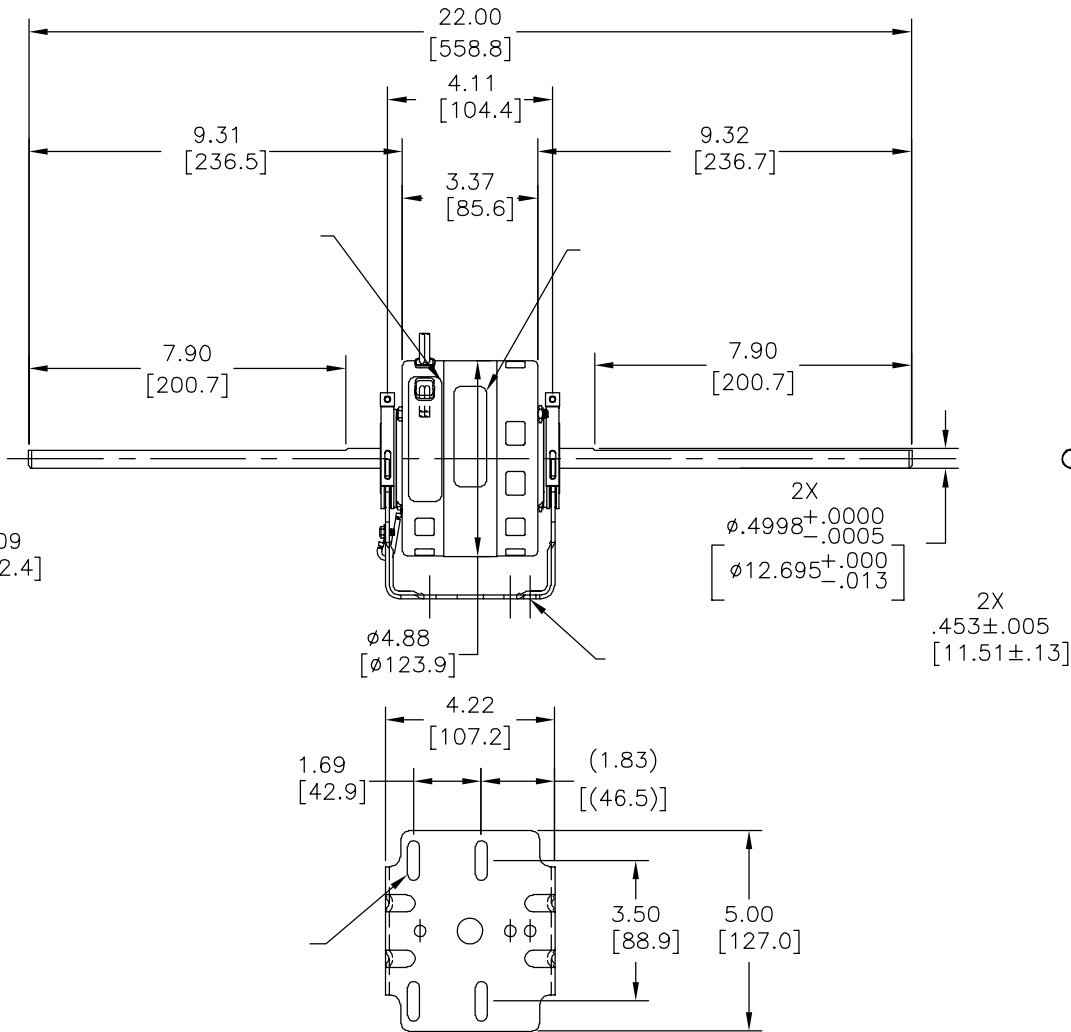
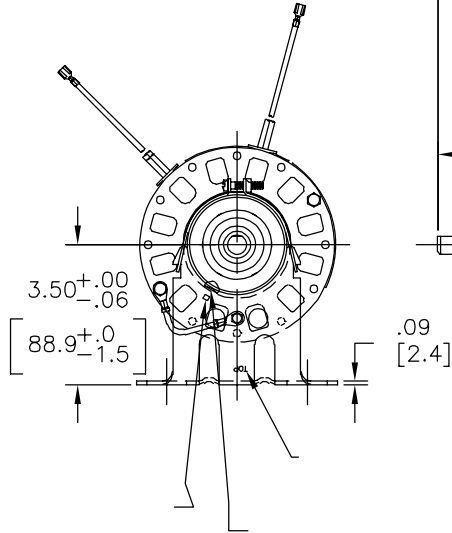
B

C

D

CABLE DE TIERRA: —

ROT.



A REGIÓN DEL RECORPORACIÓN (RRC).
OTRO PROVEER ASISTENCIA TÉCNICA A
LAS DIMENSIONES INDICADAS EN
NUESTROS CLIENTES EN VARIAS ÁREAS
DESDE QUE RRC NO CUBRE LOS
LOS DATOS EN RELACION AL USO Y
ANGULARIZACIÓN DEL MOTOR, LA
ELIMINACIÓN ADECUADA DEL MOTOR
DEL MOTOR.
DEBE SER DETERMINADA POR EL
PULG. 0653 - CLASIFICACIÓN 0.1-0.4
FILETAR ESQUINA DIMS 0.20 mm 0.5
MAQUINAR SUPERFICIES
DIMENSIONES SIN TOLERANCIA SON
DE REFERENCIA SOLAMENTE
DIMS METRICAS MOSTRADAS (PARENTESIS

CLIENTE	DISTRIBUTION SERVICE
---------	-------------------------

CORPORATION. —TODOS LOS DERECHOS

ESCALA:NONE

ESCALA: NONE	HOJA: 1
--------------	---------

OUTLINE

Uncontrolled Copy

[illegible]