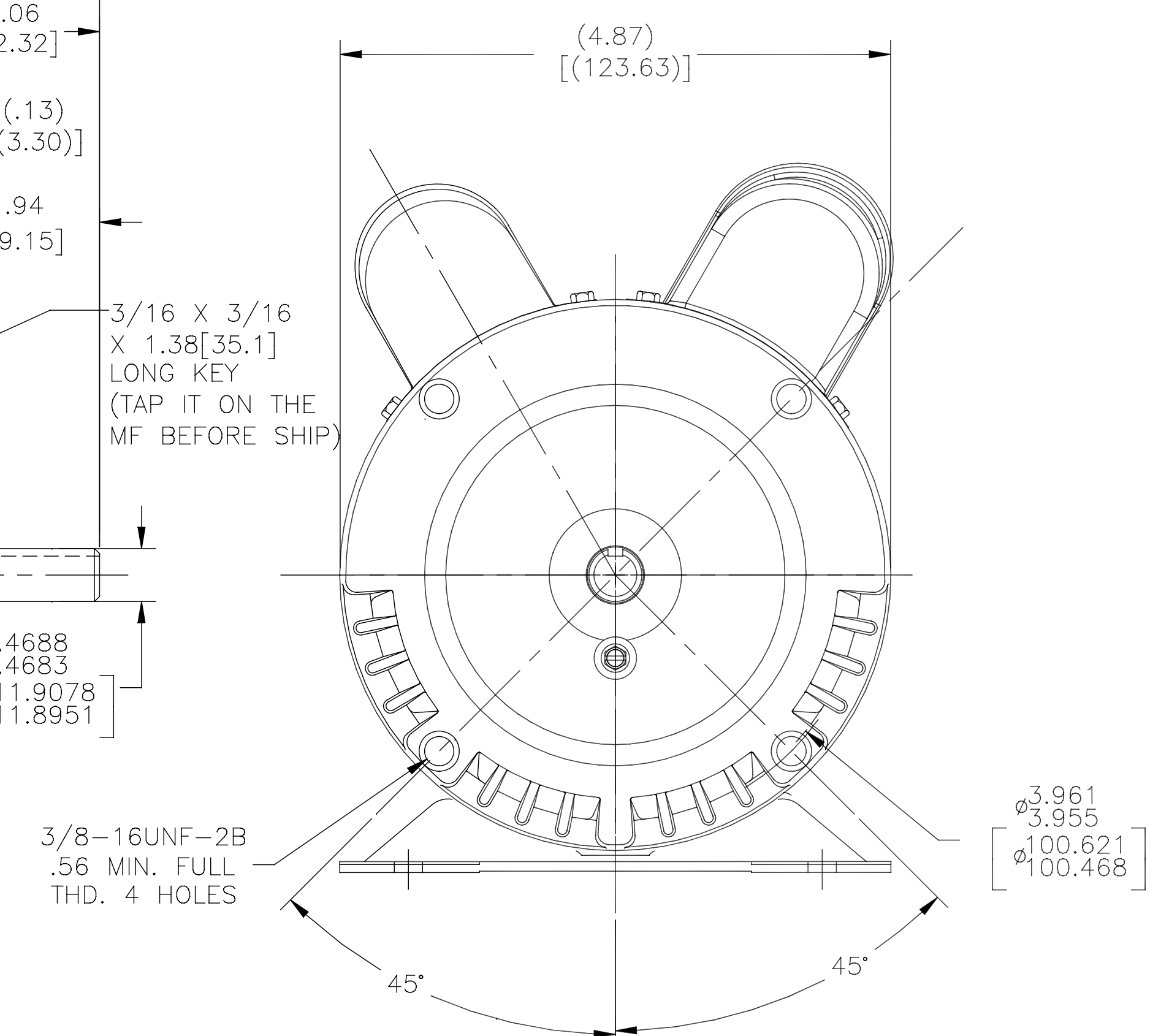
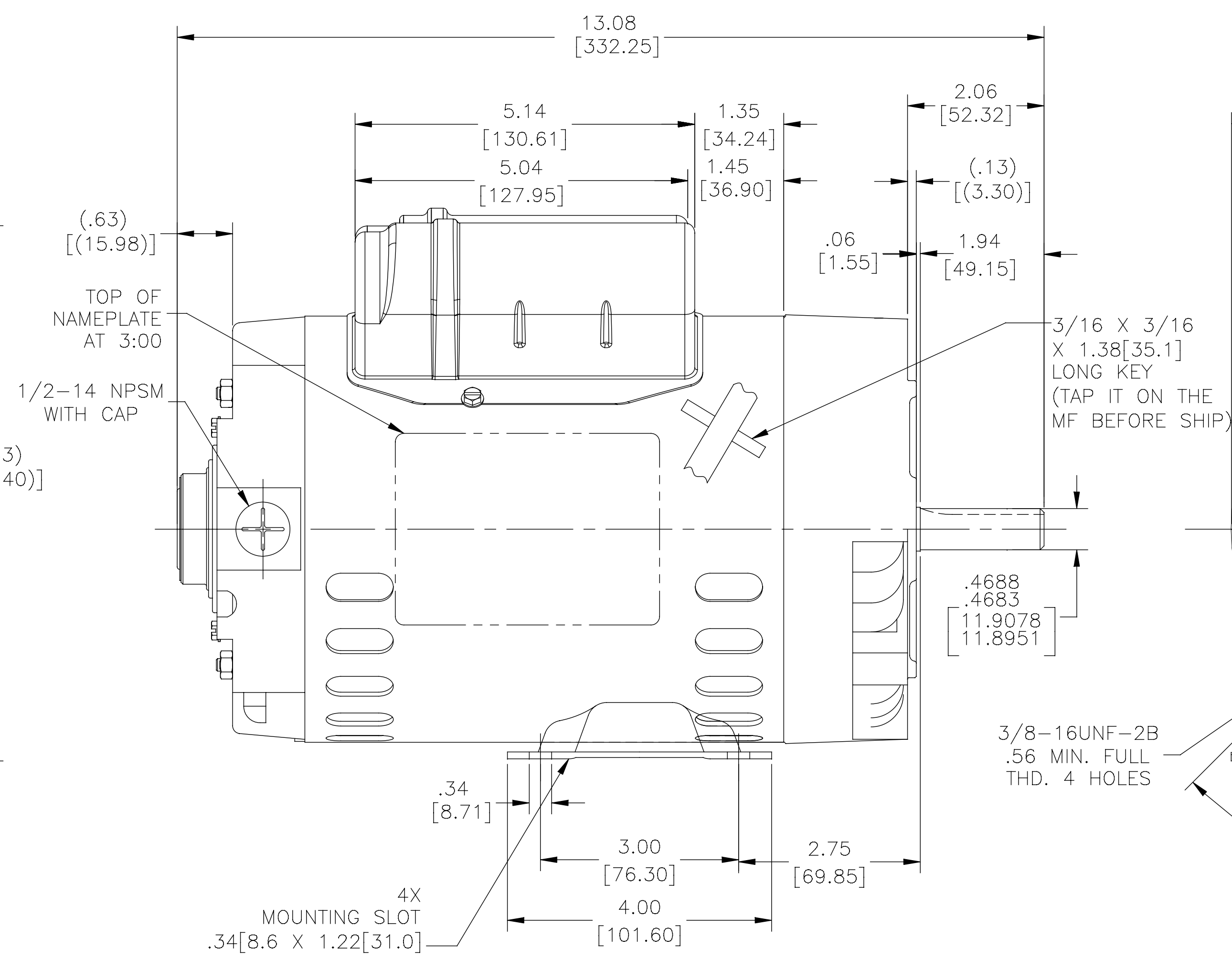
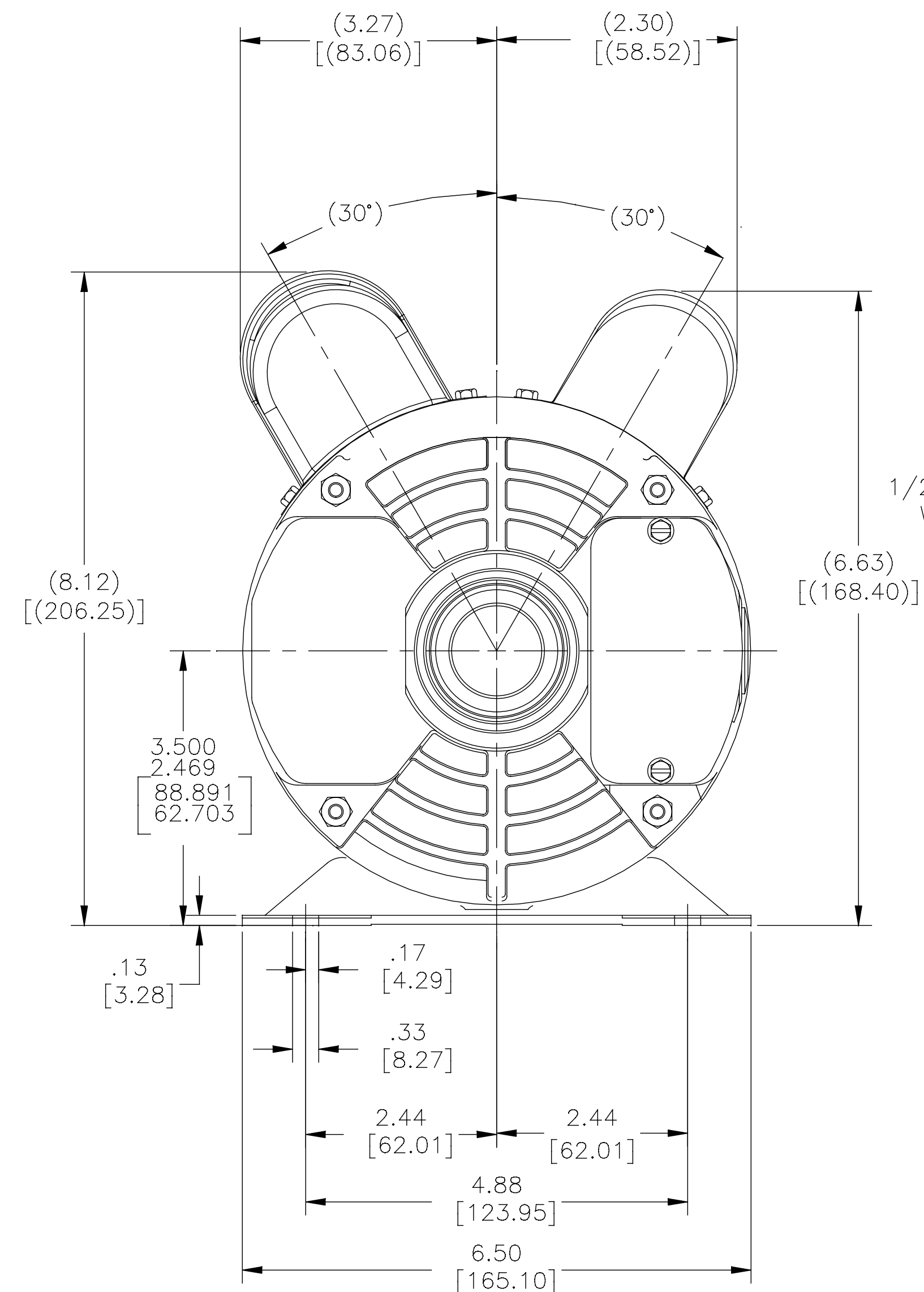


NOTES:  
 1. ALL DIMENSIONS SHOWN IN PARENTHESIS ARE REFERENCE DIMENSIONS. ALL OTHER DIMENSIONS ARE TOLERANCED PER THE FOLLOWING CHART UNLESS OTHERWISE SPECIFIED.

"OVERALL" DIMENSION = ±.055[1.397]  
 SHAFT EXTENSION = ±.034[.864]  
 LEAD LENGTHS = ±1.00[25.40]  
 EXTENDED THRU-BOLTS = ±.050[1.270]  
 ANGULAR DIMENSIONS = ±2°



DRAWING REVISION B	REVISION BY Y.LIU	DATE 06-25-2015	TOLERANCES UNLESS OTHERWISE SPECIFIED DEC INCH mm ANGLE X ±0.1 [±2.5] ±0.5° XX ±0.02 [±0.51] XXX ±0.005 [±0.127] XXXX ±0.0005 [±0.0127]	DRAWN BY Y.LIU	DATE 10-13-2014	<b>Regal Beloit America, Inc.</b> DESCRIPTION MODEL-PFHP-56FR OUTLINE MATERIAL PROCESS/FINISH SIZE (DWG NO) C530ES SHEET 1
ECO-0079651	APPROVED BY H.ZHANG	DATE 06-25-2015	REMOVE BURRS & BREAK SHARP EDGES .003/0.15 [0.076/3.81] CORNER FILLETS .02 [51] MACHINED SURFACES .125 [3.175] mm SHOWN IN [BRACKETS]	APPROVED BY B.SIEN	DATE 10-13-2014	