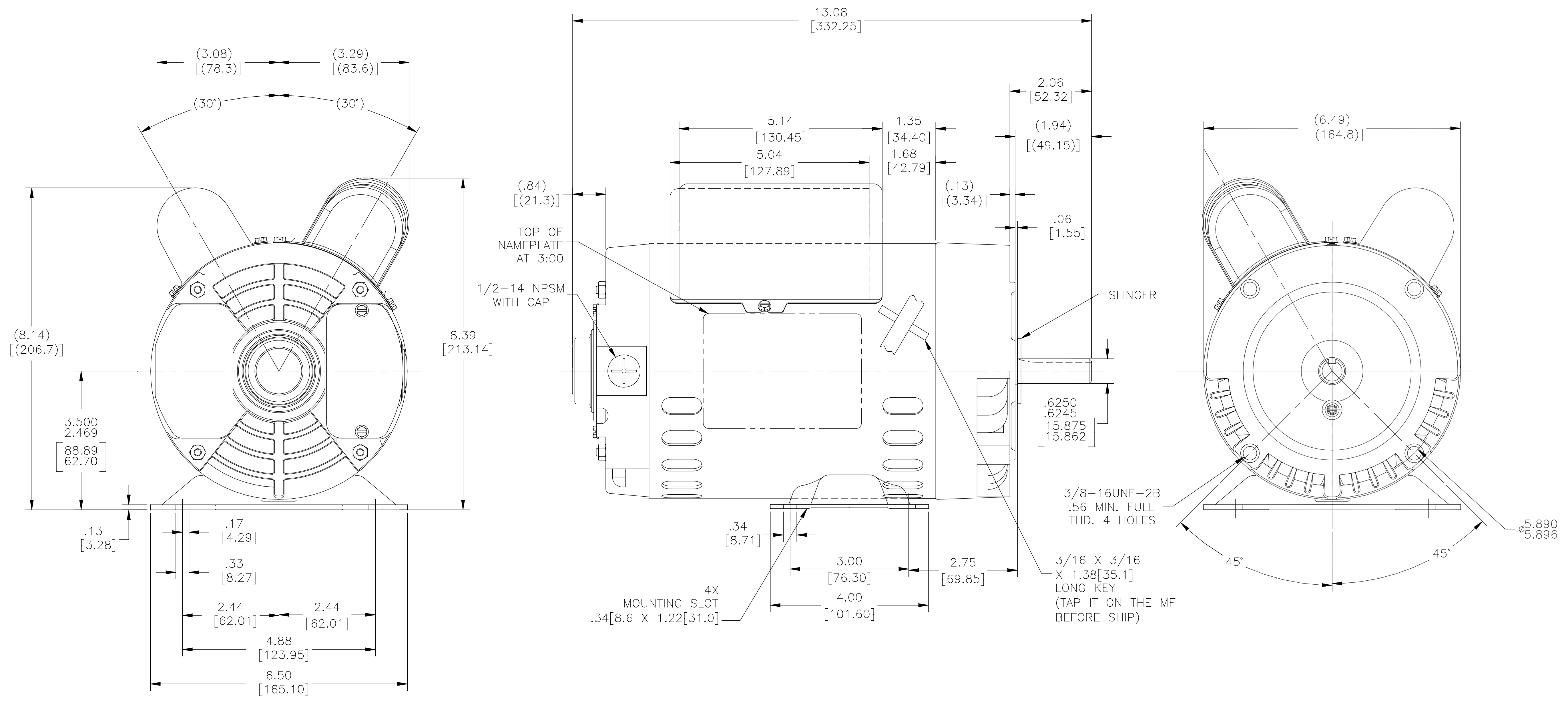


ALL DIMENSIONS SHOWN IN PARENTHESIS ARE REFERENCE DIMENSIONS. ALL OTHER DIMENSIONS ARE TOLERANCED PER THE FOLLOWING CHART UNLESS OTHERWISE SPECIFIED.

"OVERALL" DIMENSION = ±.055[1.40]
 SHAFT EXTENSION = ±.034[.86]
 LEAD LENGTHS = ±1.00[25.4]
 EXTENDED THRU-BOLTS = ±.050[1.27]
 ANGULAR DIMENSIONS = ±2°



DRAWING REVISION	REVISION BY	DATE	TOLERANCES UNLESS OTHERWISE SPECIFIED	DRAWN BY:	Regal Beloit America, Inc.
B	X.JAN	06-24-2015	DEC: INCH mm ANGLE	Y.LIU	
ECO	APPROVED BY	DATE	.X ±0.1 [±2.5]	DATE:	10-23-2014
ECO-0079651	H.ZHANG	06-24-2015	.XX ±0.02 [±0.51]	APPROVED BY:	B.SHEN
ECO DESCRIPTION			.XXX ±0.005 [±0.127]	DATE:	10-23-2014
SFE ECO			.XXXX ±0.0005 [±0.0127]	REFERENCE	
<small>COPYRIGHT REGAL BELOIT AMERICA, INC. ALL RIGHTS RESERVED. REGAL BELOIT AMERICA, INC. (PARENT) AND COMPANY OWNERS PROPRIETARY INFORMATION. NO REPRODUCTION OR OTHER USE IS PERMITTED WITHOUT THE EXPRESS WRITTEN APPROVAL OF REGAL BELOIT AMERICA, INC. THIS DOCUMENT SHALL BE RETURNED TO OWNER UPON REQUEST. IT MAY BE SUBJECT TO EXPORT RESTRICTIONS UNDER APPLICABLE EXPORT CONTROL LAWS AND REGULATIONS.</small>			REMOVE BURRS & BREAK SHARP EDGES .003/0.015 [0.076/.381] CORNER FILLETS .02 [51] MACHINED SURFACES .125 INCH V. mm 32/	MATERIAL: - PROCESS/FINISH: - SIZE (DWG NO): C446ES SHEET: 1	