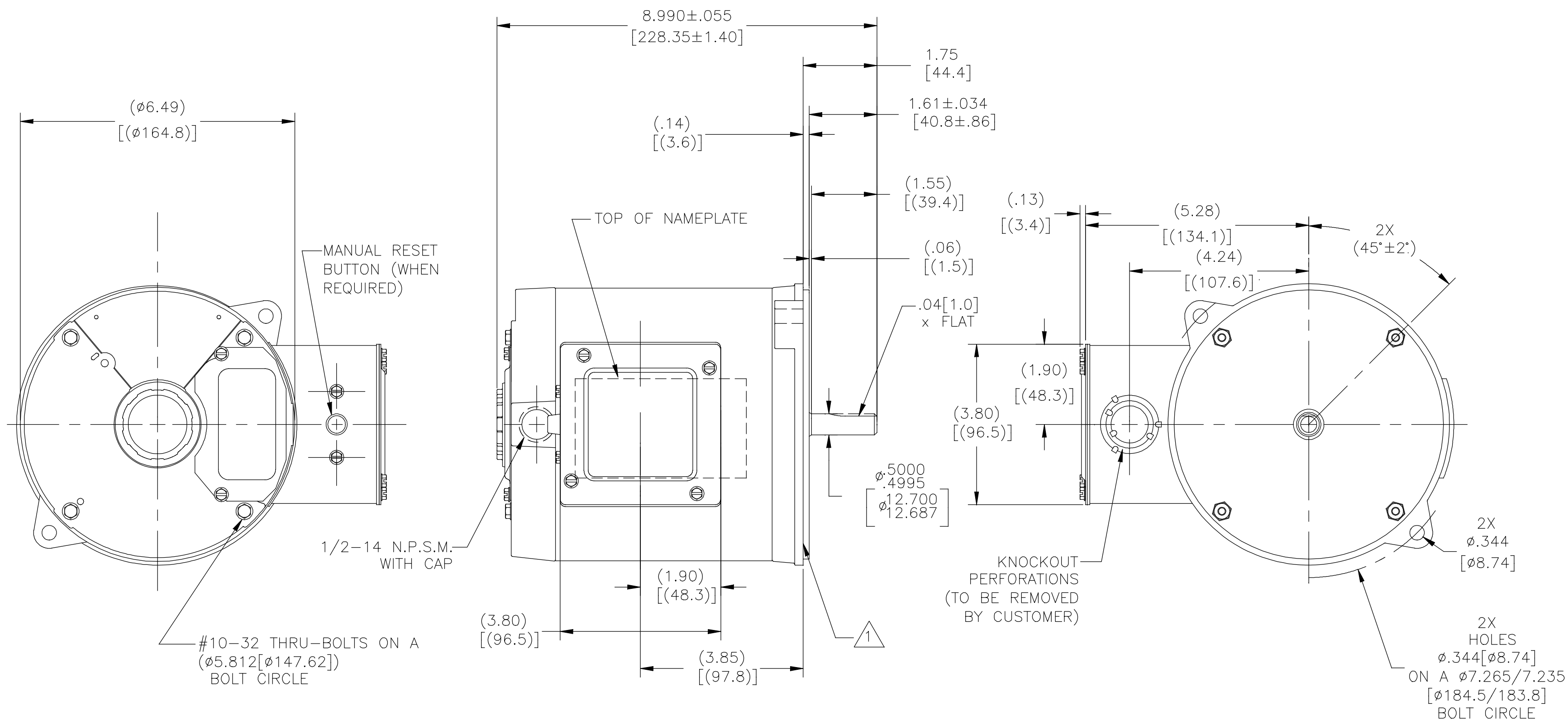


REV	ECO	REV BY	DATE	APPD	DATE
C	ECO-0169531	D.SURYAWANSHI	06/26/2019		



NOTES:

1. FACE OF MOUNTING FLANGE IS PERPENDICULAR TO SHAFT CENTERLINE WITHIN $.004$ [.10] T.I.R.

2. SHAFT RUNOUT NOT TO EXCEED $.002$ [.05] T.I.R.

ALL DIMENSIONS SHOWN IN PARENTHESIS ARE REFERENCE DIMENSIONS.

<p>GEOMETRIC CHARACTERISTICS & SYMBOLS</p> <ul style="list-style-type: none"> — FLATNESS — STRAIGHTNESS ∠ ANGULARITY ⊥ PERPENDICULARITY (SQUARENESS) // PARALLELISM ○ ROUNDNESS (CIRCULARITY) ⊘ CYLINDRICITY △ PROFILE OF ANY SURFACE ⌒ PROFILE OF ANY LINE ↑ RUNOUT ⊕ TRUE POSITION ⊙ CONCENTRICITY = SYMMETRY <p>ASME Y14.5M 1994</p>
--

<p>UNLESS OTHERWISE SPECIFIED DIM. TOLERANCES ARE AS FOLLOWS:</p> <p>INCH X XX XXX XXXX $\pm .1 \pm .02 \pm .005 \pm .0005$ mm $\pm 0.5 \pm 0.13 \pm 0.013$</p> <p>ANG. $\pm .50$ DEG</p> <p>REMOVE BURRS & BREAK SHARP EDGES: INCH $.003-.015$ mm $0.1-0.4$</p> <p>CORNER FILLETS TO: INCH $.020$ mm 0.5</p> <p>MACHINE SURFACES: INCH $\sqrt{32}$ mm $\sqrt{3.2}$</p> <p>METRIC DIMS. SHOWN IN [BRACKETS]</p>

DR BY:	T.ZHAO	12-26-2011
APPD:	M.HE	12-26-2011
THIRD ANGLE PROJECTION	EDS DATE 11-11-2011	FORMAT REV H
<p>CONFIDENTIAL: THIS DRAWING AND ITS INFORMATION ARE THE EXCLUSIVE AND CONFIDENTIAL PROPERTY OF REGAL-BELOIT CORPORATION AND ARE NOT TO BE DISCLOSED, DUPLICATED, DISTRIBUTED OR OTHERWISE USED WITHOUT THE WRITTEN CONSENT OF REGAL-BELOIT CORPORATION. -ALL RIGHTS RESERVED.</p>		

<p>REGAL REGAL-BELOIT CORPORATION</p>	
<p>DESCRIPTION MODEL-PFHP-56FR OUTLINE</p>	
SIZE C	DWG NO C345
SCALE NONE	SHEET 1