

GENERAL INFORMATION:

SHAFT RUNOUT: .001[.025] T.I.R. PER INCH LENGTH OF EXTENSION

BEARINGS: 203 BALL

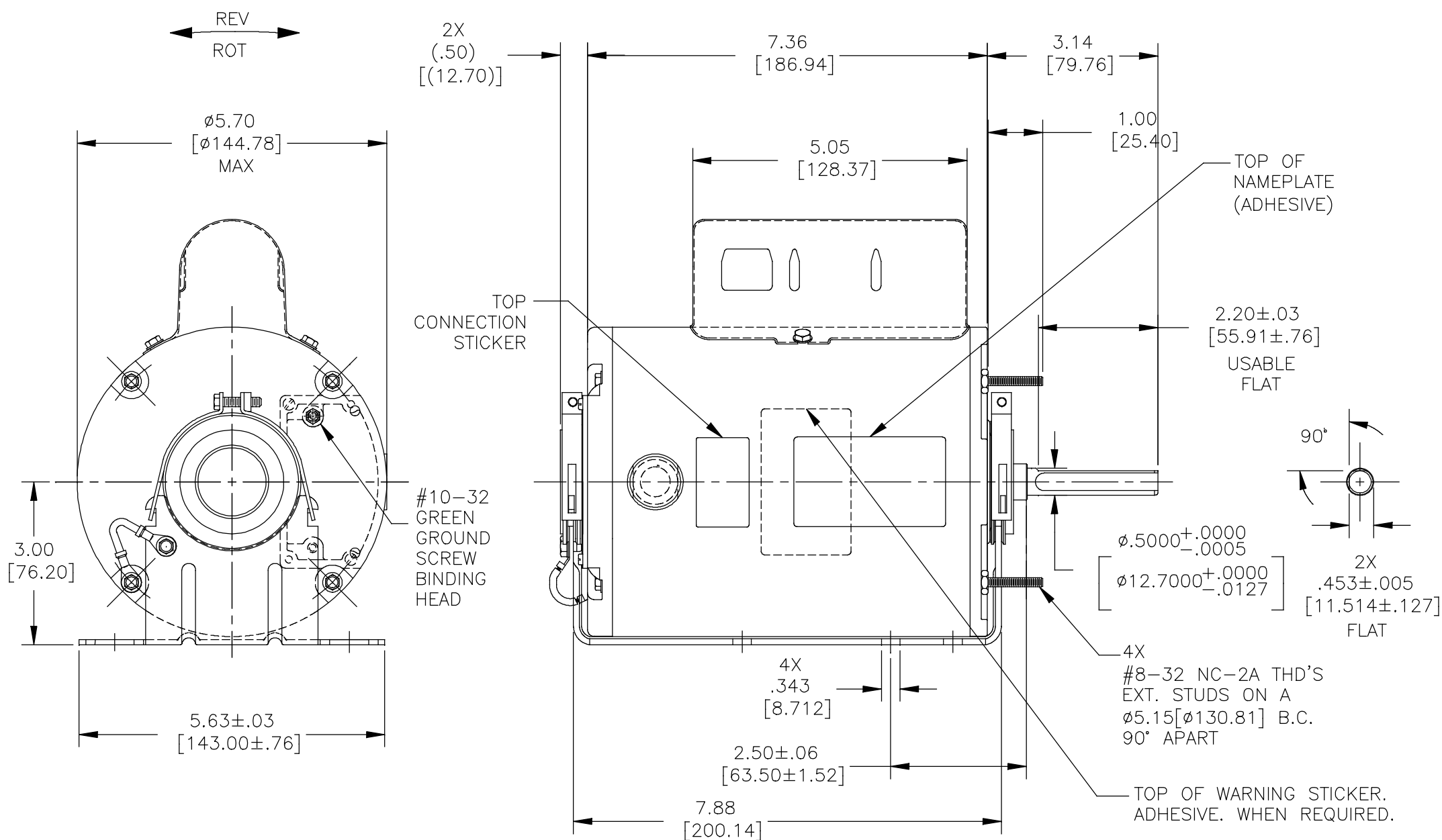
MOUNTING POSITION: ALL ANGLE

ELECTRICAL DATA:

OVERLOAD PROTECTOR: AUTOMATIC RESET (SENSATA 7AM 036)

LEADS: NO. 18 GA., .03[.76] THK. XLP 125°C INSUL.

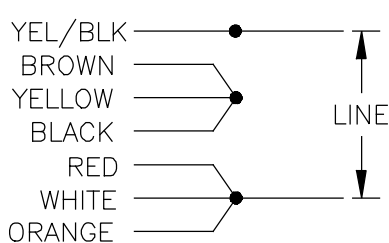
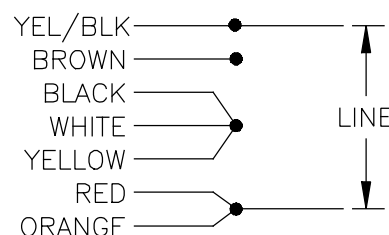
GROUND LEAD: NO. 18 GA., .03[.76] THK. GRN/YEL. INSUL.



NAMEPLATE DATA:

EXTERNAL CONNECTION DIAGRAM

MODEL NO.: F48Y95A01
 CUST. P/N: C044A
 HP: 1/2
 ROT.: REV
 RPM: 1700
 TYPE: UF
 FRAME: 48Z
 VOLTS: 115/230
 PH: 1
 AMPS: 5.5/2.8
 HZ: 60
 INS.: B
 AMB.: 40°C
 DUTY: AIR OVER
 CAP.: 25 MFD/370 V
 ENCL: ENCLOSED
 UL LOGO
 CSA LOGO
 THERMALLY PROTECTED



MOTOR CONNECTED FOR CCWLE ROTATION & 115V TO REVERSE, INTERCHANGE RED & BLK LEADS

614131-357

GRN/YEL (GRD)	3/5 [76/127]	#10 EYELET
YEL/BLK	5/7 [127/178]	.50[12.70] STRIP
BLACK	7/8 [178/203]	.25[6.35] FLAG .50[12.70] STRIP
BLACK	5/7 [127/178]	.25[6.35] FLAG
BROWN	5/7 [127/178]	.50[12.70] STRIP
YELLOW	5/7 [127/178]	.50[12.70] STRIP
ORANGE	5/7 [127/178]	.50[12.70] STRIP
WHITE	5/7 [127/178]	.50[12.70] STRIP
RED	5/7 [127/178]	.50[12.70] STRIP
COLOR	LENGTH	TERMINAL OR STRIP LENGTH

MAIN FRAME - OLE	ENCL.
END FRAME - OLE	ENCL.
MAIN FRAME - LE	ENCL.
END FRAME - LE	ENCL.

REGAL-BELOIT CORPORATION (RBC) PROVIDES TECHNICAL ASSISTANCE TO OUR CUSTOMERS IN SEVERAL AREAS. SINCE RBC DOES NOT RECEIVE ALL DATA CONCERNING THE USE AND APPLICATION OF THE MOTOR, THE SUITABILITY OF THE MOTOR FOR THE APPLICATION MUST BE DETERMINED BY THE CUSTOMER.

DIMENSIONS WITHOUT TOLERANCES ARE FOR REFERENCE ONLY.

CUSTOMER DIST. SERVICES

PERFORMANCE CURVE NO.	TORQUE @1700 RPM (25°C)	APPROVED SAMPLE	UL COMPONENT		CSA	
			FILE #	CCN #	FILE #	CLASS #
C32695	27.0 OZ. FT.	0603100B	E46412	PRGY2	LR43341	4211-01

LEAD DATA

DRAWING REVISION A	REVISION BY CADDIE.ZHOU	DATE 06-15-2018
ECC	APPROVED BY SARA.HELTON	DATE 06-15-2018
ECC-0146759		
ECC DESCRIPTION		
NEW DWAWING		

COPYRIGHT REGAL-BELOIT AMERICA, INC. ALL RIGHTS RESERVED. PROPRIETARY AND CONFIDENTIAL INFORMATION - THIS DOCUMENT IS THE PROPERTY OF REGAL-BELOIT AMERICA, INC. ("OWNER") AND CONTAINS OWNER'S PROPRIETARY INFORMATION. ANY PERSON, CORPORATION OR OTHER FIRM RECEIVING IT IS DEEMED, BY RECEIVING IT, TO AGREE THAT IT, AND/OR ANY PART OF IT, SHALL NOT BE DISCLOSED TO ANY PERSON, CORPORATION OR OTHER ENTITY, DUPLICATED, AND/OR USED, EXCEPT AS EXPRESSLY APPROVED IN WRITING IN ADVANCE BY OWNER. THIS DOCUMENT SHALL BE RETURNED TO OWNER UPON REQUEST. IT MAY BE SUBJECT TO CERTAIN RESTRICTIONS UNDER APPLICABLE EXPORT CONTROL LAWS AND REGULATIONS.

ENCLOSURE

DRAWN BY: CADDIE.ZHOU
DATE: 06-15-2018
APPROVED BY: SARA.HELTON
DATE: 06-15-2018
PROCESS/FINISH

REGAL™ Regal Beloit America, Inc.

DESCRIPTION MODEL-RFHP-48FR OUTLINE

THIRD ANGLE PROJECTION

SIZE DWG NO C

C044A

SHEET 1