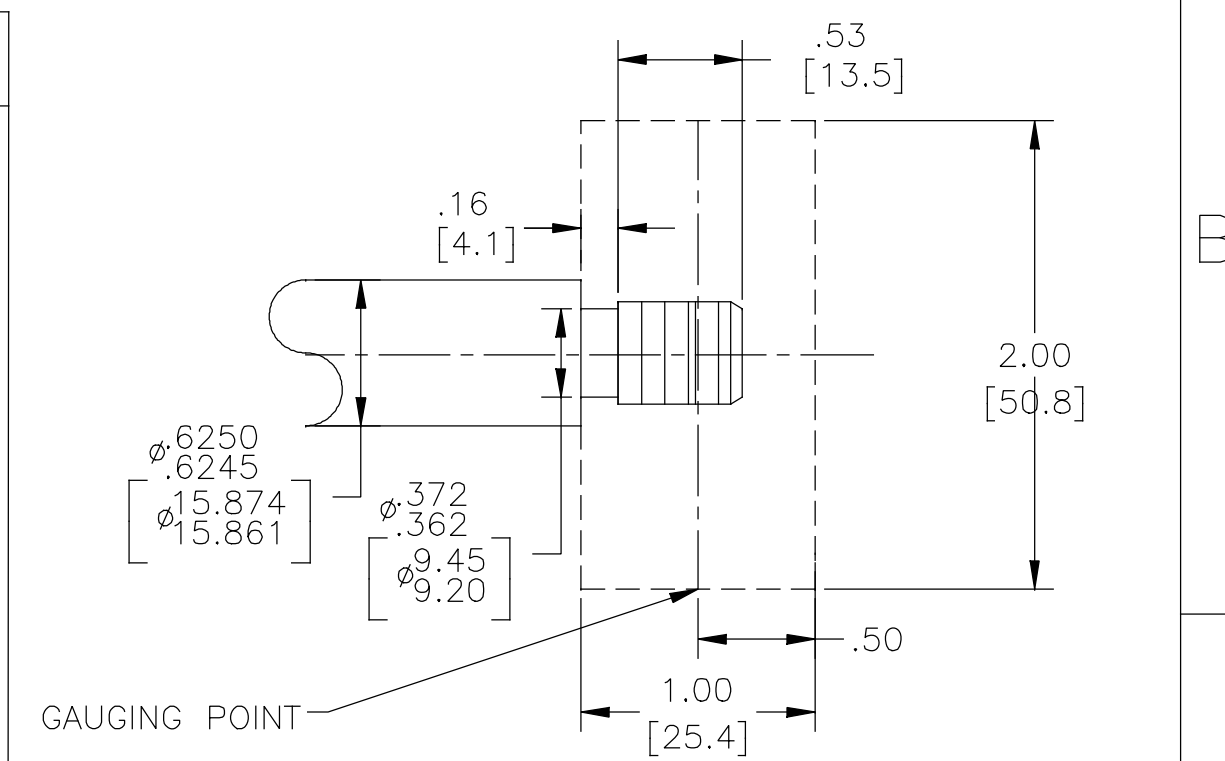


NAMEPLATE DATA		EXTERNAL CONNECTION DIAGRAM	NOTES
MODEL: 165126 CUST PN: B818 HP: 3.0 SF: 1.15 ROT: CCWPE RPM: 3450 TYPE: CX FORM: CODE: F FRAME: Y 56 J VOLTS: 208-230 AMPS: 15.0-13.6 MAX AMPS: SF AMPS: - PH: 1 HZ: 60 INS: B AMB: 50°C DUTY: CONT ENCLOSURE: ODP THERMALLY PROTECTED			<ul style="list-style-type: none"> ▲ PILOT DIAMETER IS CONCENTRIC WITH SHAFT CENTERLINE WITHIN .004[.10] T.I.R. ▲ FACE OF MOUNTING FLANGE IS PERPENDICULAR TO SHAFT CENTERLINE WITHIN .004[.10] T.I.R. 3. SHAFT RUNOUT NOT TO EXCEED .002[.05] T.I.R 4. END PLAY NOT TO EXCEED .010[.25] MEASURED WITH NO THRUST



PERFORMANCE CURVE		APPROVED SAMPLE	
15530311			
UL COMPONENT		CSA	
FILE#	CCN#	FILE#	GUIDE#
PENDING	PENDING	PENDING	PENDING
CUSTOMER			

DRAWING REVISION	REVISION BY	DATE	TOLERANCES UNLESS OTHERWISE SPECIFIED	DRAWN BY:	Regal Beloit America, Inc.
D	G. RODRIGUEZ	04-25-2019	DEC. INCH mm ANGLE	AS	
ECO	APPROVED BY	DATE	.X ±0.1 [±2.5] ±0.5°	DATE:	
ECO-0165900	G. RODRIGUEZ	04-25-2019	.XX ±0.02 [±0.51]	10-21-2010	
ECO DESCRIPTION			.XXX ±0.005 [±0.127]	APPROVED BY:	DESCRIPTION
SEE ECO			.XXXX ±0.0005 [±0.0127]	TZ	
COPYRIGHT REGAL BELOIT AMERICA, INC. ALL RIGHTS RESERVED. PROPRIETARY AND CONFIDENTIAL INFORMATION - THIS DOCUMENT IS THE PROPERTY OF REGAL BELOIT AMERICA, INC. (OWNER) AND CONTAINS OWNER'S PROPRIETARY INFORMATION. ANY PERSON, CORPORATION OR OTHER FIRM RECEIVING IT IS DEEMED, BY RECEIVING IT, TO AGREE THAT IT, AND/OR ANY PART OF IT, SHALL NOT BE DISCLOSED TO ANY PERSON, CORPORATION OR OTHER ENTITY, DUPLICATED, AND/OR USED, EXCEPT AS EXPRESSLY APPROVED IN WRITING IN ADVANCE BY OWNER. THIS DOCUMENT SHALL BE RETURNED TO OWNER UPON REQUEST. IT MAY BE SUBJECT TO CERTAIN RESTRICTIONS UNDER APPLICABLE EXPORT CONTROL LAWS AND REGULATIONS.			REMOVE BURRS & BREAK SHARP EDGES .003/.015 [0.076/.381] X 45° CORNER FILLETS R.02 [5.1] MACHINED SURFACES 125/32 INCH/mm	DATE:	MATERIAL
			MACHINED SURFACES 125/32 INCH/mm	10-21-2010	
			mm SHOWN IN [BRACKETS]	REFERENCE	PROCESS/FINISH
				THIRD ANGLE PROJECTION	SIZE DWG NO
					B818
					SHEET
					1