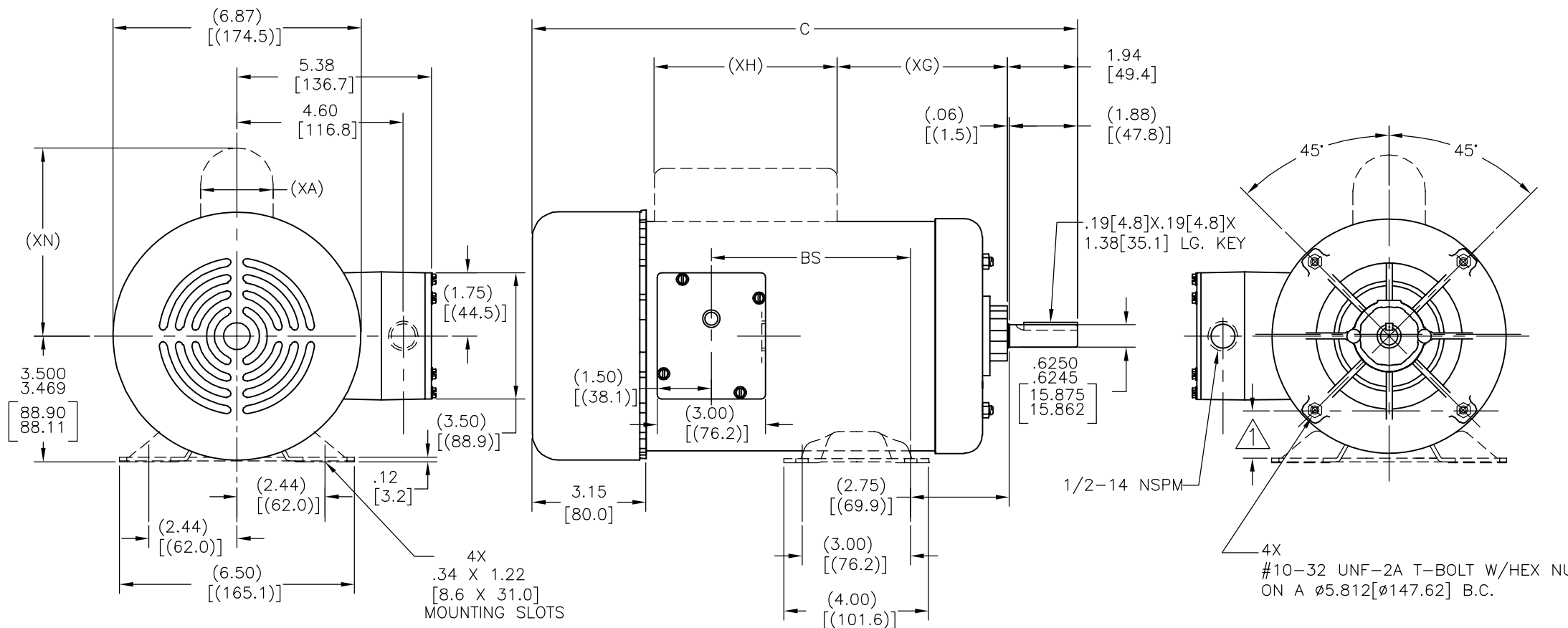


REV	ECO	REV BY	DATE	APPD	DATE
F	0009456	R.RASCON	09-26-2009	C.CONTRERAS	09-26-2009



ALL DIMENSIONS SHOWN IN PARENTHESIS ARE REFERENCE DIMENSIONS. ALL OTHER DIMENSIONS ARE TOLERANCED PER THE FOLLOWING CHART UNLESS OTHERWISE SPECIFIED.

"C" DIM.	= +/- .055 [1.40]
SHAFT EXT.	= +/- .034 [.86]
LEAD LENGTHS EXTENDED	= +/- 1.00 [25.4]
THRU-BOLTS	= +/- .050 [1.27]
ANGULAR DIMS.	= +/- 2'

FRAME	TYPE	C	BS	XA	XG	XH	XN
B56	CS	11.03 [280.2]	1.49 [37.8]	1.64 [41.7]	1.59 [40.4]	4.08 [103.6]	4.87 [123.7]
	SC,SP						
H56	CS	11.28 [286.5]	1.74 [44.2]	1.64 [41.7]	1.84 [46.7]	4.08 [103.6]	4.87 [123.7]
	SC,SP						
J56	CS	12.28 [311.9]	2.74 [69.6]	1.64 [41.7]	2.84 [72.1]	4.08 [103.6]	4.87 [123.7]
	SC,SP						
K56	CS	12.65 [321.3]	3.12 [79.2]	1.64 [41.7]	3.21 [81.5]	4.08 [103.6]	4.87 [123.7]
	SC,SP						
L56	CS	13.40 [340.4]	3.87 [98.3]	1.64 [41.7]	3.96 [100.6]	4.08 [103.6]	4.87 [123.7]
	SC,SP						
M56	CS	13.90 [353.1]	4.37 [111.0]	2.02 [51.3]	4.46 [113.3]	4.08 [103.6]	5.25 [133.4]
	SC,SP						

- NOTES:
- FOR RIGID BASE ONLY: THE 2 BOTTOM HOLES IN THE MOUNTING FLANGE ARE PARALLEL FROM THE BOTTOM OF THE FEET WITHIN .030 [.76]
 - CONDUIT HOLE LOCATION AS SPECIFIED.

GEOMETRIC CHARACTERISTICS & SYMBOLS

- ▭ FLATNESS
- STRAIGHTNESS
- ∠ ANGULARITY
- ⊥ PERPENDICULARITY (SQUARENESS)
- ∥ PARALLELISM
- ROUNDNESS (CIRCULARITY)
- ⊘ CYLINDRICITY
- △ PROFILE OF ANY SURFACE
- ∩ PROFILE OF ANY LINE
- ↗ RUNOUT
- ⊕ TRUE POSITION
- ◎ CONCENTRICITY
- ≡ SYMMETRY

UNLESS OTHERWISE SPECIFIED DIM. TOLERANCES ARE AS FOLLOWS:

INCH	±.1	±.02	±.005	±.0005
mm	±0.5	±0.13	±0.013	

ANG. ±.50 DEG
REMOVE BURRS & BREAK SHARP EDGES:
INCH .003-.015 mm 0.1-0.4
CORNER FILLETS TO:
INCH .020 mm 0.5
MACHINE SURFACES:
INCH 125 mm 3.2
METRIC DIMS. SHOWN IN [BRACKETS]

DR BY: .
APPD: MS 11-27-2006
THIRD ANGLE PROJECTION
EDS DATE 11-27-2006
EDS DATE 11-27-2006
FORMAT REV F
CONFIDENTIAL: THIS DRAWING AND ITS INFORMATION ARE THE EXCLUSIVE AND CONFIDENTIAL PROPERTY OF A.O. SMITH CORP. AND ARE NOT TO BE DISCLOSED, DUPLICATED, DISTRIBUTED OR OTHERWISE USED WITHOUT THE WRITTEN CONSENT OF A.O. SMITH CORP.
-ALL RIGHTS RESERVED. ASME Y14.5M 1994

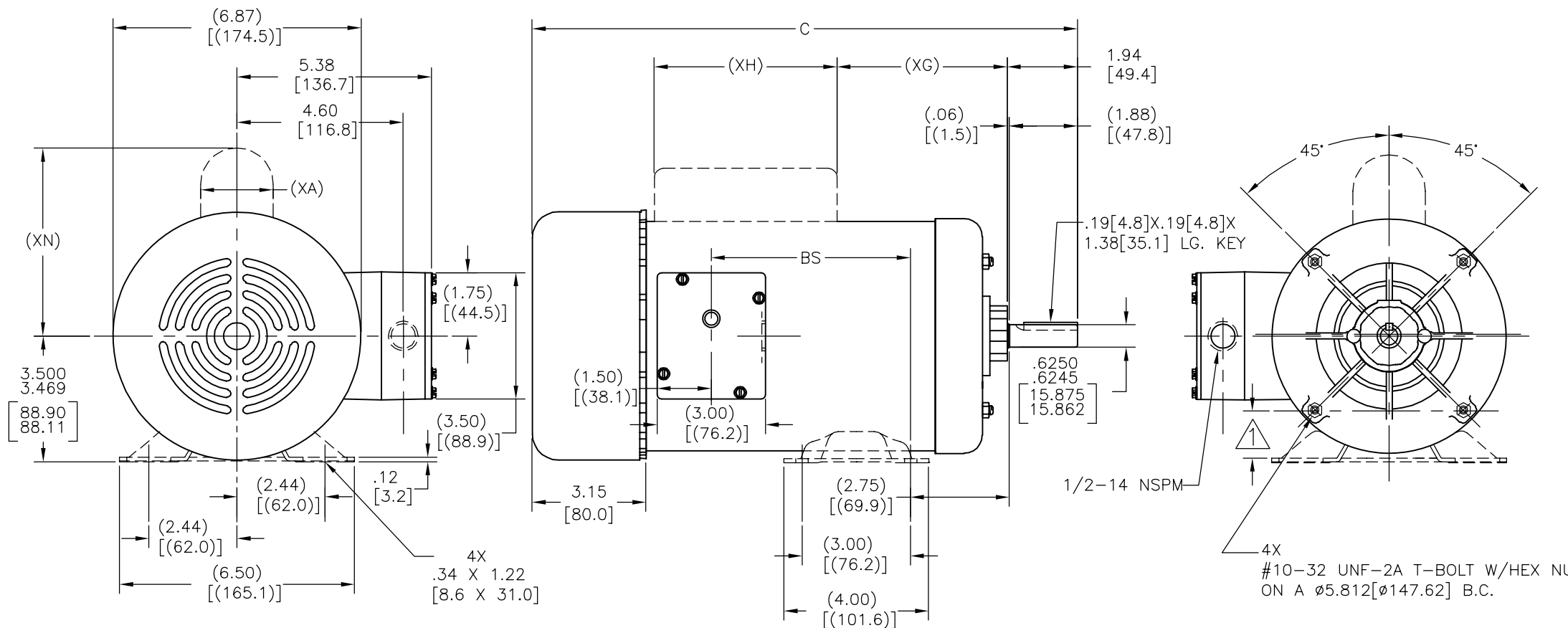
ACSmith **ELECTRICAL PRODUCTS COMPANY**
Innovation has a name. A DIVISION OF A. O. SMITH CORPORATION

DESCRIPTION: **OUTLINE**

SIZE: C DWG NO: 114506

SCALE: NONE SHEET: 1

REVISION:	ECO	REVISADO POR:	FECHA:	APROBADO POR:	FECHA:
F	0009456	R.RASCON	09-26-2009	C.CONTRERAS	09-26-2009



FRAME	TYPE	C	BS	XA	XG	XH	XN
B56	CS	11.03[280.2]	1.49[37.8]	1.64[41.7]	1.59[40.4]	4.08[103.6]	4.87[123.7]
	SC,SP						
H56	CS	11.28[286.5]	1.74[44.2]	1.64[41.7]	1.84[46.7]	4.08[103.6]	4.87[123.7]
	SC,SP						
J56	CS	12.28[311.9]	2.74[69.6]	1.64[41.7]	2.84[72.1]	4.08[103.6]	4.87[123.7]
	SC,SP						
K56	CS	12.65[321.3]	3.12[79.2]	1.64[41.7]	3.21[81.5]	4.08[103.6]	4.87[123.7]
	SC,SP						
L56	CS	13.40[340.4]	3.87[98.3]	1.64[41.7]	3.96[100.6]	4.08[103.6]	4.87[123.7]
	SC,SP						
M56	CS	13.90[353.1]	4.37[111.0]	2.02[51.3]	4.46[113.3]	4.08[103.6]	5.25[133.4]
	SC,SP						

= +/- .055[1.40]
 = +/- .034[.86]
 = +/- 1.00[25.4]
 = +/- .050[1.27]
 = +/- 2'

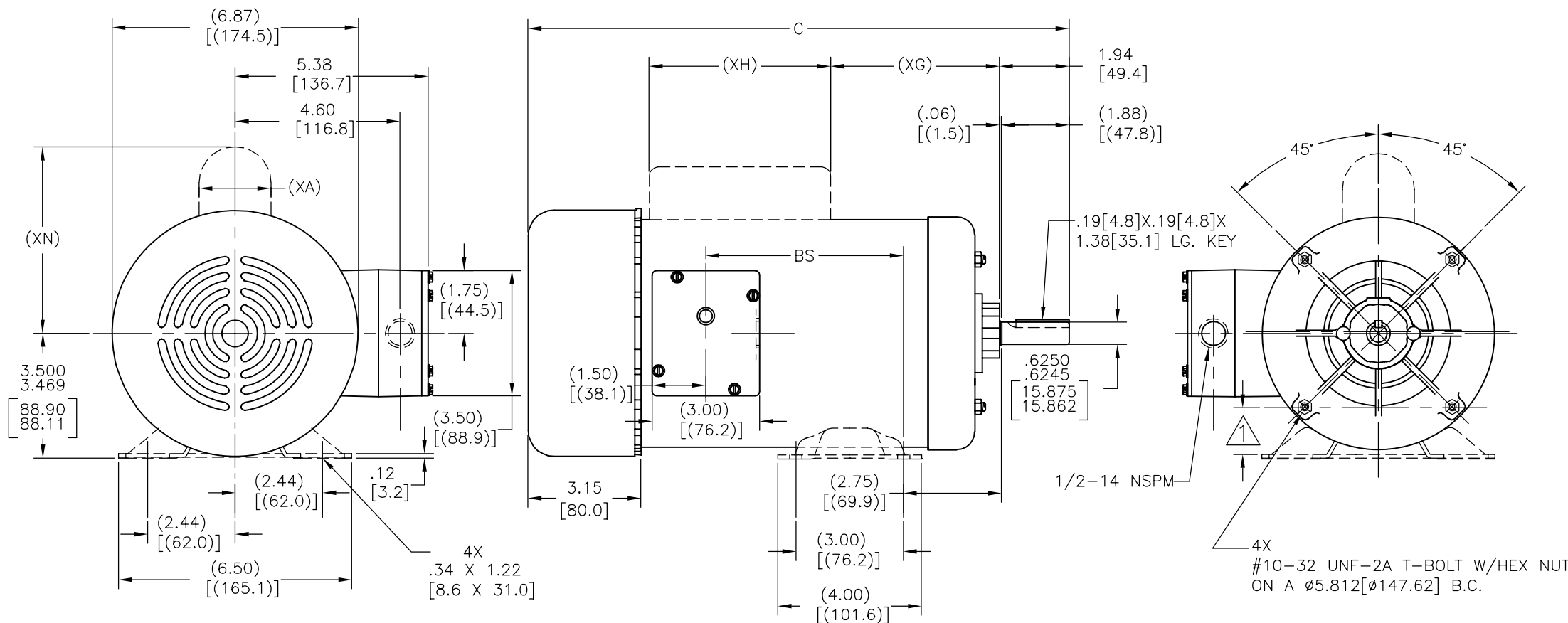
CARACTERISTICAS DE GEOMETRIA Y SIMBOLOS
 ▽ PLANICIDAD
 - RECTITUD
 < ANGULARIDAD
 ⊥ PERPENDICULARIDAD (A ESCUADRA)
 // PARALELISMO
 ○ REDONDEZ (CIRCULARIDAD)
 ∅ CILINDRICIDAD
 △ PERFIL DE CUALQUIER SUPERFICIE
 ▲ PERFIL DE CUALQUIER LINEA
 ↗ VARIACION
 ⊕ POSICION REAL
 ⊙ CONCENTRICIDAD
 = SIMETRIA

A MENOS QUE SE ESPECIFIQUE DE OTRA MANERA, LAS TOLERANCIAS DE LAS DIMS; SON LAS SIGUIENTES:
 PULG ±.1 ±.02 ±.005 ±.0005
 mm ±0.5 ±0.13 ±0.013
 ANG. ± 50 GRADOS
 ELIMINAR REBABAS Y ORILLAS FILOSAS DEL BORDE.
 PULG .003-.015 mm 0.1-0.4
 FILETEAR ESQUINA: PULG .020 mm 0.5
 MAQUINAR SUPERFICIES
 PULG 125 mm 3.2
 DIMS METRICAS MOSTRADAS [PARENTESIS]

DIBUJADO POR:
 APROBADO POR: MS
 TERCER ANGULO DE PROYECCION
 CONFIDENCIAL: ESTE DIBUJO Y SU INFORMACION SON PROPIEDAD DE USO EXCLUSIVO Y CONFIDENCIAL DE A.O.SMITH CORP. Y NO DEBERAN SER REVELADOS, DUPLICADOS, DISTRIBUIDOS O USARSE DE OTRA MANERA SIN EL CONSENTIMIENTO ESCRITO DE A.O. SMITH CORP. -TODOS LOS DERECHOS RESERVADOS.ASME Y14.5M 1994

ACSmith **ELECTRICAL PRODUCTS COMPANY**
 Innovation has a name. A DIVISION OF A. O. SMITH CORPORATION
 DESCRIPCION: **OUTLINE**
 TAMAÑO: C NUMERO DE DIBUJO: 114506
 ESCALA: NONE HOJA: 1

版本	ECO	编制	日期	批准	日期
F	0009456	R.RASCON	09-26-2009	C.CONTRERAS	09-26-2009



FRAME	TYPE	C	BS	XA	XG	XH	XN
B56	CS	11.03[280.2]	1.49[37.8]	1.64[41.7]	1.59[40.4]	4.08[103.6]	4.87[123.7]
	SC,SP						
H56	CS	11.28[286.5]	1.74[44.2]	1.64[41.7]	1.84[46.7]	4.08[103.6]	4.87[123.7]
	SC,SP						
J56	CS	12.28[311.9]	2.74[69.6]	1.64[41.7]	2.84[72.1]	4.08[103.6]	4.87[123.7]
	SC,SP						
K56	CS	12.65[321.3]	3.12[79.2]	1.64[41.7]	3.21[81.5]	4.08[103.6]	4.87[123.7]
	SC,SP						
L56	CS	13.40[340.4]	3.87[98.3]	1.64[41.7]	3.96[100.6]	4.08[103.6]	4.87[123.7]
	SC,SP						
M56	CS	13.90[353.1]	4.37[111.0]	2.02[51.3]	4.46[113.3]	4.08[103.6]	5.25[133.4]
	SC,SP						

= +/- .055[1.40]
 = +/- .034[.86]
 = +/- 1.00[25.4]
 = +/- .050[1.27]
 = +/- 2'

形位公差	除另有注明
□ 平面度	尺寸公差如下:
— 直线度	英寸 X XX XXX XXXX
∠ 倾斜度	英寸 ±.1 ±.02 ±.005 ±.0005
⊥ 垂直度	毫米 ±0.5 ±0.13 ±0.013
// 平行度	角度 ±.50 度
○ 圆度	清理毛刺和尖棱
⊘ 圆柱度	英寸 .003-.015 毫米 0.1-0.4
△ 面轮廓度	内圆角
∩ 线轮廓度	英寸 .020 毫米 0.5
∧ 圆跳动	表面粗糙度
⊕ 位置度	英制 125 米制 3.2
⊙ 同轴度	米制尺寸显示在 []
≡ 对称度	

除另有注明
 尺寸公差如下:
 英寸 X XX XXX XXXX
 英寸 ±.1 ±.02 ±.005 ±.0005
 毫米 ±0.5 ±0.13 ±0.013
 角度 ±.50 度
 清理毛刺和尖棱
 英寸 .003-.015 毫米 0.1-0.4
 内圆角
 英寸 .020 毫米 0.5
 表面粗糙度
 英制 125 米制 3.2
 米制尺寸显示在 []

绘图:	
批准:	MS 11-27-2006
第三角投影	
机密: 本图纸及相关信息所有权归A. O. SMITH公司所有。未经A. O. SMITH公司书面授权, 不得泄露、复制、传播或作其他用途。—版权所有	图纸格式发布日期 EDS DATE 图纸格式版本 F
ASME Y14.5M 1994	

ELECTRICAL PRODUCTS COMPANY A DIVISION OF A. O. SMITH CORPORATION	
名称	OUTLINE
图幅	C
图号	114506
比例	NONE
页号	1



D
C
B
A

D
C
B
A

4
3
2
1

4
3
2
1

4
3
2
1

4
3
2
1