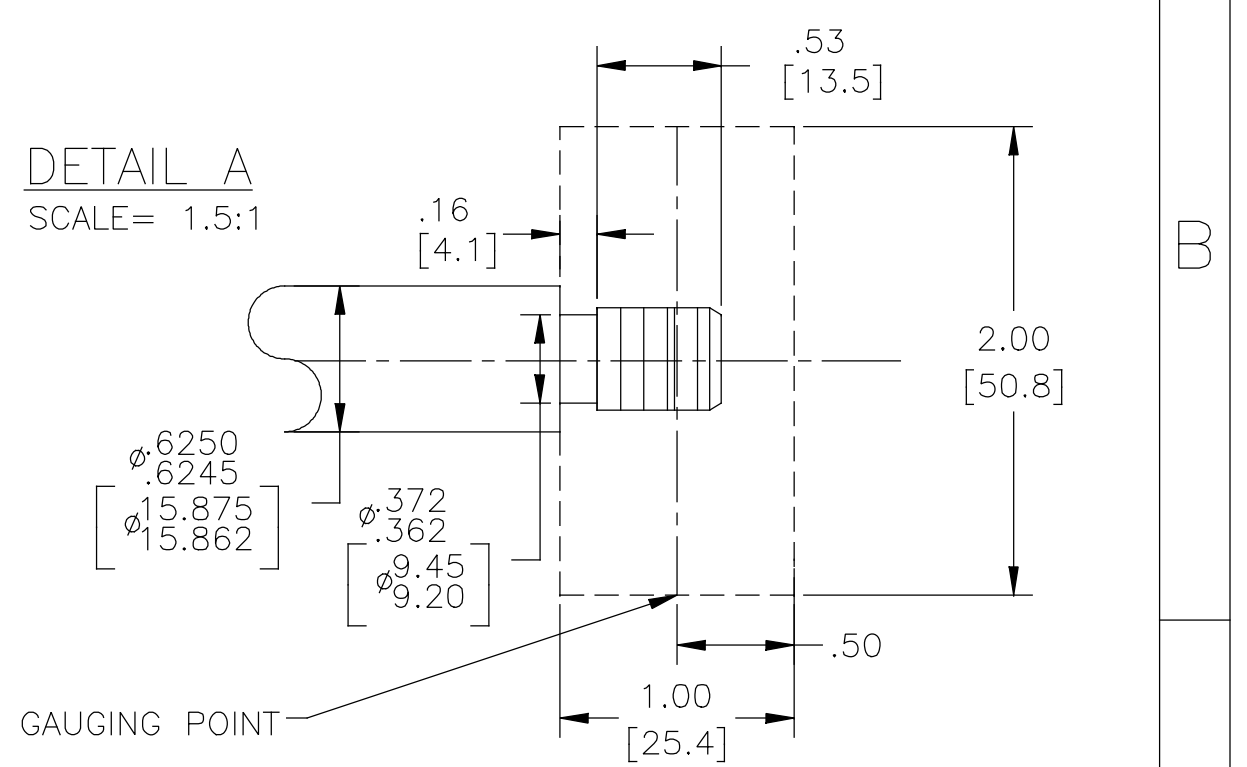


NAMEPLATE DATA	EXTERNAL CONNECTION DIAGRAM	NOTES
MODEL: 165118 CUST PN: B638 HP: 3/4 SF: 1.50 ROT: CCWPE RPM: 3450 TYPE: CX FORM: CODE: L FRAME: U 56 J VOLTS: 208-230/115 AMPS: MAX AMPS: SF AMPS: 5.4-5.0/10.0 PH: 1 HZ: 60 INS: B AMB: 50°C DUTY: CONT ENCLOSURE: ODP THERMALLY PROTECTED	<p>175367-15</p> <p>LOW VOLTAGE</p> <p>BROWN — B</p> <p>WHITE — L1 LINE</p> <p>WHITE — L2 LINE</p> <p>A</p> <p>HIGH VOLTAGE</p> <p>WHITE — B</p> <p>L1 LINE</p> <p>L2 LINE</p> <p>BROWN — A</p> <p>NON-REVERSIBLE</p>	<p>1. PILOT DIAMETER IS CONCENTRIC WITH SHAFT CENTERLINE WITHIN .004[.10] T.I.R.</p> <p>2. FACE OF MOUNTING FLANGE IS PERPENDICULAR TO SHAFT CENTERLINE WITHIN .004[.10] T.I.R.</p> <p>3. SHAFT RUNOUT NOT TO EXCEED .002[.05] T.I.R</p> <p>4. END PLAY NOT TO EXCEED .010[.25] MEASURED WITH NO THRUST</p>



PERFORMANCE CURVE	APPROVED SAMPLE		
16380512	----		
UL COMPONENT	CSA		
FILE#	CCN#	FILE#	GUIDE#
E14663	XEWR2	LR4642	4211-01
CUSTOMER	DISTRIBUTION		

DRAWING REVISION	REVISION BY	DATE	TOLERANCES UNLESS OTHERWISE SPECIFIED	DRAWN BY:	Regal Beloit America, Inc. DESCRIPTION: MODEL-CFHP-56FR OUTLINE MATERIAL: _____ PROCESS/FINISH: _____ SIZE: C DWG NO: B638 SHEET: 1
E	G. RODRIGUEZ	04-24-2019	DEC. INCH mm ANGLE	YL	
ECO	APPROVED BY	DATE	.X ±0.1 [±2.5] ±0.5°	DATE: 10-21-2010	
ECO-0165900	G. RODRIGUEZ	04-24-2019	.XX ±0.02 [±0.51]	APPROVED BY: TZ	
ECO DESCRIPTION			.XXX ±0.005 [±0.127]	DATE: 10-21-2010	
SEE ECO			.XXXX ±0.0005 [±0.0127]	REFERENCE	
COPYRIGHT REGAL BELOIT AMERICA, INC. ALL RIGHTS RESERVED. PROPRIETARY AND CONFIDENTIAL INFORMATION - THIS DOCUMENT IS THE PROPERTY OF REGAL BELOIT AMERICA, INC. (OWNER) AND CONTAINS OWNER'S PROPRIETARY INFORMATION. ANY PERSON, CORPORATION OR OTHER FIRM RECEIVING IT IS DEEMED, BY RECEIVING IT, TO AGREE THAT IT, AND/OR ANY PART OF IT, SHALL NOT BE DISCLOSED TO ANY PERSON, CORPORATION OR OTHER ENTITY, DUPLICATED, AND/OR USED, EXCEPT AS EXPRESSLY APPROVED IN WRITING IN ADVANCE BY OWNER. THIS DOCUMENT SHALL BE RETURNED TO OWNER UPON REQUEST. IT MAY BE SUBJECT TO CERTAIN RESTRICTIONS UNDER APPLICABLE EXPORT CONTROL LAWS AND REGULATIONS.			REMOVE BURRS & BREAK SHARP EDGES .003/.015 [.076/.381] X 45° CORNER FILLETS R.02 [.51] MACHINED SURFACES 125/INCH 3.2/mm	THIRD ANGLE PROJECTION	