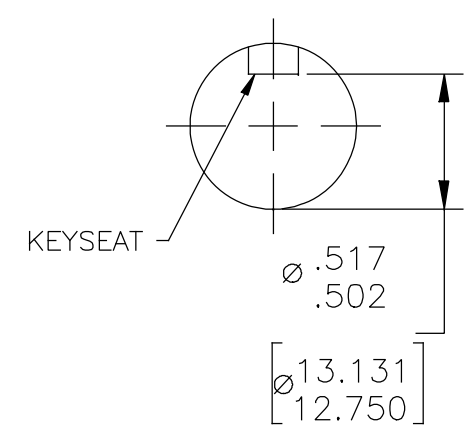
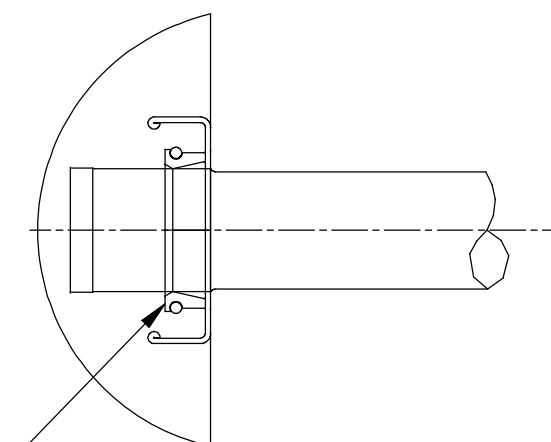


- NOTES:
1. RABBET DIAMETER IS CONCENTRIC WITH SHAFT q WITHIN .004[.10] T.I.R.
  2. FACE OF MOUNTING FLANGED IS PERPENDICULAR TO SHAFT q .004[.10] T.I.R.
  3. SHAFT RUNOUT NOT TO EXCEED .002[.05] T.I.R.
  4. FOR RIGID BASE ONLY: THE 2 BOTTOM HOLES IN THE MOUNTING FLANGE ARE EQUIDISTANT FROM THE BOTTOM OF THE FEET WITHIN .030[.8]
  5. ECCENTRICITY OF TREADED PORTION TO BE HELD WITH .004[.10] GAUGE READING WITH INDICATOR ON O.D. OF GROUND RING.

DETAIL VIEW OF SHAFT



SHAFT SEAL W/LIP FACING TOWARD OUTSIDE OF MOTOR (BOTH ENDS WHEN REQ'D)



DRAWING REVISION E	REVISION BY D.VALENCIANO	DATE 08-29-2018	TOLERANCES UNLESS OTHERWISE SPECIFIED DEC. INCH mm ANGLE .XX ±0.1 [±2.5] ±0.5° .XX ±0.02 [±0.51] .XXX ±0.005 [±0.127] .XXXX ±0.0005 [±0.0127]	DRAWN BY: G. RODRIGUEZ	Regal Beloit America, Inc.
ECO ECO-0151719	APPROVED BY M.ARGUELLES	DATE 08-29-2018	REMOVE BURRS & BREAK SHARP EDGES .003/.015 [0.076/.381] CORNER FILLETS .02 [51] MACHINED SURFACES 125/3.2 INCH/mm	DATE: 05-12-2011	
ECO DESCRIPTION ADDED FRONT SHAFT VIEW			PROCESS/FINISH	APPROVED BY: T. REYES	DESCRIPTION MODEL-CHFP-56FR OUTLINE
<small>COPYRIGHT REGAL BELOIT AMERICA, INC. ALL RIGHTS RESERVED. PROPRIETARY AND CONFIDENTIAL INFORMATION - THIS DOCUMENT IS THE PROPERTY OF REGAL BELOIT AMERICA, INC. (OWNER) AND CONTAINS OWNER'S PROPRIETARY INFORMATION. ANY PERSON, CORPORATION OR OTHER FIRM RECEIVING IT IS DEEMED, BY RECEIVING IT, TO AGREE THAT IT, AND/OR ANY PART OF IT, SHALL NOT BE DISCLOSED TO ANY PERSON, CORPORATION OR OTHER ENTITY, DUPLICATED, AND/OR USED, EXCEPT AS EXPRESSLY APPROVED IN WRITING IN ADVANCE BY OWNER. THIS DOCUMENT SHALL BE RETURNED TO OWNER UPON REQUEST. IT MAY BE SUBJECT TO CERTAIN RESTRICTIONS UNDER APPLICABLE EXPORT CONTROL LAWS AND REGULATIONS.</small>			MATERIAL	DATE: 05-12-2011	SHEET 1
			THIRD ANGLE PROJECTION	SIZE DWG NO C B583	