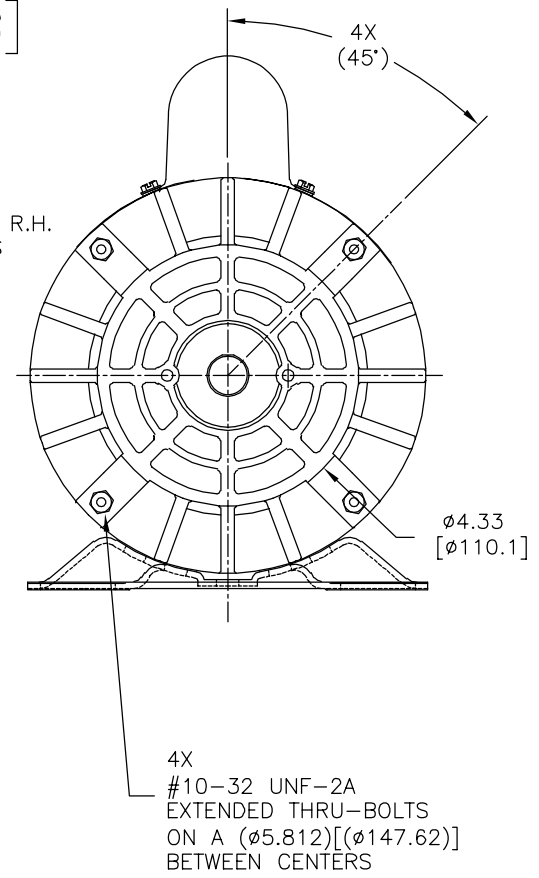
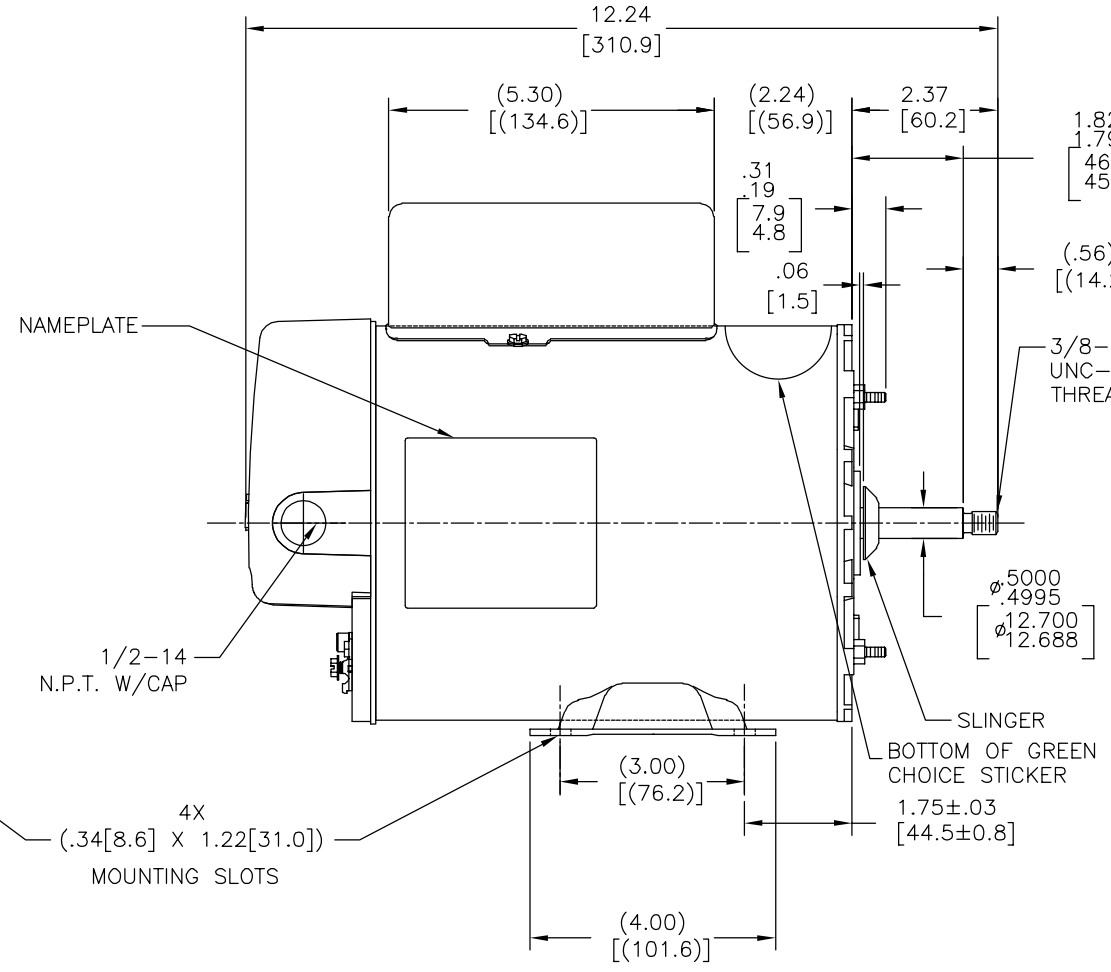
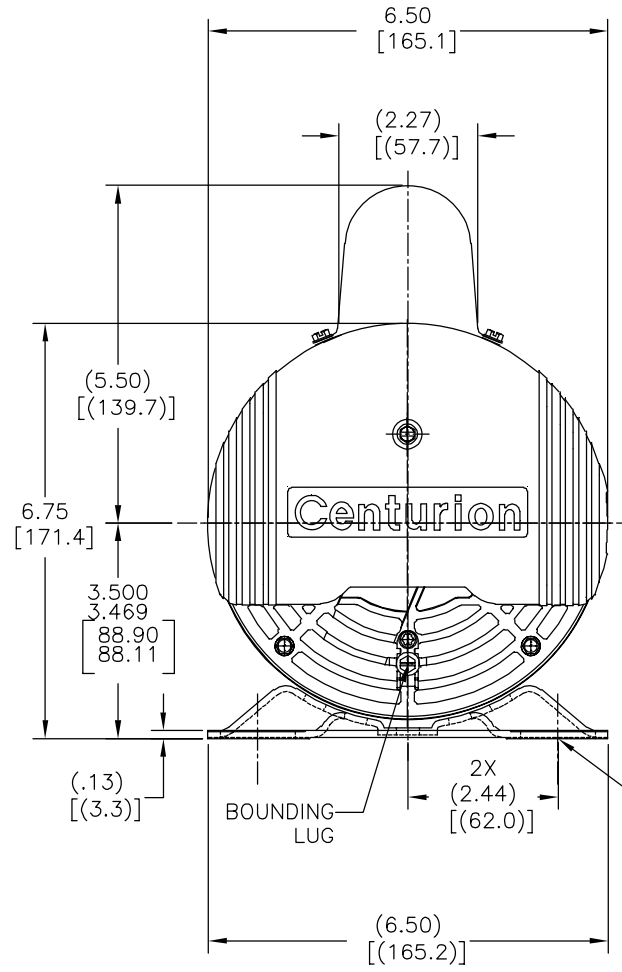
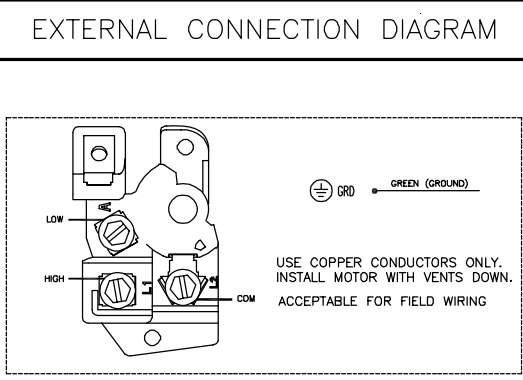


REV	ECO	REV BY	DATE	APPD	DATE
F	0030713	A.NAJERA	02-05-2013	J. DE LUNA	02-05-2013



NAMEPLATE DATA	
MODEL: F56AA54A01	CUST PN: B2233
HP: _____	SF: _____
ROT: CCWPE	
RPM: 3450/1725	
TYPE: CXCP	CODE: K
FORM: KJM	FRAME: X56Y
VOLTS: 230	
AMPS:	
MAX AMPS: 7.4/1.4	
SF AMPS:	
PH: 1	HZ: 60
INS: F	AMB: 50
DUTY: CONT	
ENCLOSURE: ODP	
THERMALLY PROTECTED	



- NOTES
- SHAFT RUNOUT NOT TO EXCEED .002[.05] T.I.R
  - ALL DIMENSIONS SHOWN IN PARENTHESIS ARE REFERENCE DIMENSIONS.
  - REF  
 1.50/.190HP      6.4/1.2A  
 1.65/.209HP      6.8/1.3A  
 MAXLOAD AMPS    7.4/1.4A

PERFORMANCE CURVE	APPROVED SAMPLE		
0116753	CSR-0000310		
UL COMPONENT	CSA		
FILE#	CCN#	FILE#	GUIDE#
E25022	XEWR2	LR43341	4211-01
CUSTOMER	DISTRIBUTION		

- GEOMETRIC CHARACTERISTICS & SYMBOLS
- FLATNESS
  - STRAIGHTNESS
  - ANGULARITY
  - PERPENDICULARITY (SQUARENESS)
  - PARALLELISM
  - ROUNDNESS (CIRCULARITY)
  - CYLINDRICITY
  - PROFILE OF ANY SURFACE
  - PROFILE OF ANY LINE
  - RUNOUT
  - TRUE POSITION
  - CONCENTRICITY
  - SYMMETRY
- ASME Y14.5M 1994

- UNLESS OTHERWISE SPECIFIED DIM. TOLERANCES ARE AS FOLLOWS:
- |      |      |       |        |        |
|------|------|-------|--------|--------|
| INCH | ±.1  | ±.02  | ±.005  | ±.0005 |
| mm   | ±0.5 | ±0.13 | ±0.013 |        |
- ANG. ±.50 DEG  
 REMOVE BURRS & BREAK SHARP EDGES:  
 INCH .003-.015 mm 0.1-0.4  
 CORNER FILLETS TO:  
 INCH .020 mm 0.5  
 MACHINE SURFACES:  
 INCH 125 mm 3.2
- METRIC DIMS. SHOWN IN [BRACKETS]

DR BY:	BL	02-08-2010
APPD:	TZ	02-08-2010
THIRD ANGLE PROJECTION	EDS DATE	11-11-2011
	FORMAT	REV H

CONFIDENTIAL: THIS DRAWING AND ITS INFORMATION ARE THE EXCLUSIVE AND CONFIDENTIAL PROPERTY OF REGAL-BELOIT CORPORATION AND ARE NOT TO BE DISCLOSED, DUPLICATED, DISTRIBUTED OR OTHERWISE USED WITHOUT THE WRITTEN CONSENT OF REGAL-BELOIT CORPORATION. -ALL RIGHTS RESERVED.

<b>REGAL REGAL-BELOIT CORPORATION</b>	
DESCRIPTION	MODEL- FPHP-56FR OUTLINE
SIZE	C
DWG NO	B2233
SCALE	NONE
SHEET	1

4

3

2

1

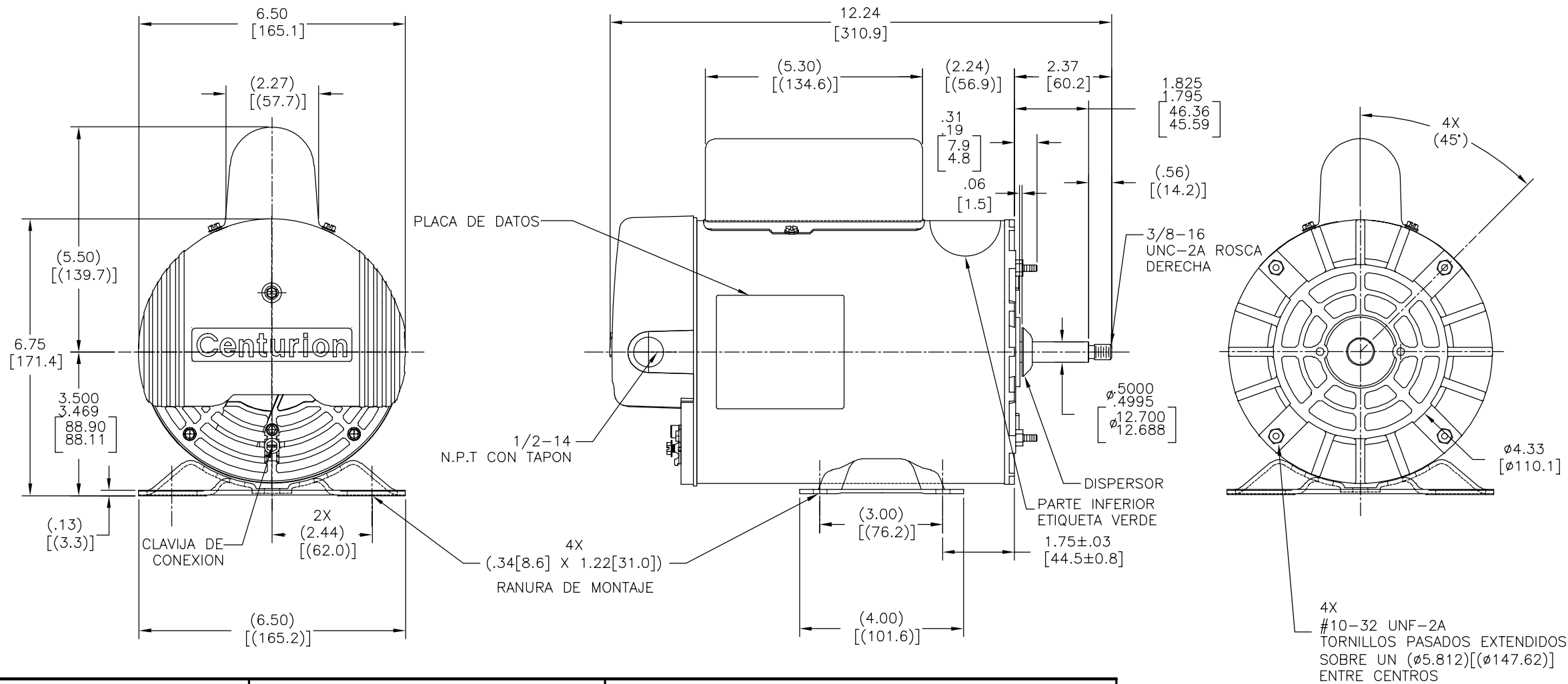
4

3

2

1

REVISION:	ECO	REVISADO POR:	FECHA:	APROBADO POR:	FECHA:
F	0030713	A.NAJERA	02-05-2013	J. DE LUNA	02-05-2013



NAMEPLATE DATA	EXTERNAL CONNECTION DIAGRAM	NOTES
MODEL: F56AA54A01 CUST PN: B2233 HP: _____ SF: _____ ROT: CCWPE RPM: 3450/1725 TYPE: CXCP CODE: K FORM: KJM FRAME: X56Y VOLTS: 230 AMPS: MAX AMPS: 7.4/1.4 SF AMPS: PH: 1 HZ: 60 INS: F AMB: 50 DUTY: CONT ENCLOSURE: ODP THERMALLY PROTECTED		1. LA OSCILACION DE FLECHA NO DEBE EXCEDER .002[.05] L.T.I. 2. TODAS LAS DIMENSIONES MOSTRADAS EN PARENTESIS SON DIMENSIONES DE REFERENCIA 3. REF 1.50/.190HP 6.4/1.2A 1.65/.209HP 6.8/1.3A MAXIMA PRECARGA 7.4/1.4A AMPS.

PERFORMANCE CURVE	APPROVED SAMPLE	CARACTERISTICAS DE GEOMETRIA Y SIMBOLOS Z PLANICIDAD - RECTITUD < ANGULARIDAD ⊥ PERPENDICULARIDAD (A ESCUADRA) // PARALELISMO ○ REDONDEZ (CIRCULARIDAD) ∅ CILINDRICIDAD △ PERFIL DE CUALQUIER SUPERFICIE ∩ PERFIL DE CUALQUIER LINEA / VARIACION ⊕ POSICION REAL ⊙ CONCENTRICIDAD = SIMETRIA	DIBUJADO POR: BL	02-08-2010	<b>REGAL REGAL-BELOIT CORPORATION</b> DESCRIPCION: MODEL- FPHP-56FR OUTLINE		
0116753	CSR-0000310		A MENOS QUE SE ESPECIFIQUE DE OTRA MANERA, LAS TOLERANCIAS DE LAS DIMS; SON LAS SIGUIENTES: PULG ±.1 ±.02 ±.005 ±.0005 mm ±0.5 ±0.13 ±0.013 ANG. ±.50 GRADOS ELIMINAR REBABAS Y ORILLAS FILOSAS DEL BORDE. PULG .003-.015 mm 0.1-0.4 FILETEAR ESQUINA: PULG .020 mm 0.5 MAQUINAR SUPERFICIES PULG 125 mm 3.2	APROBADO POR: TZ		02-08-2010	TAMAÑO: C
UL COMPONENT	CSA	ASME Y14.5M 1994	TERCER ANGULO DE PROYECCION	FECHA EDS: 11-11-2011	REV. FORMATO: H	ESCALA: NONE	HOJA: 1
FILE#	CCN#	FILE#	GUIDE#	CONFIDENCIAL: ESTE DIBUJO Y SU INFORMACION SON PROPIEDAD DE USO EXCLUSIVO Y CONFIDENCIAL DE REGAL-BELOIT CORPORATION. Y NO DEBERAN SER REVELADOS, DUPLICADOS, DISTRIBUIDOS O USARSE DE OTRA MANERA SIN EL CONSENTIMIENTO ESCRITO DE REGAL-BELOIT CORPORATION. -TODOS LOS DERECHOS RESERVADOS.			
E25022	XEWR2	LR43341	4211-01				
CUSTOMER	DISTRIBUTION						