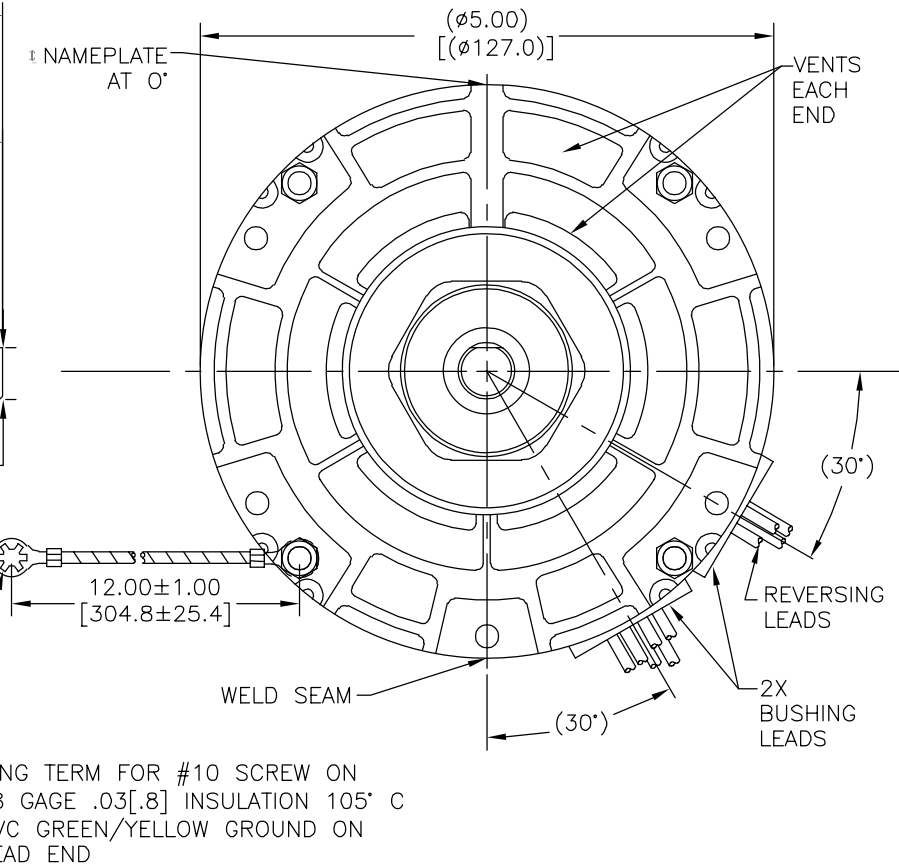
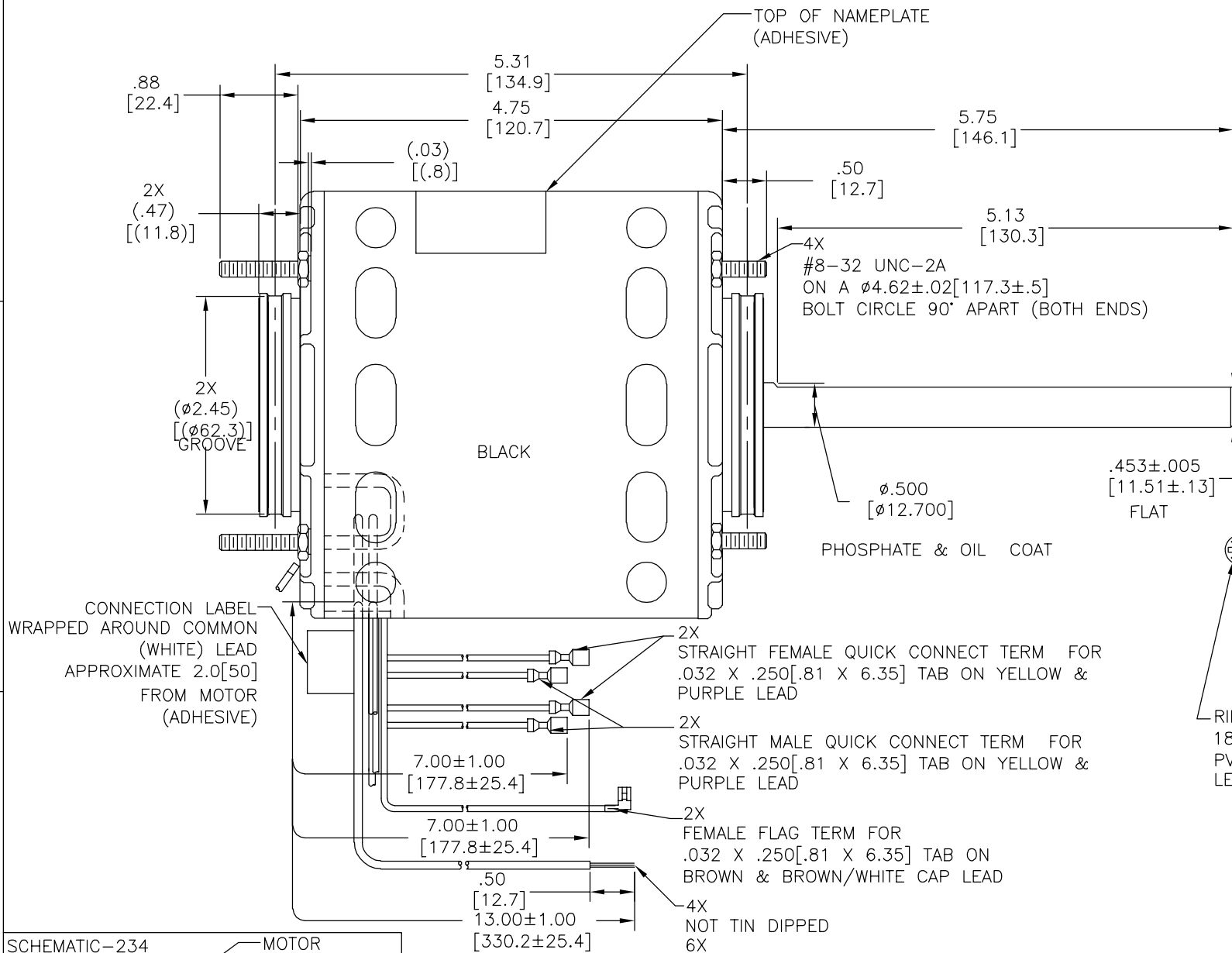


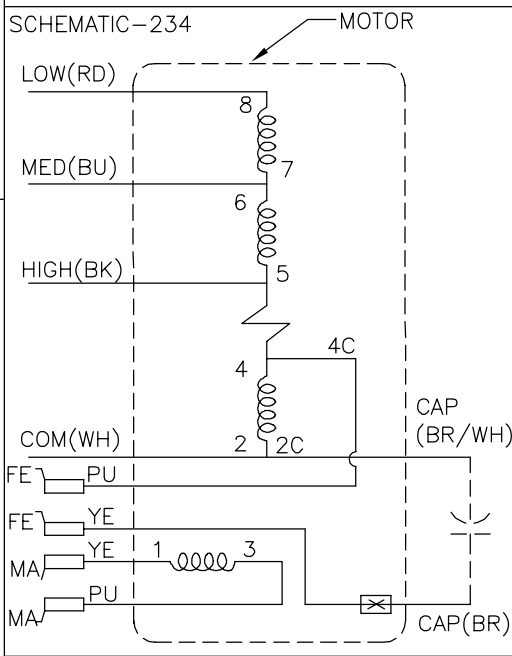
CUSTOMER IS SOLELY RESPONSIBLE FOR MOTOR PERFORMANCE AND SUITABILITY IN APPLICATIONS FOR CUSTOMER'S USES

REV	ECO	REV BY	DATE	APPD	DATE
C	0029019	I.ORTIZ	10-17-2012	M.AVILA	10-17-2012

END PLAY .005[.13] MINIMUM-.040[1.02] MAXIMUM  
 MAXIMUM SHAFT RUN OUT .001[.03] PER INCH  
 MAXIMUM RUN OUT NOT EXCEED .010[.25]



NOTE:  
 DISTRIBUTION: CUST. P/N: 9714  
 GRAINGER: CUST. P/N: 4UY18



CONNECTION LABEL  
 63T7433-107

CCWLE	PLUG IN YELLOW LEAD TO PURPLE LEAD
CWLE	PLUG IN PURPLE LEAD TO PURPLE LEAD

GEOMETRIC CHARACTERISTICS & SYMBOLS  
 □ FLATNESS  
 - STRAIGHTNESS  
 ∠ ANGULARITY  
 ⊥ PERPENDICULARITY (SQUARENESS)  
 // PARALLELISM  
 ○ ROUNDNESS (CIRCULARITY)  
 ∅ CYLINDRICITY  
 △ PROFILE OF ANY SURFACE  
 ∩ PROFILE OF ANY LINE  
 ↗ RUNOUT  
 ⊕ TRUE POSITION  
 ⊙ CONCENTRICITY  
 ≡ SYMMETRY

UNLESS OTHERWISE SPECIFIED DIM. TOLERANCES ARE AS FOLLOWS:  
 INCH X XX XXX XXXX  
 mm ±0.5 ±0.13 ±0.013  
 ANG. ±.50 DEG  
 REMOVE BURRS & BREAK SHARP EDGES:  
 INCH .003-.015 mm 0.1-0.4  
 CORNER FILLETS TO:  
 INCH .020 mm 0.5  
 MACHINE SURFACES:  
 INCH 125 mm 3.2

DR BY: G.ALVIDREZ 07-26-2011  
 APPD:  
 THIRD ANGLE PROJECTION  
 EDS DATE 11-11-2011  
 FORMAT REV H  
 CONFIDENTIAL: THIS DRAWING AND ITS INFORMATION ARE THE EXCLUSIVE AND CONFIDENTIAL PROPERTY OF REGAL-BELOIT CORPORATION AND ARE NOT TO BE DISCLOSED, DUPLICATED, DISTRIBUTED OR OTHERWISE USED WITHOUT THE WRITTEN CONSENT OF REGAL-BELOIT CORPORATION.  
 -ALL RIGHTS RESERVED.

ROT: REVERSIBLE

NAMEPLATE DATA:  
**Century** Tipp City, OH THERMALLY PROTECTED

SER. DATE & PO# PLT LTR MOD DE2G130N' STK. NO. SEE NOTE  
 VOLTS 115 HZ 60 AMPS 1.9  
 RPM 1625 SP3 PH1 CAP 5MFD/370VAC  
 INS CL B AMB40°C HP 1/6 AO ← ROT REV →  
 BRG SLV ASSEMBLED IN MEXICO

**REGAL REGAL-BELOIT CORPORATION**

DESCRIPTION: MODEL-RFHP-42FR OUTLINE

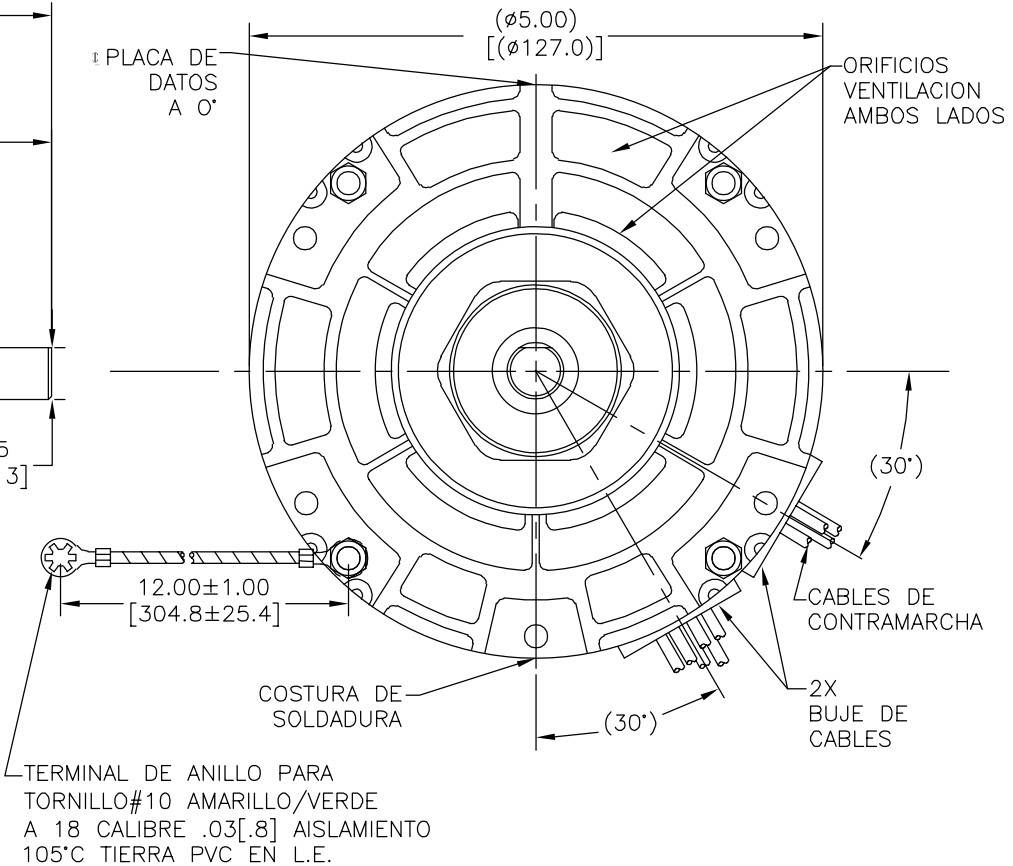
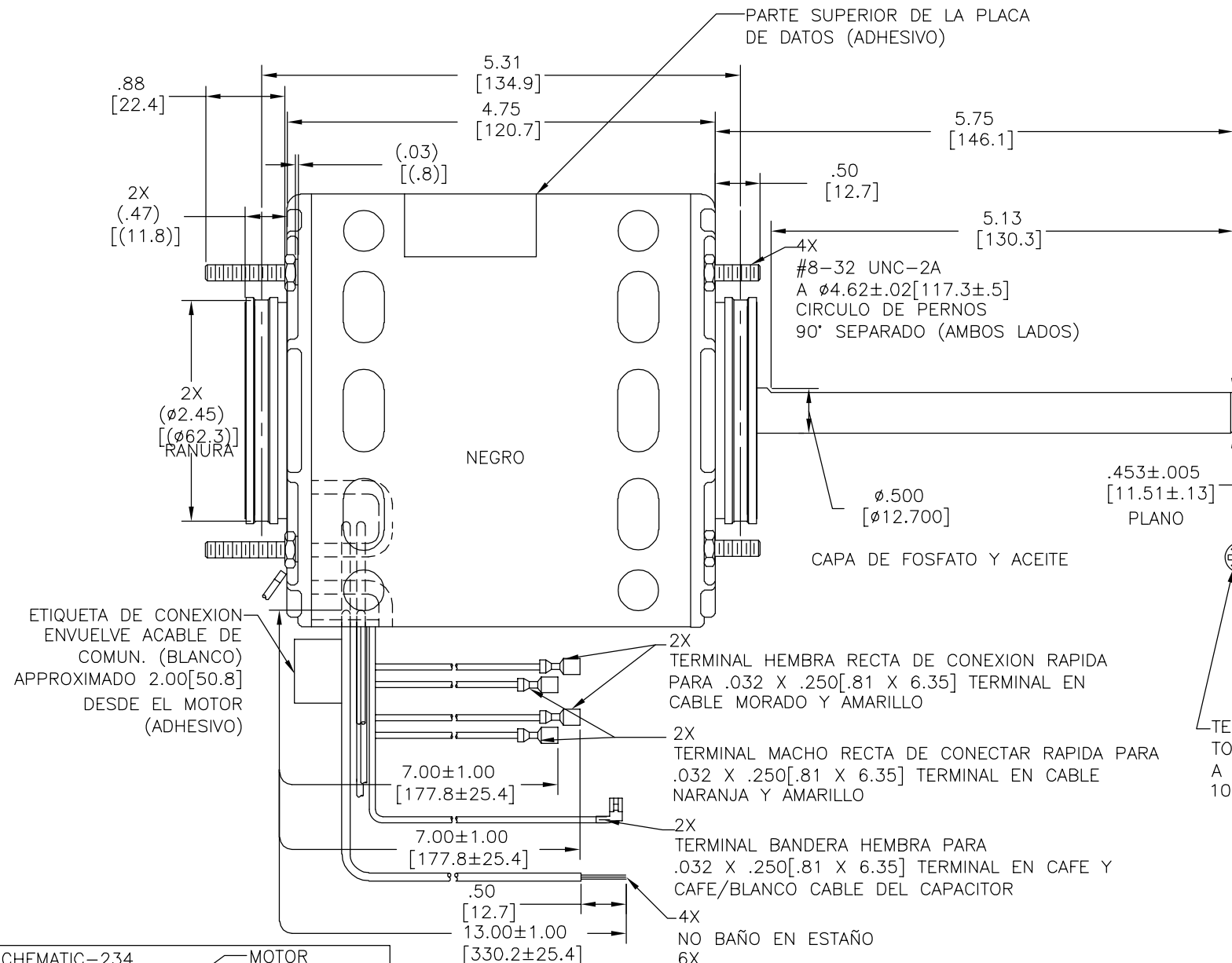
SIZE: C DWG NO: 9714

SCALE: NONE SHEET: 1

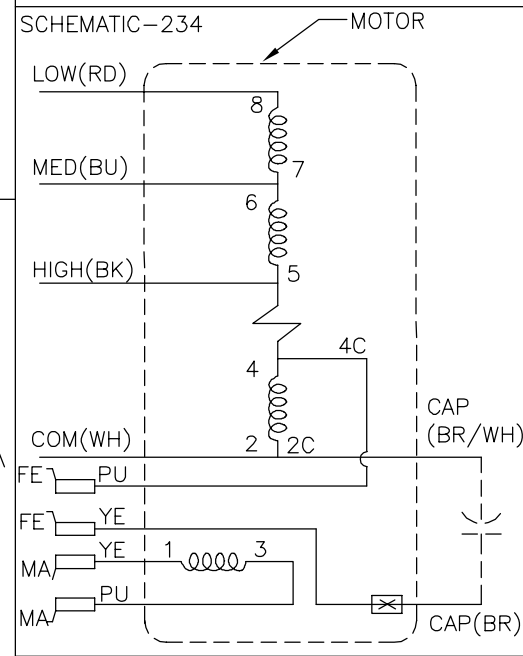
EL CLIENTE ES UNICAMENTE RESPONSABLE POR EL DESEMPEÑO DEL MOTOR Y APLICACIONES APROPIADAS PARA USO DE CLIENTE

REVISION:	ECO	REVISADO POR:	FECHA:	APROBADO POR:	FECHA:
C	0029019	I.ORTIZ	10-17-2012	M.AVILA	10-17-2012

JUEGO AXIAL .005[.13] MINIMO-.040[1.02] MAXIMO  
 OSCILAMIENTO MAXIMO EN FLECHA .001[.03] POR PULGADA  
 OSCILAMIENTO MAXIMO NO EXCEDERA DE .010[.25]



NOTA:  
 DISTRIBUCION: NUMERO DE PARTE CLIENTE: 9714  
 GRAINGER: NUMERO DE PARTE CLIENTE: 4UY18



ETIQUETA DE CONEXION 63T7433-107

CCWLE	INSERTAR CABLE AMARILLO A CABLE MORADO
CWLE	INSERTAR CABLE MORADO A CABLE MORADO

CARACTERISTICAS DE GEOMETRIA Y SIMBOLOS

- PLANICIDAD
- RECTITUD
- ∠ ANGULARIDAD
- ⊥ PERPENDICULARIDAD (A ESQUADRA)
- // PARALELISMO
- REDONDEZ (CIRCULARIDAD)
- ∅ CILINDRICIDAD
- ∩ PERFIL DE CUALQUIER SUPERFICIE
- ∩ PERFIL DE CUALQUIER LINEA
- ∩ VARIACION
- ∩ POSICION REAL
- ∩ CONCENTRICIDAD
- = SIMETRIA

ASME Y14.5M 1994

A MENOS QUE SE ESPECIFIQUE DE OTRA MANERA, LAS TOLERANCIAS DE LAS DIMS; SON LAS SIGUIENTES:

PULG	±.1	±.02	±.005	±.0005
mm	±0.5	±0.13	±0.013	

ANG. ±.50 GRADOS  
 ELIMINAR REBABAS Y ORILLAS FILOSAS DEL BORDE.  
 PULG .003-.015 mm 0.1-0.4  
 FILETEAR ESQUINA: PULG .020 mm 0.5  
 MAQUINAR SUPERFICIES  
 PULG 125 mm 3.2

ELECTRICAMENTE DE ACUERDO A MUESTRA 0442675B CURVE#32351

DIBUJADO POR: G.ALVIDREZ 07-26-2011

APROBADO POR:

TERCER ANGULO DE PROYECCION

FECHA EDS: 11-11-2011  
 REV. FORMATO: H

CONFIDENCIAL: ESTE DIBUJO Y SU INFORMACION SON PROPIEDAD DE USO EXCLUSIVO Y CONFIDENCIAL DE REGAL-BELOIT CORPORATION. Y NO DEBERAN SER REVELADOS, DUPLICADOS, DISTRIBUIDOS O USARSE DE OTRA MANERA SIN EL CONSENTIMIENTO ESCRITO DE REGAL-BELOIT CORPORATION. -TODOS LOS DERECHOS RESERVADOS.

ROT: REVERSIBLE

PLACA DE DATOS:

**Century** Tipp City, OH THERMALLY PROTECTED

SER. DATE & PO# PLT LTR MOD DE2G130N' STK. NO. SEE NOTE

VOLTS 115 HZ 60 AMPS 1.9

RPM 1625 SP3 PH1 CAP 5MFD/370VAC

INS CL B AMB40°C HP 1/6 AO ← ROT REV →

BRG SLV ASSEMBLED IN MEXICO

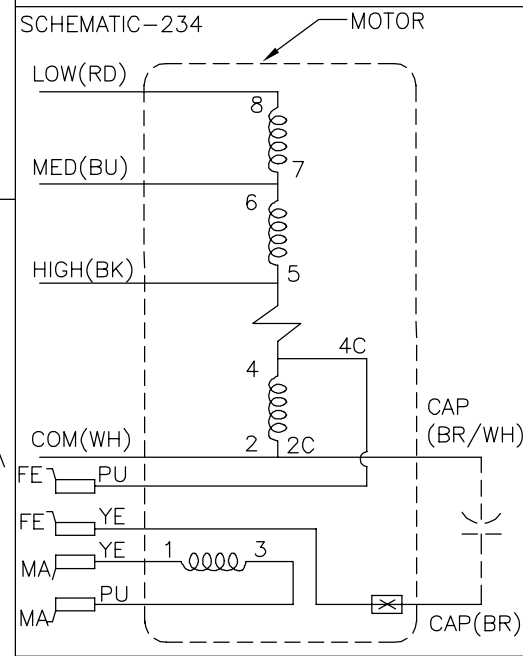
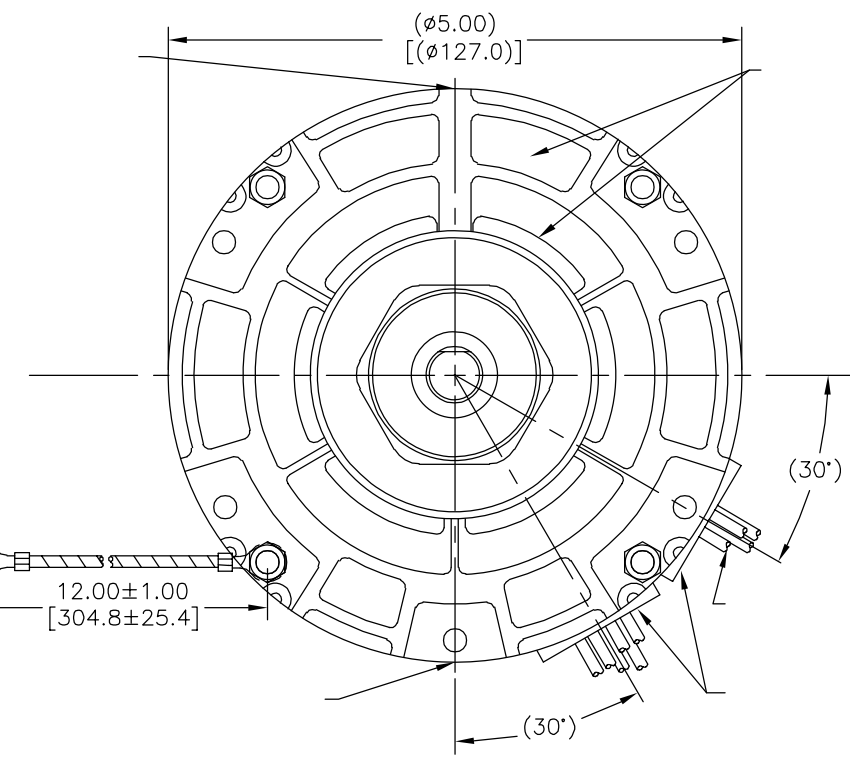
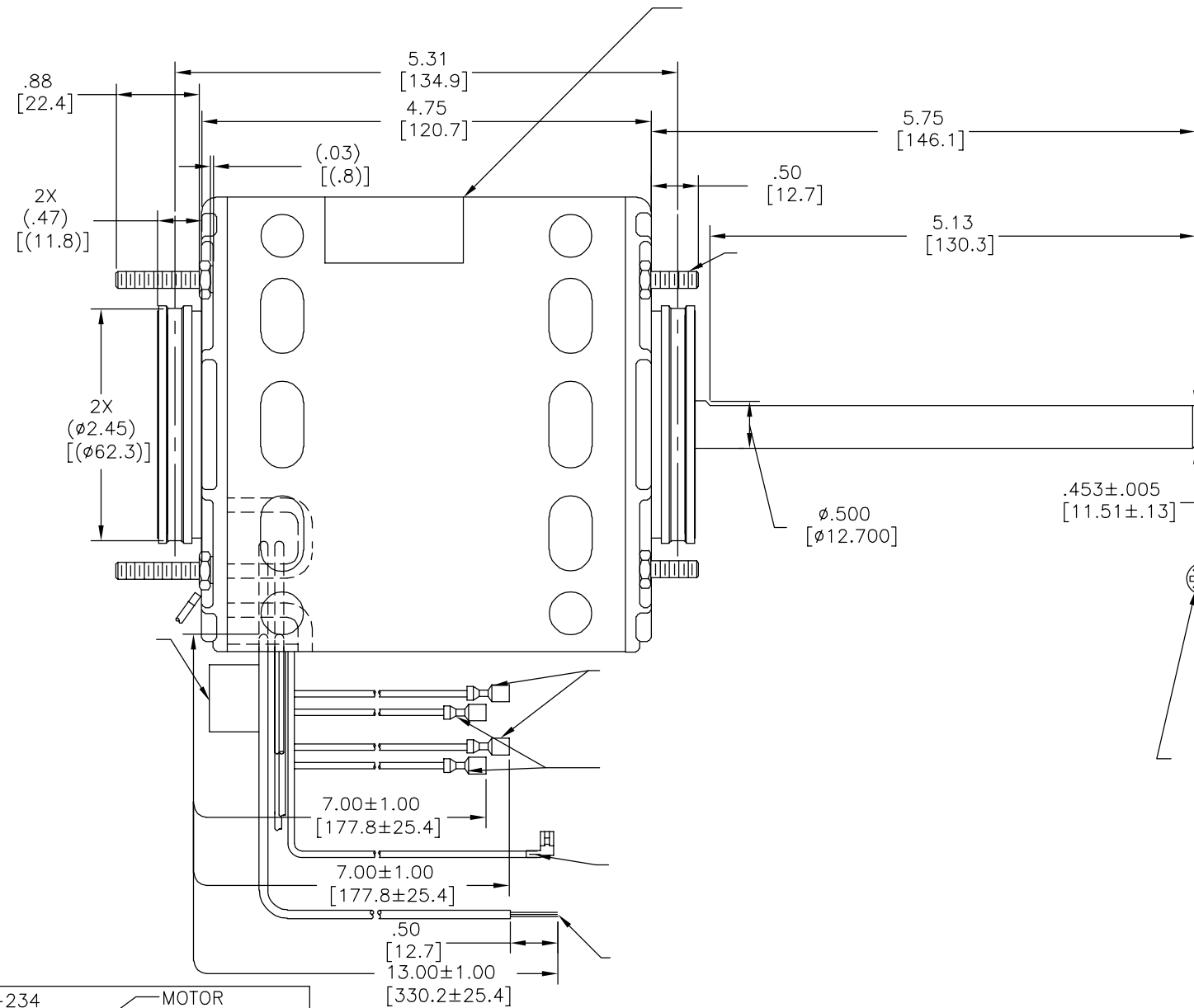
**REGAL** REGAL-BELOIT CORPORATION

DESCRIPCION: MODEL-RFHP-42FR OUTLINE

TAMAÑO: C NUMERO DE DIBUJO: 9714

ESCALA: NONE HOJA: 1

版本	ECO	编制	日期	批准	日期
C	0029019	I.ORTIZ	10-17-2012	M.AVILA	10-17-2012



CCWLE	
CWLE	

- 形位公差  
 □ 平面度  
 — 直线度  
 < 倾斜度  
 ⊥ 垂直度  
 // 平行度  
 ○ 圆度  
 ⊘ 圆柱度  
 ⌒ 面轮廓度  
 △ 线轮廓度  
 ⤴ 圆跳动  
 ⊕ 位置度  
 ⊙ 同轴度  
 ≡ 对称度

除另有注明  
 尺寸公差如下:  
 英寸 X XX XXX XXXX  
 毫米 ±0.1 ±0.02 ±0.005 ±0.0005  
 毫米 ±0.5 ±0.13 ±0.013  
 角度 ±.50 度  
 清理毛刺和尖棱  
 英寸 .003-.015 毫米 0.1-0.4  
 内圆角  
 英寸 .020 毫米 0.5  
 表面粗糙度  
 英制 125 米制 3.2  
 米制尺寸显示在 L ]

ASME Y14.5M 1994

ROT: REVERSIBLE

**Century** Tipp City, OH  
 THERMALLY PROTECTED

SER. DATE & PO# PLT LTR MOD DE2G130N' STK. NO. SEE NOTE  
 VOLTS 115 HZ 60 AMPS 1.9  
 RPM 1625 SP3 PH1 CAP 5MFD/370VAC  
 INS CL B AMB40°C HP 1/6 AO ← ROT REV →  
 BRG SLV ASSEMBLED IN MEXICO

绘图: G.ALVIDREZ 07-26-2011  
 批准:  
 第三角投影  
 机密: 本图纸及相关信息所有权归REGAL-BELOIT CORPORATION  
 未经REGAL-BELOIT CORPORATION书面授权, 不得泄露、  
 复制、传播或作其他用途。—版权所有

**REGAL REGAL-BELOIT CORPORATION**

名称: MODEL-RFHP-42FR  
 OUTLINE  
 图幅: C 图号: 9714  
 比例: NONE 页号: 1