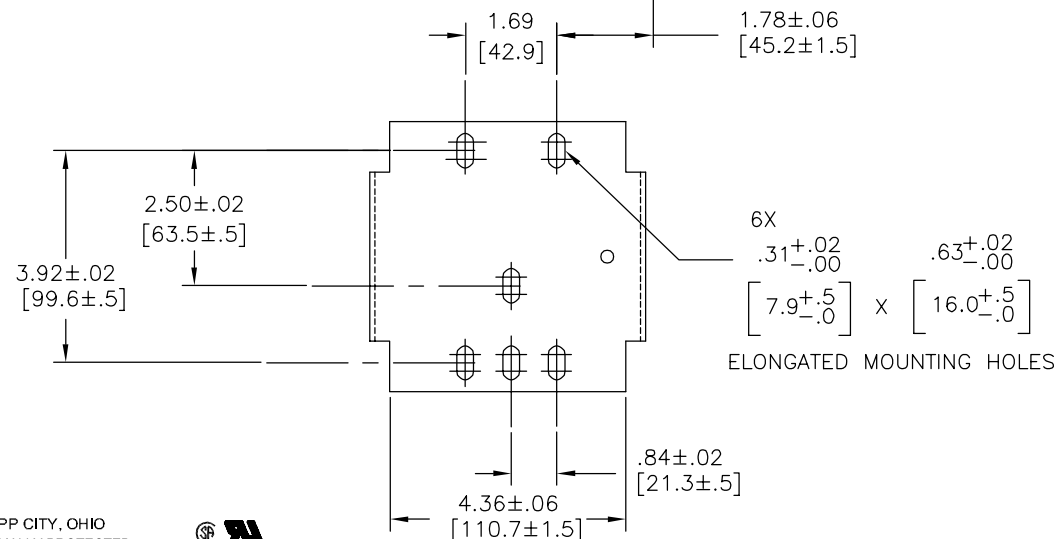
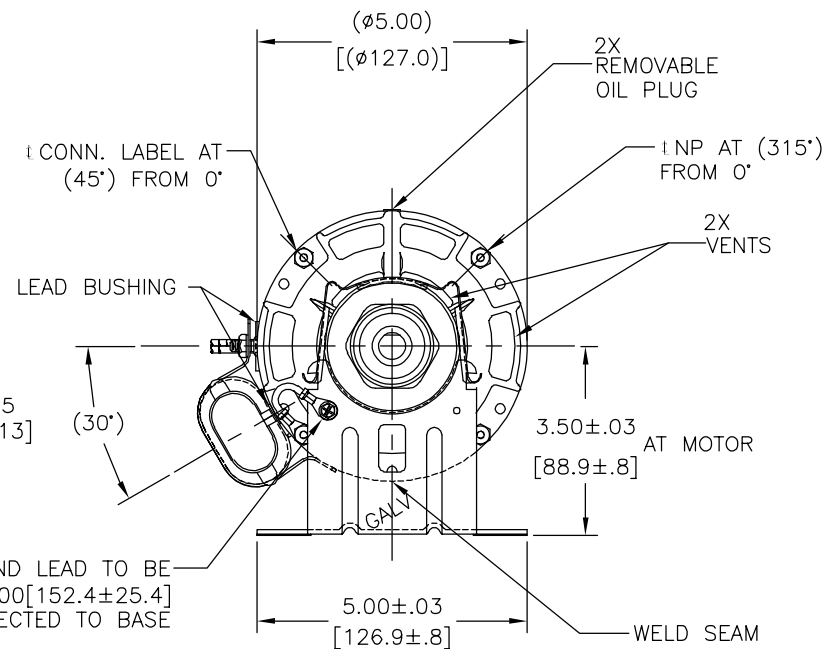
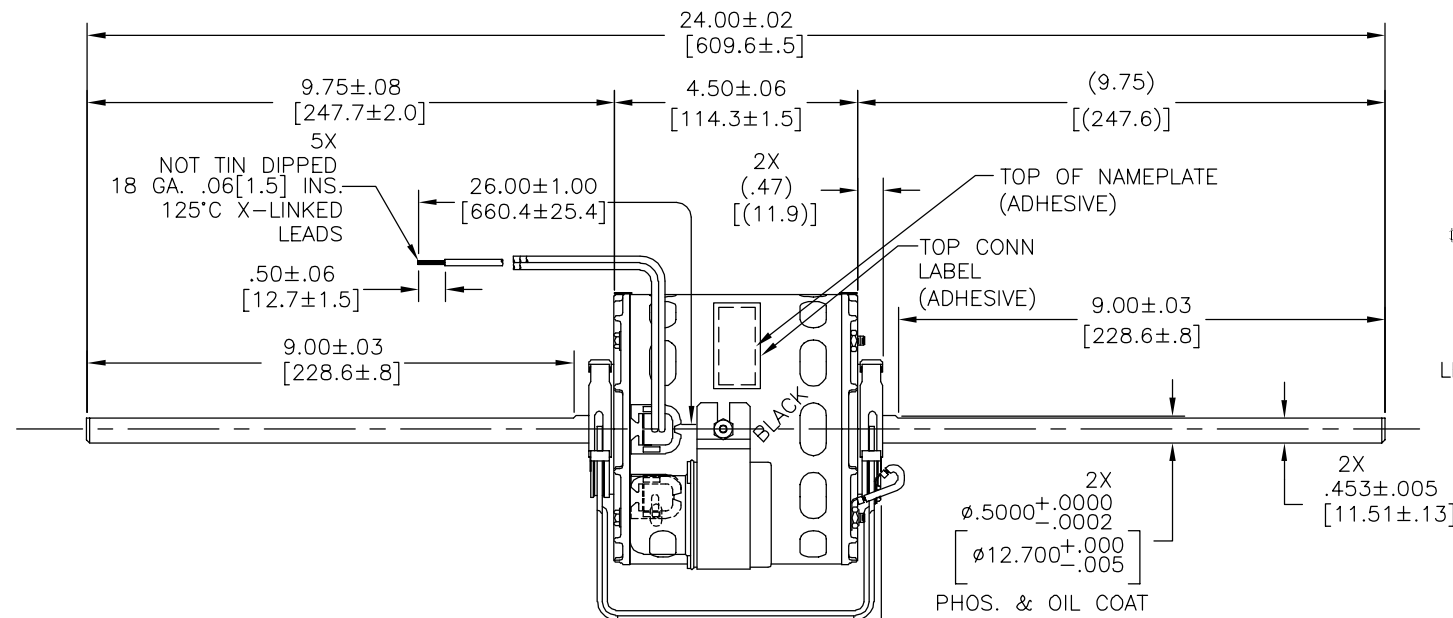


REV	ECO	REV BY	DATE	APPD	DATE
H	0029015	E.SINECIO	10-17-2012	G.ALVIDREZ	10-17-2012

CUSTOMER IS SOLELY RESPONSIBLE FOR
MOTOR PERFORMANCE AND SUITABILITY IN
APPLICATIONS FOR CUSTOMER'S USES.

ENDPLAY .005[.13] MIN - .040[1.02] MAX
MAXIMUM SHAFT RUN OUT .001[.03] PER INCH
MAXIMUM RUN OUT NOT TO EXCEED .0075[.191]



NAMEPLATE DATA:



TIPP CITY, OHIO
THERMALLY PROTECTED



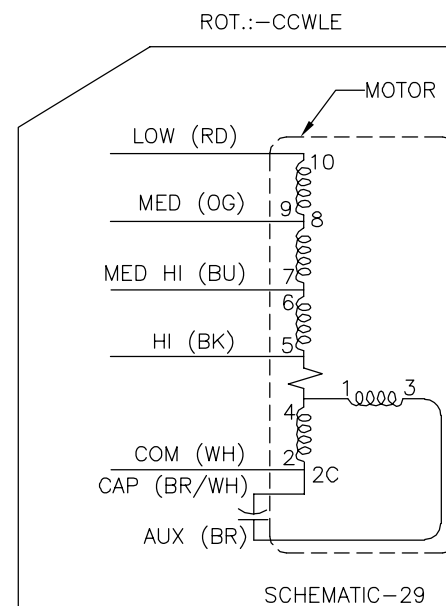
SER. DATE & PO# PLT LTR MOD DE2F103N' [-----]
VOLTS 115 HZ 60 AMPS
RPM 1625 SP4 PH1 CAP 5MFD 370VAC
INS CLB AMB 40°C HP CONT A0 ← ROT-←
BRG SLV ASSEMBLED IN MEXICO
BK-HIGH 2.2A 1/6HP
BU-MED HIGH 1.6A 1/8HP
OG-MED 1.1A 1/10HP RD-LOW 0.9A 1/15HP
WH-COM BR & BR/WH-CAP

SEE NOTE

NOTE:

- DISTRIBUTION: CUST. P/N: 9476A
- GRAINGER: CUST. P/N: 4UU22

ELECTRICALLY PER
SAMPLE S-9867E
PERFORMANCE CURVE
NO. C32335



GEOMETRIC CHARACTERISTICS & SYMBOLS
□ FLATNESS
— STRAIGHTNESS
∠ ANGULARITY
⊥ PERPENDICULARITY (SQUARENESS)
// PARALLELISM
○ ROUNDNESS (CIRCULARITY)
⊙ CYLINDRICITY
△ PROFILE OF ANY SURFACE
⌒ PROFILE OF ANY LINE
⌒ RUNOUT
⊕ TRUE POSITION
⊙ CONCENTRICITY
= SYMMETRY

ASME Y14.5M 1994

REGAL-BELOIT CORPORATION (RBC)
PROVIDES TECHNICAL ASSISTANCE TO
OUR CUSTOMERS IN SEVERAL AREAS.
SINCE RBC DOES NOT RECEIVE ALL
DATA CONCERNING THE USE AND
APPLICATION OF THE MOTOR, THE
SUITABILITY OF THE MOTOR FOR THE
APPLICATION MUST BE DETERMINED BY
THE CUSTOMER.

DIMENSIONS WITHOUT TOLERANCES ARE
FOR REFERENCE ONLY.

DR BY:

J.RUPER

APPD:

.

THIRD ANGLE PROJECTION

EDS DATE 11-11-2011

FORMAT REV H

CONFIDENTIAL: THIS DRAWING AND ITS INFORMATION ARE
THE EXCLUSIVE AND CONFIDENTIAL PROPERTY OF REGAL-
BELOIT CORPORATION AND ARE NOT TO BE DISCLOSED,
DUPLICATED, DISTRIBUTED OR OTHERWISE USED WITHOUT
THE WRITTEN CONSENT OF REGAL-BELOIT CORPORATION.
-ALL RIGHTS RESERVED.

08-31-2004



REGAL-BELOIT CORPORATION

DESCRIPTION

MODEL-RFHP-42FR
OUTLINE

SIZE

C

DWG NO

9476A

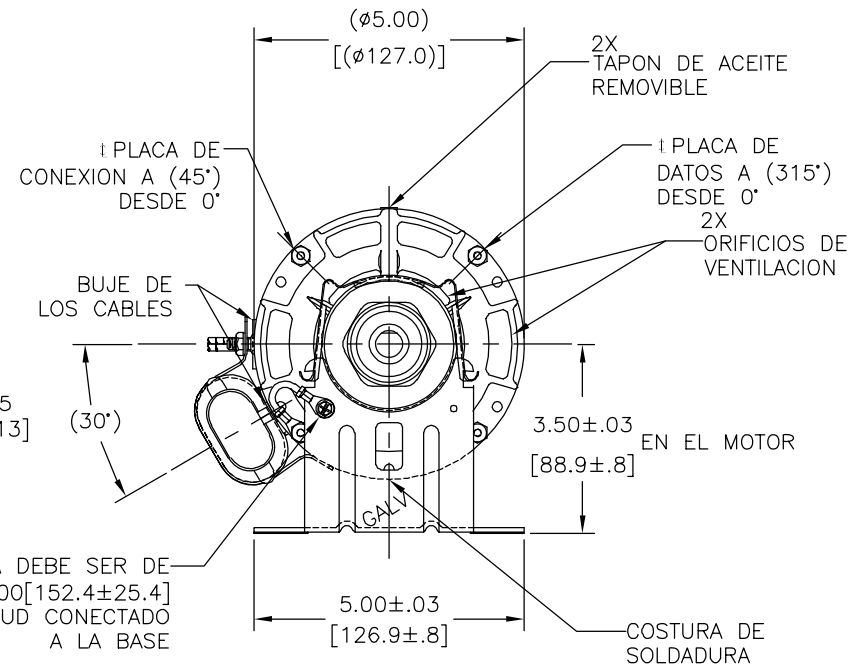
SCALE

NONE

SHEET

1

JUEGO AXIAL DE .005[.13] MIN - .040[1.02] MAX
MAX. OSCILACION DE FLECHA DE .001[.03] POR PULG. MAX.
LA OSCILACION NO DEBE EXCEDER .0075[.191]



TIPP CITY, OHIO
THERMALLY PROTECTED

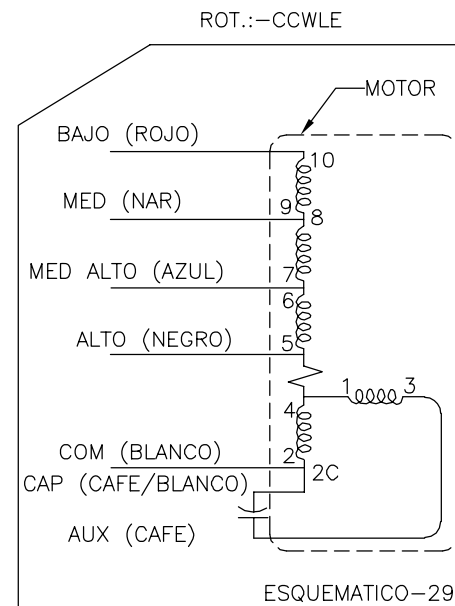



— VER NOTA

NOTA:

1. DISTRIBUCION: CLIENTE N/P: 9476A
2. GRAINGER: CLIENTE N/P: 4UU22

ELECTRICAMENTE DE
ACUERDO A LA MUESTRA
S-9867E CURVA DE DESEMPEÑO
NO. C32335



CARACTERISTICAS DE GEOMETRIA Y SIMBOLOS ▣ PLANICIDAD — RECTITUD ⊥ ANGULARIDAD ⊥ PERPENDICULARIDAD (A ESCUADRA) // PARALELISMO ○ REDONDEZ (CIRCULARIDAD) ∅ CILINDRICIDAD ∩ PERFIL DE CUALQUIER SUPERFICIE ∩ PERFIL DE CUALQUIER LINEA ↗ VARIACION ⊕ POSICION REAL ⊗ CONCENTRICIDAD ∩ SIMETRIA	REGAL-BELOIT CORPORATION (RBC) PROVEE ASISTENCIA TECNICA A NUESTROS CLIENTES EN VARIAS AREAS. DESDE QUE RBC NO RECIBE TODOS LOS DATOS EN RELACION AL USO Y A LA APLICACION DEL MOTOR, LA APLICACION ADECUADA DEL MOTOR DEBE SER DETERMINADA POR EL CLIENTE.	DIBUJADO POR: J. RUPER	08-31-2004	<div style="display: flex; align-items: center;"> <div style="background-color: black; color: white; padding: 5px; margin-right: 10px;"> REGAL </div> <div> REGAL-BELOIT CORPORATION </div> </div>
		APROBADO POR: .	.	DESCRIPCION: <div style="text-align: center; font-size: 1.2em;"> MODEL-RFHP-42FR OUTLINE </div>
		TERCER ANGULO DE PROYECCION	<div style="text-align: center;">  </div>	<div style="display: flex; justify-content: space-between;"> <div>FECHA EDS: 11-11-2011</div> <div>REV. FORMATO: H</div> </div>
		CONFIDENCIAL: ESTE DIBUJO Y SU INFORMACION SON PROPIEDAD DE USO EXCLUSIVO Y CONFIDENCIAL DE REGAL-BELOIT CORPORATION. Y NO DEBERAN SER REVELADOS, DUPLICADOS, DISTRIBUIDOS O USARSE DE OTRA MANERA SIN EL CONSENTIMIENTO ESCRITO DE REGAL-BELOIT CORPORATION. -TODOS LOS DERECHOS RESERVADOS.		<div style="display: flex; justify-content: space-between;"> <div> TAMAÑO: C </div> <div> NUMERO DE DIBUJO: 9476A </div> </div>
ASME Y14.5M 1994	DIMENSIONES SIN TOLERANCIA SON DE REFERENCIA SOLAMENTE			<div style="display: flex; justify-content: space-between;"> <div>ESCALA: NONE</div> <div>HOJA: 1</div> </div>

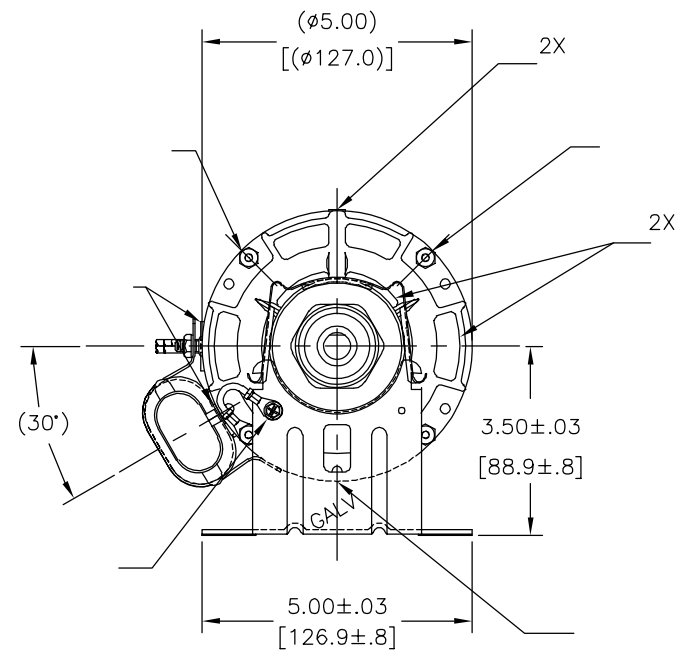
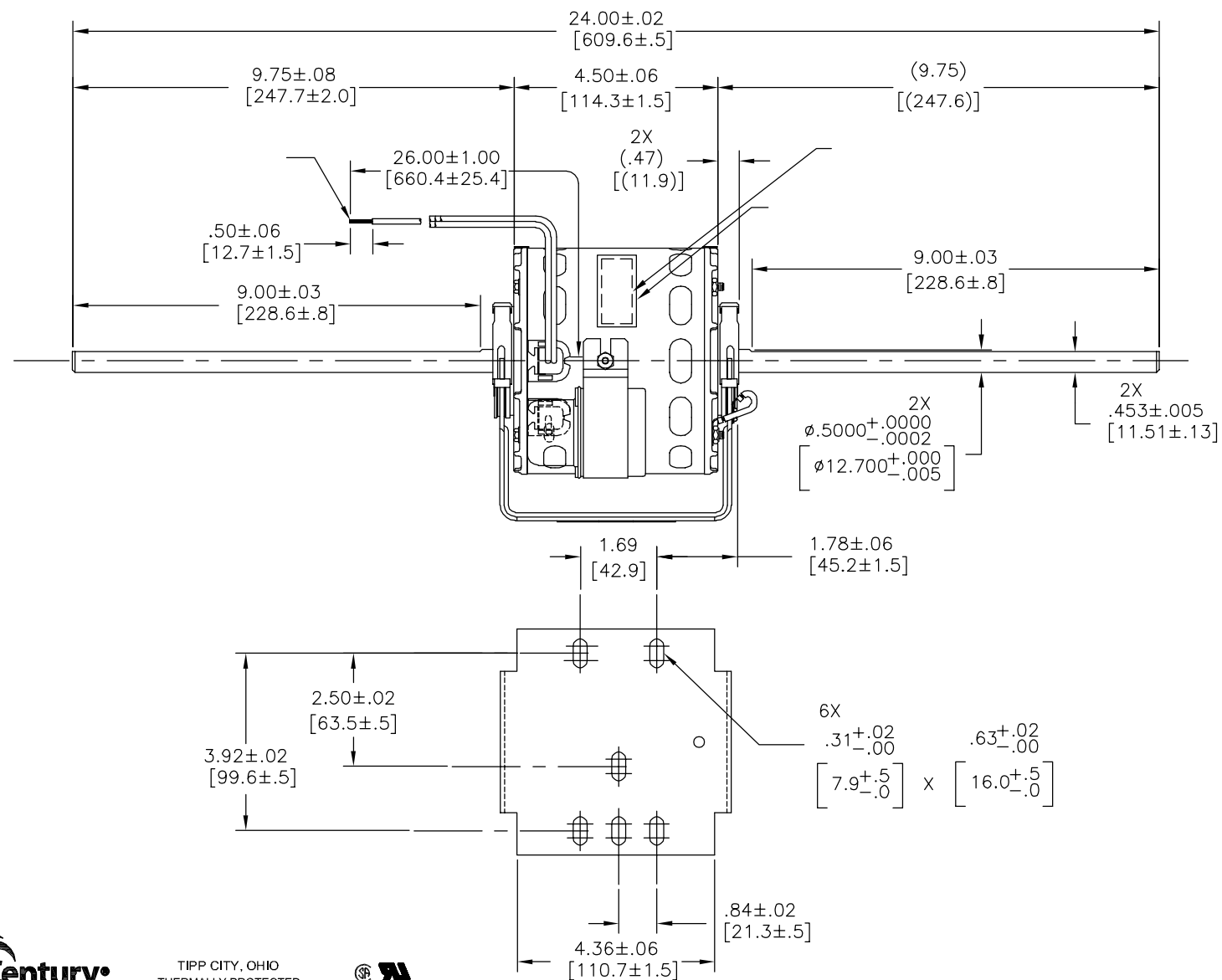
4

3

2

1

版本	ECO	编制	日期	批准	日期
H	0029015	E.SINECIO	10-17-2012	G.ALVIDREZ	10-17-2012



TIPP CITY, OHIO
THERMALLY PROTECTED



SER. DATE & PO# PLT LTR MOD DE2F103N' [-----]
VOLTS 115 HZ 60 AMPS
RPM 1625 SP4 PH1 CAP 5MFD 370VAC
INS CLB AMB 40°C HP CONT A0 ← ROT →
BRG SLV ASSEMBLED IN MEXICO
BK-HIGH 2.2A 1/6HP
BU-MED HIGH 1.6A 1/8HP
OG-MED 1.1A 1/10HP RD-LOW 0.9A 1/15HP
WH-COM BR & BR/WH-CAP

形位公差
□ 平面度
— 直线度
∠ 倾斜度
⊥ 垂直度
∥ 平行度
○ 圆度
⊙ 圆柱度
⌒ 面轮廓度
— 线轮廓度
⌒ 圆跳动
⊕ 位置度
⊙ 同轴度
= 对称度

ASME Y14.5M 1994

REGAL-BELOIT CORPORATION
(RBC) 在个别领域为客户
提供技术支持。鉴于 RBC
未收到任何涉及电机使用和
应用环境的数据，电机的适用性
由客户自己决定。

未注公差尺寸仅供参考。

绘图: J.RUPER 08-31-2004
批准: .
第二角投影
图纸格式发布日期 11-11-2011
图纸格式版本 H
机密: 本图纸及相关信息所有权归REGAL-BELOIT CORPORATION。
未经REGAL-BELOIT CORPORATION书面授权，不得泄露、
复制、传播或作其他用途。—版权所有

REGAL REGAL-BELOIT CORPORATION

MODEL-RFHP-42FR
OUTLINE

图幅 C 图号 9476A
比例 NONE 页号 1