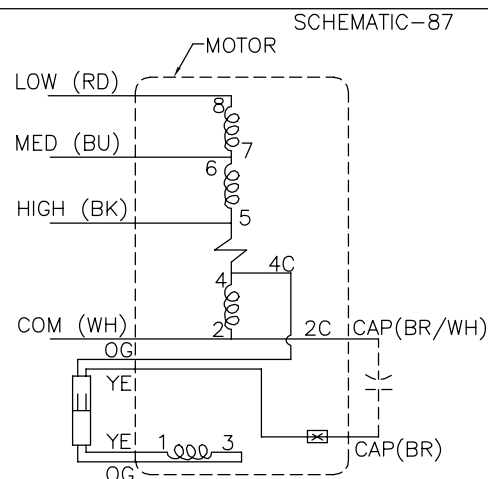
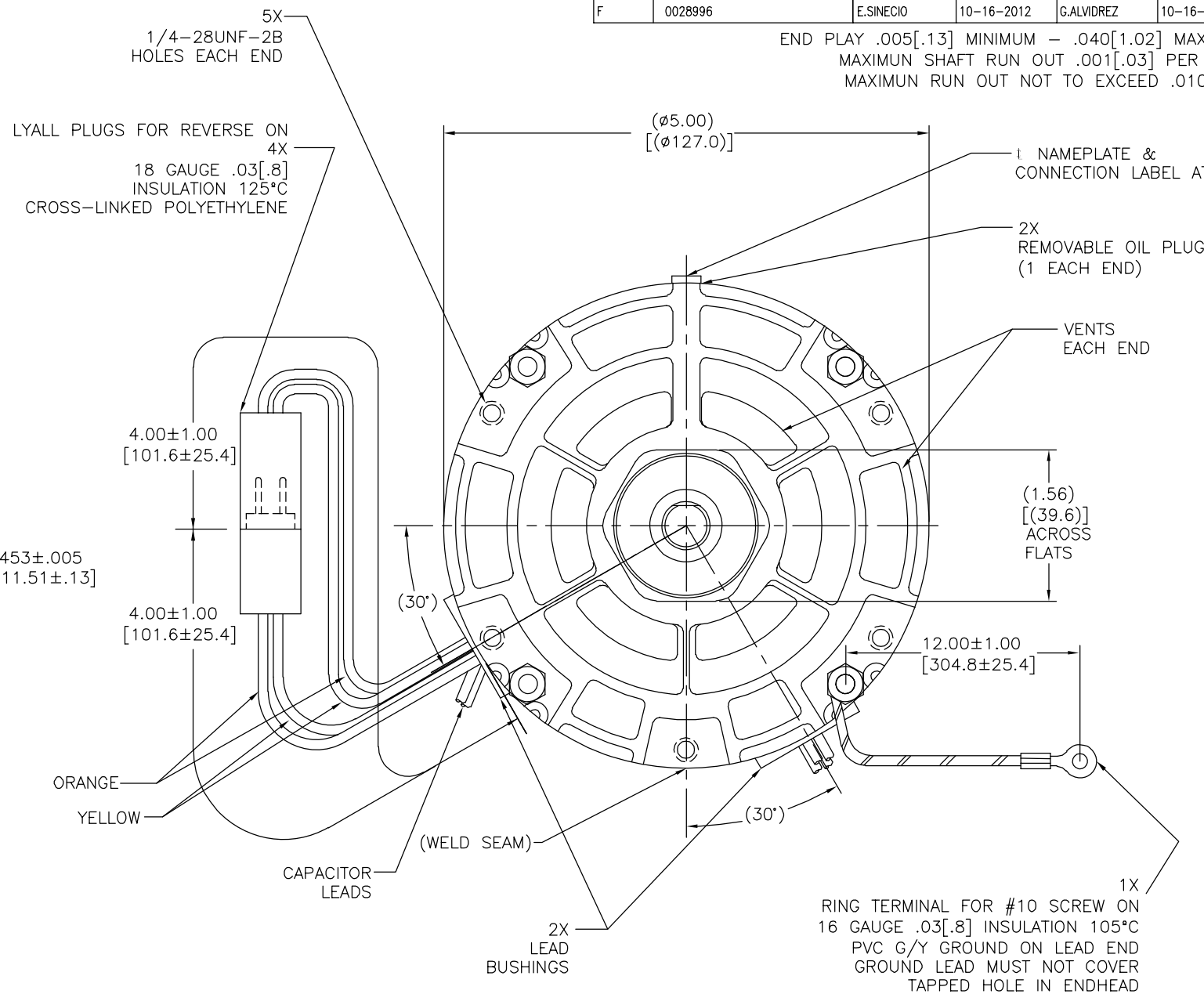
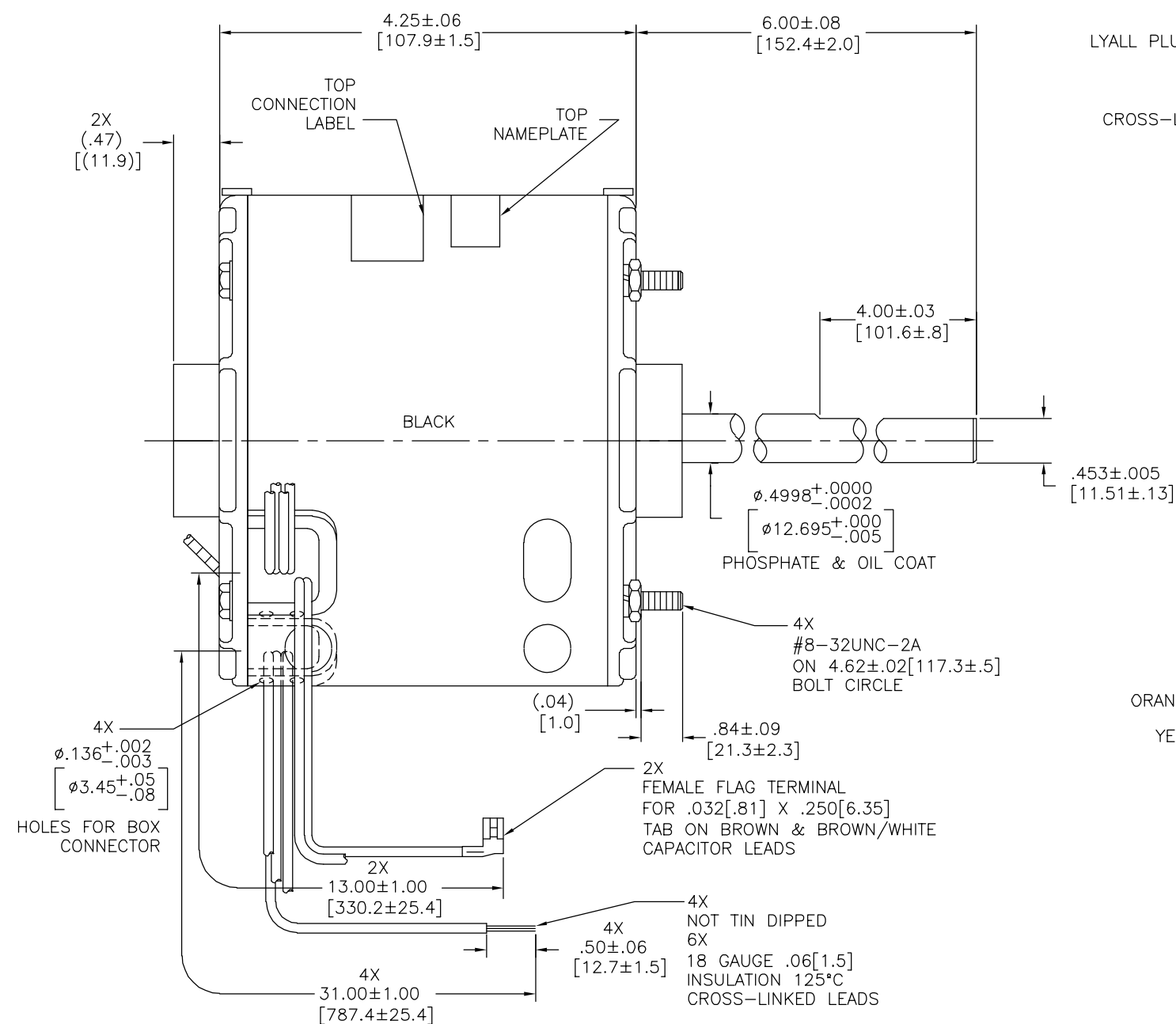


# Uncontrolled Copy

CUSTOMER IS SOLELY RESPONSIBLE FOR MOTOR PERFORMANCE AND SUITABILITY IN APPLICATIONS FOR CUSTOMER'S USES.

REV	ECO	REV BY	DATE	APPD	DATE
F	0028996	E.SINECIO	10-16-2012	G.ALVIDREZ	10-16-2012

END PLAY .005[.13] MINIMUM - .040[1.02] MAXIMUM  
MAXIMUM SHAFT RUN OUT .001[.03] PER INCH  
MAXIMUM RUN OUT NOT TO EXCEED .010[.25]



SHIP SEPARATE  
72T7176A-35  
BAG ASSEMBLY

MOTOR CONNECTED FOR  
CWLE ROTATION


CONNECTION LABEL  
63T7432-18

ELECTRICALLY PER  
SAMPLE S-8319D

GEOMETRIC CHARACTERISTICS & SYMBOLS	
	FLATNESS
	STRAIGHTNESS
	ANGULARITY
	PERPENDICULARITY (SQUARENESS)
	PARALLELISM
	ROUNDNESS (CIRCULARITY)
	CYLINDRICITY
	PROFILE OF ANY SURFACE
	PROFILE OF ANY LINE
	RUNOUT
	TRUE POSITION
	CONCENTRICITY
	SYMMETRY

ASME Y14.5M, 1994

UNLESS OTHERWISE SPECIFIED  
DIM. TOLERANCES ARE AS FOLLOWS:  
INCH  $\begin{matrix} X & XX & XXX & XXXX \\ \pm .1 & \pm .02 & \pm .005 & \pm .0005 \end{matrix}$   
mm  $\begin{matrix} \\ \pm .5 & \pm .13 & \pm .013 \end{matrix}$   
ANG.  $\pm .50$  DEG  
REMOVE BURRS & BREAK SHARP EDGE  
INCH .003-.015 mm 0.1-0.4  
CORNER FILLETS TO:  
INCH .020 mm 0.5  
MACHINE SURFACES:  
INCH  $\begin{matrix} 125 \\ \sqrt{\phantom{x}} \end{matrix}$  mm  $\begin{matrix} 3.2 \\ \sqrt{\phantom{x}} \end{matrix}$   
METRIC DIMS. SHOWN IN [BRACKETS]

DR BY:	TLB	12-07-2000
APPD:	DRB	12-08-2000
THIRD ANGLE PROJECTION		EDS DATE 11-11-20 FORMAT REV H
<p>CONFIDENTIAL: THIS DRAWING AND ITS INFORMATION ARE THE EXCLUSIVE AND CONFIDENTIAL PROPERTY OF REGAL-BELOIT CORPORATION AND ARE NOT TO BE DISCLOSED, REPRODUCED, COPIED, REPRODUCED, OR OTHERWISE USED WITHOUT THE WRITTEN CONSENT OF REGAL-BELOIT CORPORATION</p> <p>-ALL RIGHTS RESERVED.</p>		

**REGAL** **REGAL-BELOIT CORPORATION**

1	DESCRIPTION	MODEL-RFHP-42FR OUTLINE
---	-------------	----------------------------

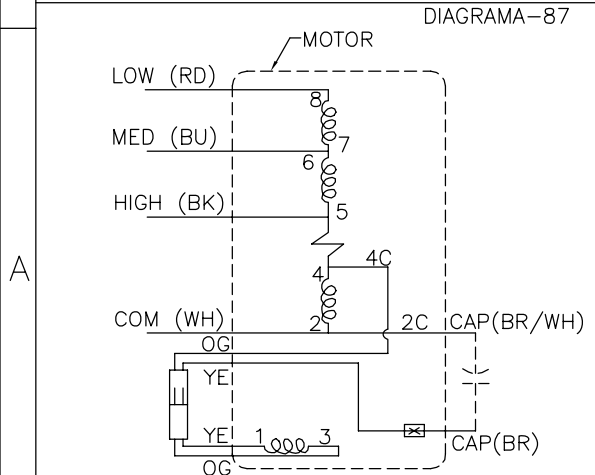
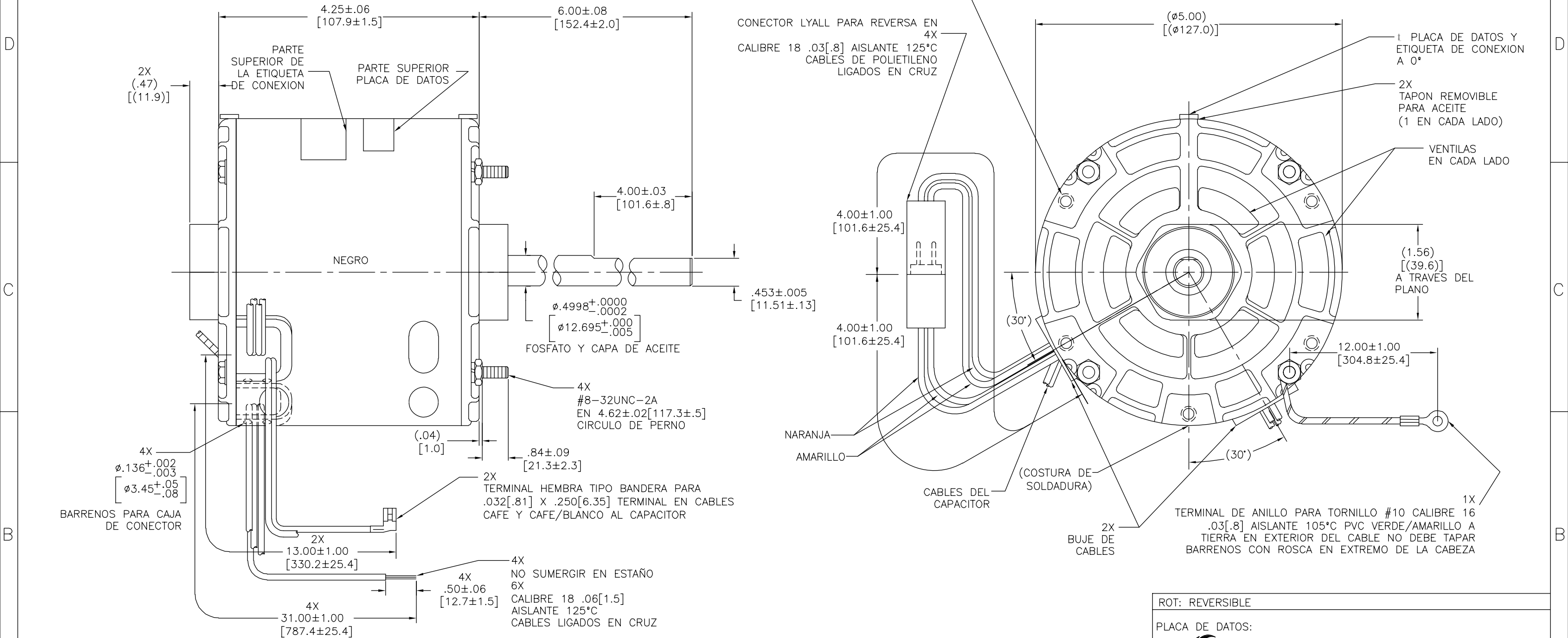
SIZE	D	DWG NO	DE3H7017
------	---	--------	----------

SCALE NONE	SHEET 1
------------	---------

EL CLIENTE ES EXCLUSIVAMENTE RESPONSABLE PARA EL DESEMPEÑO DEL MOTOR Y ADECUADO EN APLICACIONES AL USO DE LOS CLIENTES.

REVISION:	ECO	REVISADO POR:	E.SINECIO	FECHA:	10-16-2012	APROBADO POR:	G.ALVIDREZ	FECHA:	10-16-2012
F	0028996								

JUEGO AXIAL .005[.13] MINIMO - .040[1.02] MAXIMO.  
MAXIMA OSCILACION DE FLECHA .001[.03] POR PULGADA.  
MAXIMA OSCILACION NO DEBE EXCEDER .010[.25]



EMBARCAR SEPARADO  
72T7176A-35  
ENSAMBLE EN BOLSA  
MOTOR CONECTADO PARA  
ROTACION CWLE

CCWLE	CLAVIJA EN CABLE AMARILLO A CABLE NARANJA
CWLE	CLAVIJA EN CABLE NARANJA A CABLE NARANJA

ETIQUETA DE CONEXION  
63T7432-18

ELECTRICAMENTE  
DE ACUERDO A  
MUESTRA S-8319D

CARACTERISTICAS DE GEOMETRIA Y SIMBOLOS	A MENOS QUE SE ESPECIFIQUE DE OTRA MANERA, LAS TOLERANCIAS DE LAS DIMS, SON LAS SIGUIENTES:	DIBUJADO POR:	12-07-2000
— RECTITUD	X XX XXX XXXX	APROBADO POR:	12-08-2000
— ANGULARIDAD	PULG ±.1 ±.02 ±.005 ±.0005	TERCER ANGULO DE PROYECCION	FECHA EDS: 11-11-2011
— PERPENDICULARIDAD (A ESCUADRA)	mm ±0.5 ±0.13 ±0.013	REV. FORMATO:	H
— PARALELISMO	ANG. ±50 GRADOS	CONFIDENCIAL: ESTE DIBUJO Y SU INFORMACION SON PROPIEDAD DE USO EXCLUSIVO Y CONFIDENCIAL DE REGAL-BELOIT CORPORATION. Y NO DEBERAN SER REVELADOS, DUPLICADOS, DISTRIBUIDOS O USARSE DE OTRA MANERA SIN EL CONSENTIMIENTO ESCRITO DE REGAL-BELOIT CORPORATION. -TODOS LOS DERECHOS RESERVADOS.	
— REDONDEZ (CIRCULARIDAD)	ELIMINAR REBABAS Y ORILLAS FILOSAS DEL BORDE.		
— CILINDRICIDAD	PULG .003-.015 mm 0.1-0.4		
— PERFIL DE CUALQUIER SUPERFICIE	FILETEAR ESQUINA: PULG .020 mm 0.5		
— VARIACION	MAQUINAR SUPERFICIES		
— POSICION REAL	PULG .125 mm 3.2		
— CONCENTRICIDAD			
— SIMETRIA			

ASME Y14.5M 1994 DIMS METRICAS MOSTRADAS [PARENTESIS]

ROT: REVERSIBLE

PLACA DE DATOS:



Tipp City, OH  
THERMALLY PROTECTED



SER. DATE & PO# PLT LTR MOD: DE3H017N STOCK NO. 390  
VOLTS 115 HZ 60 AMPS 3.7  
RPM 1050 SP PH1 CAP 7.5MFD 370VAC  
INS CL AMB °C HP 1/4 CONT AO ←ROT REV→  
BRG SLV  
BK-HIGH 3.7A 1/4HP  
BU-MED 3.1A 1/5HP  
RD-LOW 2.4A 1/7HP  
WH-COM BR & BR/WH-CAP

ASSEMBLED IN MEXICO

REGAL REGAL-BELOIT CORPORATION

DESCRIPCION:

MODEL-RFHP-42FR  
OUTLINE

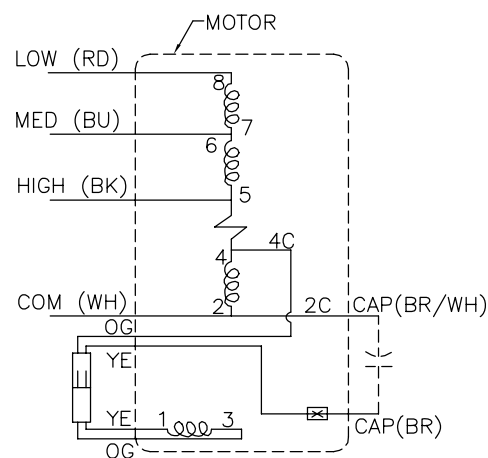
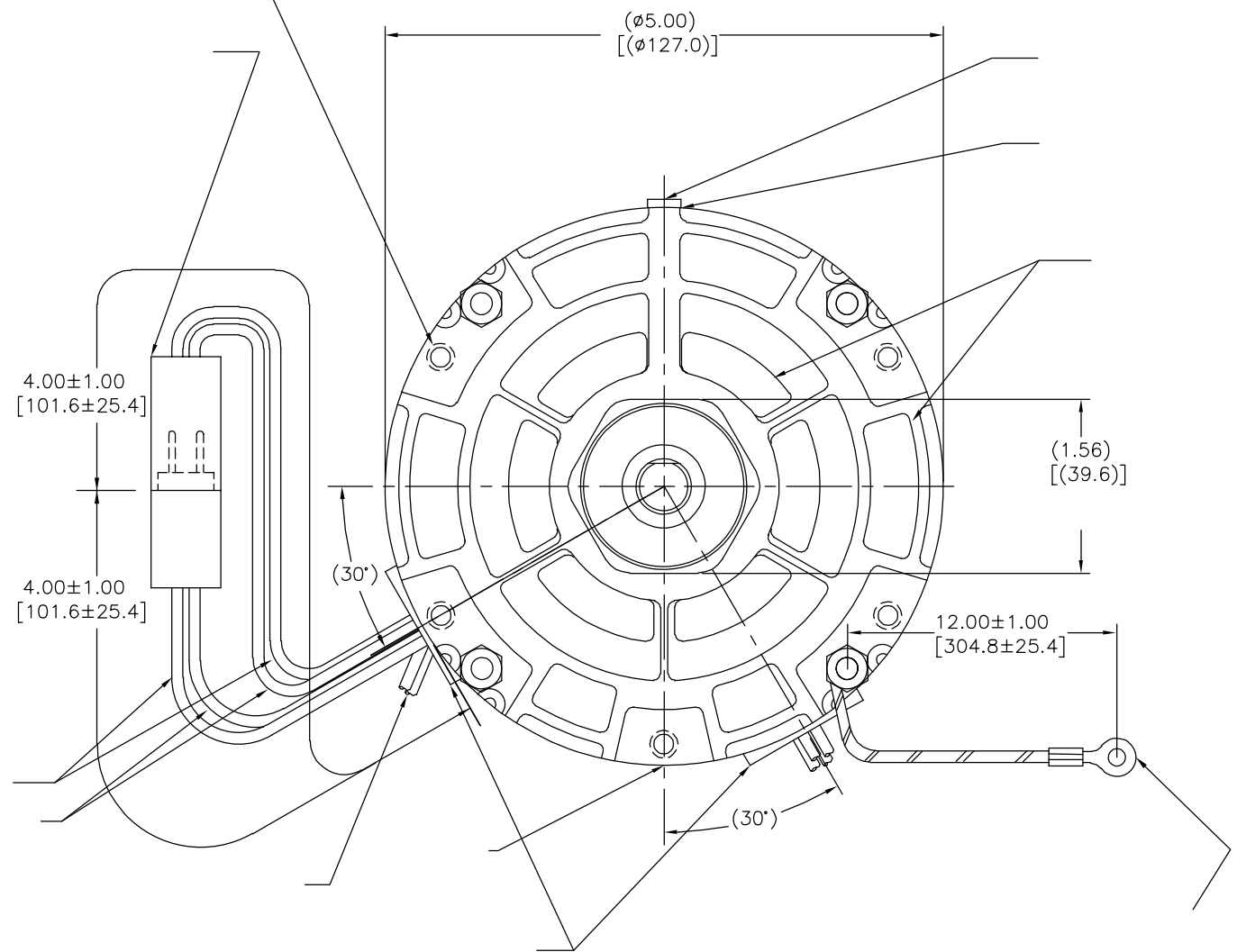
TAMAÑO: D

NUMERO DE DIBUJO:  
DE3H7017

ESCALA: NONE

HOJA: 1

版本	ECO	编制	日期	批准	日期
F	0028996	E.SINECIO	10-16-2012	G.ALVIDREZ	10-16-2012

ROT: REVERSIBLE

Tipp City, OH  
THERMALLY PROTECTED



SER. DATE & PO# PLT LTR MOD: DE3H017N STOCK NO. 390  
VOLTS 115 HZ 60 AMPS 3.7  
RPM 1050 SP PH1 CAP 7.5MFD 370VAC  
INS CL AMB °C HP 1/4 CONT AO ←ROT REV→  
BRG SLV  
BK-HIGH 3.7A 1/4HP ASSEMBLED IN MEXICO  
BU-MED 3.1A 1/5HP  
RD-LOW 2.4A 1/7HP  
WH-COM BR & BR/WH-CAP


形位公差		
□	平面	度
⊥	垂直	度
∠	倾斜	度
	平行	度
○	圆	度
⌀	圆柱	度
⌒	圆锥	度
⌒	线轮廓	度
⌒	面轮廓	度
⌒	跳动	
⊕	位置	度
⊗	同轴	度
≡	对称	度


ASME Y14.5M 1994

除另有注明  
尺寸公差如下:

	X	XX	XXX	XXXX
英寸	±.1	±.02	±.005	±.0005
毫米	±0.5	±0.13	±0.013	
角度	±.50			
清理毛刺和尖棱				
英寸	.003-.015		毫米	0.1-0.4
内圆角				
英寸	.020	毫米	0.5	
表面粗糙度				
英制	125	米制	3.2	

米制尺寸显示在 [ ]

绘图:	TLB	12-07-2000
批准:	DRB	12-08-2000
第三角投影		<div>图纸格式发布日期 11-11-2011</div> <div>图纸格式版本 H</div>
<p>机密: 本图纸及相关信息所有权归REGAL-BELOIT CORPORATION          未经REGAL BELOIT CORPORATION书面授权, 不得泄露、          复制、传播或作其他用途。 一版版权所有</p>		

 <b>REGAL-BELOIT CORPORATION</b>		
名称		
MODEL-RFHP-42FR OUTLINE		
图番	图号	
D	DE3H7017	
比例	NONE	页号 1