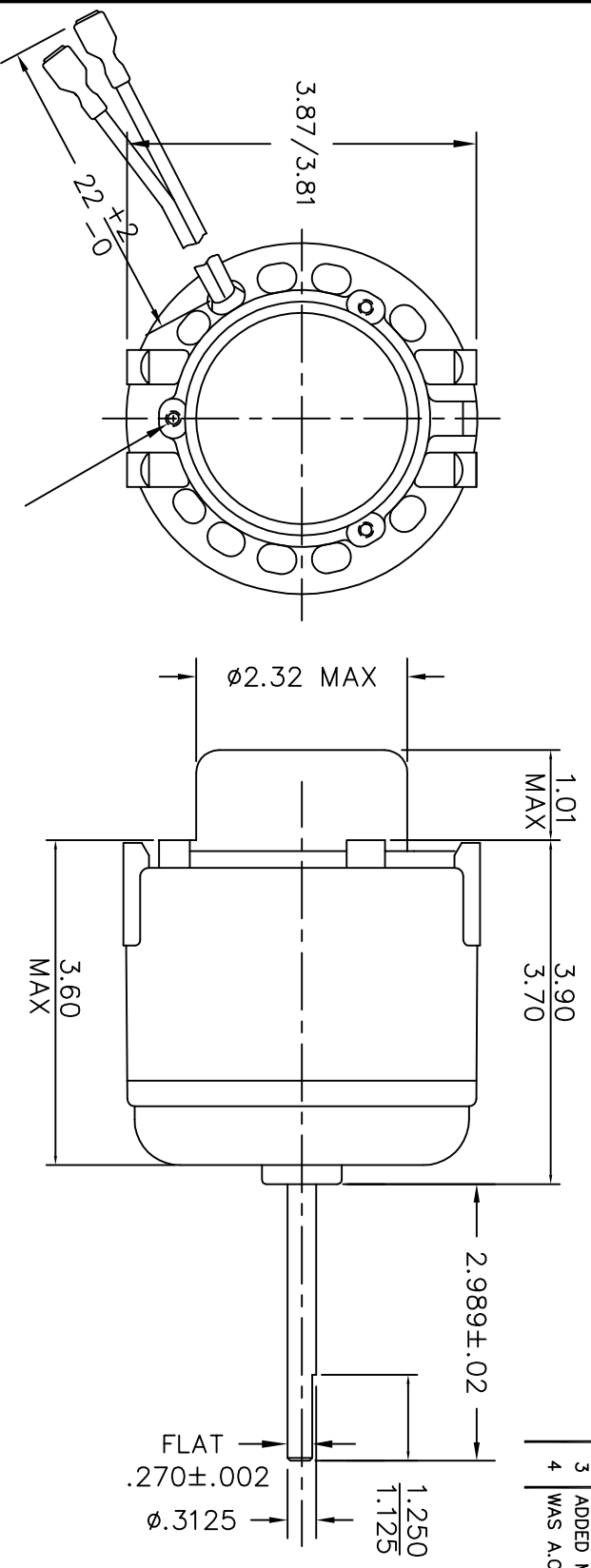


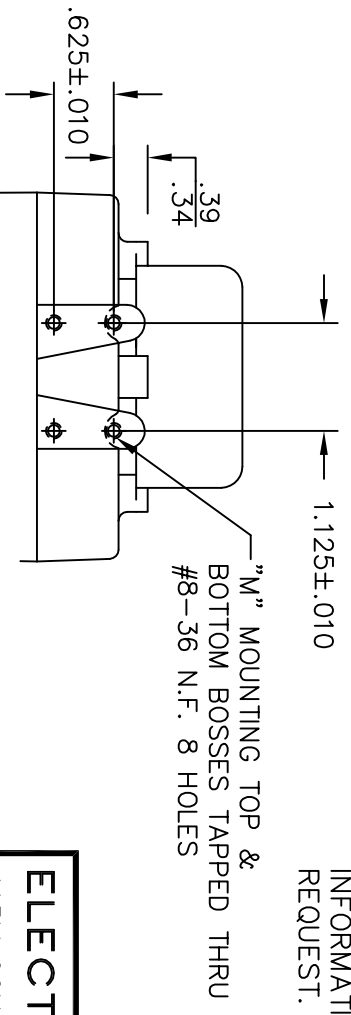
NO. A-23571

| NO. | REVISIONS | DATE AND SIGNATURE |
|-----|------------------------|--------------------|
| 1 | CUST NAME WAS MAGNETEK | 6-7-02 |
| 2 | REMOVED 60/50HZ | 6-11-02 |
| 3 | ADDED MAX DIM'S | 2-6-04 |
| 4 | WAS A.O. SMITH | 8-31-11 |



3 #8-36 TAPPED HOLES
SPACED 120° APART ON A
2.813 DIA. CENTER LINE.

OUTLINE DIMENSIONS ON WHICH NO LIMIT IS SPECIFIED ARE
NOMINAL AND NOT GUARANTEED AS TO TOLERANCE. ADDITIONAL
INFORMATION ON TOLERANCE WILL BE FURNISHED ON SPECIFIC
REQUEST.



"M" MOUNTING TOP &
BOTTOM BOSSES TAPPED THRU
#8-36 N.F. 8 HOLES

TOLERANCE
.0000=±.0002 .000=±.005
.00=±.010 FRACTION=±1/64
0°=±30' 0°=±5' 0°0°=REF. ONLY
ABOVE TOLERANCES APPLY UNLESS
OTHERWISE SPECIFIED TOLERANCES
ARE NOT ACCUMULATIVE.

| | | | |
|--|-----------------|--------------------------|-------------|
| ELECTRIC MOTORS AND SPECIALTIES INC. | | | |
| 115V 60HZ CW | | GARRETT, INDIANA 46738 | |
| FIRST MADE FOR ESP-OL50EM1B1 Regal Beloit EPC | | MATERIAL CUST NO. 291 | |
| DRAWN BY JIM NICHTER | DATE 1-19-96 | SCALE 1/2 SIZE | APPROVED BY |
| TITLE MOTOR OUTLINE | | | NO. A-23571 |