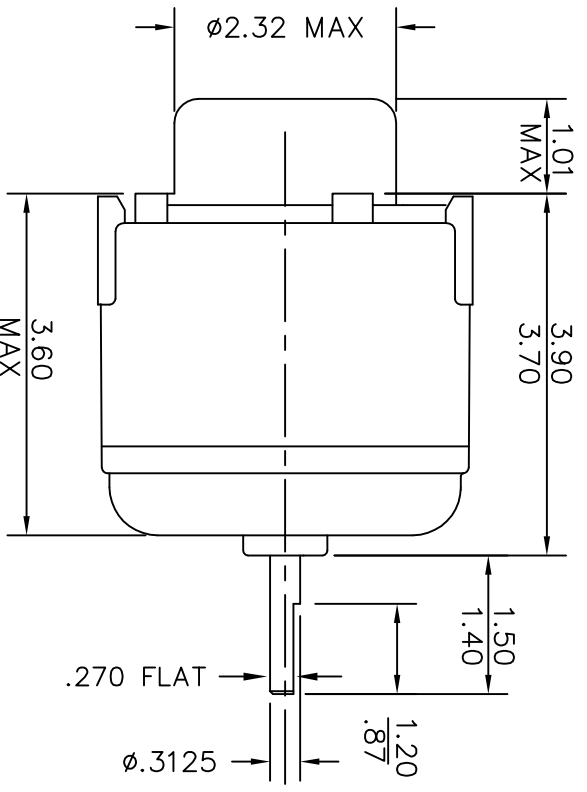
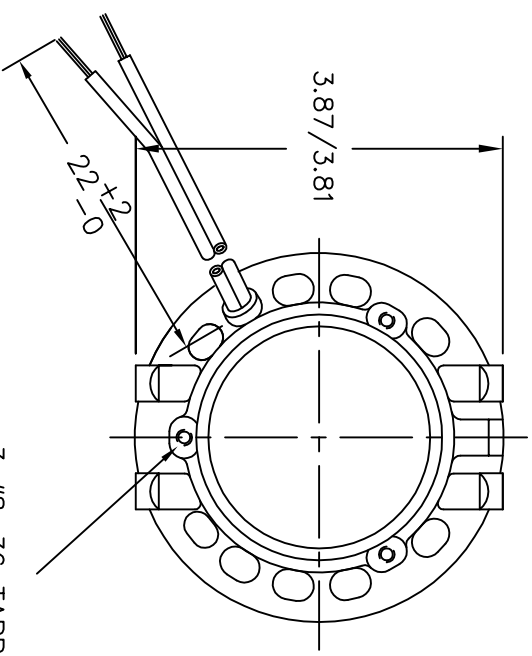


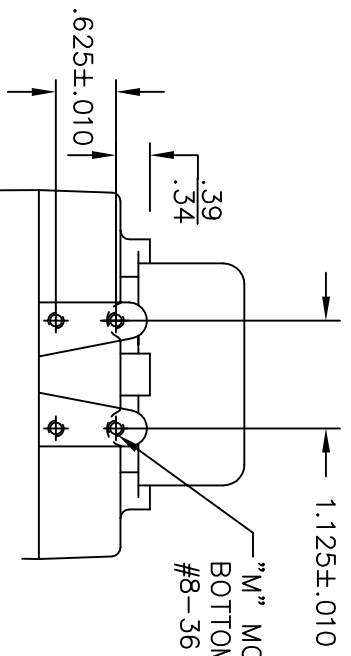
NO. A-21858

NO.	REVISIONS	DATE AND SIGNATURE
1	CORRECTED LEAD POS.	6-23-93
2	LEAD WAS (2) #10'S	7-6-98
3	CUST NAME WAS MAGNETEK	6-07-02
4	ADDED MAX DIM'S	1-26-04
5	WAS A.O. SMITH	8-31-11



3 #8-36 TAPPED HOLES
SPACED 120° APART ON A
2.813 DIA. CENTER LINE.

OUTLINE DIMENSIONS ON WHICH NO LIMIT IS SPECIFIED ARE
NOMINAL AND NOT GUARANTEED AS TO TOLERANCE. ADDITIONAL
INFORMATION ON TOLERANCE WILL BE FURNISHED ON SPECIFIC
REQUEST.



"M" MOUNTING TOP &
BOTTOM BOSSES TAPPED THRU
#8-36 N.F. 8 HOLES

TOLERANCE
.0000=±.0002 .000=±.005
.00=±.010 FRACTION=±1/64
0°=±.30' 0°0'=±5' 0°0'0"=REF. ONLY
ABOVE TOLERANCES APPLY UNLESS
OTHERWISE SPECIFIED TOLERANCES
ARE NOT ACCUMULATIVE.

ELECTRIC MOTORS AND SPECIALTIES INC.

230V 60/50HZ CW GARRETT, INDIANA 46738

FIRST MADE FOR	MATERIAL
ESP-OL50EM2B Regd Beloit EPC	CUST. NO. 285
DRAWN BY	SCALE
JIM NICTER	1/2 SIZE
DATE	APPROVED BY
6-08-93	
TITLE	NO. A-21858
MOTOR OUTLINE	