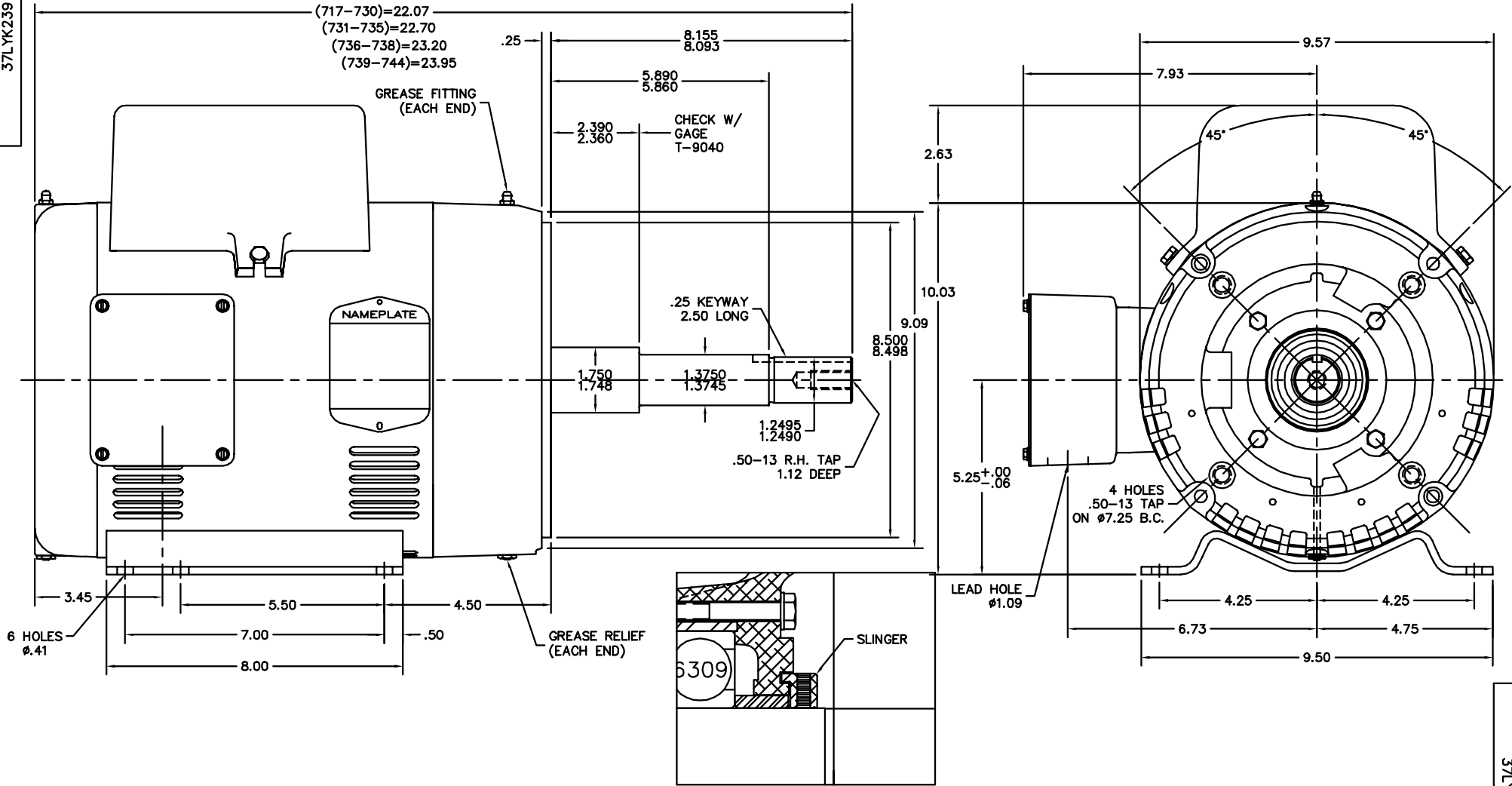


37LYK239



PULLEY END DETAIL

CUSTOMER IS RESPONSIBLE FOR DETERMINING THAT BALDOR'S PRODUCT WILL PERFORM SUITABLY IN THE INTENDED APPLICATION.

REV. DESC: REPLACE ENDPLATES		
REV. LTR: A	VERSION: 01	TDR: 000001018975
FILE: \AAA\00137\858	REVISED: 08:29:34 03/21/2017	BY: USZAHAR
MTL: -		

**BALDOR**

STD HORZ NEMA 213T-5JP OPSB 37L-LC

SH 1 of 1

37LYK239