

# RPM-AC FINNED FRAME VARIABLE SPEED ALTERNATING CURRENT MOTOR FL/UFL2882Z

ENCLOSURE: TOTALLY ENCLOSED

MOUNTING: FOOT

DRIVE METHOD: COUPLED OR BELTED

COOLING: FAN COOLED

ACCESSORIES: PROVISIONS FOR TACHOMETER MOUNTING ONLY WHEN SPECIFIED

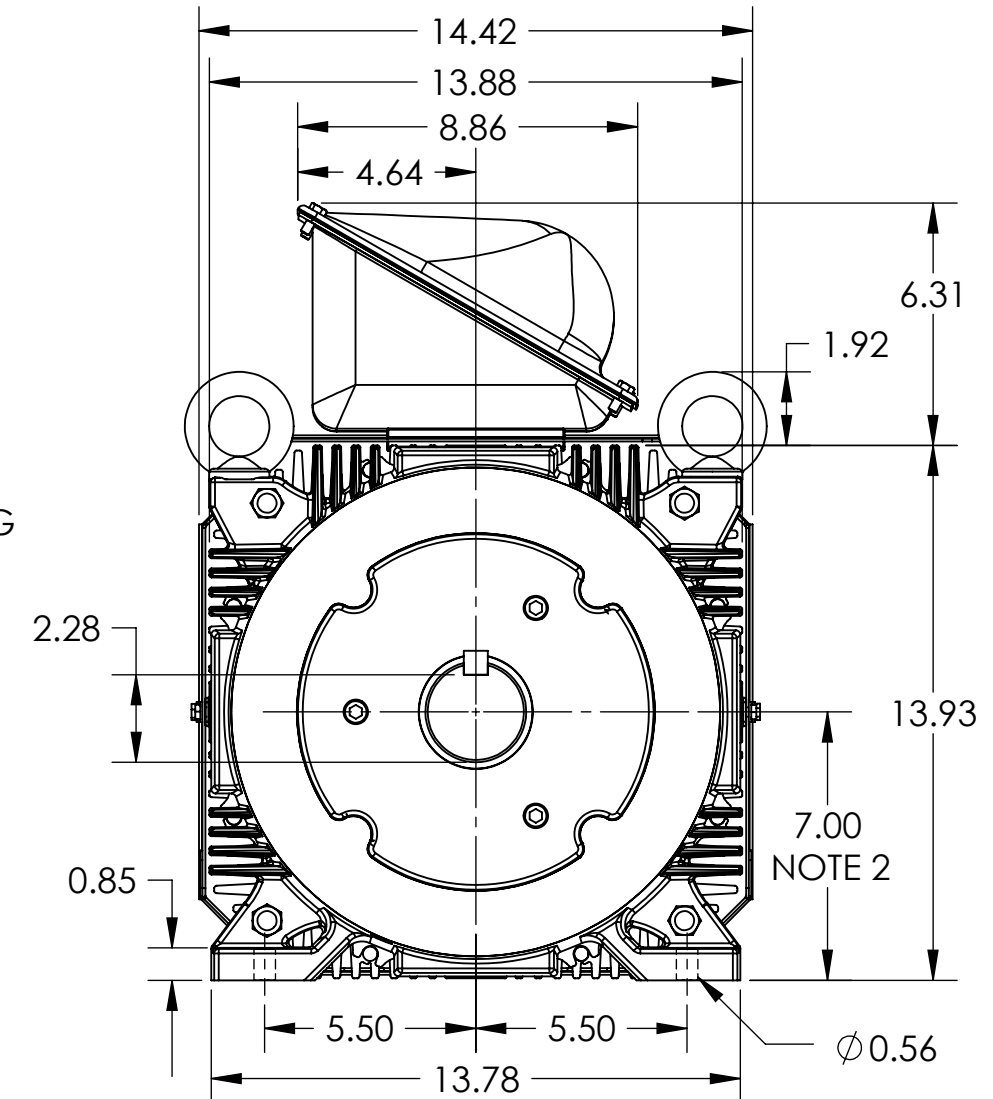
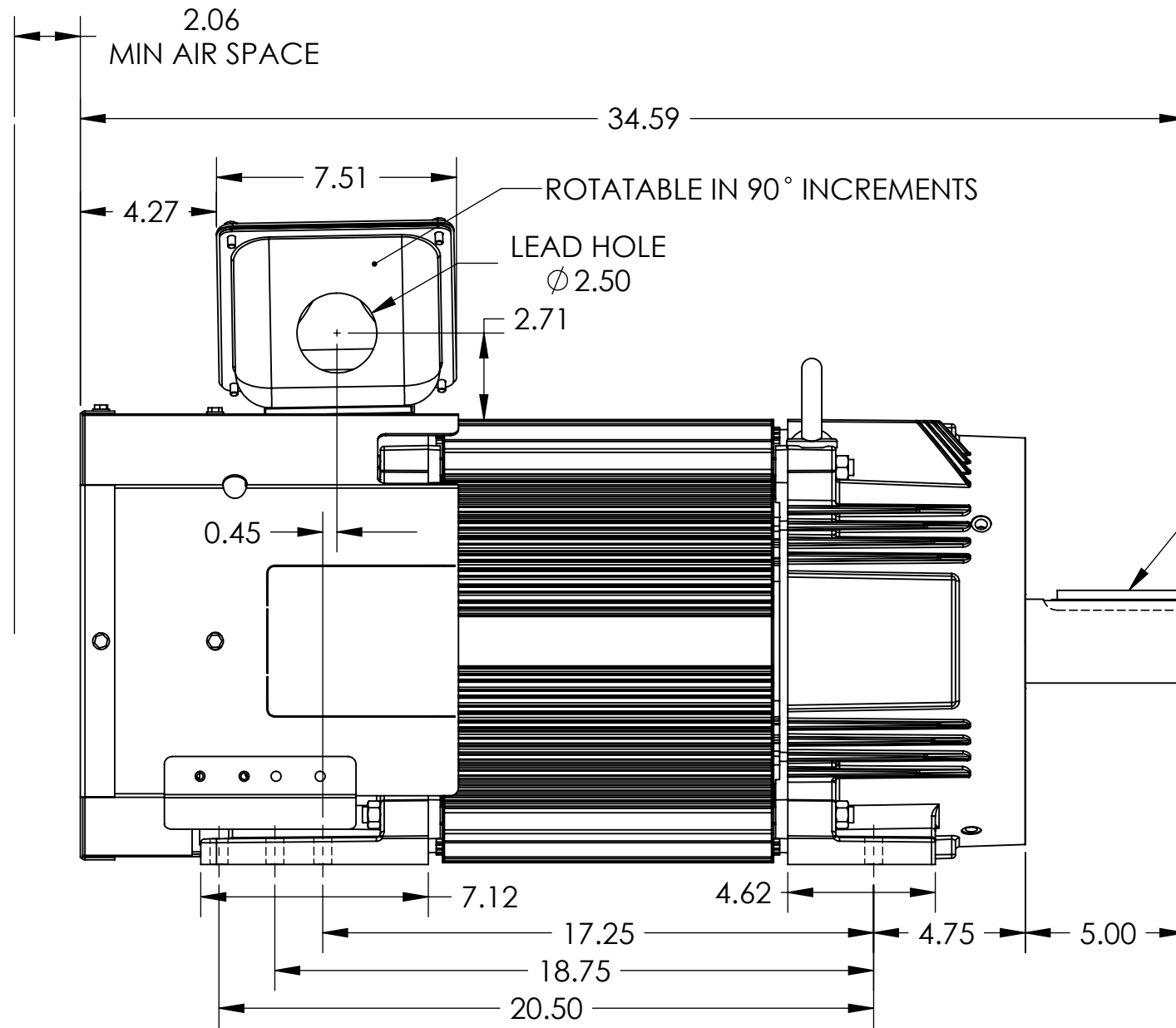
617242-001

D

C

B

A



D

C

B

A

TERMINAL BOX MAY BE LOCATED F1 OR F2 IF SPECIFIED  
160 AMP STEEL TERMINAL BOX SHOWN  
REFER TO 616779-50 FOR SPECIFIED TERMINAL BOX DIMENSIONS  
REFER TO 616779-55 FOR SPECIFIED TACHOMETER DIMENSIONS

DIMENSIONS ARE IN INCHES  
MOTOR WEIGHT: 720 LBS. (MAY VARY 15%)

NOTE 1: O.D.E. C-FACE & TACHOMETER MOUNTING  
1/2-13 TAP, 1.00 DEEP, ON A  $\phi$ 7.25 B.C.  
FACE RUNOUT AND ECCENTRICITY 0.004 MAX. T.I.R.

NOTE 2: SHAFT HEIGHT WILL NOT BE EXCEEDED  
SHIMS UP TO 0.03 INCHES IN THICKNESS ARE USUALLY  
REQUIRED FOR COUPLED OR GEARED MACHINES

CUSTOMER IS RESPONSIBLE FOR DETERMINING THAT BALDOR'S PRODUCT WILL PERFORM SUITABLY IN THE INTENDED APPLICATION

REV. DESC: CHANGE FRAME SIZE FROM FL/UFL2882Z			
REV: C	VERSION: 03	REVISED: 11:37:41 02/15/2017	TDR: 000001015879
MODEL NO. FL280_TFC		REF:	
BY: RGGWT			<b>B</b>

## BALDOR

DIM SHT,FL/UFL2882Z RPM AC TEFC PROV FOR TACH FT MTG

617242-001