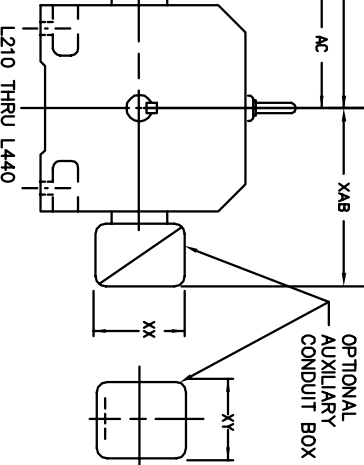
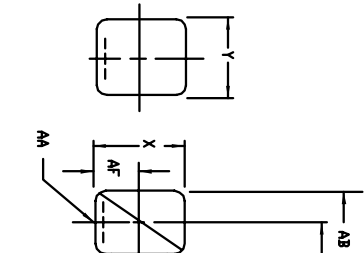
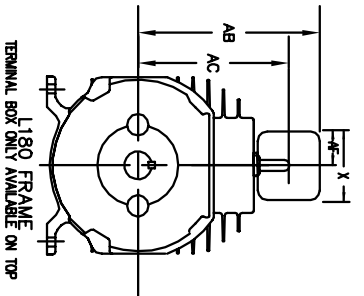


RPM AC INDUSTRIAL ALTERNATING CURRENT MOTORS

STEEL, CAST IRON, MILL AND TERMINAL BOARD CONDUIT BOX DIMENSIONS
NEMA FRAMES L180 thru L440 and IEC FRAMES DL112 thru DL280



DIMENSIONS ARE IN INCHES (mm)

FRAME SIZE	MAX. AMPS	STANDARD SIZE				PART NUMBER		
		AA(1)	AB	AC	AF			
L180	40	1.38	8.62	6.94	2.25	4.50	5.00	706320-3-A
L180	75	2	9.38	7.50	2.81	5.62	6.12	706320-5-A
L210	160	2	12.75	9.19	4.25	8.44	7.25	706320-9-A & D
L210	305	4	14.62	10.50	5.38	10.56	9.00	706320-16-A & D
L250	500	5	18.38	13.25	6.50	12.10	14.62	706320-1-C
L250	160	2	13.75	10.25	4.25	8.44	7.25	706320-9-A & D
L250	305	4	15.75	11.56	5.38	10.56	9.00	706320-16-A & D
L250	500	5	19.50	14.31	6.50	12.10	14.62	706320-1-C
L280	160	2	14.00	10.44	4.25	8.44	7.25	706320-9-A & D
L280	305	4	15.88	11.75	5.38	10.56	9.00	706320-16-A & D
L280	500	5	19.62	14.50	6.50	12.10	14.62	706320-1-C
L320	160	2	15.38	11.81	4.25	8.44	7.25	706320-9-A & D
L320	305	4	17.25	13.12	5.38	10.56	9.00	706320-16-A & D
L360	160	2	16.28	12.81	4.25	8.44	7.25	706320-9-A & D
L360	305	4	18.25	14.12	5.38	10.56	9.00	706320-16-A & D
L360	500	5	22.00	16.88	6.50	12.10	14.62	706320-1-C

FRAME SIZE	MAX. AMPS	STANDARD SIZE				PART NUMBER		
		AA(2)	AB	AC	AF			
L180	60	1	9.38	7.50	2.50	5.00	5.75	706320-4-C
L210	140	3	14.25	10.50	3.62	8.00	9.25	706320-12-B
L210	210	4	15.62	11.38	4.12	9.50	10.50	706320-13-A
L210	510	5	18.50	13.25	7.00	12.75	15.00	706320-14-D
L250	140	3	15.38	11.50	3.62	8.00	9.25	706320-12-B
L250	210	4	16.62	12.44	4.12	9.50	10.50	706320-13-A
L250	510	5	19.62	14.31	7.00	12.75	15.00	706320-14-D
L280	140	3	15.50	11.75	3.62	8.00	9.25	706320-12-B
L280	210	4	16.88	12.62	4.12	9.50	10.50	706320-13-A
L280	510	5	19.75	14.50	7.00	12.75	15.00	706320-14-D
L320	140	3	15.75	12.00	3.62	8.00	9.25	706320-12-B
L320	210	4	17.12	12.88	4.12	9.50	10.50	706320-13-A
L320	510	5	21.12	15.88	7.00	12.75	15.00	706320-14-D
L360	140	3	16.75	13.00	3.62	8.00	9.25	706320-12-B
L360	210	4	18.12	13.88	4.12	9.50	10.50	706320-13-A
L360	510	5	22.12	16.88	7.00	12.75	15.00	706320-14-D

CUSTOMER IS RESPONSIBLE FOR DETERMINING THAT BALDOR'S PRODUCT WILL PERFORM SUITABLY IN THE INTENDED APPLICATION.

REV. DESC: ADD 1260 AMP L400, ADD 1300 AMP L440	VERSION: 01	TDR: 000000804459
REV. LTR: A	REVISED: 10:23:58 06/18/2013	BY: RGGWT
FILE: \RGG\00003\688		
MTL: -		

BALDOR
DIM SHT NEMA L180 THRU L440 & IEC DL112 THRU DL280
SH 1 of 1

FRAME NEMA/IEC	AMPS	MILL CONDUIT BOX DIMENSIONS WITH TERMINAL BOARDS (MAXIMUM)				PART NUMBER		
		AA	AB (mm)	AC (mm)	AF (mm)			
L180/DL112	85	(4)	9.38(239)	7.50(191)	2.81(72)	5.62(143)	6.12(156)	706320-5-A or 4-C
L210/DL132	100	--	10.77(274)	9.04(230)	3.74(95)	7.48(190)	7.48(190)	706310-56-A
L210/DL132	160	--	11.63(296)	9.62(245)	4.41(112)	8.82(224)	8.82(224)	706310-56-B
L250/DL160	100	--	12.09(307)	10.36(264)	3.74(95)	7.48(190)	7.48(190)	706310-56-A
L250/DL160	160	--	12.95(329)	11.94(278)	4.41(112)	8.82(224)	8.82(224)	706310-56-B
L280/DL180	160	--	13.58(345)	11.57(294)	4.41(112)	8.82(224)	8.82(224)	706310-56-B
L320/DL200	800	--	20.06(510)	17.53(446)	6.20(158)	14.39(366)	14.39(366)	706310-63-B
L320/DL200	800	--	20.78(528)	18.25(464)	6.20(158)	14.39(366)	14.39(366)	706310-63-B
L400/DL250	800	--	21.75(553)	19.25(489)	6.20(158)	14.39(366)	14.39(366)	706310-63-B
L400/DL250	1260	--	25.94(659)	18.44(468)	6.06(154)	18.50(470)	18.50(470)	706310-63-E
L440/DL280	1260	--	27.38(697)	19.88(505)	6.06(154)	18.50(470)	18.50(470)	706310-63-E
L440/DL280	1300	--	30.38(772)	21.38(543)	12.44(316)	24.00(610)	24.00(610)	706310-360-A

FRAME SIZE	XAB	OPTIMAL AUXILIARY CONDUIT BOX DIMENSIONS (MAXIMUM)				PART NUMBER	
		XX	XY	XY	XY		
L210/DL132	7.38	4.25	6.02007-26-A	L210/DL132	10.88	8.00	706310-3-B
L250/DL160	8.44	4.25	6.02007-26-A	L250/DL160	11.88	8.00	706310-3-B
L280/DL180	9.12	4.25	6.02007-26-A	L280/DL180	12.62	8.00	706310-3-B
L320/DL200	11.00	4.25	6.02007-26-A	L320/DL200	13.50	8.00	706310-3-B
L360/DL225	11.00	4.25	6.02007-26-A	L360/DL225	14.50	8.00	706310-3-B
L400/DL250	12.00	4.25	6.02007-26-A	L400/DL250	15.50	8.00	706310-3-B
L440/DL280	13.12	4.25	6.02007-26-A	L440/DL280	16.62	8.00	706310-3-B

(1) AA' CONDUIT
(2) AB' CONDUIT
(3) CONDUIT TO BRIDGE
(4) 2" DN -SA or 1" TAP DN -4C
CONDUIT BOX CAN BE ROTATED
360°. CONDUIT BOX MAY BE
LOCATED F1, F2 OR F3 AS
SPECIFIED