

# DUTY MASTER ALTERNATING CURRENT MOTORS

## SQUIRREL-CAGE INDUCTION

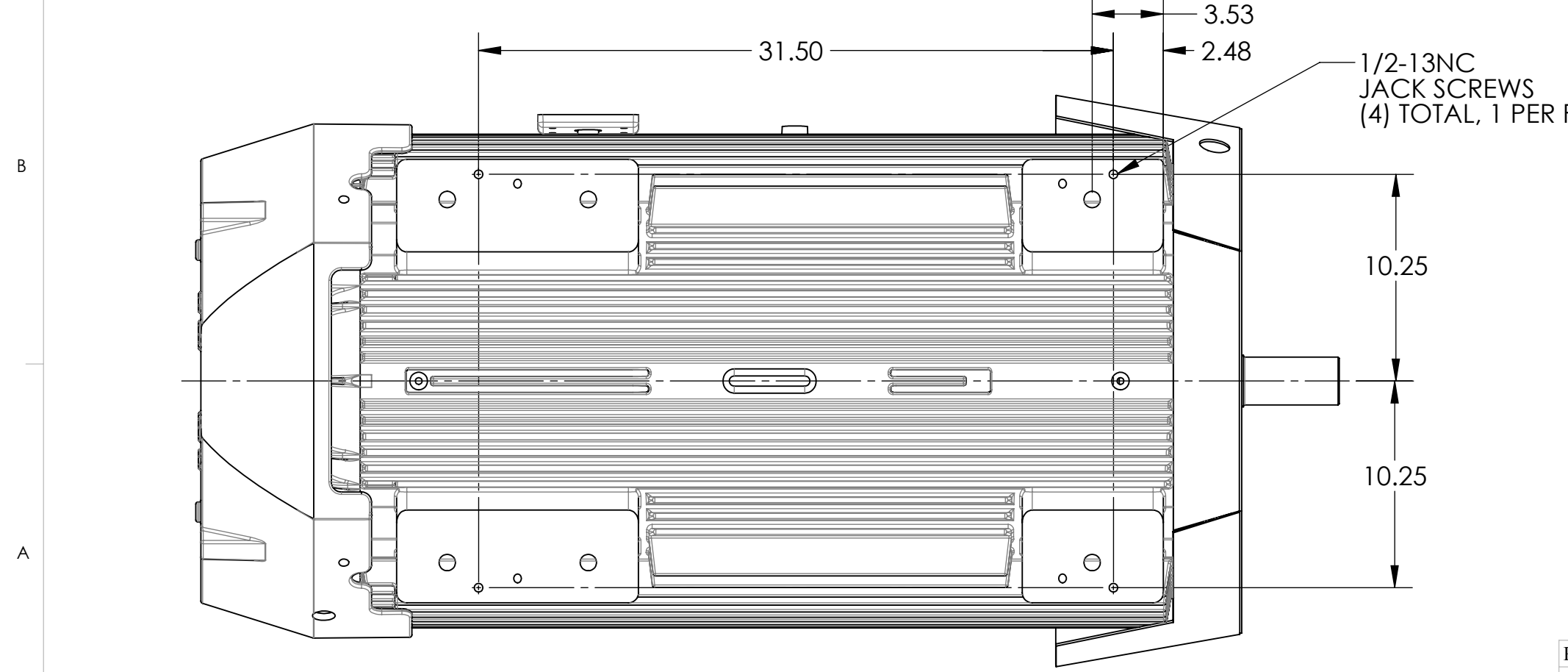
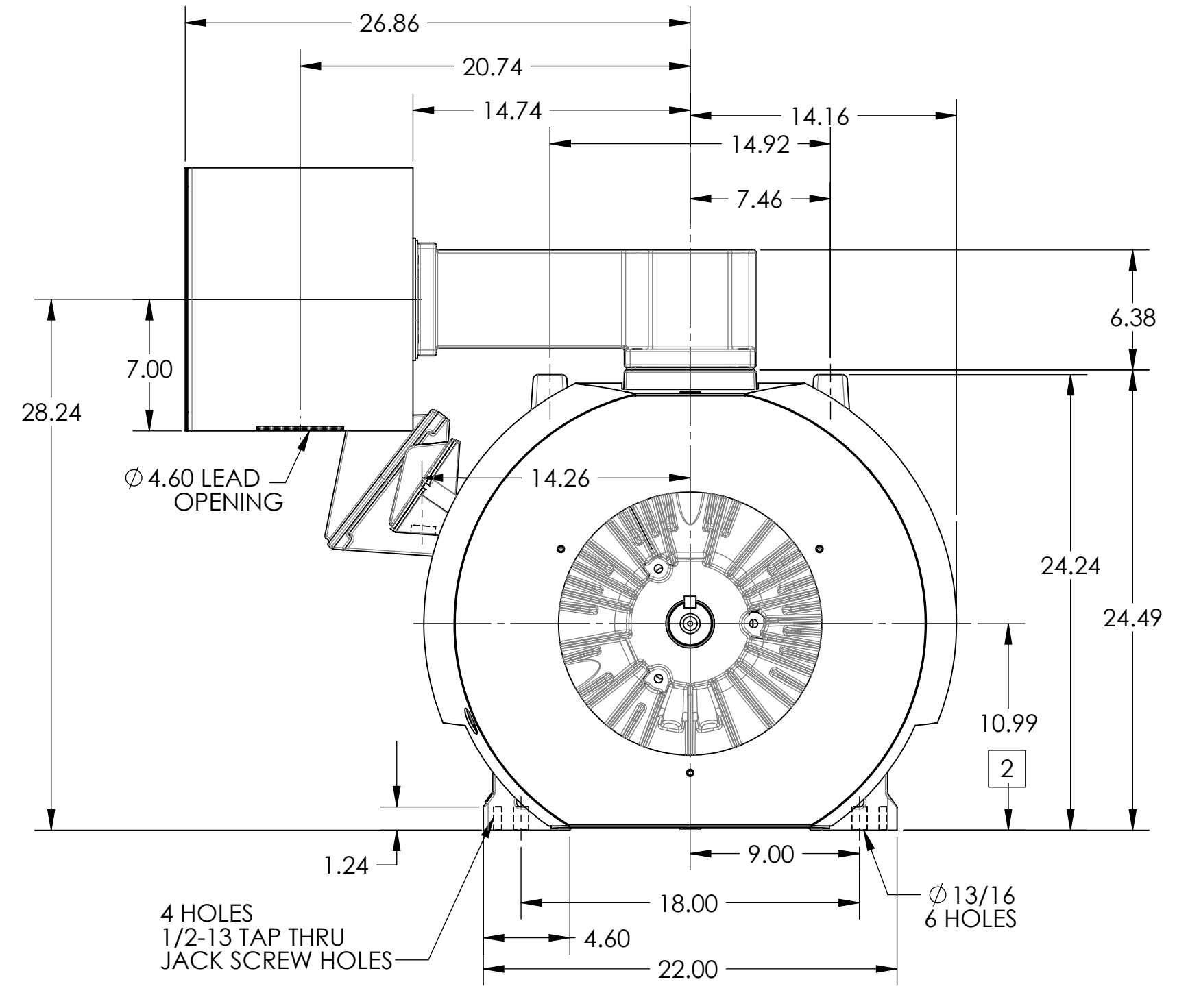
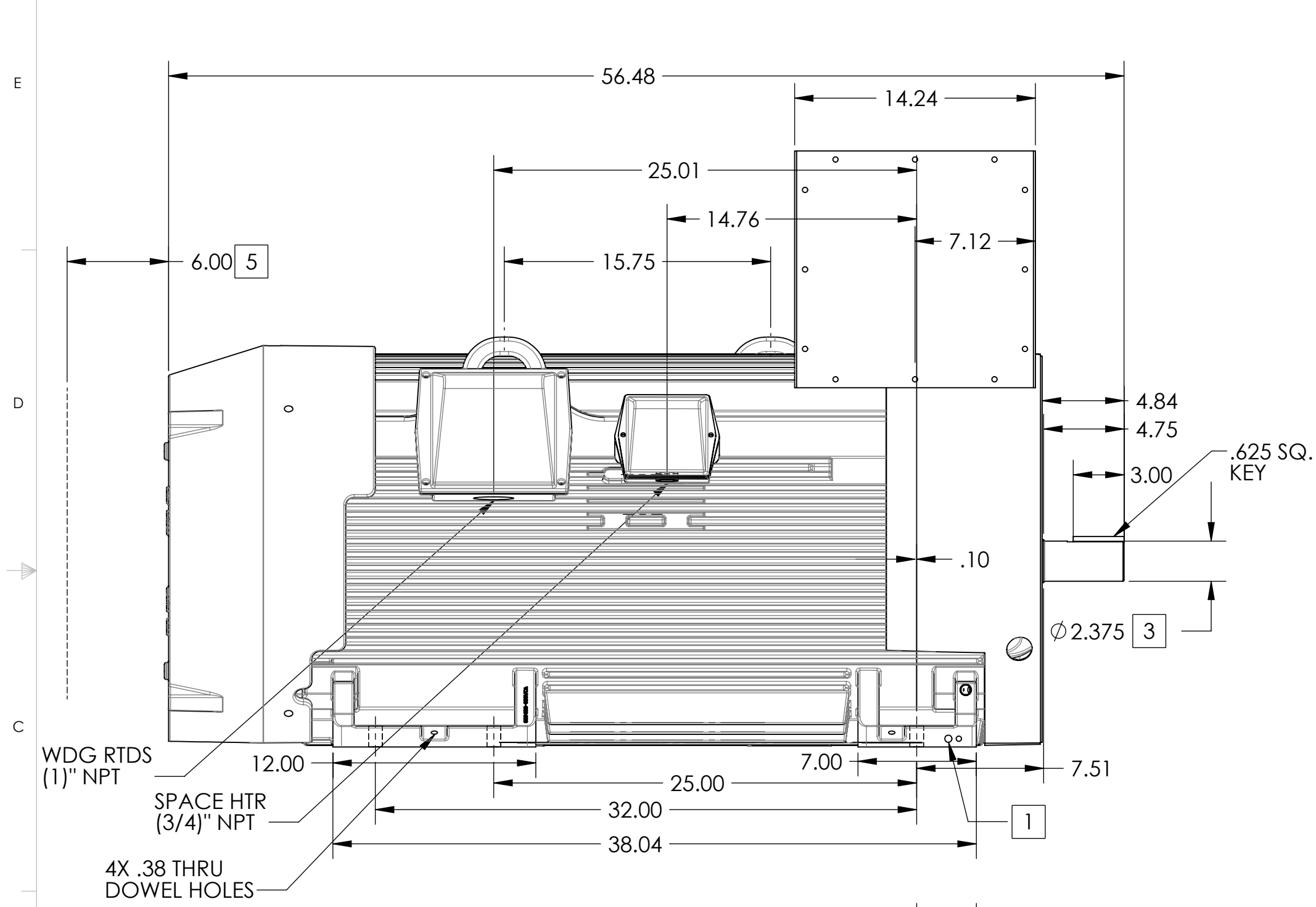
ENCLOSURE: TOTALLY ENCLOSED

FRAME GL449TS ABOVE NEMA RATINGS

COOLING: FAN COOLED

MOUNTING: FOOT

INCLUDES DOWEL PIN HOLES, VERTICAL JACK SCREW HOLES, F1 AUX BOXES FOR WDG RTD & SPACE HEATERS AND 14X14X12 FABRICATED MAIN CBOX



1. GROUND HOLES QTY 1 1/2-13 TAP; QTY 1 3/8-16 TAP
2. VARIES +.00,-.06
3. VARIES +.000,-.001
4. MOTOR WEIGHTS MAY VARY BY 15% DEPENDING ON RATING.
5. OBSTRUCTION MUST NOT ENCROACH ON AIR INLET

CONDUIT BOX LOCATED ON OPPOSITE SIDE WHEN F-2. IF MOUNTING CLEARANCE DETAILS ARE REQUIRED, CONSULT FACTORY. MAXIMUM PERMISSIBLE SHAFT RUNOUT WHEN MEASURED AT END OF STANDARD SHAFT EXTENSION IS .003" T.I.R. TO 5 INCH DIA.

WEIGHT (LBS): 3900

DIMENSIONS ARE IN INCHES

CUSTOMER IS RESPONSIBLE FOR DETERMINING THAT MOTOR PERFORMANCE IS SUITABLE IN THE APPLICATION.

REV. DESC: INITIAL RELEASE FOR GP PRODUCT LINE			
REV: -	VERSION: 00	REVISED: 03:36:30 10/15/2013	TDR: 000000820614
MODEL NO. 617423-166		REF:	
BY: MGHJMZ2	Material:		

# BALDOR

D/S GL449TS W/ 14X14X12 CB, DOWEL, JACK SCREWS, 320 AUX, 180 AUX

# DUTY MASTER ALTERNATING CURRENT MOTORS

## SQUIRREL-CAGE INDUCTION

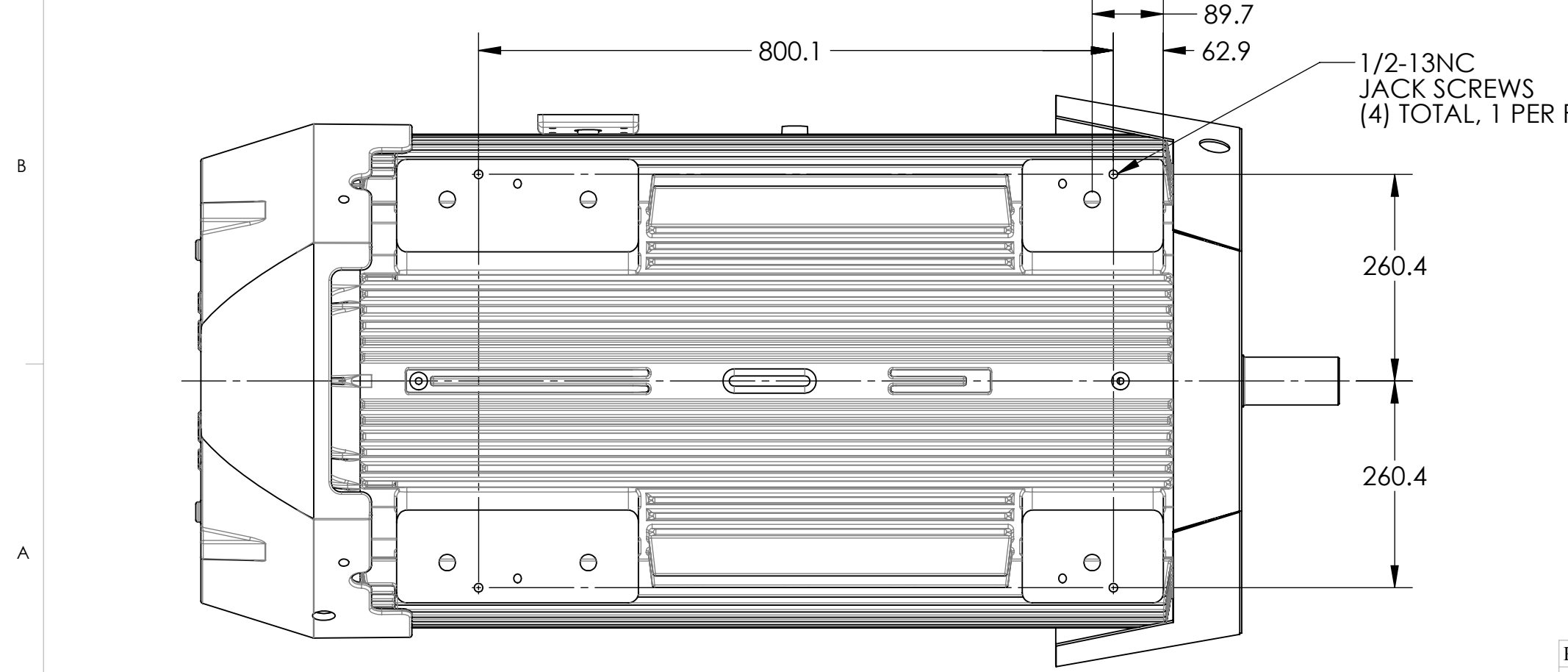
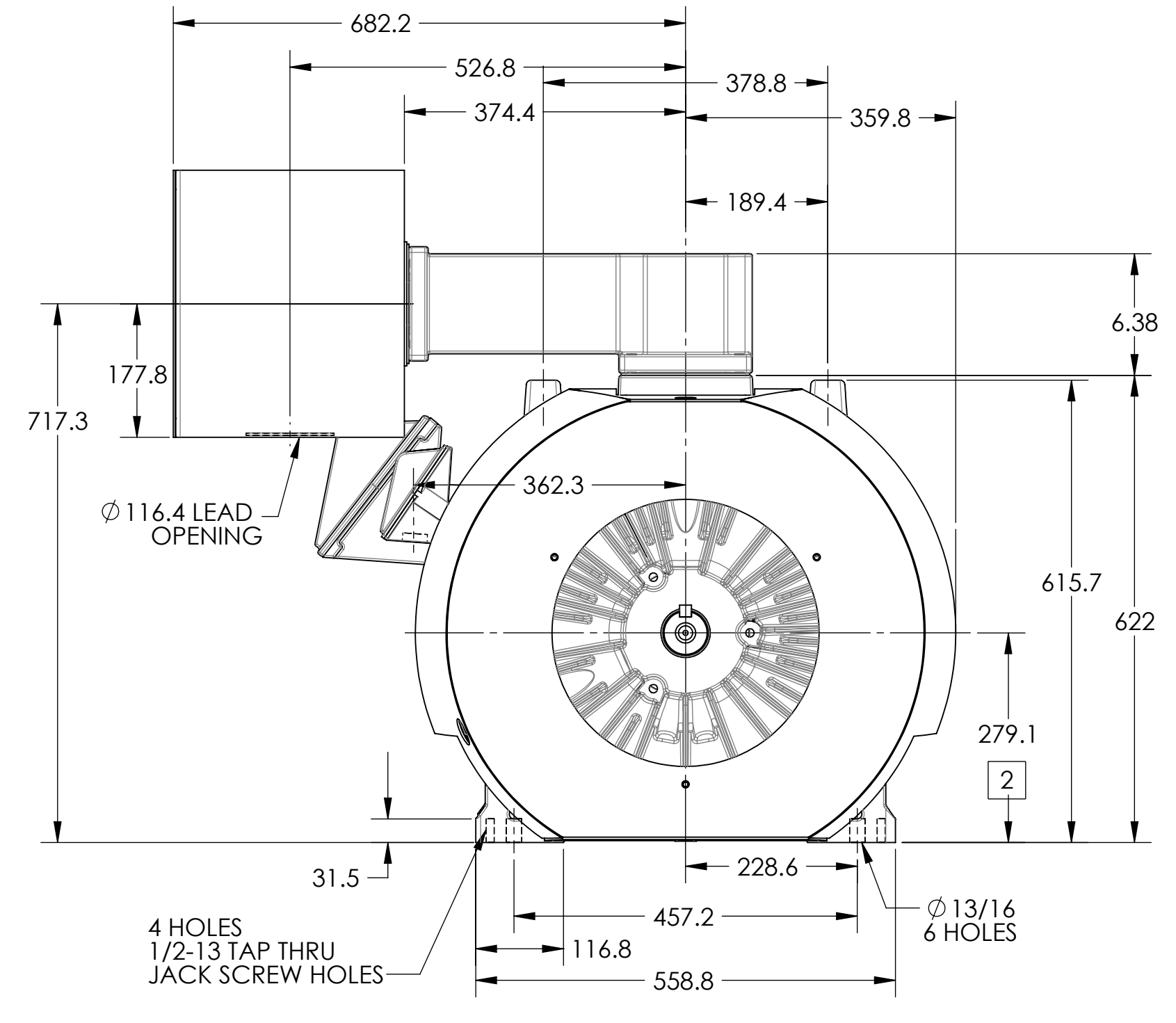
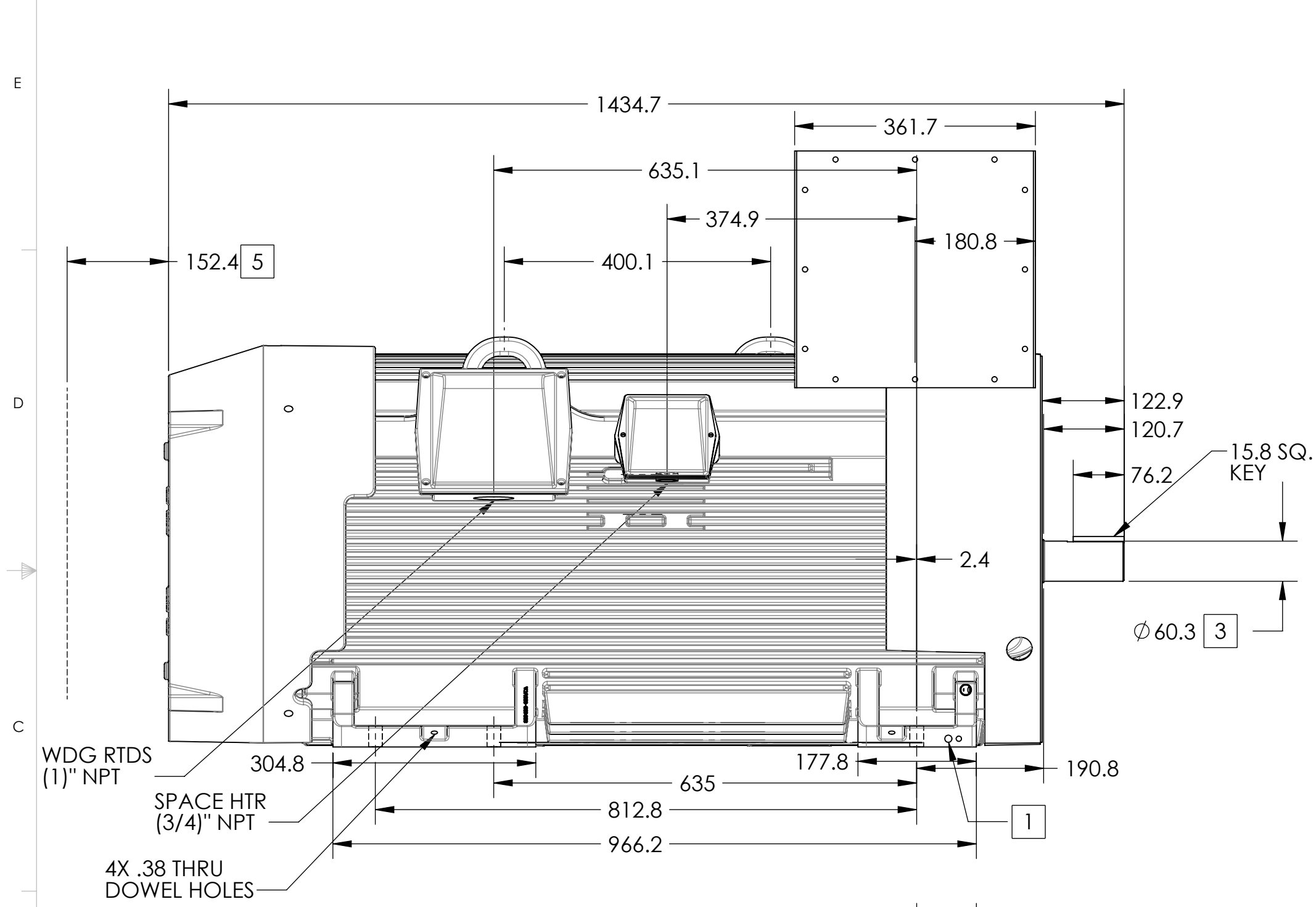
ENCLOSURE: TOTALLY ENCLOSED

FRAME GL449TS ABOVE NEMA RATINGS

COOLING: FAN COOLED

MOUNTING: FOOT

INCLUDES DOWEL PIN HOLES, VERTICAL JACK SCREW HOLES, F1 AUX BOXES FOR WDG RTD & SPACE HEATERS AND 14X14X12 FABRICATED MAIN CBOX



- 1. GROUND HOLES QTY 1 1/2-13 TAP; QTY 1 3/8-16 TAP
- 2. VARIES +.00,-1.5
- 3. VARIES +.000,-.025
- 4. MOTOR WEIGHTS MAY VARY BY 15% DEPENDING ON RATING.
- 5. OBSTRUCTION MUST NOT ENCROACH ON AIR INLET

CONDUIT BOX LOCATED ON OPPOSITE SIDE WHEN F-2. IF MOUNTING CLEARANCE DETAILS ARE REQUIRED, CONSULT FACTORY. MAXIMUM PERMISSIBLE SHAFT RUNOUT WHEN MEASURED AT END OF STANDARD SHAFT EXTENSION IS .076MM T.I.R. TO 127MM DIA.

WEIGHT (N): 17400

DIMENSIONS ARE IN MM, SEE SHEET 1 FOR DIMENSIONS IN INCHES

CUSTOMER IS RESPONSIBLE FOR DETERMINING THAT MOTOR PERFORMANCE IS SUITABLE IN THE APPLICATION.

REV. DESC: INITIAL RELEASE FOR GP PRODUCT LINE	VERSION: 00	REVISED: 03:36:30 10/15/2013	TDR: 000000820614
MODEL NO. 617423-166	BY: MGHJMZ2	Material:	REF:

**BALDOR**

D/S GL449TS W/ 14X14X12 CB, DOWEL, JACK SCREWS, 320 AUX, 180 AUX