

# DUTY MASTER ALTERNATING CURRENT MOTORS

SQUIRREL-CAGE INDUCTION  
CAST IRON CONSTRUCTION

ENCLOSURE: TOTALLY ENCLOSED  
MOUNTING: FOOT

FRAMES 364T-365T

COOLING: FAN COOLED

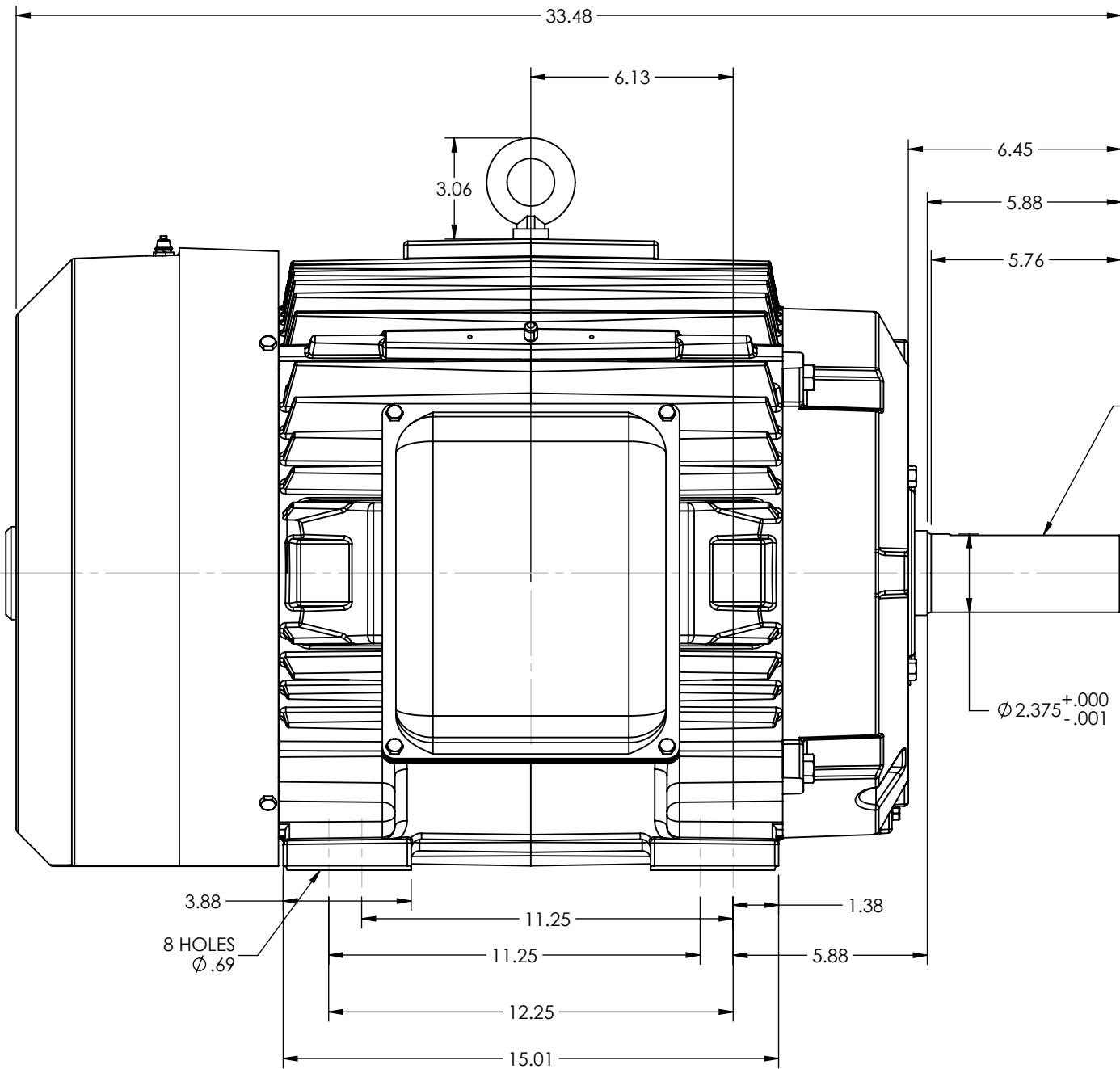
617428-077

D

C

B

A



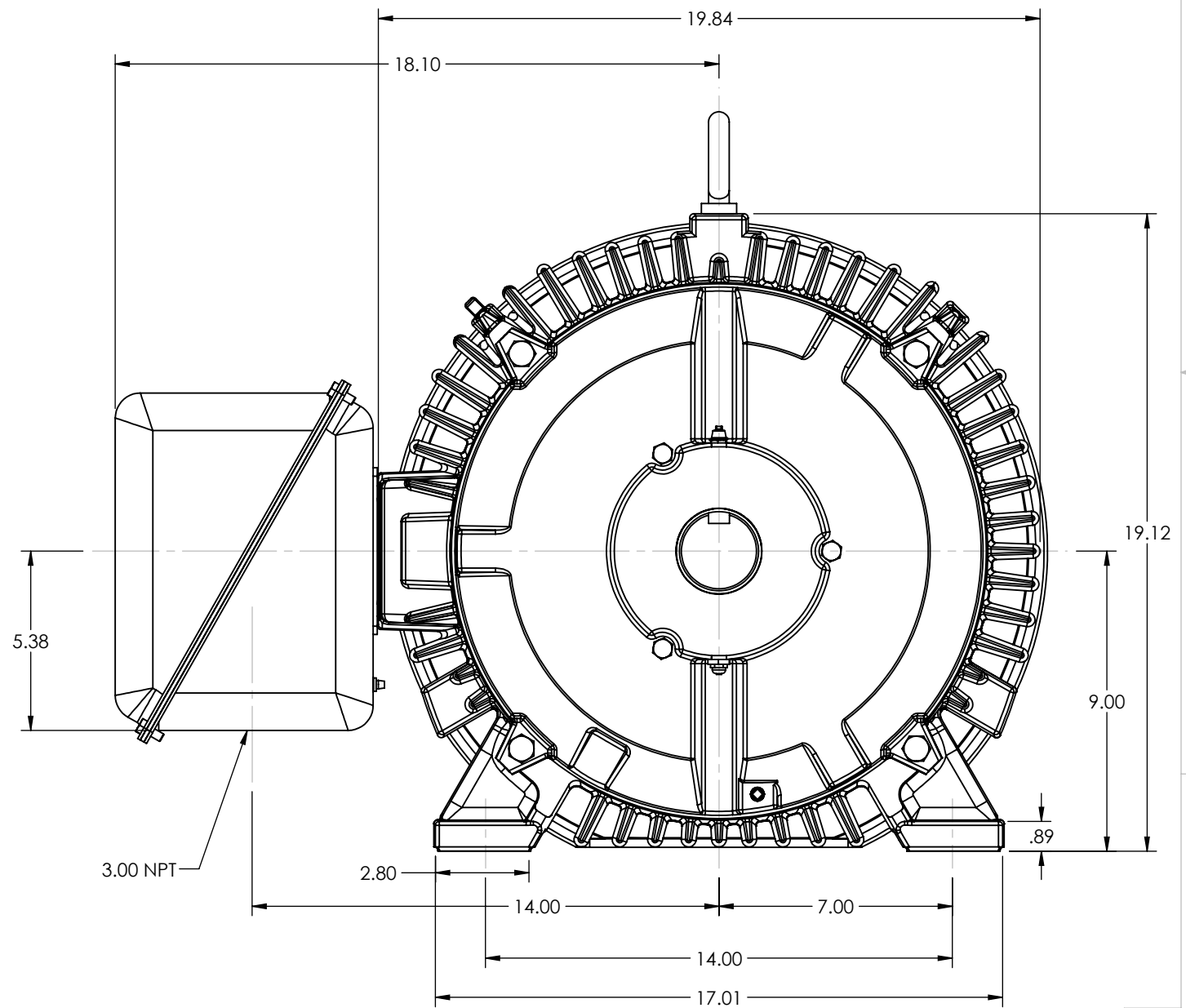
.63 SQ KEY  
4.25 LONG

$\phi 2.375^{+0.000}_{-0.001}$

3.88  
8 HOLES  
 $\phi .69$

WEIGHT (LBS): 364T = 800  
365T = 840  
MOTOR WEIGHTS MAY VARY BY 15% DEPENDING UPON RATING.

REV. DESC: LOAD			
REV: -	VERSION: 00	REVISED: 01:57:19 01/26/2015	TDR: 00000889466
MODEL NO. 617428-077			REF:
BY: ENALEM0			<b>B</b>



3.00 NPT

CUSTOMER IS RESPONSIBLE FOR DETERMINING THAT BALDOR'S PRODUCT WILL PERFORM SUITABLY IN THE INTENDED APPLICATION

**BALDOR**

HOR 364-5T TEFC

617428-077

D

C

B

A

8

7

6

5

4

3

2

1