

DUTY MASTER ALTERNATING CURRENT MOTORS

SQUIRREL-CAGE INDUCTION

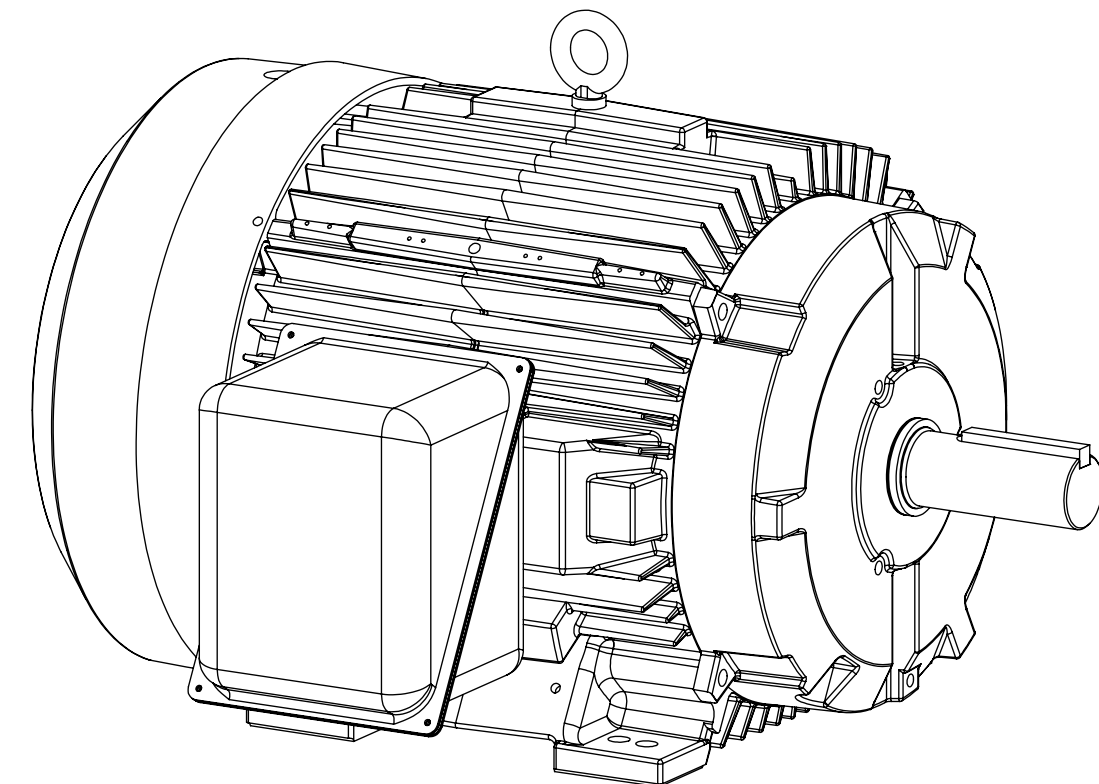
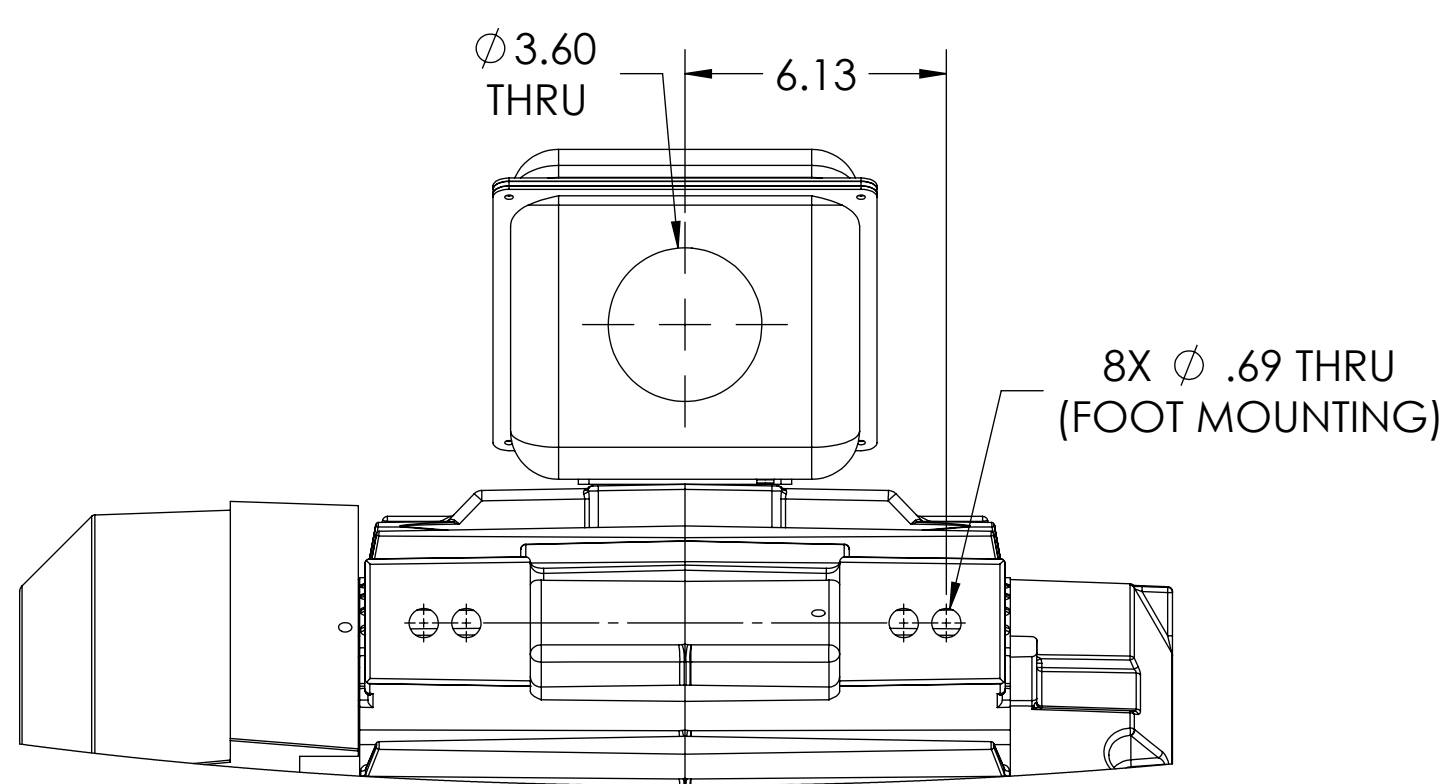
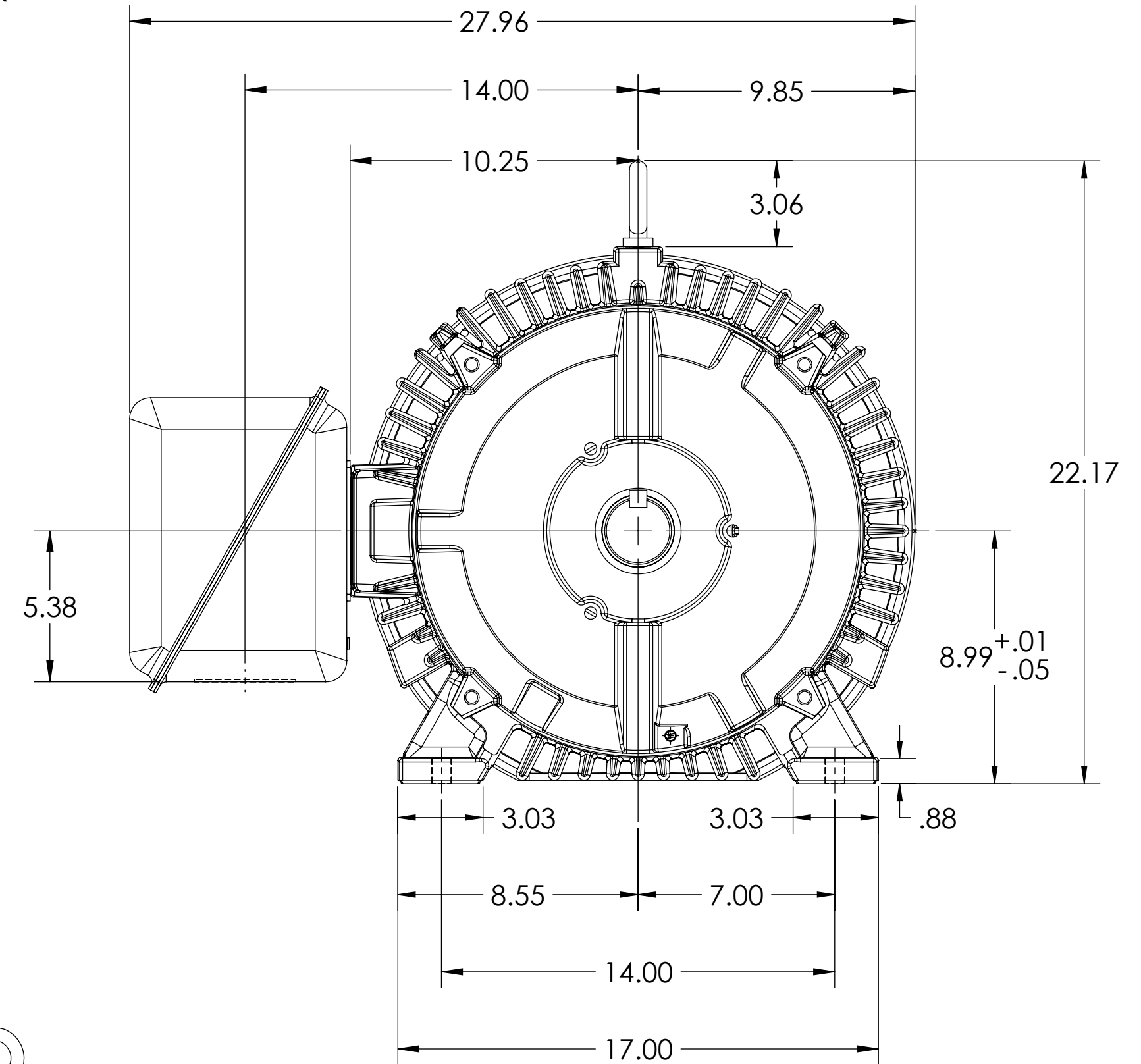
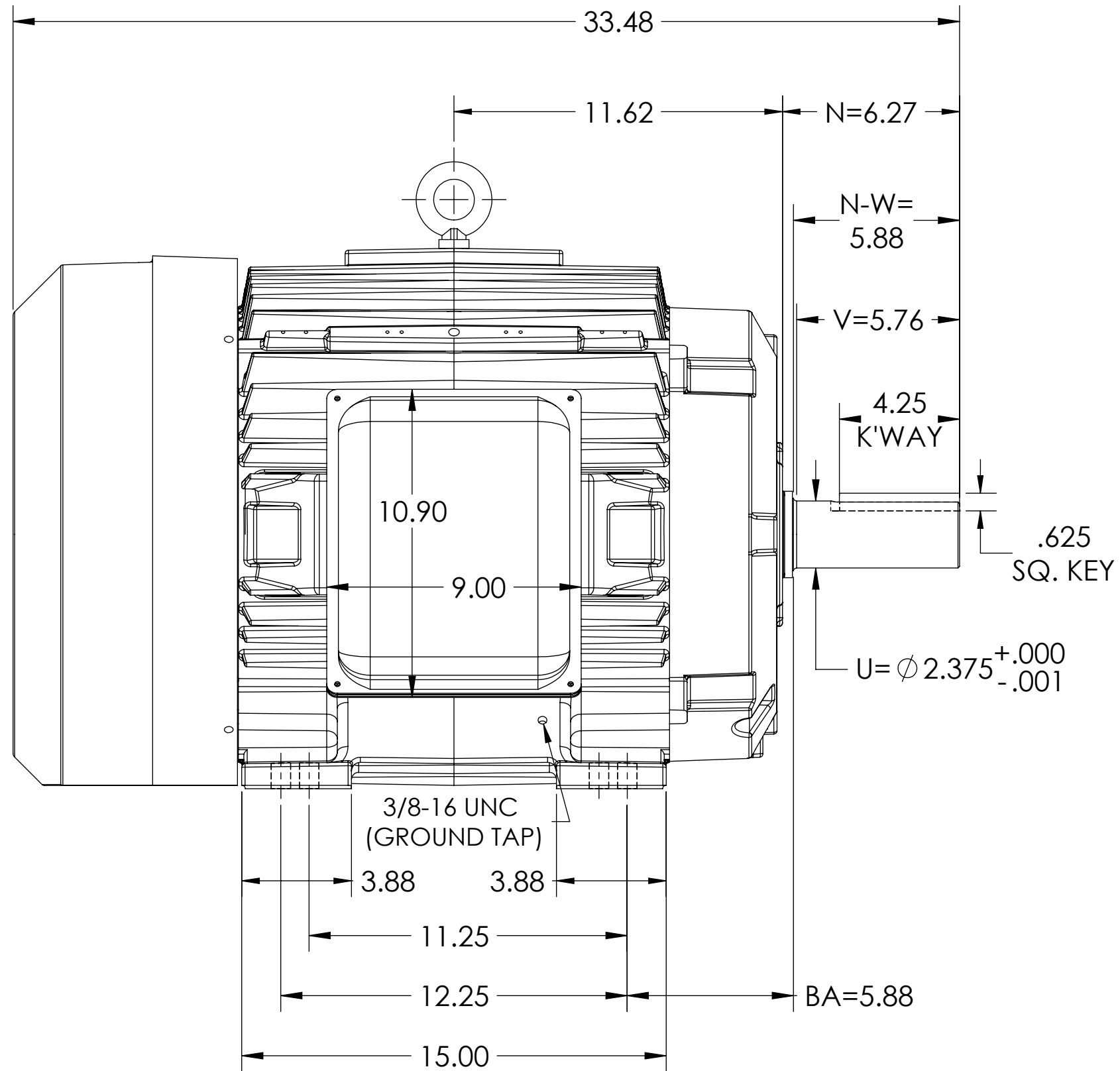
ENCLOSURE: TOTALLY ENCLOSED

MOUNTING: FOOT, F-1 SIDE

E365T/E364T FRAME MOUNTING

COOLING: FAN COOLED

STEEL CONDUIT BOX



DIMENSIONS ARE IN INCHES.
WEIGHT (LBS.) 800 / MOTOR WEIGHT MAY VARY 15% DEPENDING ON RATING.
CUSTOMER IS RESPONSIBLE FOR DETERMINING THAT MOTOR PERFORMANCE IS SUITABLE IN THE APPLICATION.

REV. DESC: 1089873 UPDATE DS TO DISPLAY GROUND TAP			
REV: B	VERSION: 02	REVISED: 10:09:42 11/05/2018	TDR: 000001089873
MODEL NO. 617431-412			
BY: USJEDIL			

BALDOR

E365/364T TEFC FOOT F1 STEEL CONDUIT BOX

SHEET NUMBER
1 OF 1
617431-412

IF MOUNTING CLEARANCE DETAILS ARE REQUIRED, CONSULT FACTORY.
MAX PERMISSIBLE SHAFT RUNOUT WHEN MEASURED AT END OF STANDARD SHAFT EXTENSION IS .003" T.I.R.