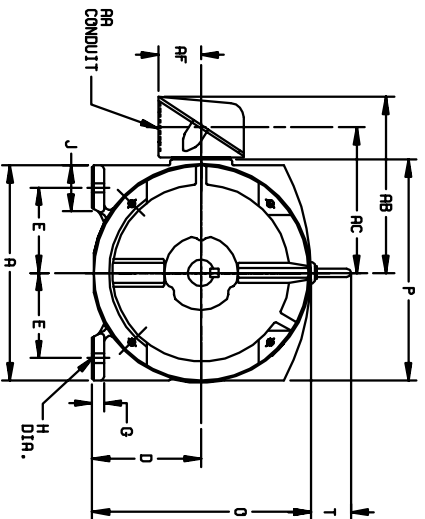
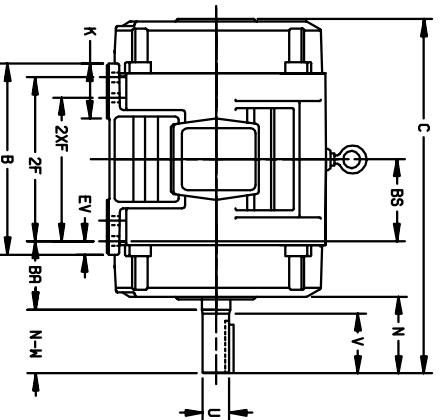


DUTY MASTER ALTERNATING CURRENT MOTORS
SQUIRREL-CAGE INDUCTION

ENCLOSURE: PROTECTED
MOUNTING: FOOT

COOLING: SELF-VENTILATED

FRAMES 250T THRU 440T



DIMENSIONS ARE IN INCHES

FRAME	A	D(2)	E	G	H	J	K	O	P	T	STEEL TERMINAL BOX						EV
254T-256T	12.50	6.25	5.00	.89	.56	2.25	3.50	12.61	12.69	2.44	1-1/4	10.19	8.19	2.50	4.25	.62	
284T-286TS	14.00	7.00	5.50	.75	.56	2.75	3.75	14.12	14.31	2.44	1-1/2	12.19	9.44	3.19	4.75	1.00	
324T-326TS	15.75	8.00	6.25	.88	.69	3.12	4.00	16.10	16.42	2.44	2	14.25	10.75	4.25	5.25	1.00	
364T-365TS	17.00	9.00	7.00	.88	.69	3.00	3.62	18.30	19.56	2.94	3	18.06	14.00	5.36	5.86	1.00	
404T-405TS	19.00	10.00	8.00	1.12	.81	3.25	4.75	20.56	21.81	2.94	3	19.06	15.00	4.38	6.62	1.12	
444T-445TS	21.00	11.00	9.00	1.12	.81	3.25	5.25	22.91	23.62	3.25	3	22.62	17.38	5.50	7.50	1.25	

FRAME	C	BS	B	2F	2XF	N	N-W(6)	U(3)	V	SQ.	LGTH.	WEIGHT
SIZE	22.44	5.00	11.25	----	8.25	4.25	4.00	1.625	3.75	.375	2.75	265
254T	22.44	5.00	11.25	10.00	----	4.25	4.00	1.625	3.75	.375	2.75	275
284T	24.94	5.50	13.00	----	8.50	4.88	4.62	1.875	4.38	.500	3.25	340
284TS	24.96	5.50	13.00	----	8.50	3.50	3.25	1.625	3.00	.375	1.88	340
286T	24.94	5.50	13.00	11.00	----	4.88	4.62	1.875	4.38	.500	3.25	370
286TS	23.56	5.50	13.00	11.00	----	3.50	3.25	1.625	3.00	.375	1.88	370
324T	27.56	6.00	14.00	----	10.50	5.50	5.25	2.125	5.00	.500	3.75	465
324TS	26.06	6.00	14.00	12.00	----	4.00	3.75	1.875	3.50	.500	2.00	465
326T	27.56	6.00	14.00	12.00	----	5.50	5.25	2.125	5.00	.500	3.75	505
326TS	26.06	6.00	14.00	12.00	----	4.00	3.75	1.875	3.50	.500	2.00	505
364T	29.70	6.12	14.25	----	11.25	6.12	5.88	2.375	5.62	.625	4.25	715
364TS	27.58	6.12	14.25	11.25	----	4.00	3.75	1.875	3.50	.500	2.00	710
366T	29.70	6.12	14.25	12.25	----	6.12	5.88	2.375	5.62	.625	4.25	755
366TS	27.58	6.12	14.25	12.25	----	4.00	3.75	1.875	3.50	.500	2.00	750
404T	34.00	6.88	16.00	----	12.25	7.62	7.25	2.875	7.00	.750	5.50	1025
404TS	31.00	6.88	16.00	----	12.25	4.62	4.25	2.125	4.00	.500	2.75	1020
405T	34.00	6.88	16.00	13.75	----	7.62	7.25	2.875	7.00	.500	5.50	1065
405TS	31.00	6.88	16.00	13.75	----	4.62	4.25	2.125	4.00	.500	2.75	1060
444T	39.56	8.25	19.00	----	14.50	8.94	8.50	3.375	8.25	.875	6.86	1715
444TS	35.81	8.25	19.00	----	14.50	5.19	4.75	2.375	4.50	.625	3.00	1710
445T	39.56	8.25	19.00	16.50	----	8.94	8.50	3.375	8.25	.875	6.86	1755
445TS	35.81	8.25	19.00	16.50	----	5.19	4.75	2.375	4.50	.625	3.00	1750

- (1) SPECIAL DIMENSIONS APPLYING TO THIS ORDER ON THIS LINE.
- (2) "D" VARIES — 250T - 320T +.00, -.03.
360T - 440T +.00, -.06.
- (3) "U" VARIES +.000, -.001
- (4) ALL FRAMES HAVE EIGHT MOUNTING HOLES FOR DUAL MOUNTING.
- (5) MOTOR WEIGHTS MAY VARY BY 15% DEPENDING UPON RATING.
- FRAME "N-W" VARIES +.00, -.25 TYPE — CERTIFIED FOR —
ORDER — ITEM — HP — RPM — PH — HZ — VOLTS —
SALES ORDER — APPROVED BY — DATE —

CUSTOMER IS RESPONSIBLE FOR DETERMINING THAT BALDOR'S PRODUCT WILL PERFORM SUITABLY IN THE INTENDED APPLICATION.

REV. DESC: ASSIGNED TO BUSLOAD	VERSION: 01	TDR: 000000489455
REV. LTR: A	REVISED: 15:03:33 02/02/2009	BY: RAGZJR
FILE: \RAG\00008\297		
MTL: -		

Baldor • Dodge • Reliance

DIM SHT PROT SV FT 250-440T

SH 1 of 1