

DUTY MASTER ALTERNATING CURRENT MOTORS

604989-483

ENCLOSURE: TOTALLY ENCLOSED

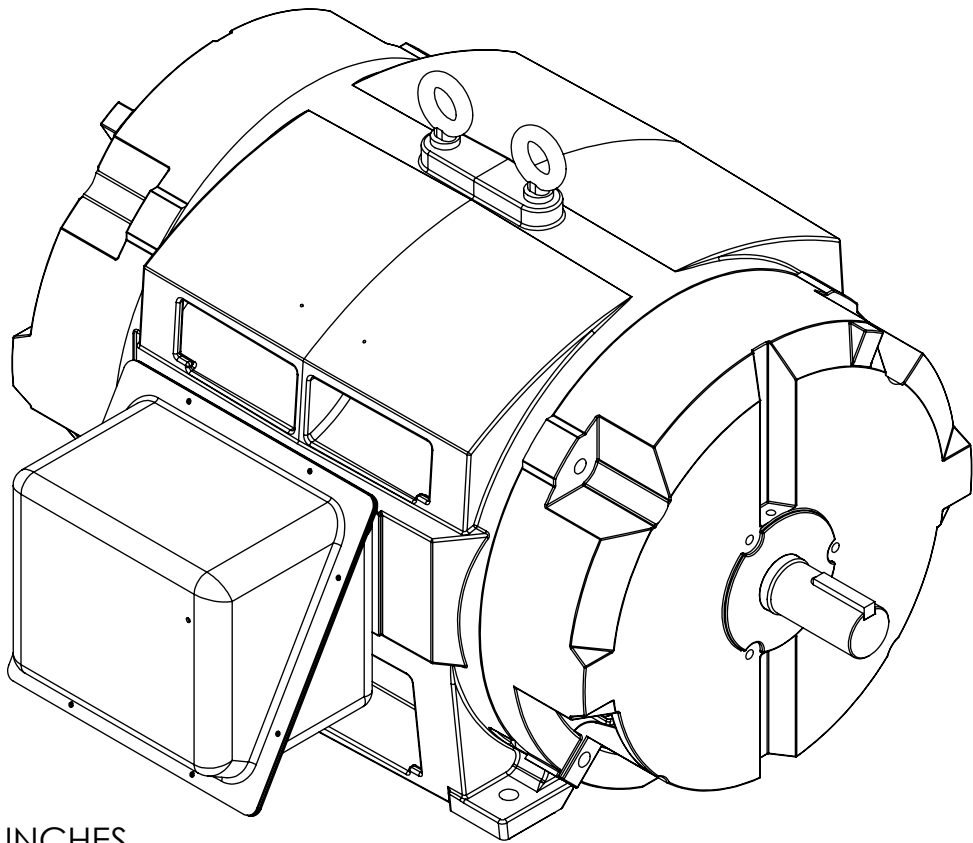
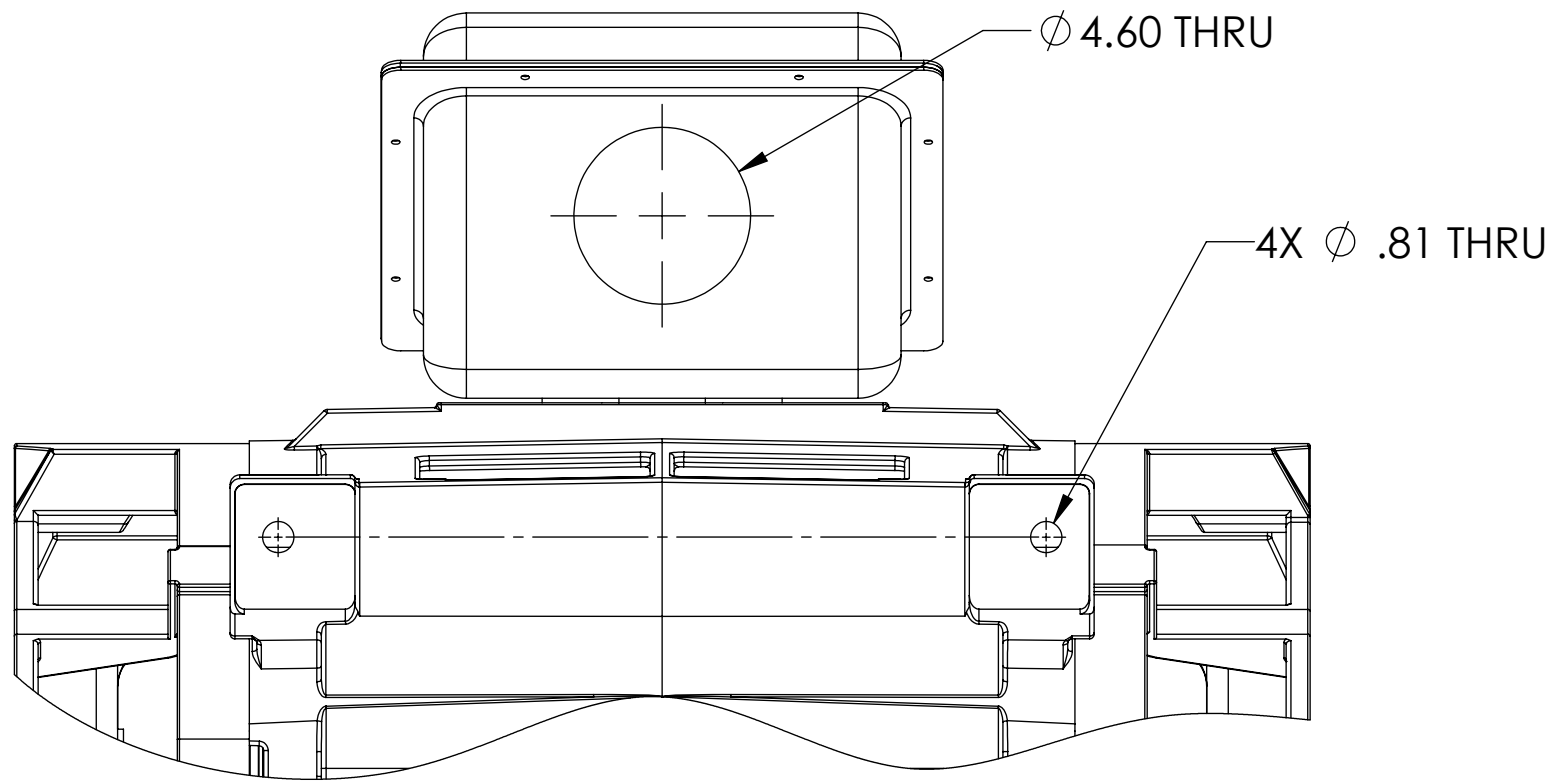
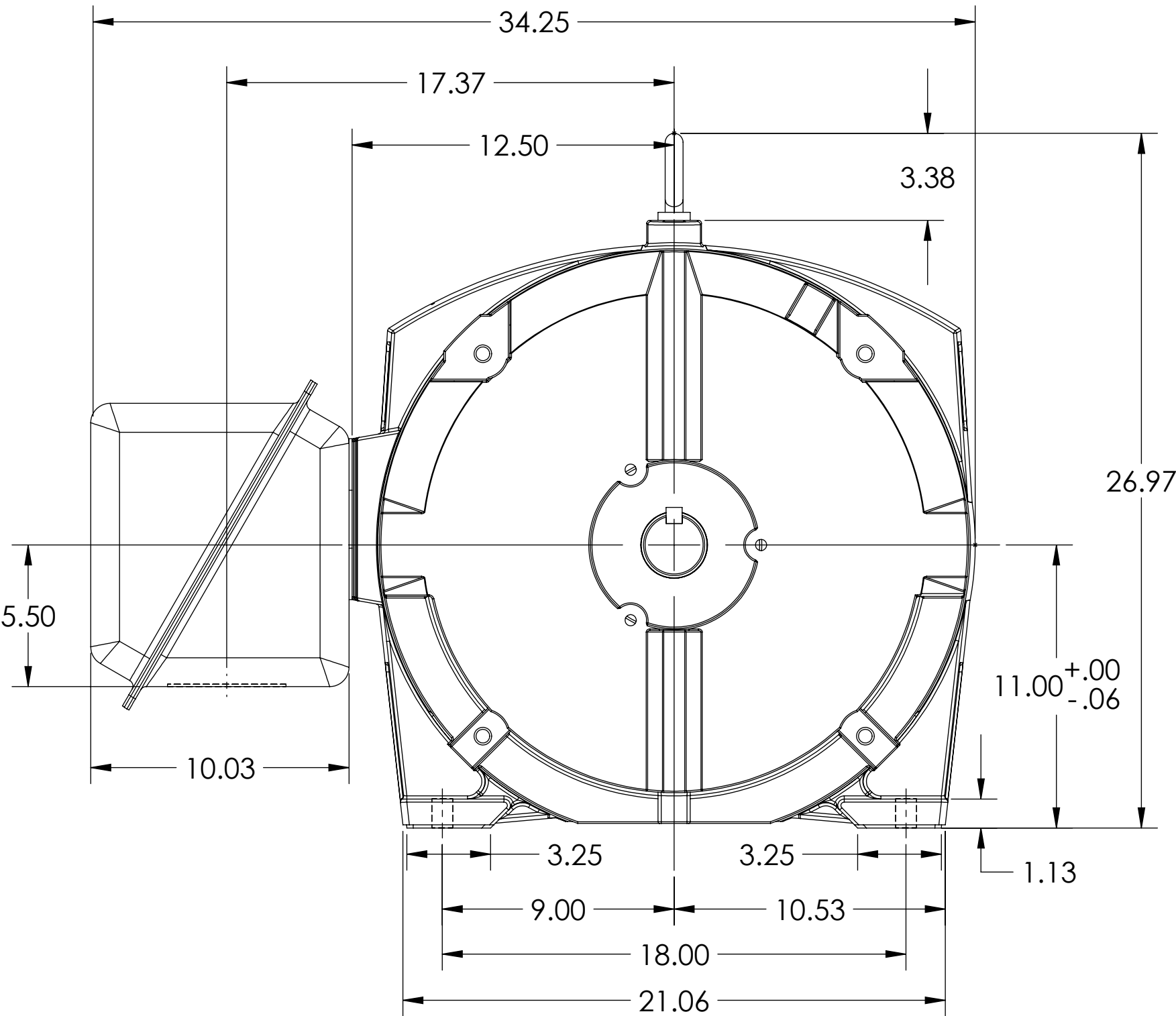
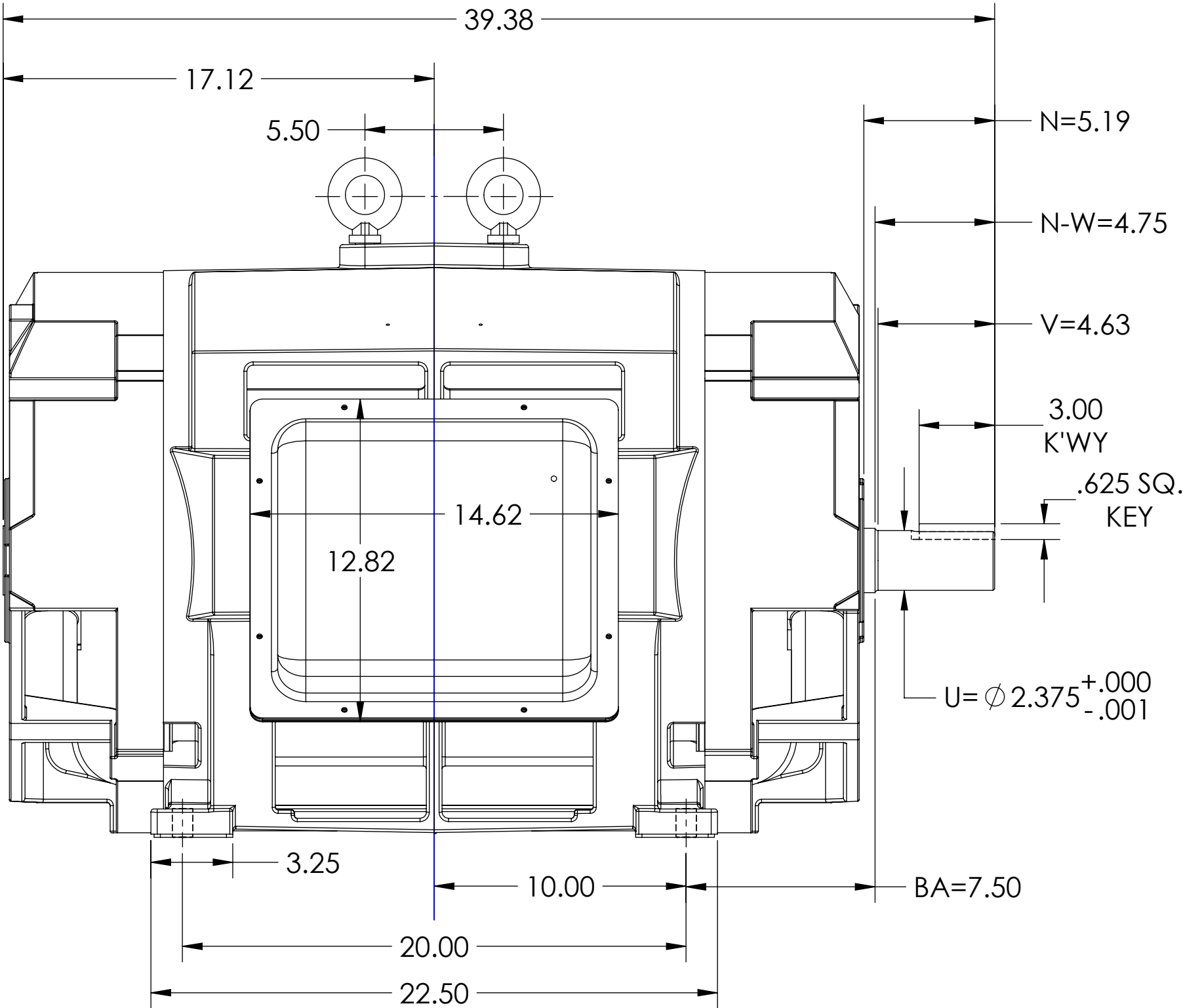
SQUIRREL-CAGE INDUCTION

COOLING: OPEN DRIP-PROOF

MOUNTING: FOOT, F-1

FRAME E447TS

STEEL CONDUIT BOX



DIMENSIONS ARE IN INCHES
CUSTOMER IS RESPONSIBLE FOR DETERMINING THAT MOTOR PERFORMANCE IS SUITABLE IN THE APPLICATION.

REV. DESC: CHANGING FROM 6318 TO 6313			
REV: A	VERSION: 01	REVISED: 01:57:27 03/02/2016	TDR: 000000968603
MODEL NO. 604989-483			
BY: RAGRA			

BALDOR

E447TS ODP FOOT - F1 - STEEL CONDUIT BOX

SHEET NUMBER
1 OF 1

604989-483