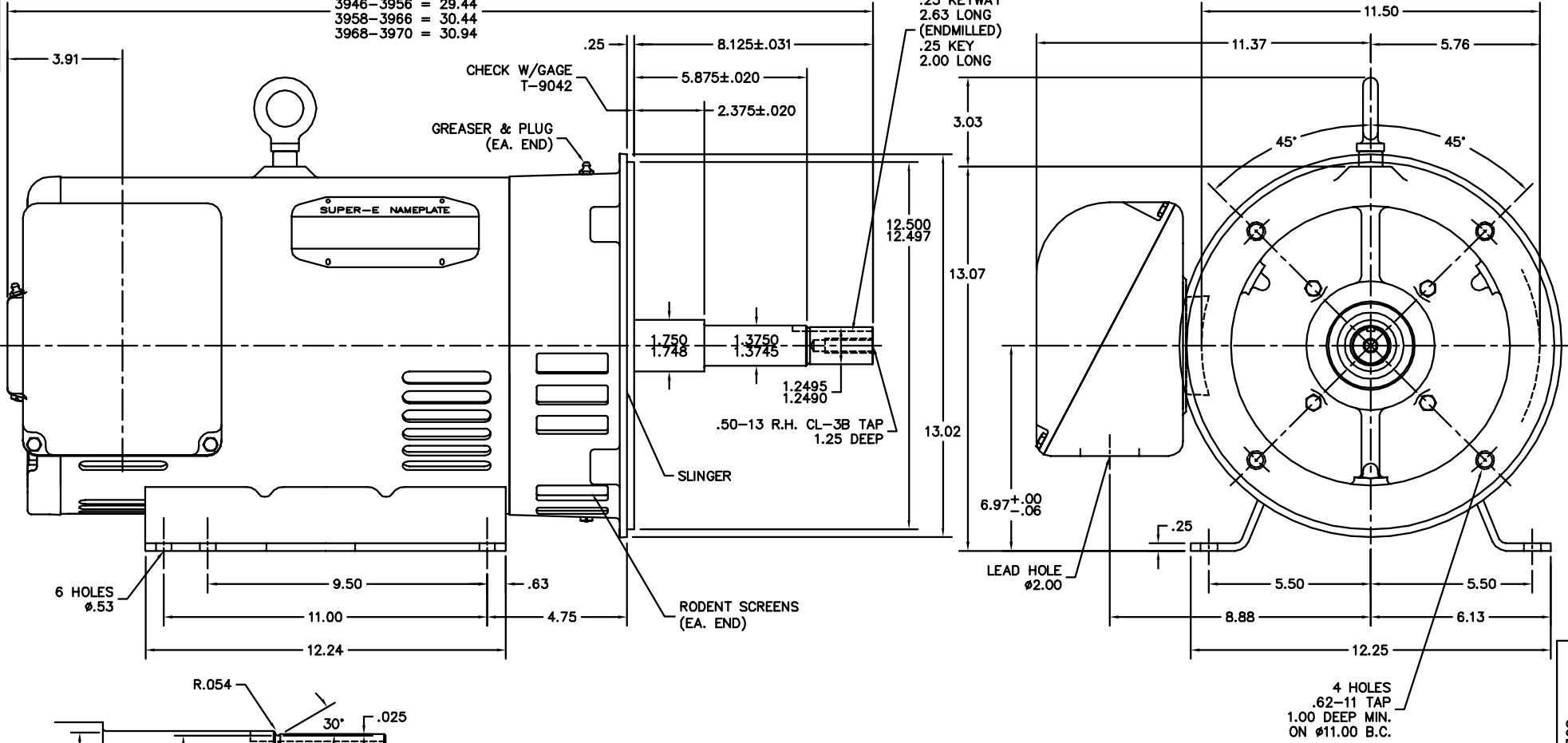


3920-3944 = 27.94
 3946-3956 = 29.44
 3958-3966 = 30.44
 3968-3970 = 30.94



CUSTOMER IS RESPONSIBLE FOR DETERMINING THAT BALDOR'S PRODUCT WILL PERFORM SUITABLY IN THE INTENDED APPLICATION.

REV. DESC: CHG PUEP 39EP1404A03 TO 39EP1404A09		
REV. LTR: D	VERSION: 04	TDR: 000001014103
FILE: \AAA\00163\288	REVISED: 02:04:38 02/06/2017	BY: USODDIL
MTL: -		

BALDOR

HOR OPSB 284-6JP W/312 BRG & ROD SCREENS, SUPER-E
 SH 1 of 1