

40LYE285

(4034 - 4056) = 21.19
(4058 - 4070) = 22.19
(4072 - 4074) = 22.69
(4076) = 22.69 (6 PL ONLY)

4.78

GREASER & PIPE PLUG
(EA. END)

SUPER-E NAMEPLATE

CHECK W/GUAGE
T-9041

5.25

3.00

.63

.25

.25 KEY
2.50 LONG

φ12.500
12.497

1.750
1.748

1.2495
1.2490

1.3750
1.3745

.50-13 R.H. TAP
1.25 DEEP

SLINGER

RODENT SCREENS
(EA. END)

6 HOLES
φ.66

10.50

12.00

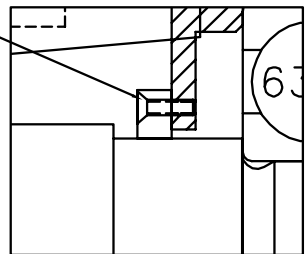
13.75

.88

5.26

PU END INT. SH. GND.

SHAFT GND.
(BP5305)



14.63

φ13.08

8.00^{+0.00}
-.06

LEAD HOLE
φ2.50

4.25

4 HOLES
.62-11 TAP
ON φ11.00 B.C.

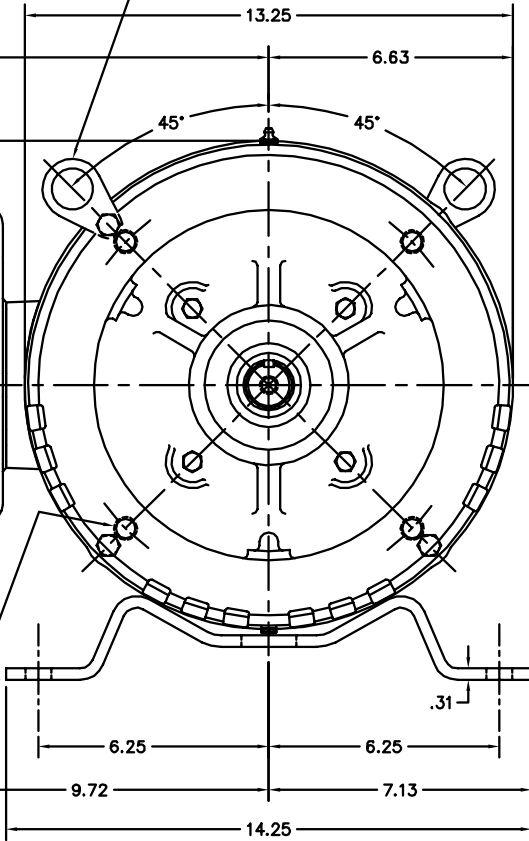
1 LIFTING LUG
(EA. END)
DIAGONALLY SPACED

13.25

6.63

45°

45°



LEAD HOLE
φ2.50

6.25

6.25

9.72

14.25

.31

CUSTOMER IS RESPONSIBLE FOR DETERMINING THAT BALDOR'S PRODUCT WILL PERFORM SUITABLY IN THE INTENDED APPLICATION.

REV. DESC: ADD SLINGER HA1005A06 TO PU.END		
REV. LTR: B	VERSION: 02	TDR: 000001112641
FILE: \AAA\00185\073	REVISED: 02:52:18 06/24/2019	BY: USODDIL
MTL: -		

BALDOR - RELIANCE®

HORZ OPSB 324-6JM W/RODENT SCREENS, SUPER-E, INT SH GND
SH 1 of 1

40LYE285