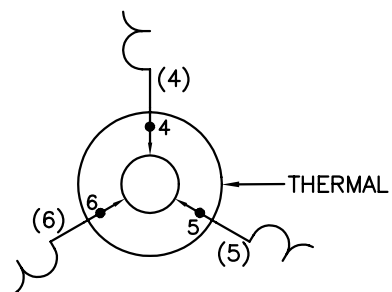


INTERNAL CONNECTION FOR THREE TERMINAL THERMAL



NOTES:

1. INTERCHANGE ANY TWO LINE LEADS TO REVERSE ROTATION.
2. ACTUAL NUMBER OF INTERNAL PARALLEL CIRCUITS MAY VARY.
3. LEAD COLORS ARE OPTIONAL. LEADS MUST ALWAYS BE NUMBERED AS SHOWN.

REV. DESC: CORRECT LEAD MARKING			
REV. LTR: F	BY: JLP	REVISED: 04/14/99 8:23	TDR: 0178963
FILE: AAA00008369		MDL: -	
MTL: -			

BALDOR ELECTRIC Co.

3PH, SV, THERMAL, 3 LEADS