

# DUTY MASTER ALTERNATING CURRENT MOTORS

ENCLOSURE: TOTALLY ENCLOSED

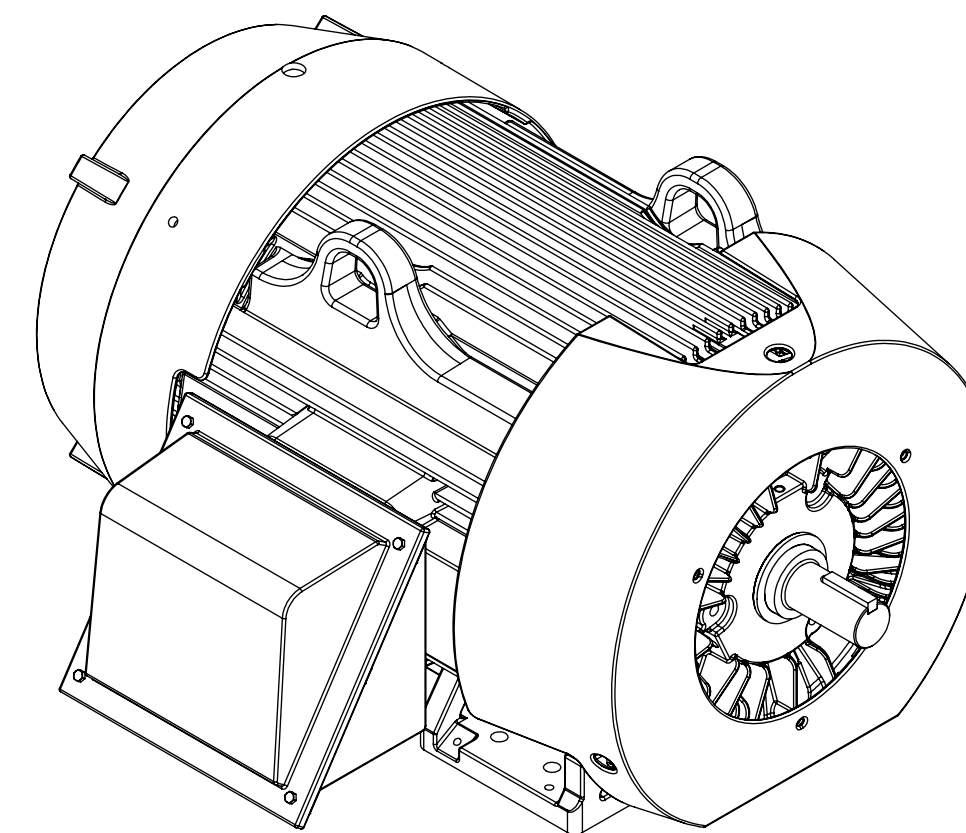
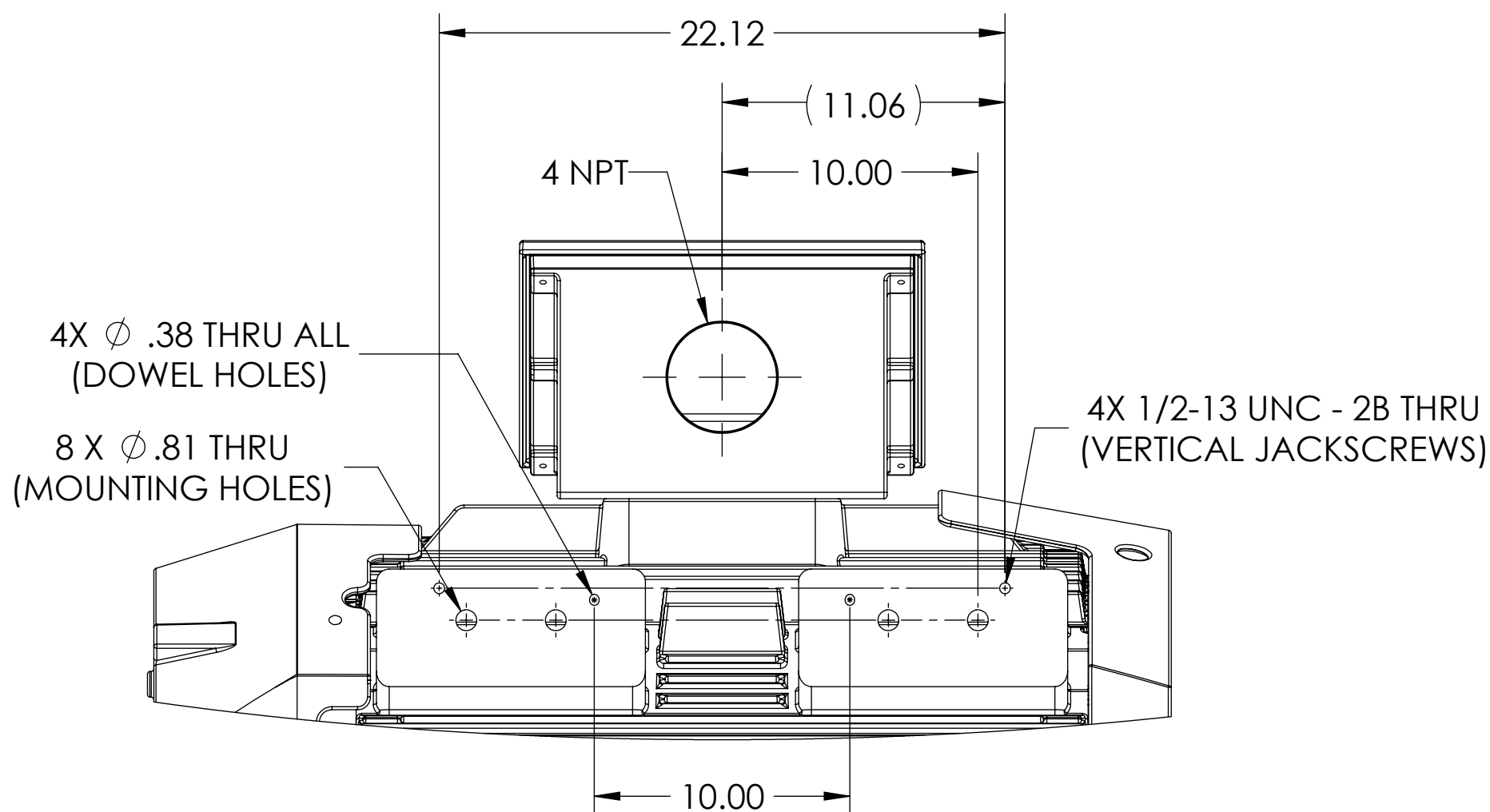
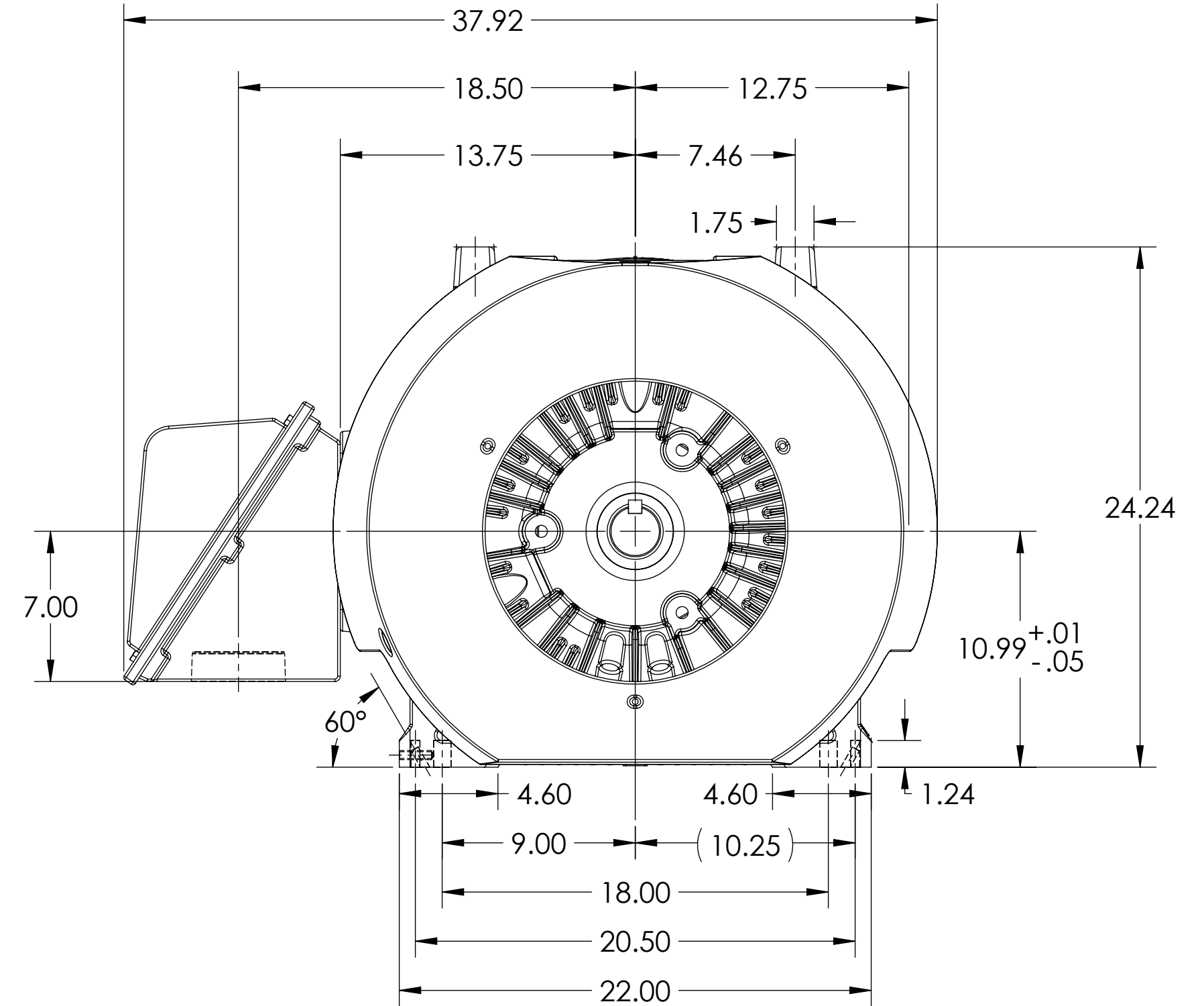
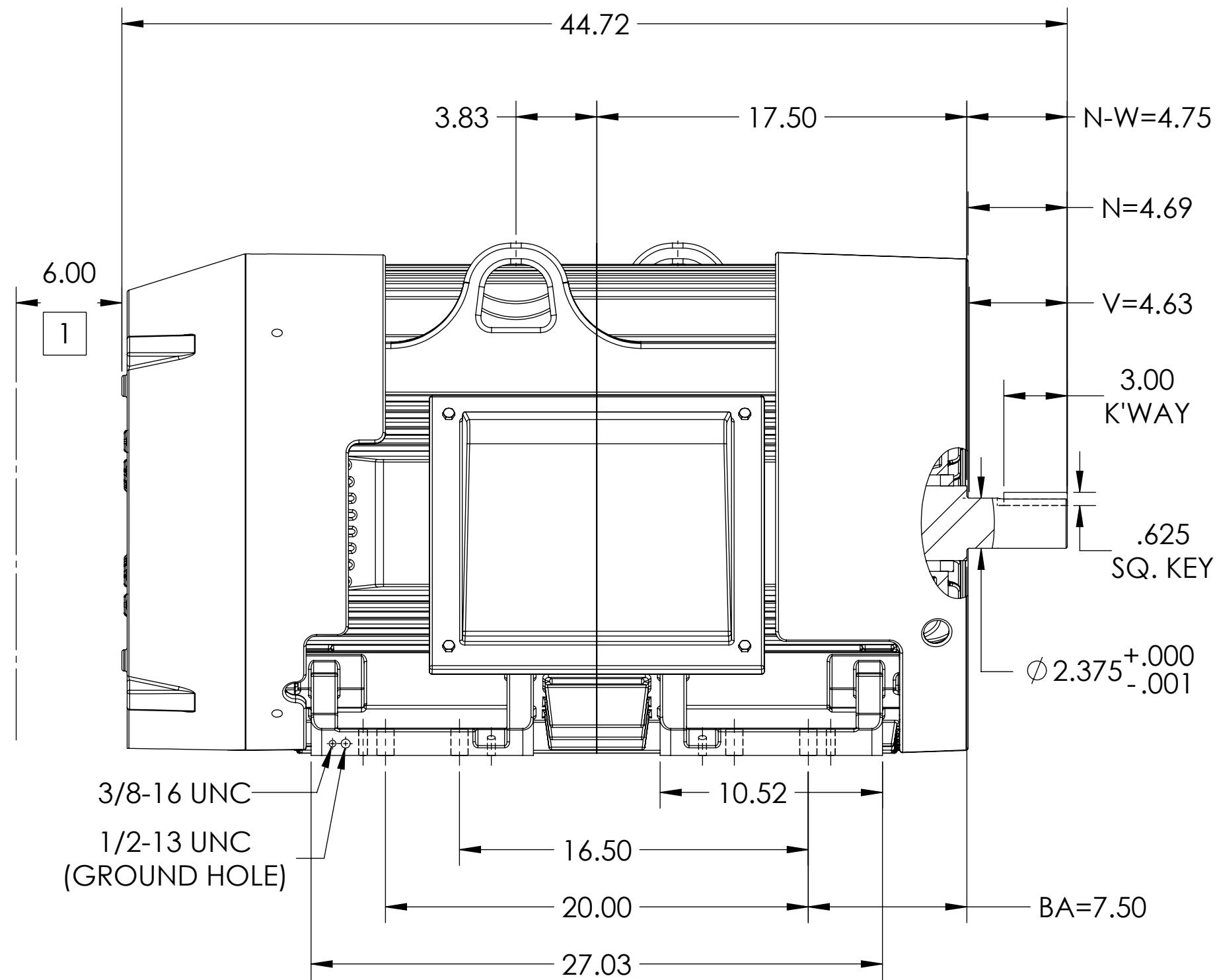
SQUIRREL-CAGE INDUCTION

COOLING: FAN COOLED

MOUNTING: FOOT, F-1 SIDE

G447TS/ G445TS FRAME MOUNTING HOLES

ENCLOSURE ENHANCEMENT: 841-XL



1 OBSTRUCTION MUST NOT ENCROACH ON AIR INLET.

IF MOUNTING CLEARANCE DETAILS ARE REQUIRED, CONSULT FACTORY.  
MAX PERMISSIBLE SHAFT RUNOUT WHEN MEASURED AT END OF SHAFT EXTENSION IS .0015 T.I.R.

DIMENSIONS ARE IN INCHES.  
WEIGHT (LBS): 2515, MOTOR WEIGHTS MAY VARY BY 15% DEPENDING ON RATING.  
CUSTOMER IS RESPONSIBLE FOR DETERMINING THAT MOTOR PERFORMANCE IS SUITABLE IN THE APPLICATION.

REV. DESC: ADD METRIC DS			
REV: A	VERSION: 01	REVISED: 08:38:03 12/18/2018	TDR: 000001093418
MODEL NO. 617435-474		REF:	
BY: USJEDIL	Material:	C	

**BALDOR**

G447/445TS TEFC FOOT F1 CAST IRON BOX/JACKSCREWS/DOWEL PINS

# DUTY MASTER ALTERNATING CURRENT MOTORS

ENCLOSURE: TOTALLY ENCLOSED

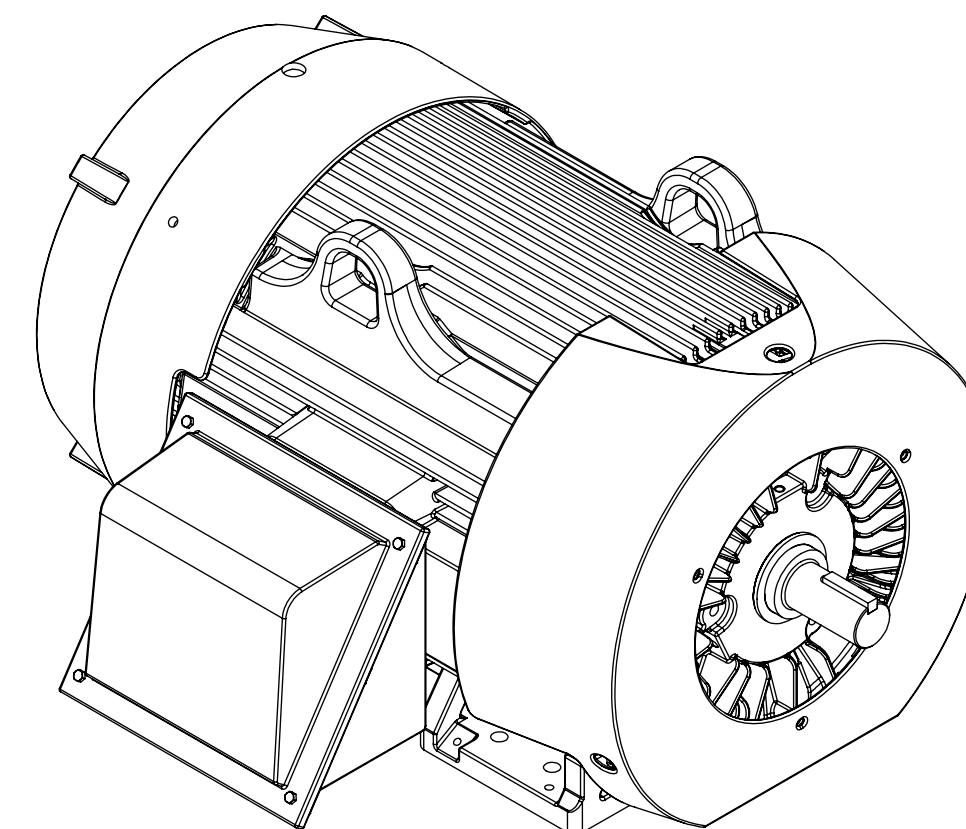
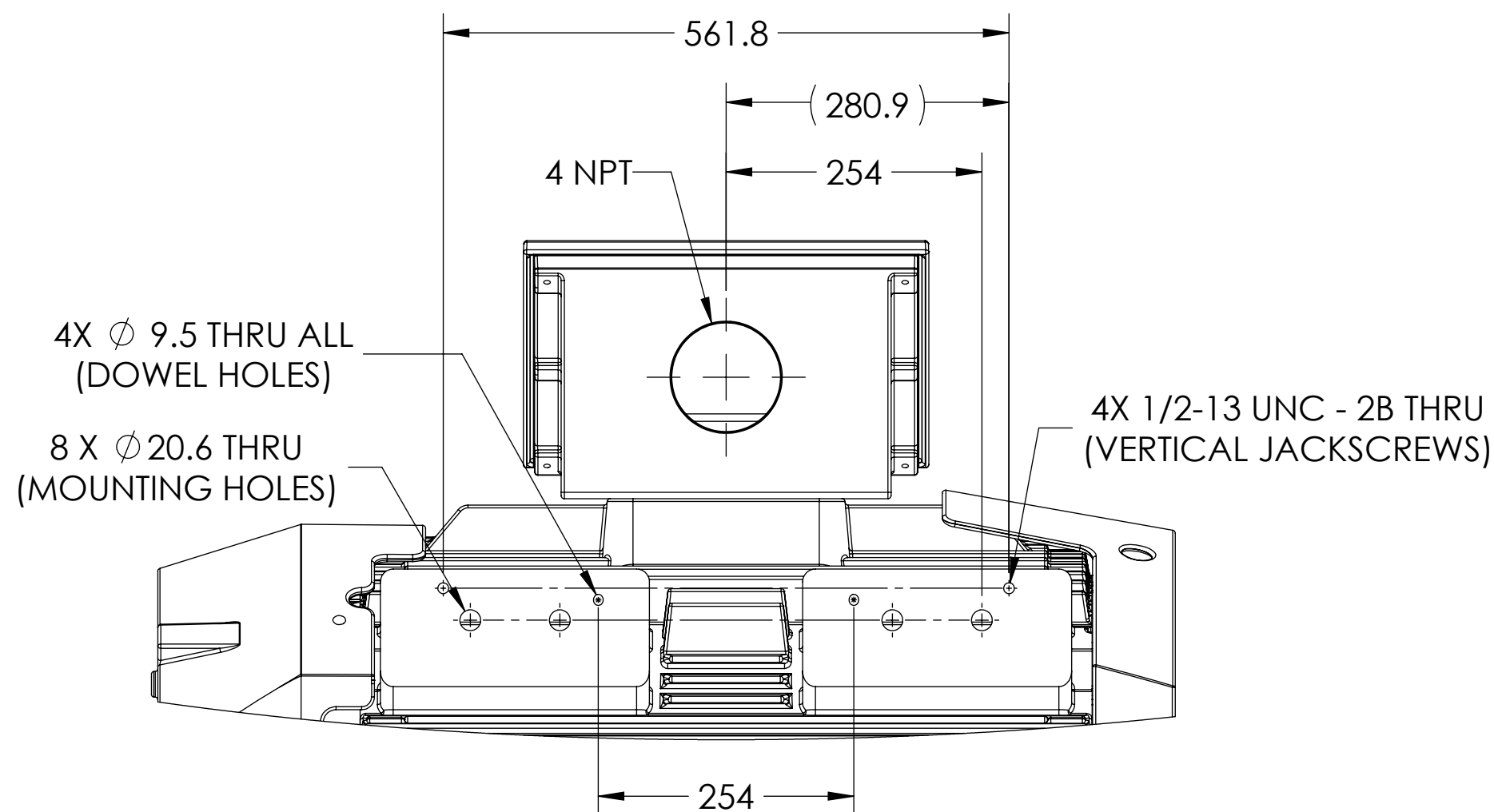
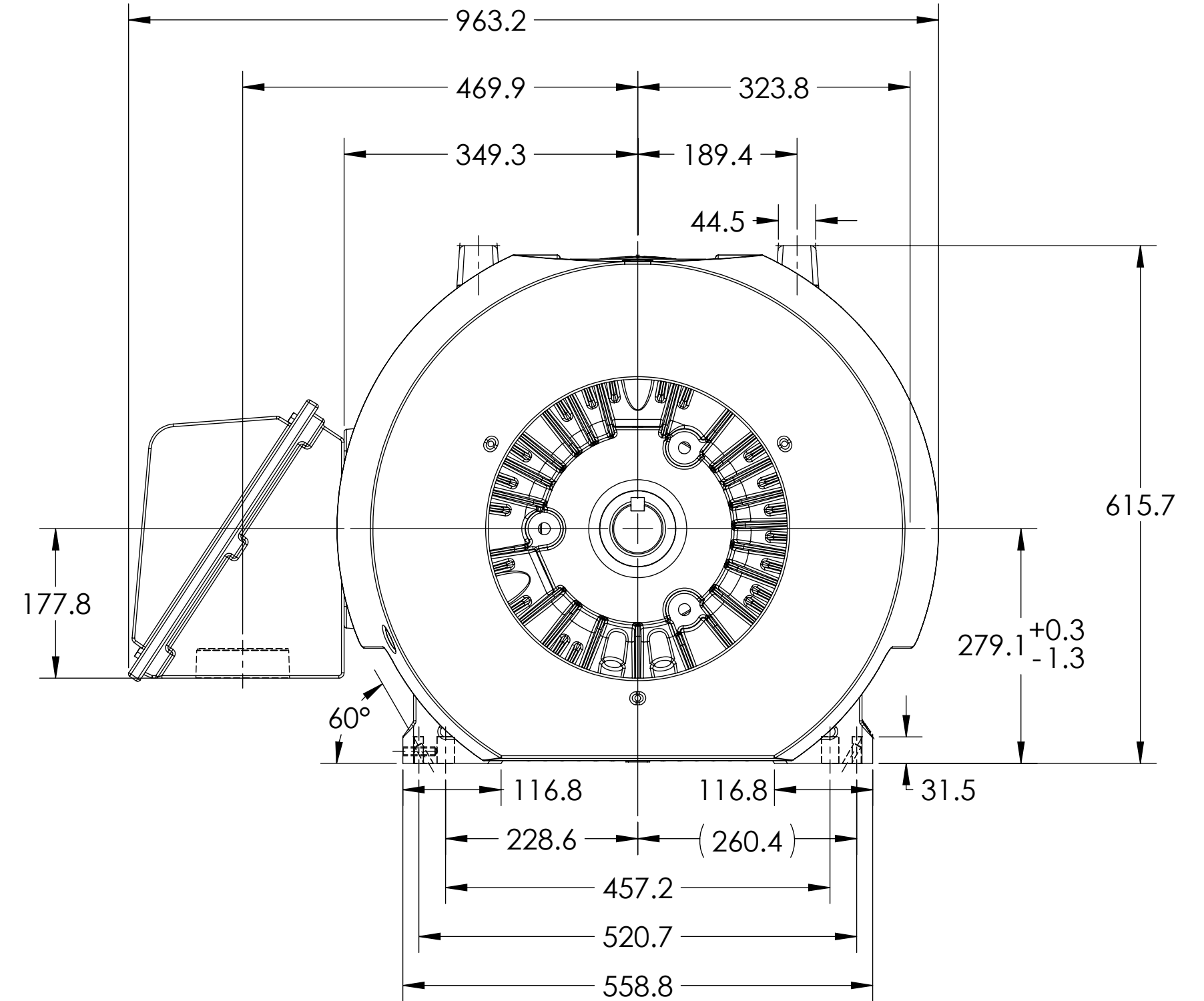
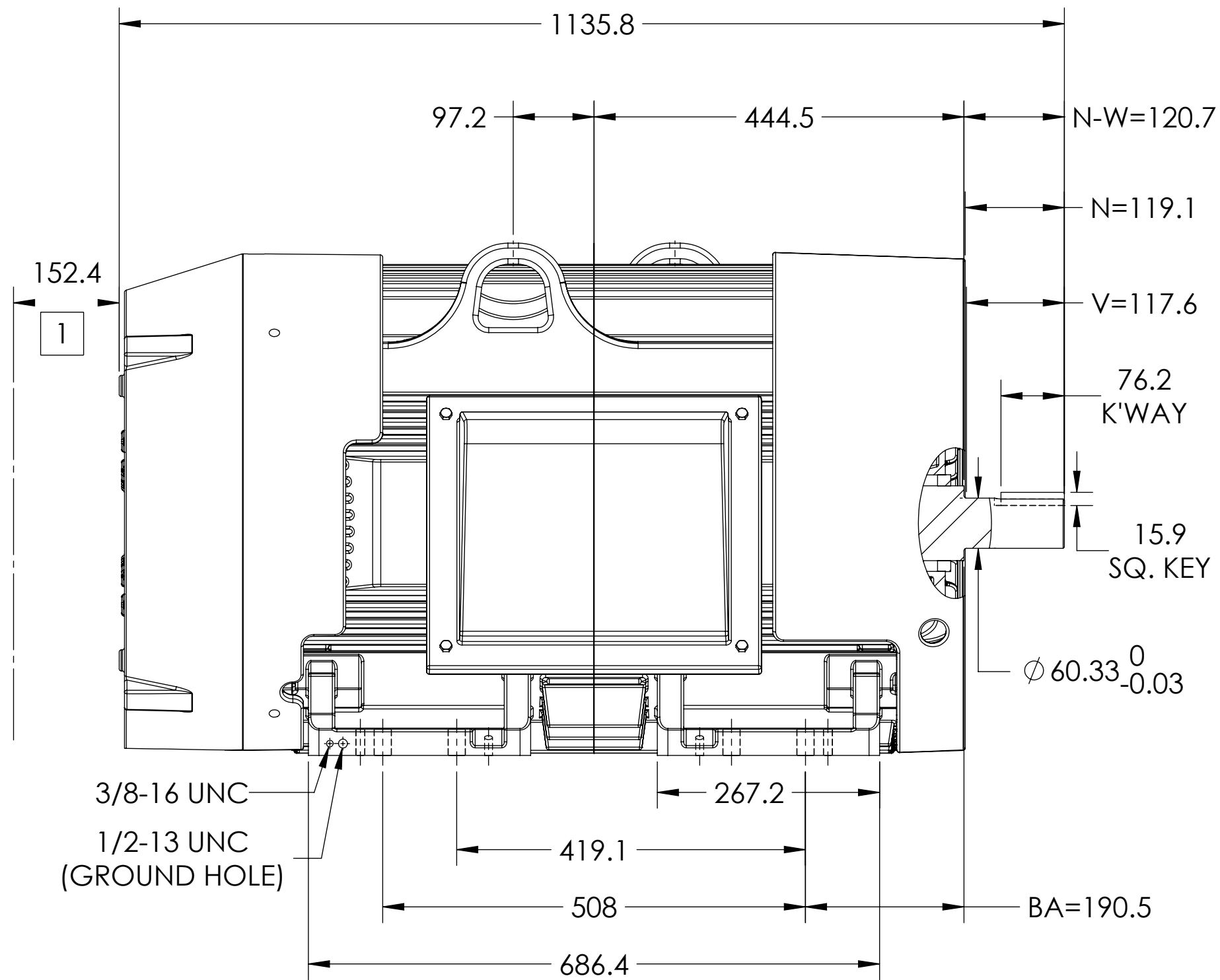
SQUIRREL-CAGE INDUCTION

COOLING: FAN COOLED

MOUNTING: FOOT, F-1 SIDE

G447TS/ G445TS FRAME MOUNTING HOLES

ENCLOSURE ENHANCEMENT: 841-XL



1 OBSTRUCTION MUST NOT ENCROACH ON AIR INLET.

IF MOUNTING CLEARANCE DETAILS ARE REQUIRED, CONSULT FACTORY.  
MAX PERMISSIBLE SHAFT RUNOUT WHEN MEASURED AT END OF SHAFT EXTENSION IS .04 T.I.R.

DIMENSIONS ARE IN MILLIMETERS.  
WEIGHT (KGS): 1141, MOTOR WEIGHTS MAY VARY BY 15% DEPENDING ON RATING.  
CUSTOMER IS RESPONSIBLE FOR DETERMINING THAT MOTOR PERFORMANCE IS SUITABLE IN THE APPLICATION.

REV. DESC: ADD METRIC DS			
REV: A	VERSION: 01	REVISED: 08:38:03 12/18/2018	TDR: 000001093418
MODEL NO. 617435-474		REF:	
BY: USJEDIL	Material:	C	

**BALDOR**

G447/445TS TEFC FOOT F1 CAST IRON BOX/JACKSCREWS/DOWEL PINS