

DUTY MASTER ALTERNATING CURRENT MOTORS

SQUIRREL-CAGE INDUCTION
CAST IRON CONSTRUCTION

ENCLOSURE: TOTALLY ENCLOSED
MOUNTING: FOOT

FRAMES 364T-365T
661-XL WITH STANDARD CONDUIT BOX

COOLING: FAN COOLED

617428-022

D

D

C

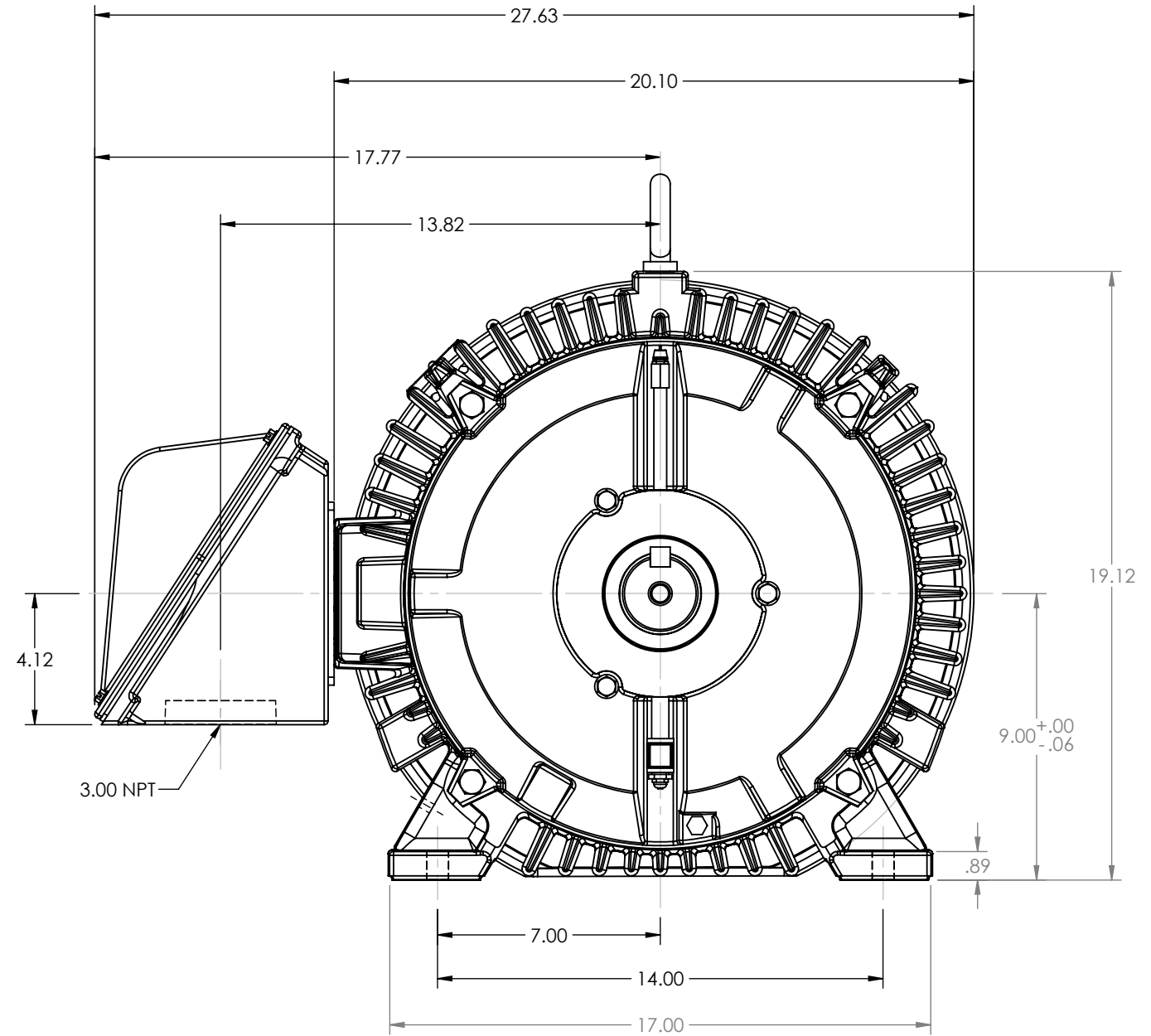
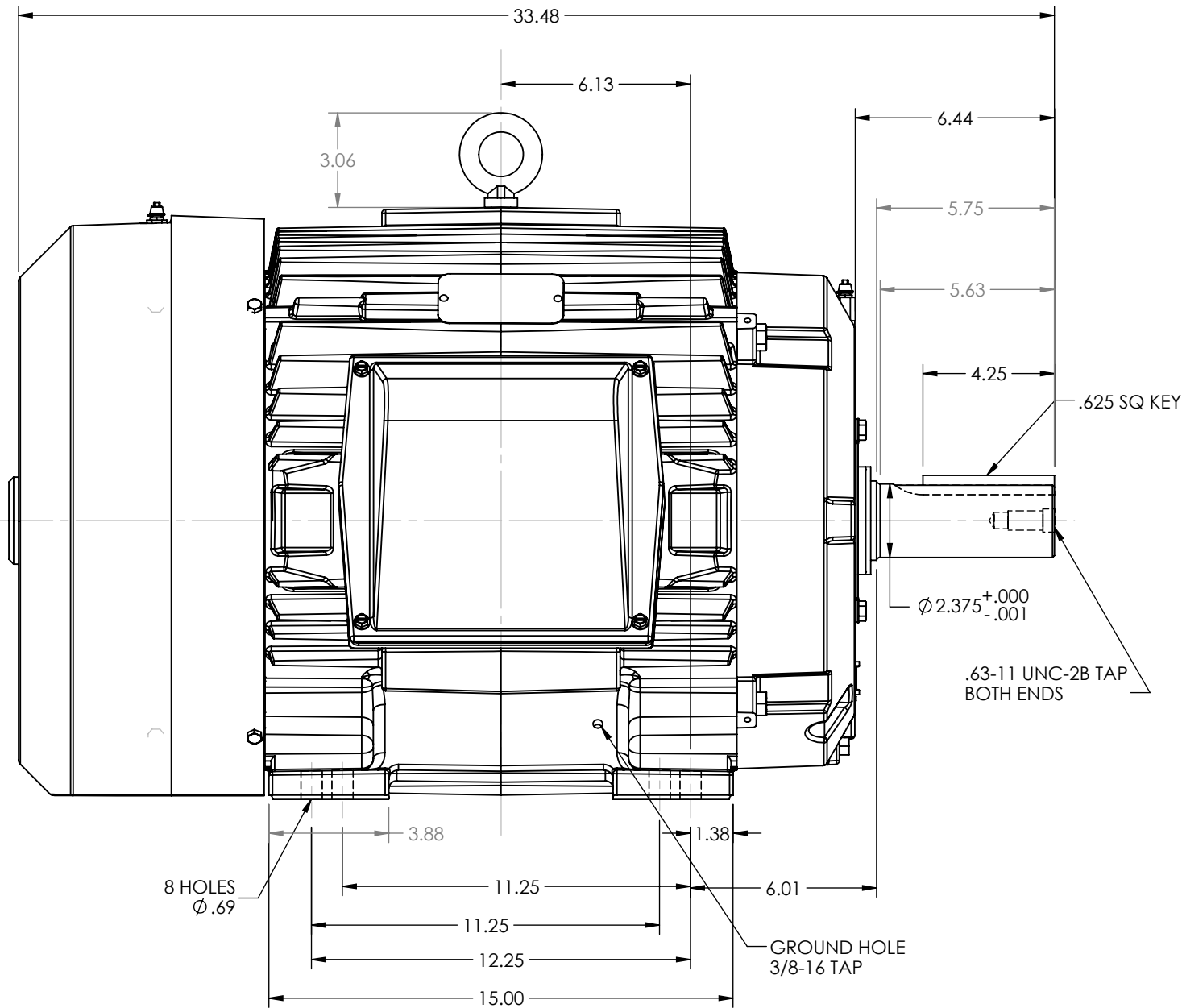
C

B

B

A

A



MAXIMUM PERMISSIBLE SHAFT RUNOUT WHEN MEASURED AT END OF STD. SHAFT EXTENSION IS .002 T.I.R. UP TO AND INCLUDING 1.625 DIA. AND .003 T.I.R. 1.625 DIA. TO 5 INCH DIA.

WEIGHT (LBS): 364T = 865
365T = 890

MOTOR WEIGHTS MAY VARY BY 15% DEPENDING UPON RATING.

CUSTOMER IS RESPONSIBLE FOR DETERMINING THAT BALDOR'S PRODUCT WILL PERFORM SUITABLY IN THE INTENDED APPLICATION

REV. DESC: NEW FROM 617418-001			
REV: -	VERSION: 00	REVISED: 03:05:27 12/10/2013	TDR: 000000814505
MODEL NO. 617428-022			REF:
BY: RAGJSS1			B

BALDOR

DIM SHEET-TEFC 364-5T,661-XL W/ STD C/BOX (617418-001)

617428-022

8

7

6

5

4

3

2

1