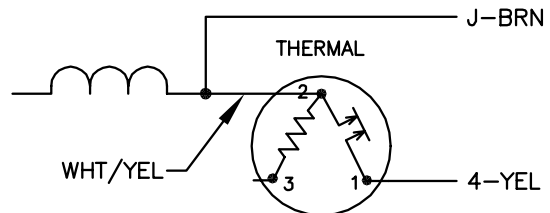


	LINE A	LINE B	JOIN
STD	1,8	4	J,5
OPP	1,5	4	J,8

NOTES:

1. STANDARD ROTATION IS CCW FACING END OPPOSITE SHAFT EXTENSION.
2. MULTIPLE CAPACITORS ARE CONNECTED IN PARALLEL UNLESS OTHERWISE SPECIFIED.
3. DRESS LEADS AWAY FROM RELAY TO AVOID INTERFERENCE.
4. CAPS AND RELAY MAY BE SEPARATELY MOUNTED.
5. LEAD COLORS ARE OPTIONAL. LEADS MUST ALWAYS BE NUMBERED AS SHOWN.

BYPASSING THE HEATER OF A THREE-TERMINAL THERMAL



REV. DESC: NEW	VERSION: 00	TDR: 000000373928
REV. LTR: -	FILE: \AAA\00129\270	REVISED: 15: 59: 20 08/19/2005
10V9331C0	MTL: -	BY: ENJOEPO

**BALDOR ELECTRIC Co.**

TYPE LC, SV, REV, 2-TERMINAL THERMAL, 5LD, RELAY W/CENT SW