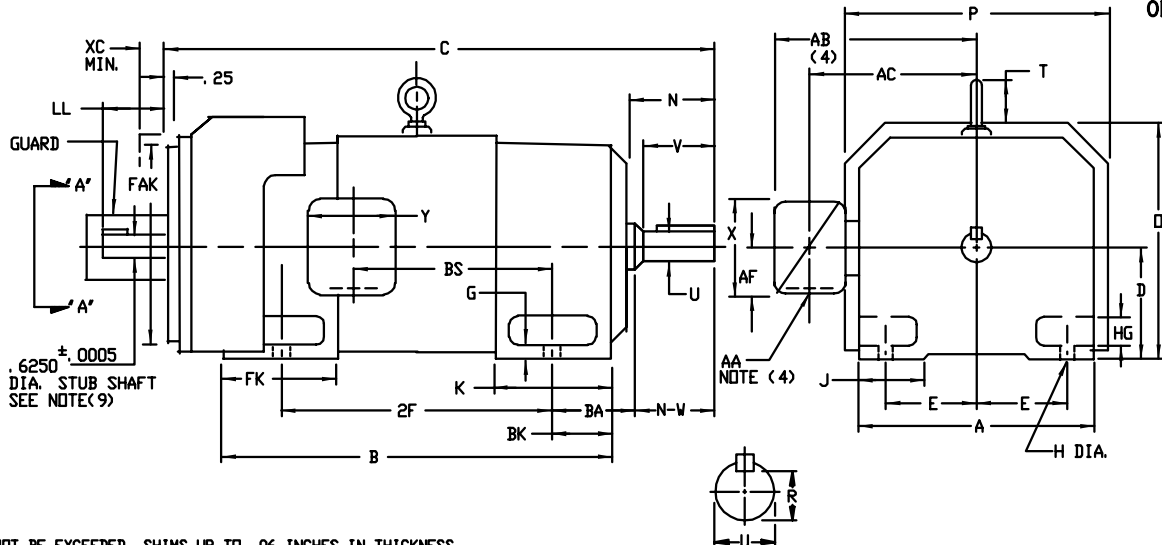
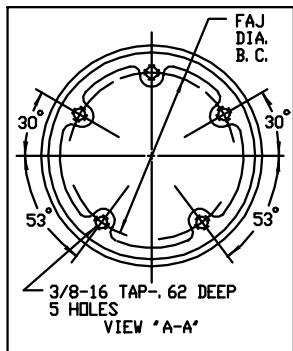


INDUSTRIAL DIRECT CURRENT MOTORS AND GENERATORS - RPM III

ENCLOSURE: TOTALLY ENCLOSED
MOUNTING: FOOT

FRAMES SC3210ATZ THRU ULLC3612ATZ

COOLING: FAN COOLED
ACCESSORIES: PROVISION FOR
TACHOMETER MOUNTING
ONLY WHEN SPECIFIED



TACHOMETER	LL
BC-42 BC-46 RD-11 RD-12 RD-51 RD-61 RD-62 RE-210 M627,M628 M727,M737 M738 DYNAPAR 74S	4.25
RE-045G WITH K45M1000 5PY	2.12

- (1) "D" DIMENSION WILL NOT BE EXCEEDED. SHIMS UP TO .06 INCHES IN THICKNESS ARE USUALLY REQUIRED FOR COUPLED OR GEARED MACHINES.
- (2) "U" VARIES +.000 - .001
- (3) "R" VARIES +.000 - .015
- (4) TERMINAL BOX VARIES WITH H.P. FOR DIMENSIONS "AA", "AB", "AC", "AF", "X" AND "Y", SEE DRAWING NUMBER 609979-1.
- (5) DIMENSION FOR FRAMES WITH PREFIX LSC, LMC, LLC, ULMC, OR ULLC.
- (6) METHOD OF DRIVE: COUPLED OR BELTED.
- (7) WALLS OR OBSTRUCTIONS MUST NOT ENCRDACH ON AIR INLET SPACE "XC".
- (8) "FAK" VARIES +.000 - .005 ---FACE ROUNDT AND ECCENTRICITY .007 MAX. T. I. R. TERMINAL BOX LOCATED ON OPPOSITE SIDE WHEN F-2, W-1, W-4, W-5, W-7, OR C-1 MOUNTING IS SPECIFIED. BOX LOCATED ON TOP WHEN SPECIFIED.
- (9) STUB SHAFT SUPPLIED ONLY WHEN SPECIFIED. KEY SIZE .188 X .188 X 1.00. MOTOR WEIGHT MAY VARY 15% FOR NON-STANDARD RATINGS AND/OR ACCESSORIES. IF MOUNTING CLEARANCE DETAILS ARE REQUIRED, CONSULT FACTORY.

DIMENSIONS ARE IN INCHES

FRAME	A	DK(1)	E	G	H	HG	J	D	P	T	BA	K	FK		FAJ	FAK(8)	XC(7)	
													STD.	LG.(5)				
SC3210ATZ-LLC3212ATZ	15.50	8.00	6.25	.75	.69	2.25	3.00	17.00	18.00	3.12	5.25	6.75	7.94	10.44	4.00	13.00	14.500	1.25
SC3612ATZ-ULLC3612ATZ	17.50	9.00	7.00	.88	.81	2.62	3.50	19.00	20.00	3.12	5.88	7.25	8.56	10.31	4.62	15.25	16.750	1.25

FRAME	METHOD OF DRIVE	C		B		BS	2F	N	N-V	UK(2)	V	R(3)	SQ	LGTH.	WT. LBS.
		STD.	LG.(5)	STD.	LG.(5)										
SC3210ATZ-LSC3210ATZ	(6)	40.56	43.06	28.31	30.81	3.38	20.00	5.50	5.25	2.625	5.00	2.275	.625	4.00	1150
MC3212ATZ-LMC3212ATZ	(6)	43.56	46.06	31.31	33.81	3.68	25.00	5.50	5.25	2.625	5.00	2.275	.625	4.00	1245
LC3212ATZ-LLC3212ATZ	(6)	45.56	48.06	33.31	35.81	3.98	25.00	5.50	5.25	2.625	5.00	2.275	.625	4.00	1325
MC3612ATZ-LMC3612ATZ	COUPLED	47.69	49.44	34.44	36.19	3.82	28.00	6.00	5.75	2.875	5.50	2.450	.750	4.25	1740
UMC3612ATZ-ULMC3612ATZ	BELTED	48.44	50.19	34.44	36.19	3.82	28.00	6.75	6.50	3.250	6.25	2.831	.750	5.00	1750
LC3612ATZ-LLC3612ATZ	COUPLED	51.44	53.19	38.19	39.94	2.88	28.00	6.00	5.75	2.875	5.50	2.450	.750	4.25	1905
ULLC3612ATZ-ULLC3612ATZ	BELTED	52.19	53.94	38.10	39.94	2.88	28.00	6.75	6.50	3.250	6.25	2.831	.750	5.00	1915

CUSTOMER IS RESPONSIBLE FOR DETERMINING THAT BALDOR'S PRODUCT WILL PERFORM SUITABLY IN THE INTENDED APPLICATION.

REV. DESC: CHANGE LAYOUT OF DRAWING	VERSION: 01	TDR: 00000767673
REV. LTR: A	REVISED: 07:49:39 10/03/2012	BY: RGGWT
FILE: \RGG\00015\623		
MTL: -		

BALDOR

DIMENSION DRAWING, SC3210ATZ - ULLC3612ATZ, TEFC, FOOT MTG
SH 1 of 1