

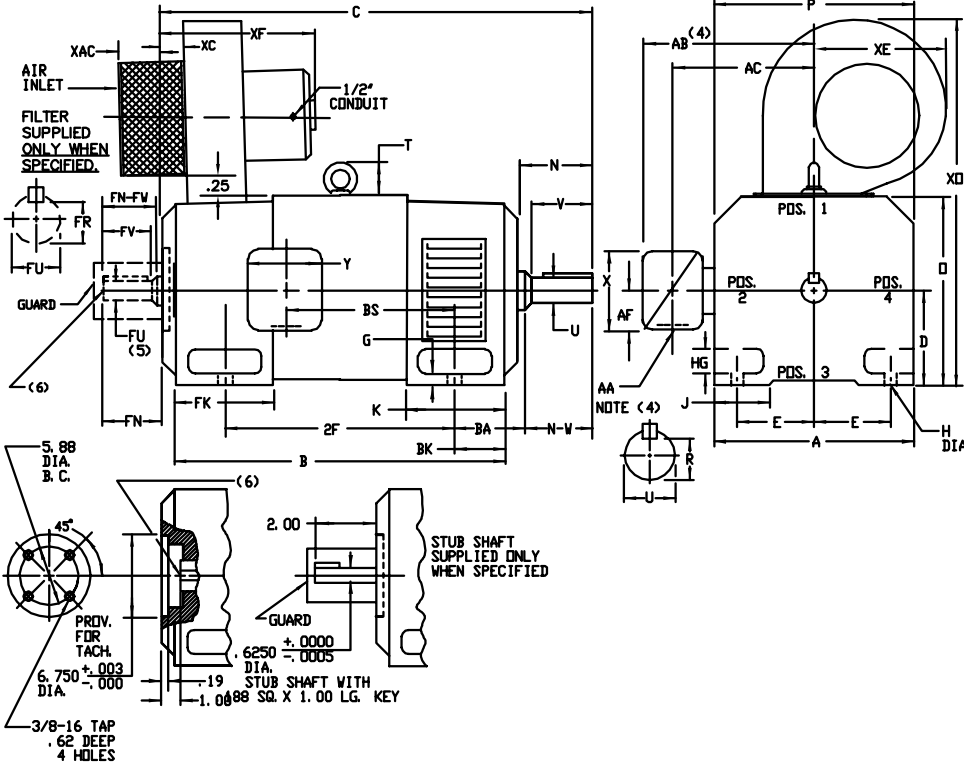
INDUSTRIAL DIRECT CURRENT MOTORS AND GENERATORS - RPM III

ENCLOSURE: DRIP-PROOF FULLY-GUARDED
SPLASHPROOF
MOUNTING: FOOT

COOLING: FORCE VENTILATED
WITH INTEGRAL
BLOWER AND MOTOR

ACCESSORIES: PROVISION FOR
TACHOMETER MOUNTING
ONLY WHEN SPECIFIED

FRAMES SC3210ATZ THRU ULC3214ATZ



DIMENSIONS ARE IN INCHES

FRAME	XAC	XC	XE	XF	XO
SC3210ATZ-ULC3214ATZ	6.75	3.25	8.50	19.25	28.00

FRAME	A	D(1)	E	G	H	HG	J	O	P	T	FK				
											STD.	LG.(B)	BK		
SC3210ATZ-ULC3214ATZ	15.50	8.00	6.25	.75	.69	2.25	3.00	15.81	15.62	3.54	5.25	6.75	7.94	10.44	4.00

FRAME	METHOD OF DRIVE	C(7)		B		BS		2F		DRIVE END SHAFT AND KEY					OPPOSITE DRIVE END SHAFT AND KEY (3)					WT. LBS.		
		STD.	LG.(B)	STD.	LG.(B)	STD.	LG.(B)	N	N-W	U(2)	V	R(3)	SQ	LGTH.	FN	FN-FW	FU(2)	FV	FR(3)		SQ	LGTH.
SC3210ATZ- LSC3210ATZ	COUPLED	36.25	38.75	28.31	30.81	13.38	20.00	5.50	5.25	2.625	5.00	2.275	6.25	4.00	4.75	4.50	2.250	4.25	1.972	3.00	3.25	1115
USC3210ATZ-ULC3210ATZ	BELTED	36.75	39.25	28.31	30.81	13.38	20.00	6.00	5.75	2.875	5.50	2.450	7.50	4.25	4.75	4.50	2.250	4.25	1.972	3.00	3.25	1120
MC3212ATZ- LMC3212ATZ	COUPLED	39.25	41.75	31.31	33.81	16.38	25.00	5.50	5.25	2.625	5.00	2.275	6.25	4.00	4.75	4.50	2.250	4.25	1.972	3.00	3.25	1210
UMC3212ATZ-ULMC3212ATZ	BELTED	39.75	42.25	31.31	33.81	16.38	25.00	6.00	5.75	2.875	5.50	2.450	7.50	4.25	4.75	4.50	2.250	4.25	1.972	3.00	3.25	1215
LC3212ATZ- LLC3212ATZ	COUPLED	41.25	43.75	33.31	35.81	18.38	25.00	5.50	5.25	2.625	5.00	2.275	6.25	4.00	4.75	4.50	2.250	4.25	1.972	3.00	3.25	1290
ULC3212ATZ-ULLC3212ATZ	BELTED	41.75	44.25	33.31	35.81	18.38	25.00	6.00	5.75	2.875	5.50	2.450	7.50	4.25	4.75	4.50	2.250	4.25	1.972	3.00	3.25	1295
C3214ATZ- LC3214ATZ	COUPLED	46.25	48.75	38.31	40.81	23.38	32.00	5.50	5.25	2.625	5.00	2.275	6.25	4.00	4.75	4.50	2.250	4.25	1.972	3.00	3.25	1470
UC3214ATZ- ULC3214ATZ	BELTED	46.75	49.25	38.31	40.81	23.38	32.00	6.00	5.75	2.875	5.50	2.450	7.50	4.25	4.75	4.50	2.250	4.25	1.972	3.00	3.25	1475

- (1) 'D' DIMENSION WILL NOT BE EXCEEDED. SHIMS UP TO .06 INCHES IN THICKNESS ARE USUALLY REQUIRED FOR COUPLED OR GEARED MACHINES.
- (2) 'U' AND 'FU' VARY ---+.000 ---.001
- (3) 'R' AND 'FR' VARY ---+.000 ---.015
- (4) TERMINAL BOX VARIES WITH H.P. FOR DIMENSIONS 'AA', 'AB', 'AC', 'AF', 'X' AND 'Y'. REFER TO BOX D/S. (STD. 609979-1, 'X/P' 609979-2, WILL 609979-3)
- (5) OPPOSITE DRIVE END SHAFT SUPPLIED ONLY WHEN SPECIFIED.
- (6) MOTOR SHAFT TAPPED FOR SCREW IN STUB SHAFT.
- (7) WHEN THE MOTOR APPLICATION DOES NOT REQUIRE THE USE OF DPP, DRIVE END, ADD .25 TO 'C' DIM. FOR BRACKET COVER.
- (8) DIMENSION FOR FRAMES WITH PREFIX LSC, LMC, LLC, LC, ULC, ULMC, ULLC OR ULC.
- (9) 'XG' DIMENSION IS NOT APPLICABLE TO 'C3214ATZ' FRAMES (BLOWER MOTOR IS CENTERED ON SHAFT C/L).

TERMINAL BOX CAN BE ROTATED FOR LEAD OUTLET AT TOP, SIDES OR BOTTOM.
TERMINAL BOX LOCATED ON OPPOSITE SIDE WHEN F-2, W-1, V-4, V-5, V-7, OR C-1 MOUNTING IS SPECIFIED.
BOX LOCATED ON TOP WHEN SPECIFIED.
BLOWER ASSEMBLY CAN BE LOCATED AT POSITIONS 1, 2 OR 4, EXCEPT BLOWER ASSEMBLY AND TERMINAL BOX CAN NOT BE LOCATED AT THE SAME POSITION.
MOTOR WEIGHT MAY VARY 15% FOR NON-STANDARD RATINGS AND/OR ACCESSORIES.
IF MOUNTING CLEARANCE DETAILS ARE REQUIRED, CONSULT FACTORY.

CUSTOMER IS RESPONSIBLE FOR DETERMINING THAT BALDOR'S PRODUCT WILL PERFORM SUITABLY IN THE INTENDED APPLICATION.

REV. DESC: LOADED TO BUS	VERSION: 00	TDR: 000000578087
REV. LTR: -	REVISED: 03:36:51 01/28/2011	BY: CONNAS
FILE: \RGG\00016\040		
MTL: -		

BALDOR

DIMENSION DRAWING, SC3210ATZ - ULC3214ATZ, DPP, FOOT MTG

SH 1 of 1