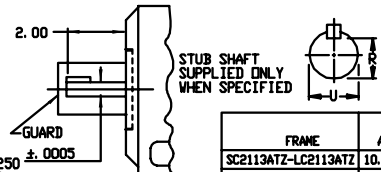
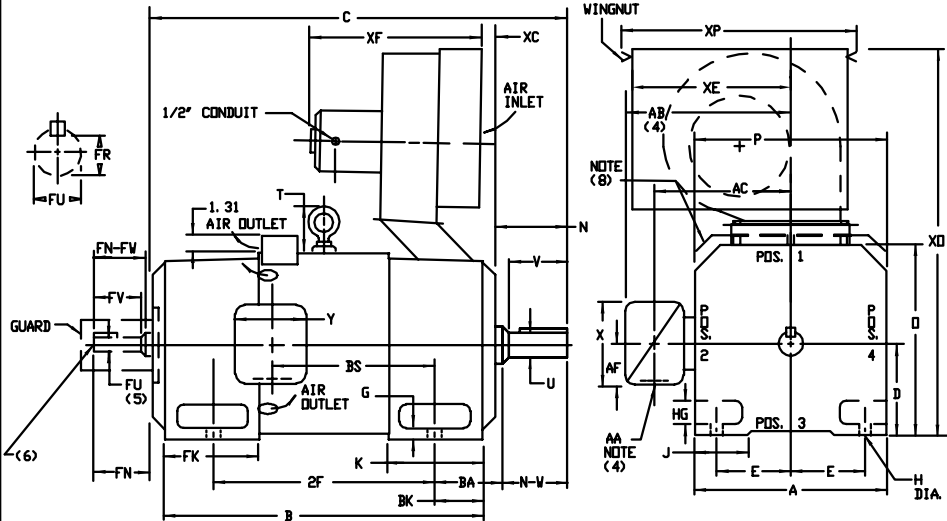


INDUSTRIAL DIRECT CURRENT MOTORS AND GENERATORS - RPM III

ENCLOSURE: DRIP-PROOF FULLY-GUARDED, SPLASHPROOF
 MOUNTING: FOOT
 METHOD OF DRIVE: COUPLED OR BELTED
 FRAMES SC2113ATZ THRU C2813ATZ

COOLING: FORCE VENTILATED WITH INTEGRAL BLOWER AND MOTOR AIR FILTERED-SPECIAL BAFFLE
 ACCESSORIES: PROVISION FOR TACHOMETER MOUNTING ONLY WHEN SPECIFIED

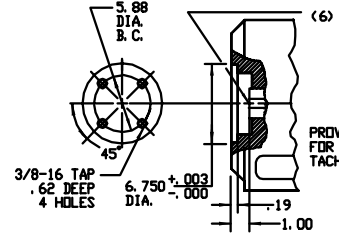


DIMENSIONS ARE IN INCHES

FRAME	XC	XE	XF	XD	XP
SC2113ATZ-LC2113ATZ	1.00	10.00	17.25	28.00	14.50
SC2512ATZ-LC2512ATZ	2.50	10.00	17.25	30.31	14.50
MC2812ATZ-LC2813ATZ	1.75	10.00	18.50	30.62	14.50

FRAME	A	B	BS	2F	N	N-V	U(2)	V	R(3)	SQ	LGTH	FN	FN-FV	FK(2)	FV	FR(3)	SQ	LGTH	VT	LBS.
SC2113ATZ-LC2113ATZ	10.25	5.25	4.25	4.44	1.38	1.75	10.44	10.31	2.56	3.50	5.19	6.81	2.38	3.00	3.00	3.00	1.416	375	2.25	345
SC2512ATZ-LC2512ATZ	12.31	6.25	5.00	5.56	1.62	2.00	12.50	12.44	3.06	4.25	6.06	8.00	3.00	3.00	3.00	3.00	1.416	375	2.25	370
MC2812ATZ-LC2813ATZ	13.78	7.00	5.50	6.62	1.88	2.75	14.00	13.94	3.38	4.75	6.75	9.19	3.50	3.00	3.00	3.00	1.416	375	2.25	400

FRAME	C	B	BS	2F	DRIVE END SHAFT AND KEY										OPPOSITE DRIVE END SHAFT AND KEY(S)					VT.	LBS.
					N	N-V	U(2)	V	R(3)	SQ	LGTH	FN	FN-FV	FK(2)	FV	FR(3)	SQ	LGTH			
SC2113ATZ	28.38	22.50	11.38	18.00	4.00	3.75	1.875	3.50	1.591	500	2.50	3.30	3.25	1.625	3.00	1.416	375	2.25	345		
MC2113ATZ	29.62	23.75	12.62	18.00	4.00	3.75	1.875	3.50	1.591	500	2.50	3.30	3.25	1.625	3.00	1.416	375	2.25	370		
LC2113ATZ	31.25	25.38	14.25	18.00	4.00	3.75	1.875	3.50	1.591	500	2.50	3.30	3.25	1.625	3.00	1.416	375	2.25	400		
SC2512ATZ	31.69	25.06	12.06	20.00	4.50	4.25	2.125	4.00	1.845	500	3.00	4.00	3.75	1.875	3.50	1.591	500	2.50	535		
MC2512ATZ	33.19	26.56	13.56	20.00	4.50	4.25	2.125	4.00	1.845	500	3.00	4.00	3.75	1.875	3.50	1.591	500	2.50	570		
LC2512ATZ	34.69	28.06	15.06	20.00	4.50	4.25	2.125	4.00	1.845	500	3.00	4.00	3.75	1.875	3.50	1.591	500	2.50	610		
MC2812ATZ	37.38	29.94	14.25	22.00	5.00	4.75	2.375	4.50	2.021	625	3.50	4.30	4.25	2.125	4.00	1.845	500	3.00	810		
LC2812ATZ	39.62	32.19	16.50	22.00	5.00	4.75	2.375	4.50	2.021	625	3.50	4.30	4.25	2.125	4.00	1.845	500	3.00	885		
LC2813ATZ	41.25	33.81	18.12	25.00	5.00	4.75	2.375	4.50	2.021	625	3.50	4.30	4.25	2.125	4.00	1.845	500	3.00	940		



- (1) "B" DIMENSION WILL NOT BE EXCEEDED. SHIMS UP TO .03 INCHES IN THICKNESS ARE USUALLY REQUIRED FOR COUPLED OR GEARED MACHINES.
- (2) "U" AND "FU" VARY +.000 - .015
- (3) "R" AND "FR" VARY +.000 - .015
- (4) TERMINAL BOX VARIES WITH H.P. FOR DIMENSIONS "AA", "AB", "AC", "AF", "X" AND "Y". REFER TO BOX D/S. (STD. 609959-1, "X/P" 609959-2, MILL 609959-3)
- (5) OPPOSITE DRIVE END SHAFT SUPPLIED ONLY WHEN SPECIFIED.
- (6) MOTOR SHAFT TAPPED FOR SCREW-IN STUB SHAFT.
- (7) WHEN THE MOTOR APPLICATION DOES NOT REQUIRE THE USE OF DPP, DRIVE END, ADD .25 TO "C" DIM. FOR BRACKET COVER, FOR HORIZONTAL APPLICATIONS ONLY.
- (8) TERMINAL BOX CAN BE ROTATED FOR LEAD OUTLET AT TOP, SIDES OR BOTTOM. TERMINAL BOX LOCATED ON OPPOSITE SIDE WHEN F-2, V-1, V-4, V-5, V-7, OR C-1 MOUNTING IS SPECIFIED. BOX LOCATED ON TOP WHEN SPECIFIED. BLOWER ASSEMBLY CAN BE LOCATED AT POSITIONS 1, 2, OR 4. MOTOR WEIGHT MAY VARY 15% FOR NON-STANDARD RATINGS AND/OR ACCESSORIES. IF MOUNTING CLEARANCE DETAILS ARE REQUIRED, CONSULT FACTORY. BLOWER MOTOR

CUSTOMER IS RESPONSIBLE FOR DETERMINING THAT BALDOR'S PRODUCT WILL PERFORM SUITABLY IN THE INTENDED APPLICATION.

REV. DESC: UPDATE FRAME SIZE		
REV. LTR: A	VERSION: 01	TDR: 00000845571
FILE: \RGG\00015\585	REVISED: 10:46:47 03/25/2014	BY: RGGWT
MTL: -		

BALDOR

DIMENSION DRAWING, SC2113ATZ - C2813ATZ, DPP, FOOT MTG.

SH 1 of 1