

INDUSTRIAL DIRECT CURRENT MOTORS AND GENERATORS - RPM III

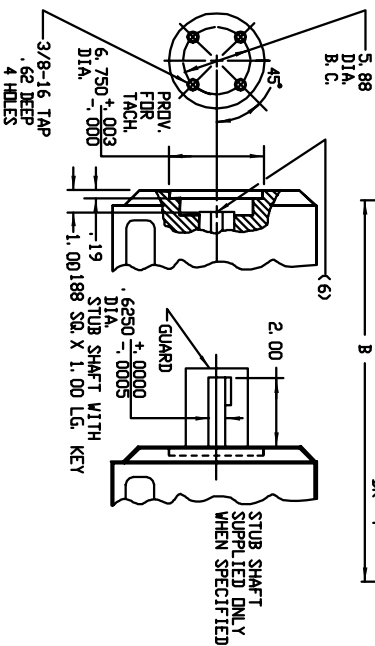
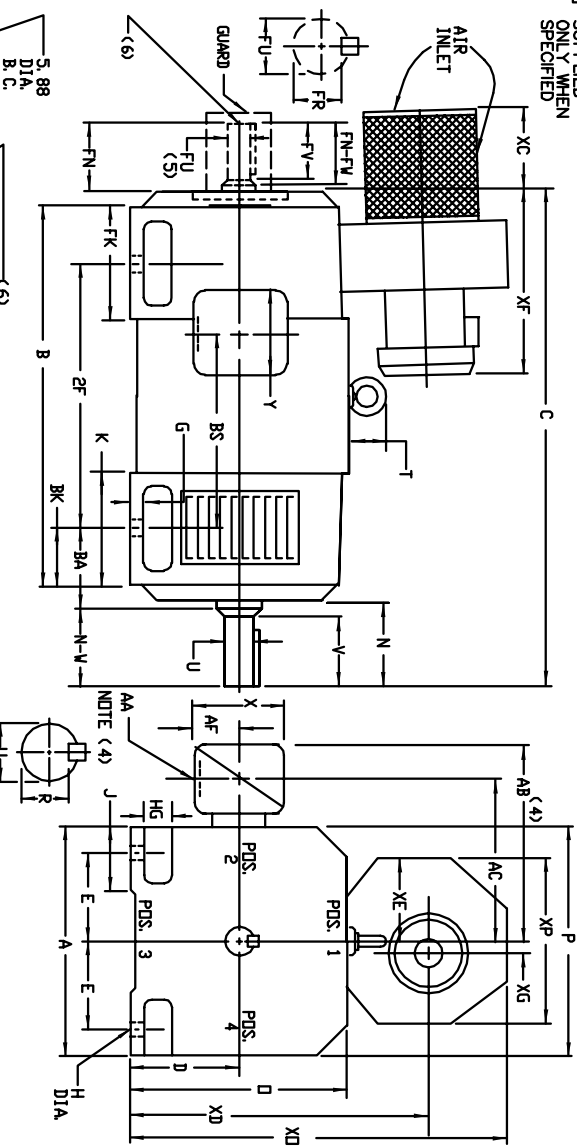
ENCLOSURE: DRIP-PROOF FULLY-GUARDED
SPLASHPROOF

MOUNTING: FOOT

COOLING: FORCE VENTILATED
WITH INTEGRAL
BLOWER AND MOTOR
AIR FILTERED

FRAMES MC3612ATZ THRU ULC3613ATZ

ACCESSORIES:
TACHOMETER MOUNTING
ONLY WHEN SPECIFIED



FRAME	XC		XD		XE		XF	
	STD	LG (8)	STD	LG (8)	STD	LG (8)	STD	LG (8)
MC3612ATZ-ULC3612ATZ	6.50	4.75	84.06	6.50	19.00	20.75	(9)	29.75
C3613ATZ-ULC3613ATZ	8.19	6.44	83.94	8.31	20.44	22.19	3.38	31.50
								13.12

FRAME	A		B(K1)		E		G		H		HG		J		D		P		T		BA		K		FK		
	STD	LG (8)	STD	LG (8)	STD	LG (8)	STD	LG (8)	STD	LG (8)	STD	LG (8)	STD	LG (8)	STD	LG (8)	STD	LG (8)	STD	LG (8)	STD	LG (8)	STD	LG (8)	STD	LG (8)	
MC3612ATZ-ULC3612ATZ	17.50	9.00	9.00	7.00	88	81	2.62	3.50	17.81	17.62	3.54	5.88	7.25	8.56													

FRAME	METHOD	C/D	B		RS	ZF	N		V		R(K3)		SO		LTH		FN		FR-FV		FV		FR3		SR		LTH	WT
			STD	LG (8)			STD	LG (8)	STD	LG (8)	STD	LG (8)	STD	LG (8)	STD	LG (8)	STD	LG (8)	STD	LG (8)	STD	LG (8)	STD	LG (8)	STD	LG (8)		
MC3612ATZ-ULC3612ATZ	CUPLED	MC 88	64.62	34.44	36.19	18.12	238.00	6.00	5.75	2	875	5.50	2	490	7.50	4.23	6.00	5.75	2	875	5.50	2	490	7.50	4.23	1685	1685	
ULC3612ATZ-ULC3612ATZ	BELTED	MC 62	48.38	38.19	39.94	21.88	238.00	6.00	5.75	2	875	5.50	2	490	7.50	4.23	6.00	5.75	2	875	5.50	2	490	7.50	4.23	1860	1860	
ULC3612ATZ-ULC3612ATZ	BELTED	MC 46	62.48	38.19	39.94	21.88	238.00	6.00	5.75	2	875	5.50	2	490	7.50	4.23	6.00	5.75	2	875	5.50	2	490	7.50	4.23	1860	1860	
ULC3612ATZ-ULC3612ATZ	BELTED	MC 47	38.49	38.19	39.94	21.88	238.00	6.00	5.75	2	875	5.50	2	490	7.50	4.23	6.00	5.75	2	875	5.50	2	490	7.50	4.23	2010	2010	
ULC3612ATZ-ULC3612ATZ	BELTED	MC 50	12.51	88	41.69	43.44	25.38	32.00	6.00	5.75	2	875	5.50	2	490	7.50	4.23	6.00	5.75	2	875	5.50	2	490	7.50	4.23	2020	2020

- (1) 'D' DIMENSION WILL NOT BE EXCEEDED. SHIMS UP TO .06 INCHES IN THICKNESS ARE USUALLY REQUIRED FOR CUPLED OR GEARED MACHINES.
 - (2) 'E' AND 'F' VARY FROM .000 TO .015
 - (3) 'G' AND 'H' VARY FROM .000 TO .015
 - (4) TERMINAL BOX VARIATIONS WITH 'A' DIMENSIONS 'AA', 'AP', 'V-4', 'V-5', 'V-7' REFER TO BOX D/S. (STD. 609979-1, 609979-2, 609979-3)
 - (5) OPPOSITE DRIVE END SHAFT SUPPLIED ONLY WHEN SPECIFIED.
 - (6) MOTOR SHAFT TAPPED FOR SCREW IN STUB SHAFT.
 - (7) WHEN THE MOTOR APPLICATION DOES NOT REQUIRE THE USE OF DPP, DRIVE END, ADD '25' TO 'C' DIM. FOR BRACKET COVER.
 - (8) DIMENSION FOR FRAMES WITH PREFIX LMC, LLC, LC3613ATZ, ULMC, ULC OR ULC3613ATZ.
 - (9) 'XG' DIMENSION IS NOT APPLICABLE TO 'C3612ATZ' FRAMES (BLOWER MOTOR IS CENTERED ON SHAFT C/D)
- TERMINAL BOX CAN BE ROTATED FOR LEAD OUTLET AT TOP, SIDES OR BOTTOM
- TERMINAL BOX LOCATED ON OPPOSITE SIDE WHEN 'F-2, 'V-1, 'V-4, 'V-5, 'V-7' OR 'C-1' MOUNTING IS SPECIFIED.
- BOX LOCATED ON TOP WHEN SPECIFIED.
- BLOWER ASSEMBLY CAN BE LOCATED AT POSITIONS 1, 2, OR 4, EXCEPT BLOWER ASSEMBLY AND TERMINAL BOX CAN NOT BE LOCATED AT THE SAME POSITION.
- MOTOR WEIGHT MAY VARY 15% FOR NON-STANDARD RATINGS AND/OR ACCESSORIES.
- IF MOUNTING CLEARANCE DETAILS ARE REQUIRED, CONSULT FACTORY.

CUSTOMER IS RESPONSIBLE FOR DETERMINING THAT BALDOR'S PRODUCT WILL PERFORM SUITABLY IN THE INTENDED APPLICATION.

REV. DESC: ENLARGE SO PRINT IS MORE LEGIBLE

REV. LTR: A

VERSION: 01

TDR: 00000762335

FILE: \RGG\00016\063

REVISED: 01: 30: 17 08/27/2012

MTL: -

BY: RGGWT



DIMENSION DRAWING, MC3612ATZ - ULC3613ATZ, DPP, FOOT MTG

SH 1 of 1