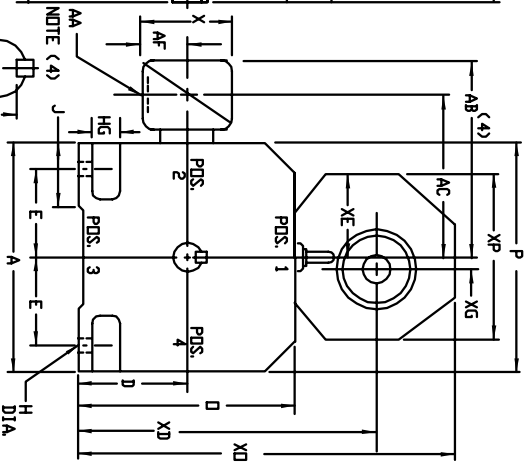
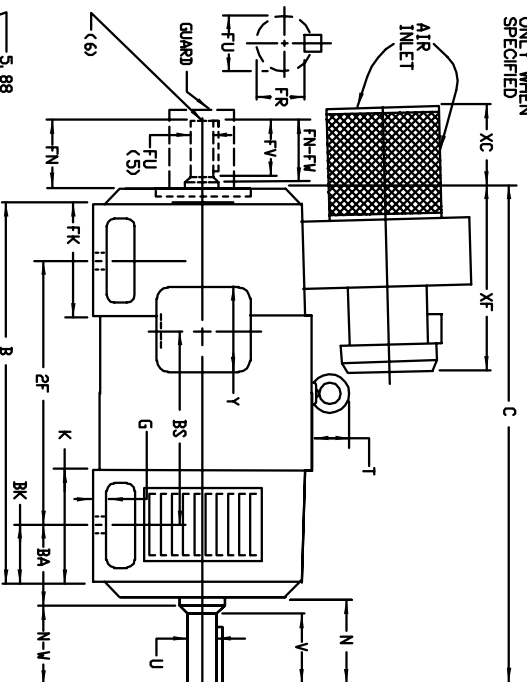


INDUSTRIAL DIRECT CURRENT MOTORS AND GENERATORS - RPM III

ENCLOSURE: DRIP-PROOF FULLY-GUARDED
SPLASHPROOF

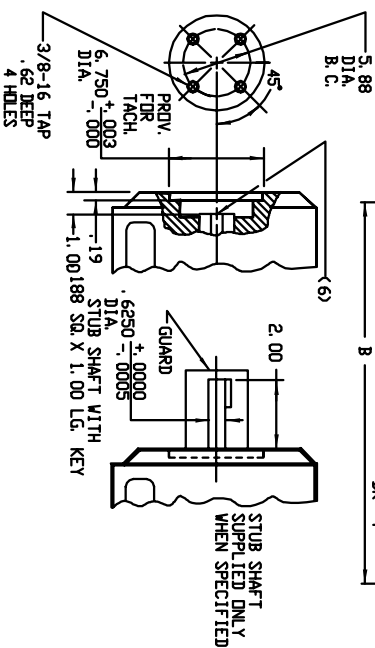
COOLING: FORCE VENTILATED
WITH INTEGRAL
BLOWER AND MOTOR
AIR FILTERED

ACCESSORIES: PROVISION FOR
TACHOMETER MOUNTING
ONLY WHEN SPECIFIED



DIMENSIONS ARE IN INCHES

FRAME	XC		XD		XE		XF	
	STD	LG (Ø)	STD	LG (Ø)	STD	LG (Ø)	STD	LG (Ø)
MC3612ATZ-ULC3612ATZ	6.50	4.75	84.06	19.00	20.75	(9)	29.75	13.00
C3613ATZ-ULC3613ATZ	8.19	6.44	83.94	20.44	22.19	3.38	31.50	13.12



FRAME	A	B(K1)	E	G	H	HG	J	D	P	T	BA	K	STD	LG (Ø)	FK
MC3612ATZ-ULC3612ATZ	17.50	9.00	7.00	88	.81	2.62	3.50	17.81	17.62	3.54	5.88	7.25	8.56	10.31	4.62

FRAME	METHOD	C/D	B		RS	ZF	N		V		R(K3)		SO		LTH		FN	FR-FV	FIX(2)	FV	FR(3)	SR	LTH	WT		
			STD	LG (Ø)			STD	LG (Ø)	N	N-W	UC(2)	V	UC(2)	R(K3)	SO	LTH									FN	FR-FV
MC3612ATZ-ULC3612ATZ	COUPLED	42.88	44.62	34.44	36.19	18.12	238.00	6.00	5.75	2	875	5.50	2	450	750	4.25	6.00	5.75	2	875	5.50	2	450	750	4.25	1685
LC3612ATZ-ULC3612ATZ	BELTED	43.62	45.38	34.44	36.19	18.12	238.00	6.75	6.50	3	250	6.25	2	831	750	5.00	6.00	5.75	2	875	5.50	2	450	750	4.25	1695
LC3612ATZ-ULC3612ATZ	COUPLED	46.62	48.38	38.19	39.94	21.88	238.00	6.00	5.75	2	875	5.50	2	450	750	4.25	6.00	5.75	2	875	5.50	2	450	750	4.25	1680
LC3612ATZ-ULC3612ATZ	BELTED	47.38	49.12	38.19	39.94	21.88	238.00	6.75	6.50	3	250	6.25	2	831	750	5.00	6.00	5.75	2	875	5.50	2	450	750	4.25	1680
LC3613ATZ-ULC3613ATZ	COUPLED	50.12	51.88	41.69	43.44	25.38	238.00	6.00	5.75	2	875	5.50	2	450	750	4.25	6.00	5.75	2	875	5.50	2	450	750	4.25	2010
LC3613ATZ-ULC3613ATZ	BELTED	50.88	52.62	41.69	43.44	25.38	238.00	6.75	6.50	3	250	6.25	2	831	750	5.00	6.00	5.75	2	875	5.50	2	450	750	4.25	2020

- (1) 'D' DIMENSION WILL NOT BE EXCEEDED. SHIMS UP TO .06 INCHES IN THICKNESS ARE USUALLY REQUIRED FOR COUPLED OR GEARED MACHINES.
- (2) 'E' AND 'F' VARY FROM .000 TO .015
- (3) 'G' AND 'H' VARY FROM .000 TO .015
- (4) TERMINAL BOX VARIATIONS WITH DIMENSIONS 'AA', 'AB', 'AC', 'AD', 'AE', 'AF', 'AG', 'AH', 'AI', 'AJ', 'AK', 'AL', 'AM', 'AN', 'AO', 'AP', 'AQ', 'AR', 'AS', 'AT', 'AU', 'AV', 'AW', 'AX', 'AY', 'AZ' REFER TO BOX D/S. (STD. 609979-1, 609979-2, 609979-3)
- (5) DEPOSITE DRIVE END SHAFT SUPPLIED ONLY WHEN SPECIFIED.
- (6) MOTOR SHAFT TAPPED FOR SCREW IN STUB SHAFT.
- (7) WHEN THE MOTOR APPLICATION DOES NOT REQUIRE THE USE OF DPP, DRIVE END, ADD '25' TO 'C' DIM. FOR BRACKET COVER.
- (8) DIMENSION FOR FRAMES WITH PREFIX LMC, LLC, LC3613ATZ, ULMC, ULLC OR ULC3613ATZ.
- (9) 'XG' DIMENSION IS NOT APPLICABLE TO 'C3612ATZ' FRAMES (BLOWER MOTOR IS CENTERED ON SHAFT 'C/D')

- TERMINAL BOX CAN BE ROTATED FOR LEAD OUTLET AT TOP, SIDES OR BOTTOM
- TERMINAL BOX LOCATED ON OPPOSITE SIDE WHEN F-2, V-1, V-4, V-5, V-7 OR C-1 MOUNTING IS SPECIFIED.
- BOX LOCATED ON TOP WHEN SPECIFIED.
- BLOWER ASSEMBLY CAN BE LOCATED AT POSITIONS 1, 2, OR 4, EXCEPT BLOWER ASSEMBLY AND TERMINAL BOX CAN NOT BE LOCATED AT THE SAME POSITION.
- MOTOR WEIGHT MAY VARY 15% FOR NON-STANDARD RATINGS AND/OR ACCESSORIES.
- IF MOUNTING CLEARANCE DETAILS ARE REQUIRED, CONSULT FACTORY.

CUSTOMER IS RESPONSIBLE FOR DETERMINING THAT BALDOR'S PRODUCT WILL PERFORM SUITABLY IN THE INTENDED APPLICATION.

REV. DESC: ENLARGE SO PRINT IS MORE LEGIBLE

REV. LTR: A

VERSION: 01

TDR: 00000762335

FILE: \RGG\00016\063

REVISED: 01: 30: 17 08/27/2012

MTL: -

BY: RGGWT



DIMENSION DRAWING, MC3612ATZ - ULC3613ATZ, DPP, FOOT MTG